



62.5 MHz IF Saw Filter

Part Number: AM62S792

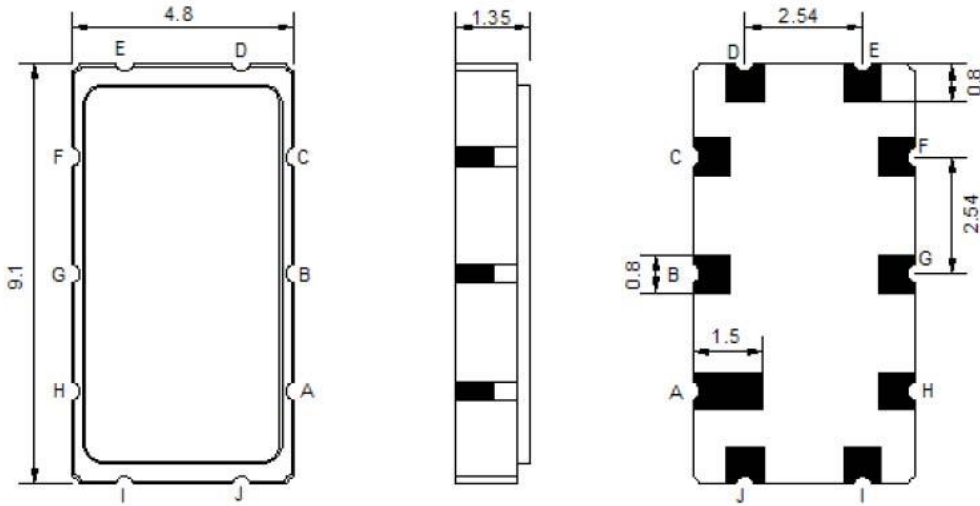


Parameters Description	Unit	Minimum	Typical	Maximum
Center Frequency (Fo)	MHz	-	62.50	-
Insertion Loss at Fo	dB	-	19.0	20.5
Passband Ripple within Fo ± 9.22 MHz	dB	-	0.70	1.0
Group Delay Variation within Fo ± 9.22 MHz	nsec	-	30	80
Absolute Delay at Fo	µsec	-	0.98	-
Bandwidth at -1.0 dB	MHz	18.70	19.20	-
Bandwidth at -5.0 dB	MHz	-	20.60	-
Bandwidth at -7.0 dB	MHz	-	20.95	-
Bandwidth at -40.0 dB	MHz	-	25.60	26.50
Relative Attenuation:				
Lower Sidelobe	dB	40	45	-
Upper Sidelobe	dB	40	45	-

Parameters Description	Unit	Minimum	Typical	Maximum
Operation Temperature Range	°C	-30	-	+60
Storage Temperature Range	°C	-40	-	+85
Maximum DC Voltage	V	-	-	10
Maximum Input Power	dBm	-	-	10
Source Impedance (Single Ended) ₁	Ω	-	50	-
Load Impedance (Single Ended) ₁	Ω	-	50	-
Package Size and Type	9.1 x 4.8 x 1.35 mm		T	

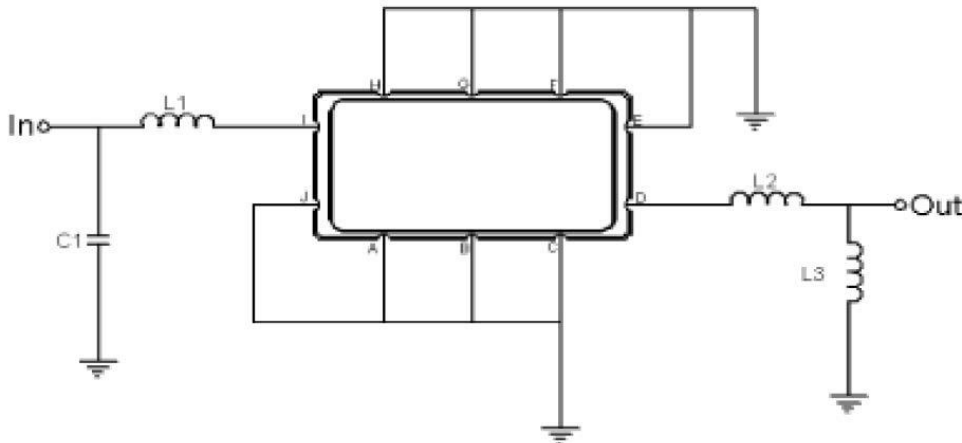


Outline Drawing:



Pin Description	
ABCEFGHJ	Ground
I	Input
D	Output

Testing Environment:

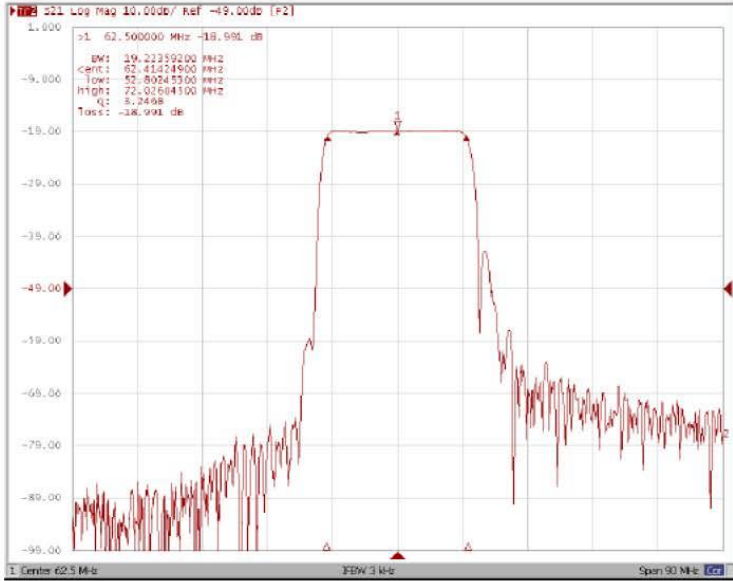


Test Fixture & Values		
Input	L1 = 150 nH,	C1 = 56 pF
Output	L2 = 33 nH,	C2 = 68 pF
Source/Load Impedance	50 Ω	

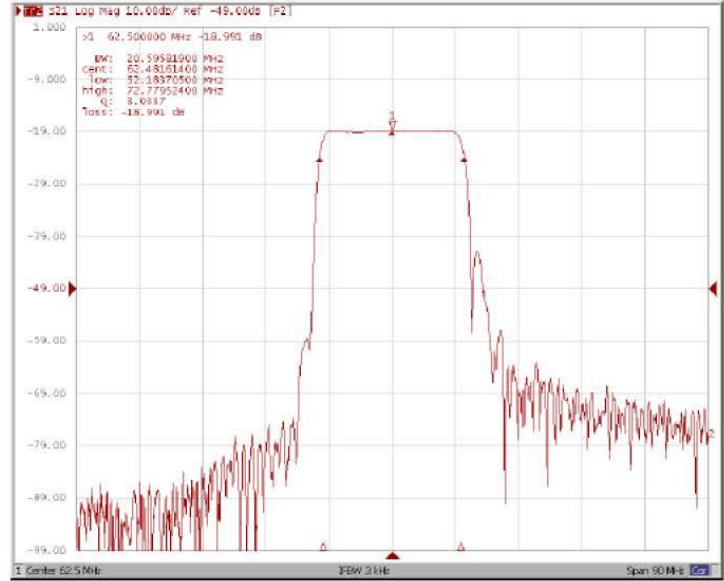


Frequency Response:

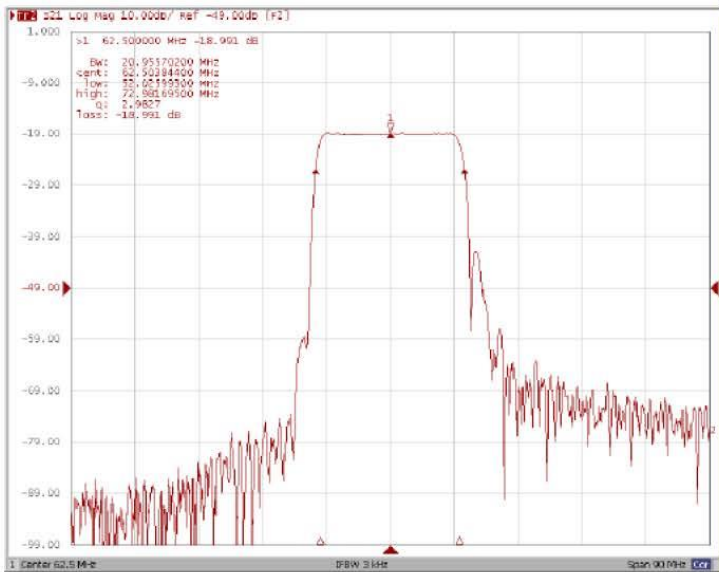
Bandwidth at -1.0 dB



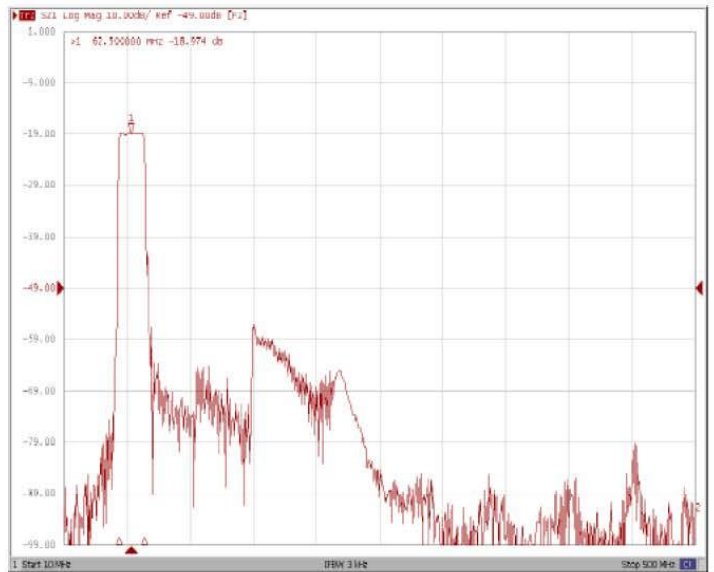
Bandwidth at -5.0 dB



Bandwidth at -7.0 dB



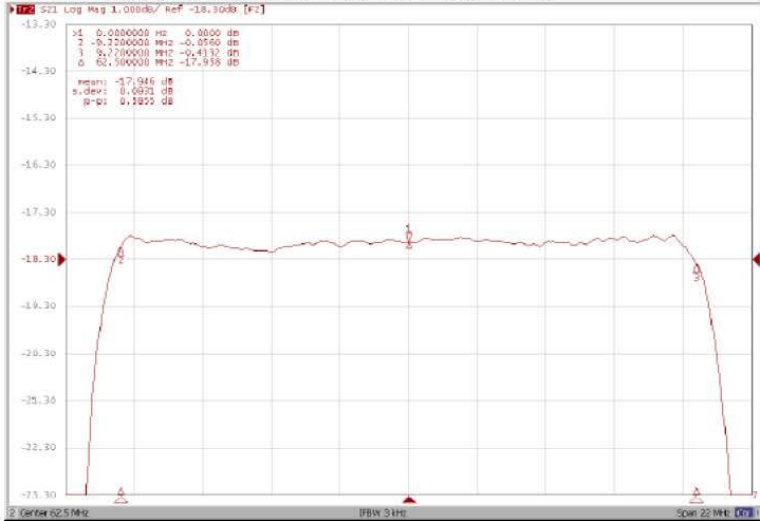
Wide-Band



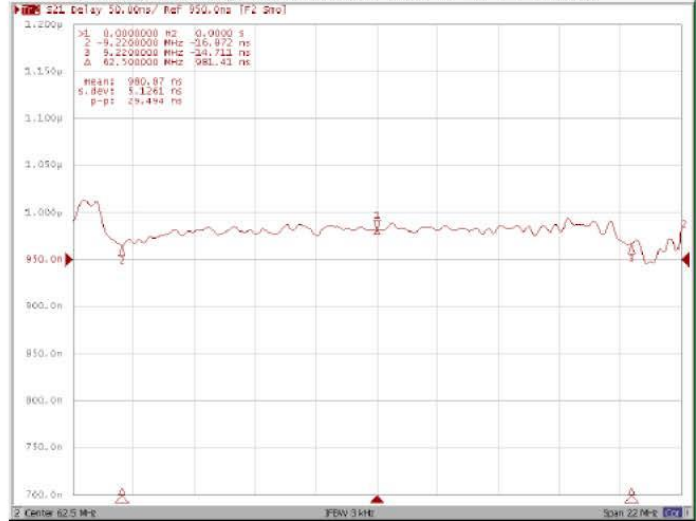


Frequency Response:

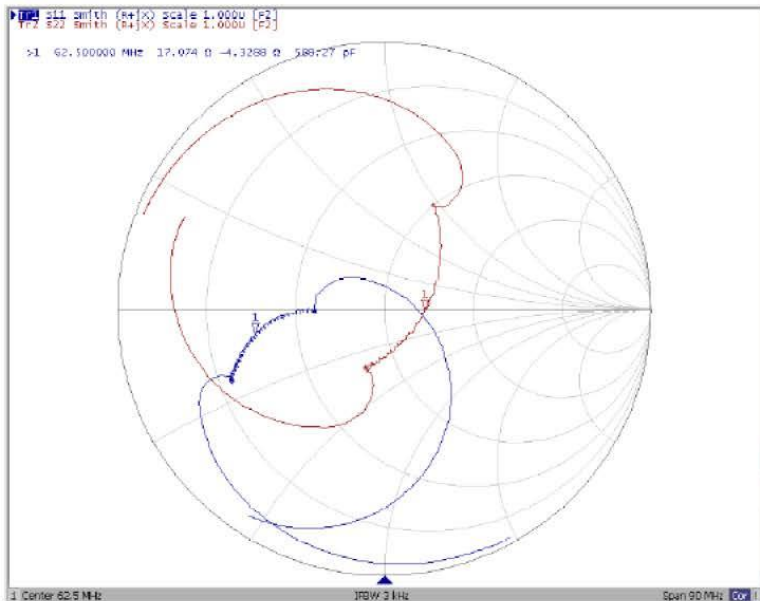
Ripple Variation at Fo ±9.22MHz



Group Delay Variation at Fo ±9.22MHz



Smith Chart



SWR

