



62.5 MHz IF Saw Filter
Part Number: AM62S794

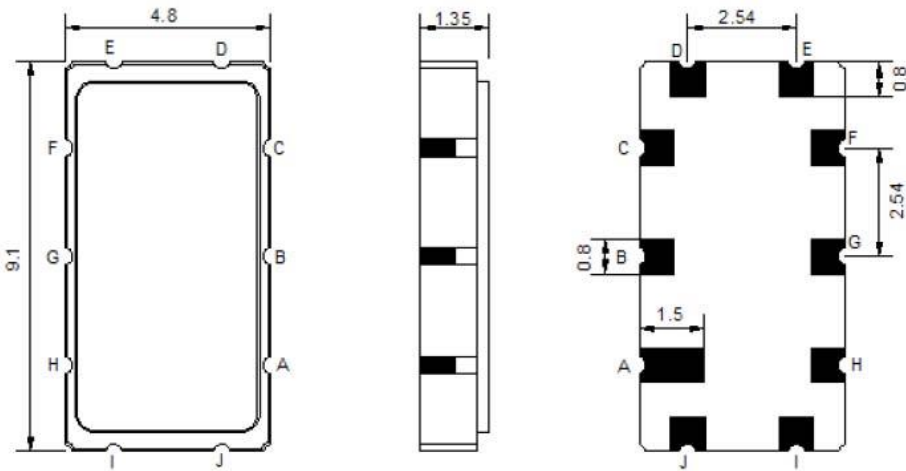


Parameters Description	Unit	Minimum	Typical	Maximum
Center Frequency (Fo)	MHz	-	62.5	-
Insertion Loss at Fo	dB	-	15.8	18.0
Temperature Coefficient	ppm/°C	-	-86	-
Passband Ripple within Fo ± 9.22 MHz	dB	-	0.30	0.7
Group Delay Variation within Fo ± 9.22 MHz	nsec	-	17	35
Absolute Delay at Fo	µsec	-	0.66	-
Bandwidth at -1.0 dB	MHz	20.80	21.30	-
Bandwidth at -3.0 dB	MHz	21.80	22.82	-
Bandwidth at -20.0 dB	MHz	-	26.80	-
Bandwidth at -30.0 dB	MHz	-	28.10	28.60
Bandwidth at -40.0 dB	MHz	-	29.25	30.0
Ultimate Rejection	dB	-	40	-

Parameters Description	Unit	Minimum	Typical	Maximum
Operation Temperature Range	°C	-20	-	+70
Storage Temperature Range	°C	-40	-	+85
Maximum DC Voltage	V	-	-	10
Maximum Input Power	dBm	-	-	10
Source Impedance (Single Ended) ₁	Ω	-	50	-
Load Impedance (Single Ended) ₁	Ω	-	50	-
Package Size and Type	9.1 x 4.8 x 1.5 mm		T	

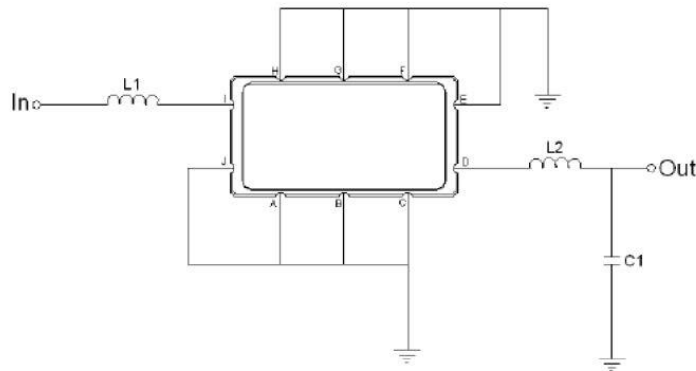


Outline Drawing:



Pin Description									
A	B	C	E	F	G	H	J	Ground	
								I	Input
								D	Output

Testing Environment:

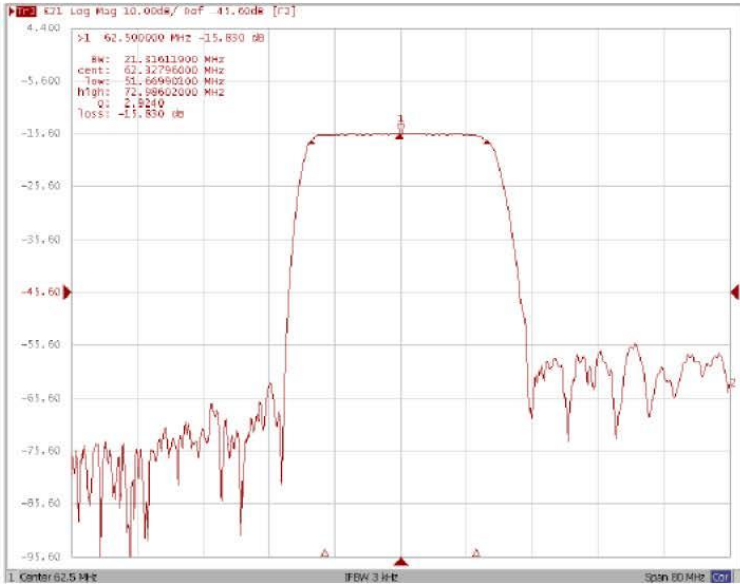


Test Fixture & Values	
Input	L1 = 180 nH
Output	L2 = 270 nH, C1 = 4 pF
Source/Load Impedance	50 Ω

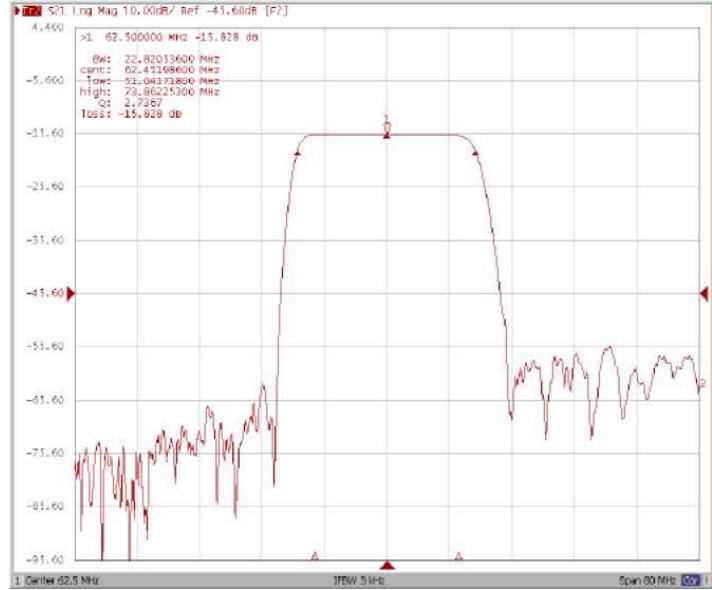


Frequency Response:

Bandwidth at -1.0 dB



Bandwidth at -3.0 dB



Bandwidth at -20.0 dB



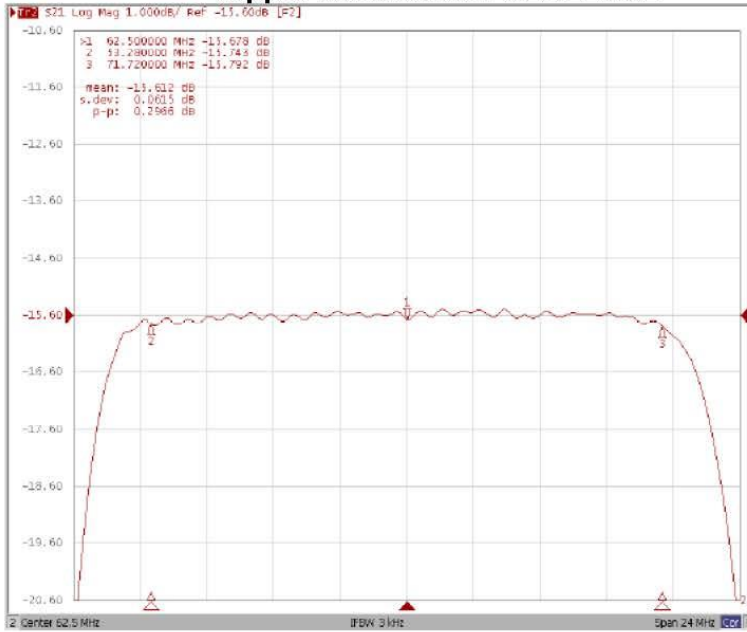
Bandwidth at -40.0 dB



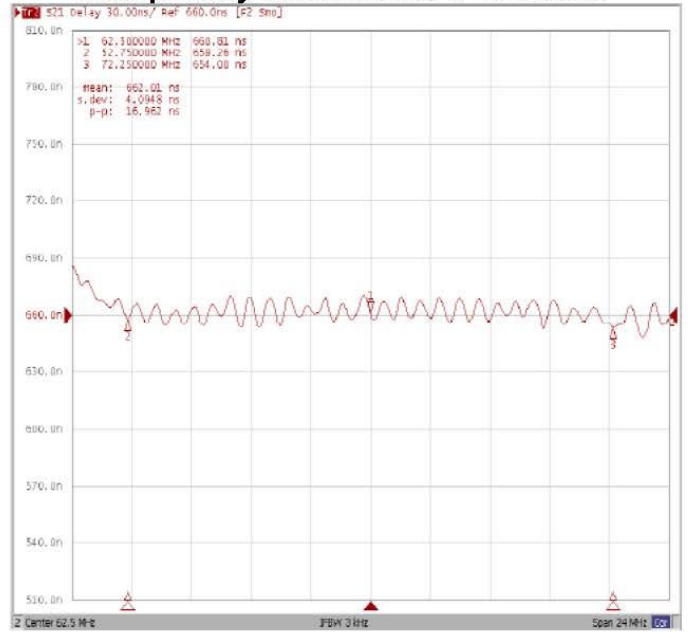


Frequency Response:

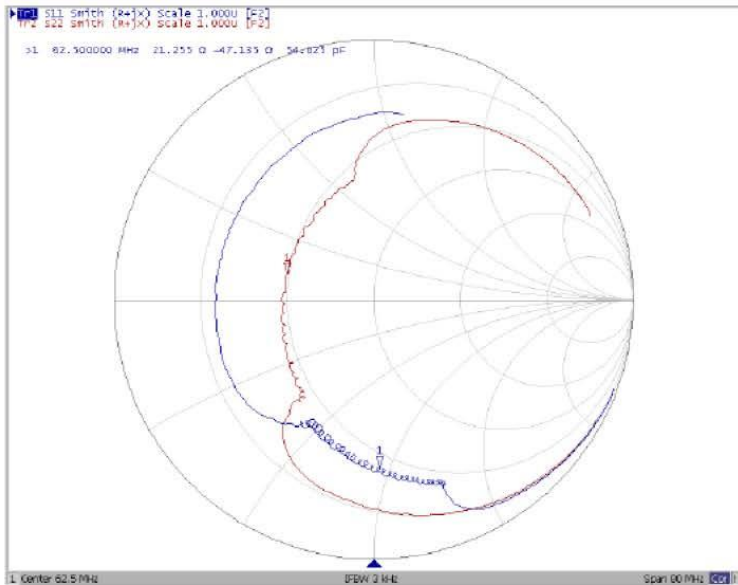
Ripple Variation at Fo ±9.22MHz



Group Delay Variation at Fo ±9.75MHz



Smith Chart



VSWR

