



ANATECH ELECTRONICS INC
RF & Microwave Filters & Products

62.5 MHz IF Saw Filter

Part Number: AM62S802



Parameters Description	Unit	Minimum	Typical	Maximum
Center Frequency (Fo)	MHz	-	62.5	-
Insertion Loss at Fo	dB	-	15.5	17.0
Temperature Coefficient	ppm/°C	-	-94	-
Amplitude Ripple Variation	dBp-p	-	0.4	1.0
Group Delay Variation	nsec	-	20	100
Absolute Delay at Fo	µsec	-	0.92	-
Bandwidth at -1.0 dB	MHz	9.5	9.85	-
Bandwidth at -3.0 dB	MHz	10.2	10.6	-
Bandwidth at -40.0 dB	MHz	-	13.9	15.0
Relative Attenuation:				
Lower Sidelobe	dB	40	48	-
Upper Sidelobe	dB	40	45	-
In/Out Return loss at Fo	dB	-	-	-

Parameters Description	Unit	Minimum	Typical	Maximum
Operation Temperature Range	°C	-30	-	+80
Storage Temperature Range	°C	-40	-	+85
Maximum DC Voltage	V	-	-	10
Maximum Input Power	dBm	-	-	10
Source Impedance (Single Ended) ₁	Ω	-	50	-
Load Impedance (Single Ended) ₁	Ω	-	50	-
Package Size and Type		13.3 x 6.5 x 1.8 mm		V

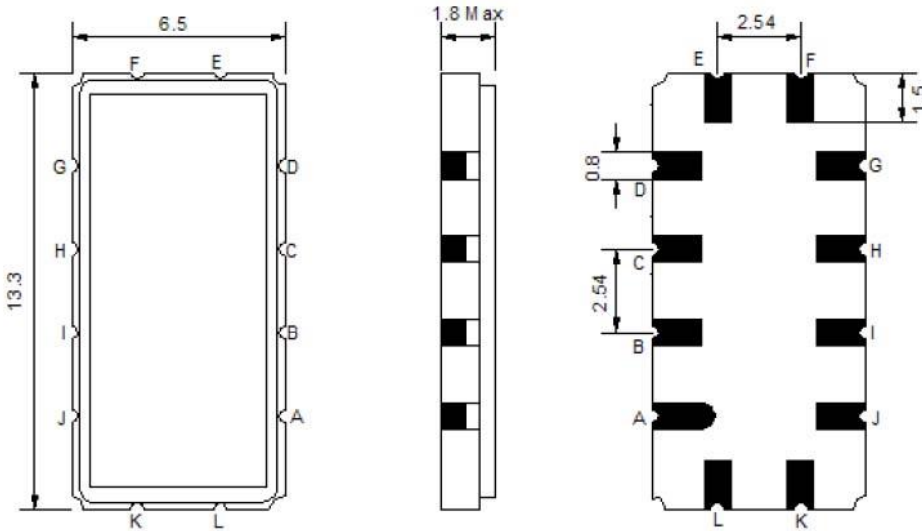


62.5 MHz IF Saw Filter

Part Number: AM62S802

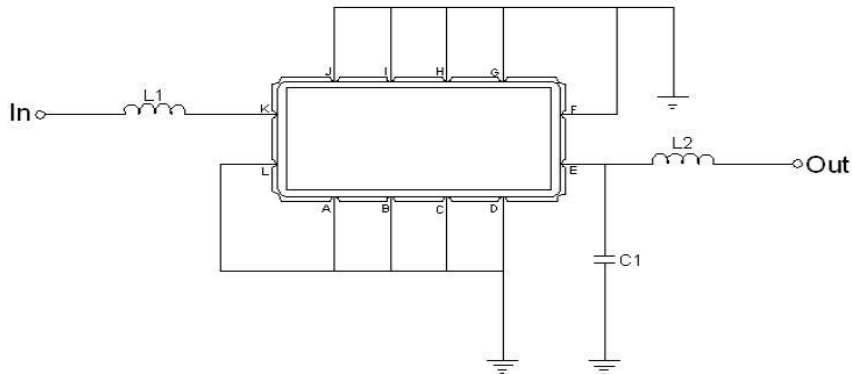


Outline Drawing:



Pin Description	
A B C E F G H J	Ground
I	Input
D	Output

Testing Environment:



Test Fixture & Values	
Input	L1=180nH
Output	L2=150nH, C1=20pF
Source/Load Impedance	50 Ω



62.5 MHz IF Saw Filter

Part Number: AM62S802



Frequency Response:

