



ANATECH ELECTRONICS INC
RF & Microwave Filters & Products

62.5 MHz IF Saw Filter

Part Number: AM62S803

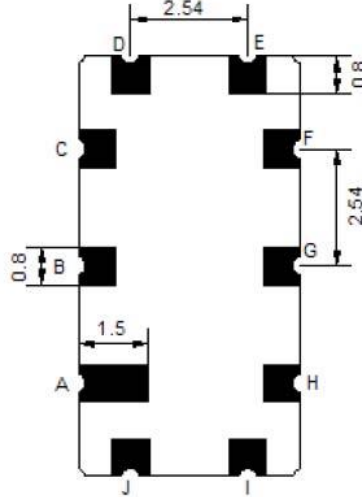
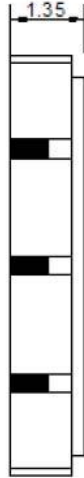
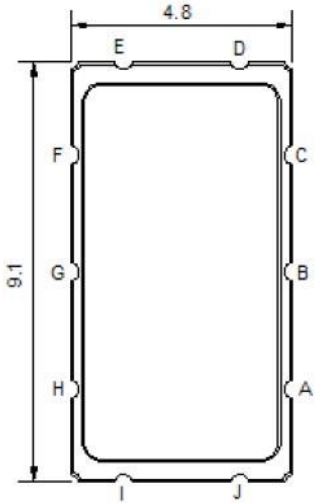


Parameters Description	Unit	Minimum	Typical	Maximum
Center Frequency (Fo)	MHz	-	62.50	-
Insertion Loss at Fo	dB	-	18.0	20.5
Passband Ripple Variation at Fo ± 9.75 MHz	dB	-	0.30	1.0
Group Delay Variation at Fo ± 9.75 MHz	nsec	-	20	40
Absolute Delay at Fo	µsec	-	0.91	-
Bandwidth at -1.0 dB	MHz	20.7	21.2	-
Bandwidth at -3.0 dB	MHz	21.8	22.2	-
Bandwidth at -20.0 dB	MHz	-	24.9	-
Bandwidth at -30.0 dB	MHz	-	25.6	26.5
Bandwidth at -40.0 dB	MHz	-	26.9	27.5
Relative Attenuation:				
Lower Sidelobe	dB	40	48	-
Upper Sidelobe	dB	40	45	-

Parameters Description	Unit	Minimum	Typical	Maximum
Operation Temperature Range	°C	-30	-	+80
Storage Temperature Range	°C	-40	-	+85
Maximum DC Voltage	V	-	-	10
Maximum Input Power	dBm	-	-	10
Source Impedance (Single Ended) ₁	Ω	-	50	-
Load Impedance (Single Ended) ₁	Ω	-	50	-
Package Size and Type	9.1 x 4.8 x 1.5 mm		T	

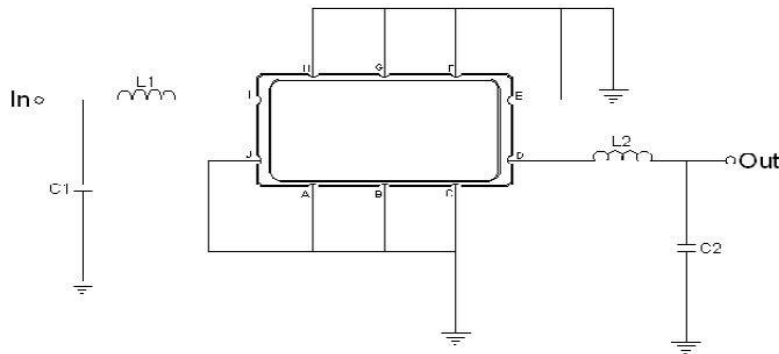


Outline Drawing:



Pin Description	
A B C E F G H J	Ground
I	Input
D	Output

Testing Environment:



Test Fixture & Values	
Input	L1 = 180 nH , C1 = 22 pF
Output	L2 = 180 nH, C2 = 20 pF
Source/Load Impedance	50 Ω



62.5 MHz IF Saw Filter

Part Number: AM62S803



Frequency Response:

