



62.5 MHz IF Saw Filter
Part Number: AM62S804

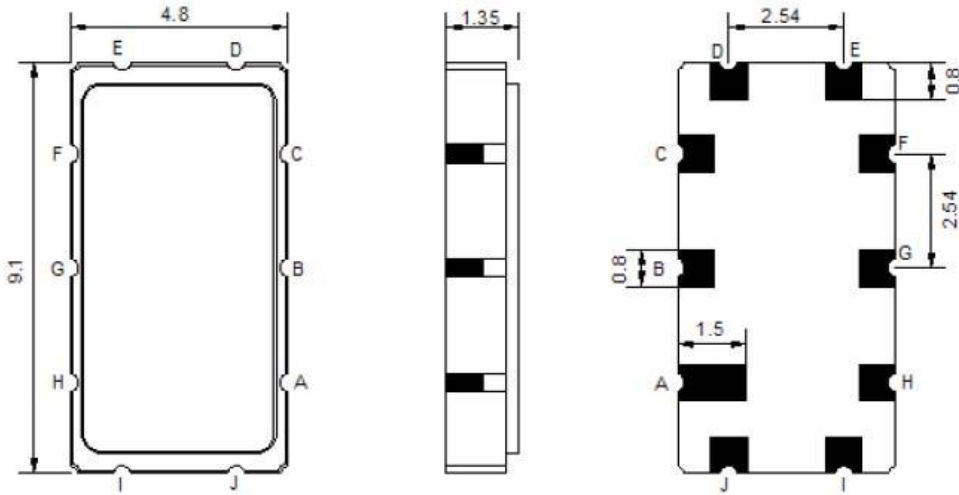


Parameters Description		Unit	Minimum	Typical	Maximum
Center Frequency (Fo)		MHz	-	62.5	-
Insertion Loss at Fo		dB	-	18.0	20.5
Passband Ripple Variation at Fo ± 9.75 MHz		dB	-	0.30	1.0
Group Delay Variation at Fo ± 9.75 MHz		nsec	-	20	40
Absolute Delay at Fo		µsec	-	0.91	-
Bandwidth at -1.0 dB		MHz	20.7	21.2	-
Bandwidth at -3.0 dB		MHz	21.8	22.2	-
Bandwidth at -20.0 dB		MHz	-	24.9	-
Bandwidth at -30.0 dB		MHz	-	25.6	26.5
Bandwidth at -40.0 dB		MHz	-	26.9	28.0
Relative Attenuation:					
62.5 MHz	-12.5 MHz	dB	35	40	-
Lower Sidelobe		dB	40	45	-
Upper Sidelobe		dB	40	45	-

Parameters Description	Unit	Minimum	Typical	Maximum
Operation Temperature Range	°C	-30	-	+80
Storage Temperature Range	°C	-40	-	+85
Maximum DC Voltage	V	-	-	10
Maximum Input Power	dBm	-	-	10
Source Impedance (Single Ended) ₁	Ω	-	50	-
Load Impedance (Single Ended) ₁	Ω	-	50	-
Package Size and Type	9.1 x 4.8 x 1.5 mm T			

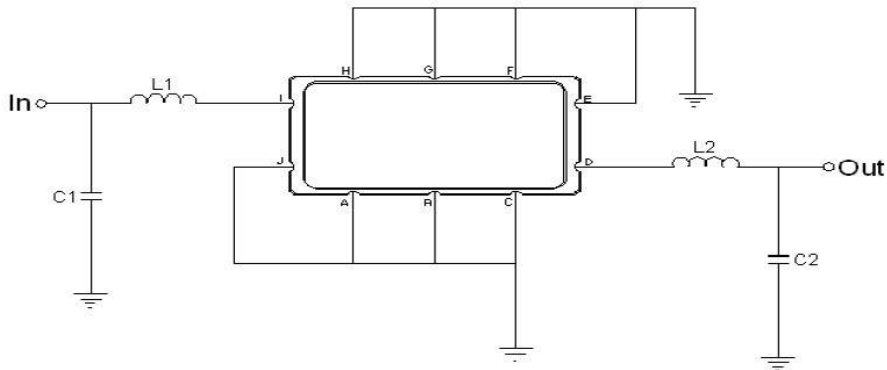


Outline Drawing:



Pin Description	
A B C E F G H J	Ground
I	Input
D	Output

Testing Environment:

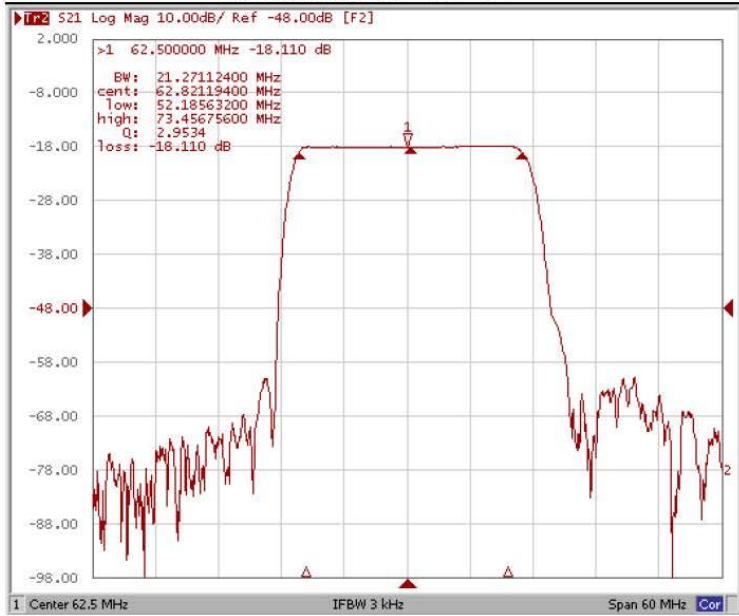


Test Fixture & Values		
Input	L1 = 180 nH,	C1 = 22 pF
Output	L2 = 180 nH,	C2 = 22 pF
Source/Load Impedance	50 Ω	

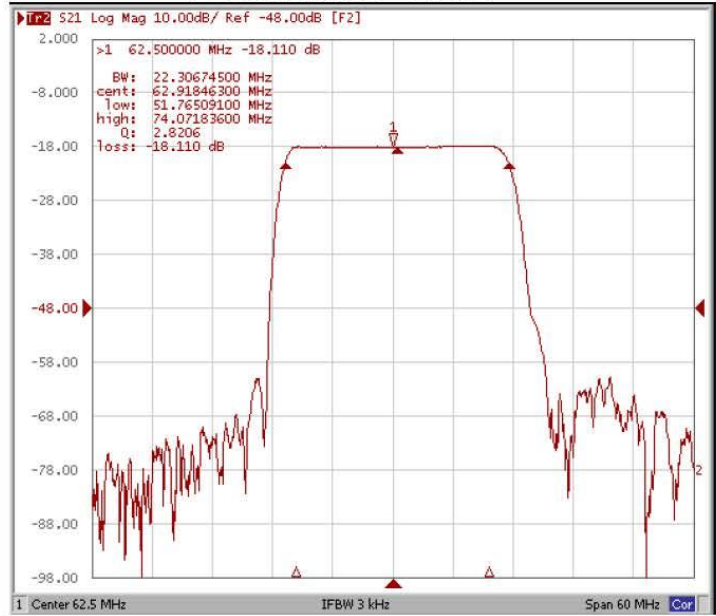


Frequency Response:

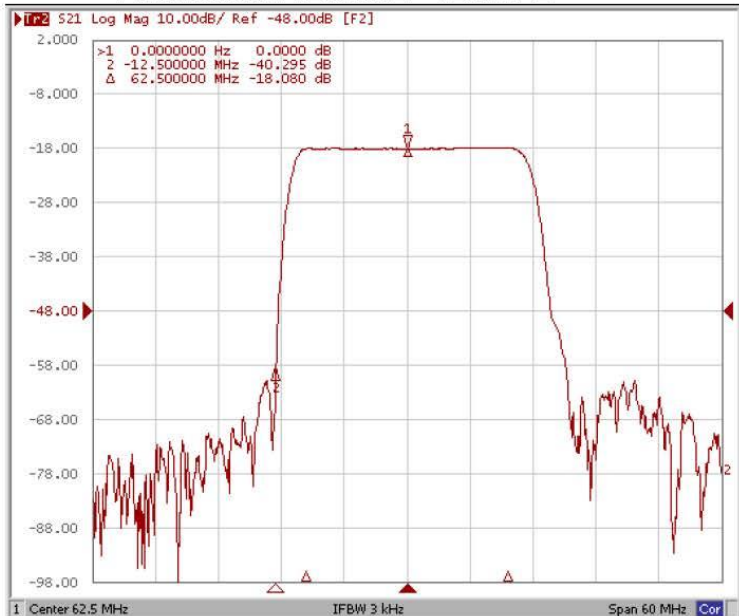
Bandwidth at -1.0 dB



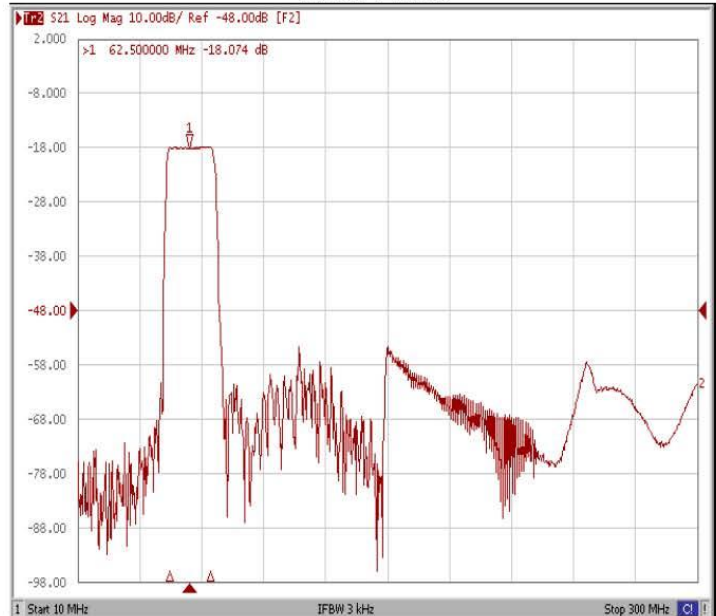
Bandwidth at -3.0 dB



Attenuation 62.5MHz -12.5MHz



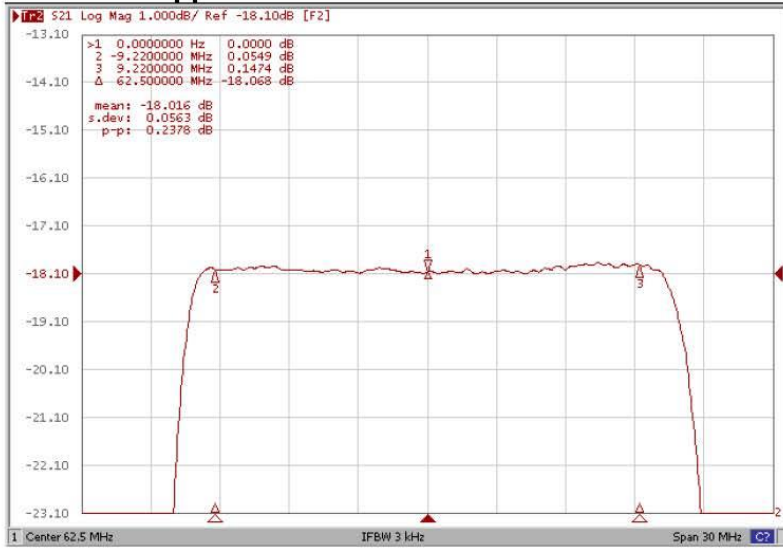
Wide-Band



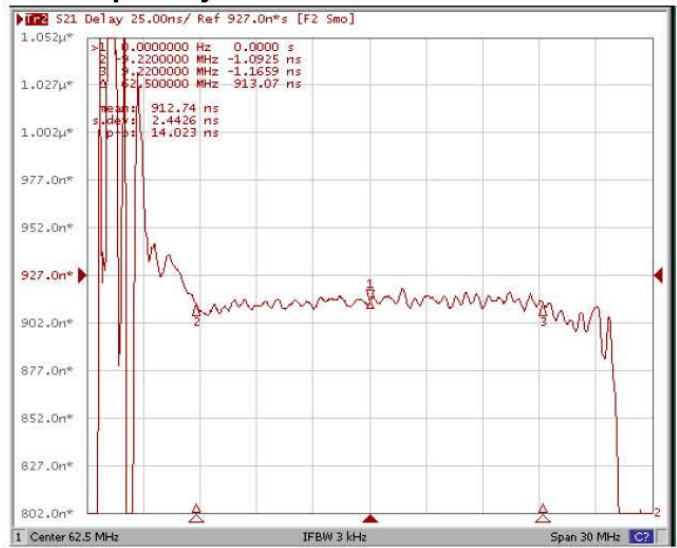


Frequency Response:

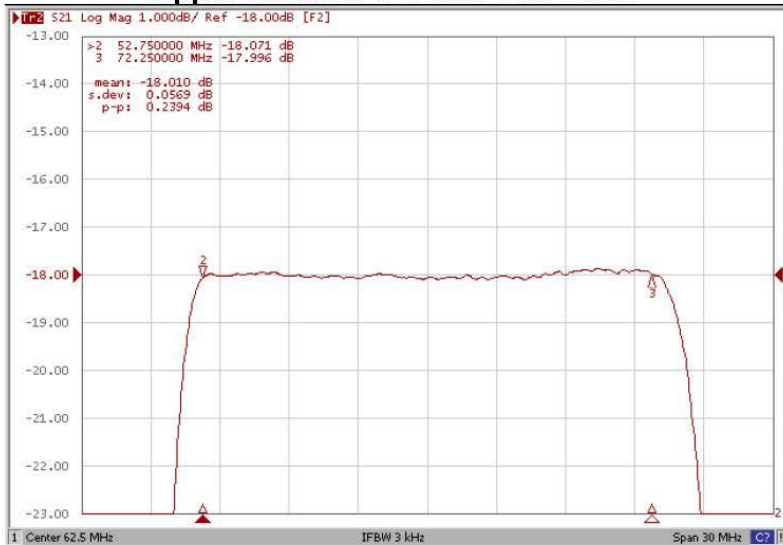
Ripple Variation 62.5MHz \pm 9.22MHz



Group Delay Variation 62.5MHz \pm 9.22MHz



Ripple Variation 62.5MHz \pm 9.75MHz



Group Delay Variation 62.5MHz \pm 9.75MHz

