



62.5 MHz IF Saw Filter

Part Number: AM62S805

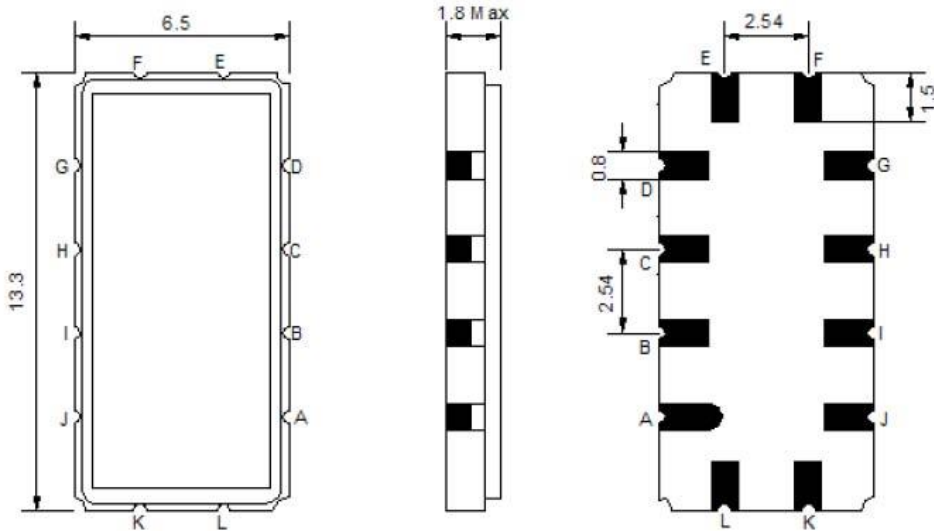


Parameters Description	Unit	Minimum	Typical	Maximum
Center Frequency (Fo)	MHz	-	62.5	-
Insertion Loss at Fo	dB	-	22.0	23.5
Amplitude Ripple Variation	dBp-p	-	0.5	1.0
Group Delay Variation	nsec	-	25	50
Absolute Delay at Fo	µsec	-	0.85	-
Temperature Coefficient	ppm/°C	-	-94	-
Bandwidth at -1.0 dB	MHz	19.80	20.10	-
Bandwidth at -3.0 dB	MHz	20.85	21.15	-
Bandwidth at -40.0 dB	MHz	-	25.80	26.50
Relative Attenuation:				
Lower Sidelobe	dB	40	45	-
Upper Sidelobe	dB	40	45	-
In/Out Return Loss at Fo	dB	-	-	-

Parameters Description	Unit	Minimum	Typical	Maximum
Operation Temperature Range	°C	-30	-	+80
Storage Temperature Range	°C	-40	-	+85
Maximum DC Voltage	V	-	-	10
Maximum Input Power	dBm	-	-	10
Source Impedance (Single Ended) ₁	Ω	-	50	-
Load Impedance (Single Ended) ₁	Ω	-	50	-
Package Size and Type	13.3 x 6.5 x 1.8 mm		V	

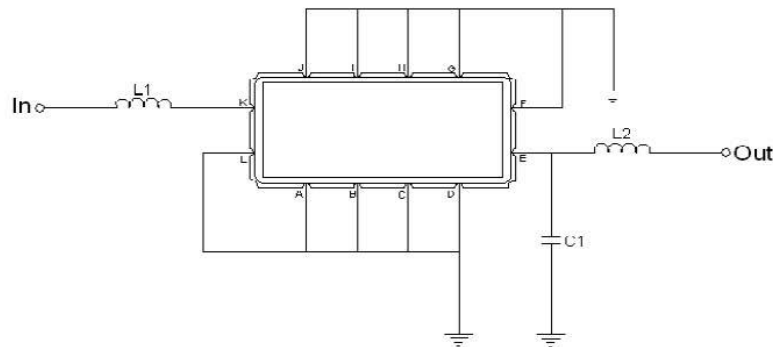


Outline Drawing:



Pin Description	
A B C D F G H I J L	Ground
K	Input
E	Output

Testing Environment:



Test Fixture & Values	
Input	L1=180nH Q >40 ,
Output	L2=150nH Q.>40 , C2=20pF
Source/Load Impedance	50 Ω



Frequency Response:

