



65.0 MHz IF Saw Filter

Part Number: AM65S774

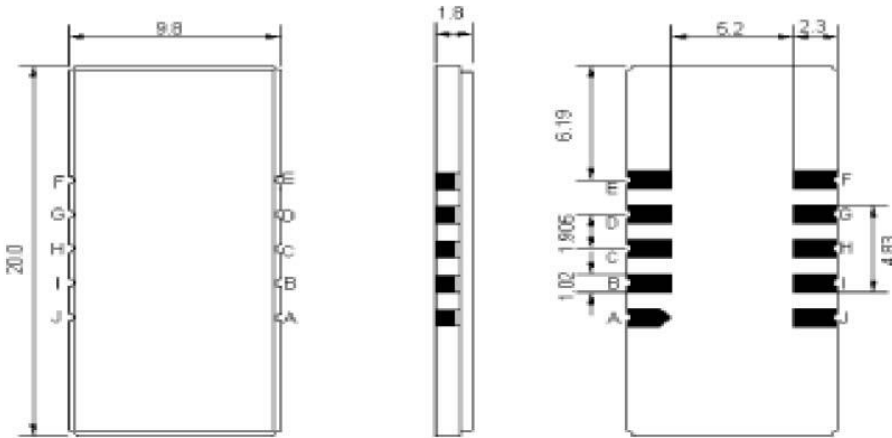


Parameters Description	Unit	Minimum	Typical	Maximum
Center Frequency (Fo)	MHz	-	65.0	-
Insertion Loss at Fo	dB	-	18.5	20.5
Amplitude Ripple Variation at Fo ± 4.875 MHz	dBp-p	-	0.65	1.0
Group Delay Variation	nsec	-	45	100
Absolute Delay at Fo	µsec	-	1.67	-
Temperature Coefficient	ppm/°C	-	-72	-
Bandwidth at -1.0 dB	MHz	9.8	10.0	-
Bandwidth at -3.0 dB	MHz	10.3	10.52	-
Bandwidth at -40.0 dB	MHz	-	12.63	12.8
Bandwidth at -50.0 dB	MHz	-	12.82	13.0
Ultimate Rejection	dB	50	55	-

Parameters Description	Unit	Minimum	Typical	Maximum
Operation Temperature Range	°C	-30		+80
Storage Temperature Range	°C	-40	-	+85
Maximum DC Voltage	V	-	-	10
Maximum Input Power	dBm	-	-	10
Source Impedance (Single Ended) ₁	Ω	-	50	-
Load Impedance (Single Ended) ₁	Ω	-	50	-
Package Size and Type		20.0 x 9.8 x 1.8 mm		D1

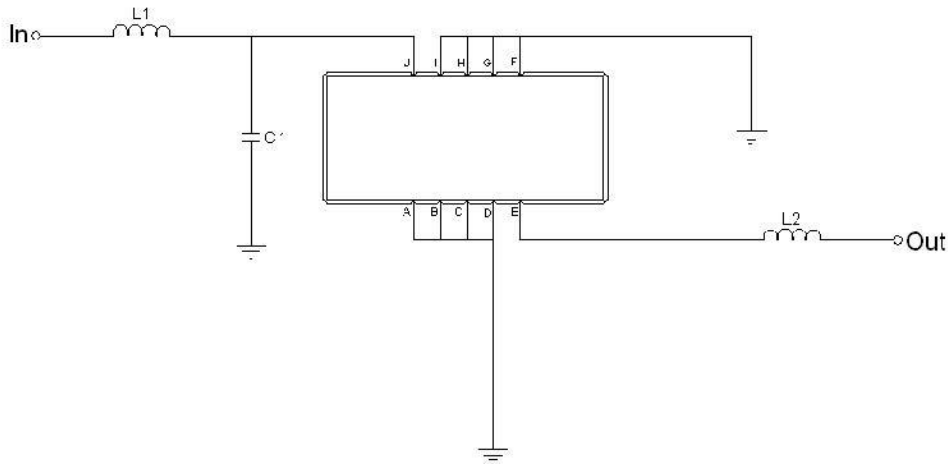


Outline Drawing:



Pin Description	
A B C D F G H I	Ground
J	Input
E	Output

Testing Environment:



Test Fixture & Values	
Input	L1=68nH, C1=24pF
Output	L2=120nH
Source/Load Impedance	50 Ω



65.0 MHz IF Saw Filter

Part Number: AM65S774



Frequency Response:

