



65.8 MHz IF Saw Filter

Part Number: AM65S795

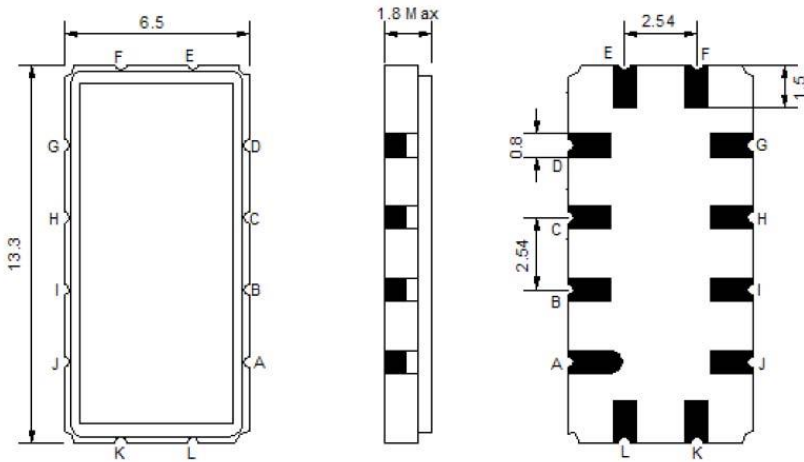


Parameters Description		Unit	Minimum	Typical	Maximum
Center Frequency (Fo)		MHz	65.7	65.80	65.9
Insertion Loss at Fo		dB	-	16.50	18.0
Passband Ripple Variation at Fo ± 3.0 MHz		dB	-	0.30	0.80
Group Delay Variation at Fo ± 3.0 MHz		nsec	-	50	100
Absolute Delay at Fo		µsec	-	1.68	-
Bandwidth at -1.0 dB		MHz	6.40	6.60	-
Bandwidth at -3.0 dB		MHz	-	7.00	-
Bandwidth at -20.0 dB		MHz	-	8.10	-
Bandwidth at -40.0 dB		MHz	-	9.10	9.50
Relative Attenuation	70.44 ~ 70.94 MHz	dB	20	35	-
Temperature Coefficient		ppm/°C	-	-18	-

Parameters Description	Unit	Minimum	Typical	Maximum
Operation Temperature Range	°C	15	25	35
Storage Temperature Range	°C	-40	-	+85
Maximum DC Voltage	V	-	-	10
Maximum Input Power	dBm	-	-	10
Source Impedance (Single Ended) ₁	Ω	-	50	-
Load Impedance (Single Ended) ₁	Ω	-	50	-
Package Size and Type	13.3 x 6.5 x 1.8 mm		V	

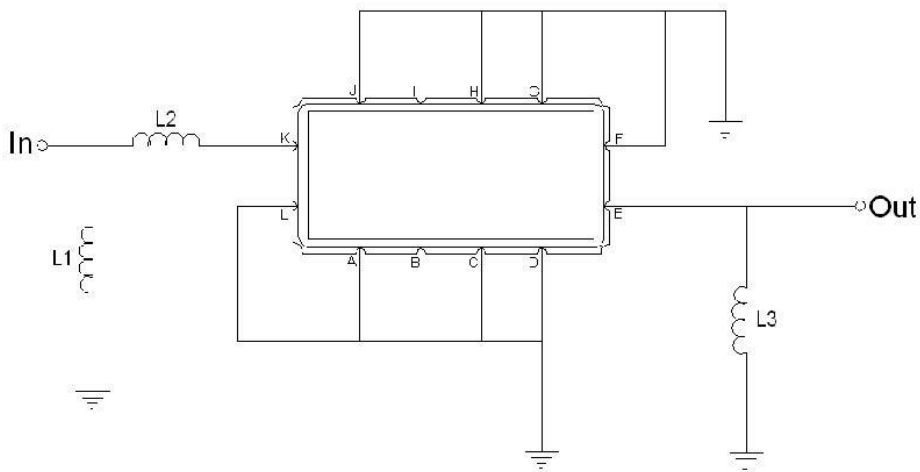


Outline Drawing:



Pin Description	
A B C D F G H I J L	Ground
K	Input
E	Output

Testing Environment:



Test Fixture & Values	
Input	L1 = 39 nH , L2 = 6.8 nH
Output	L3 = 47 nH
Source/Load Impedance	50 Ω



Frequency Response:

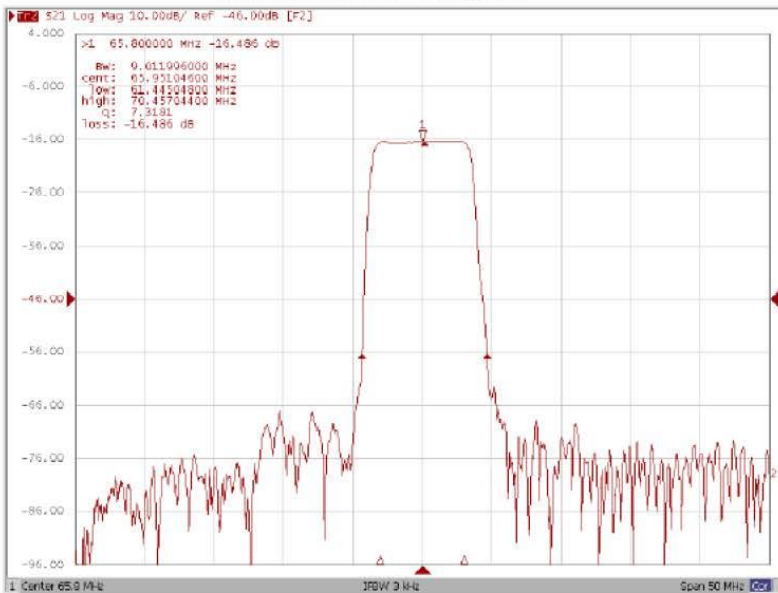
Bandwidth at -1.0 dB



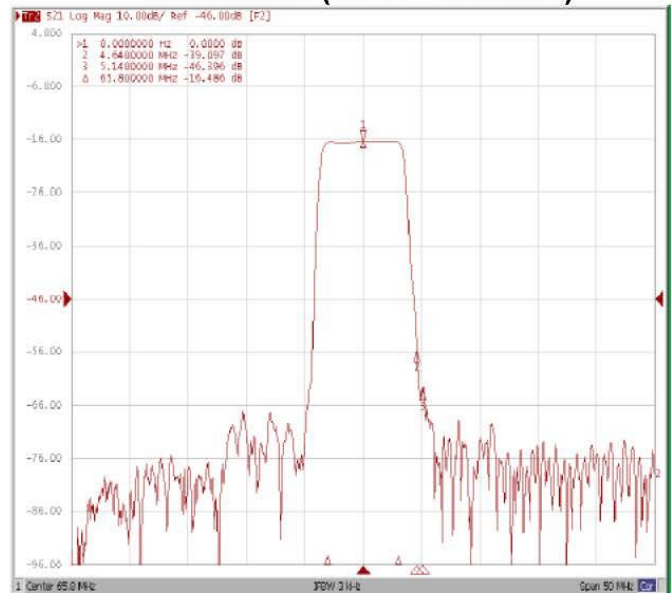
Bandwidth at -20.0 dB



Bandwidth at -40.0 dB



Attenuation (70.44 ~70.94MHz)



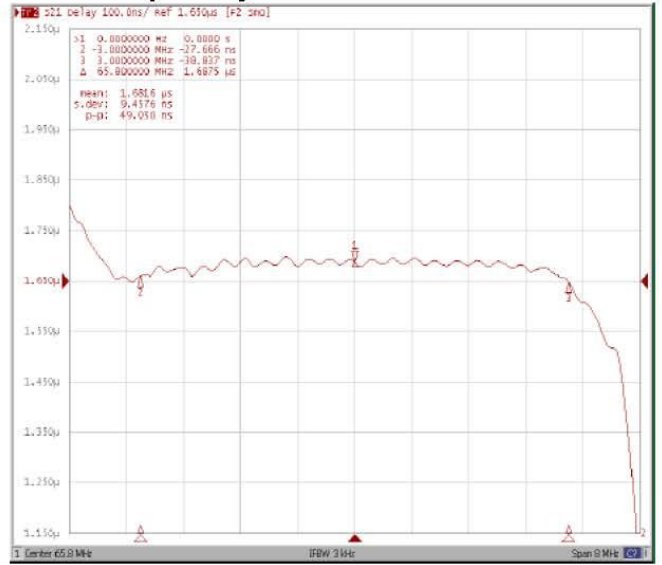


Frequency Response:

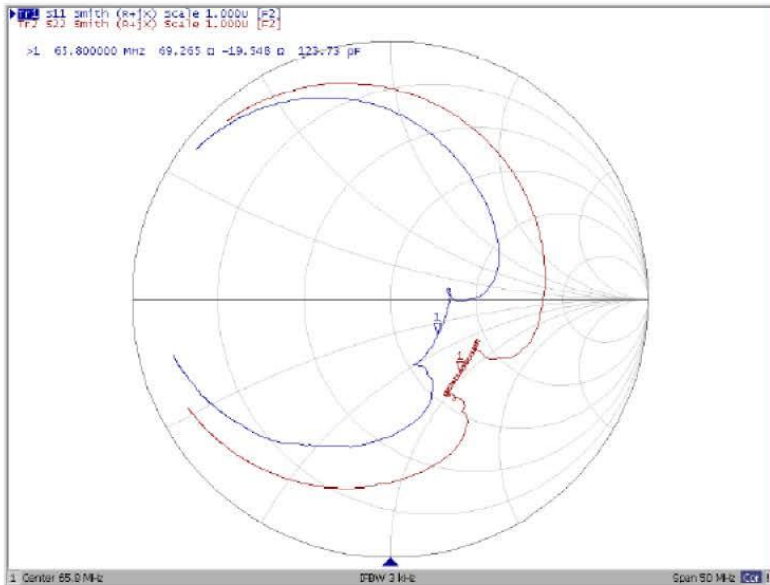
Ripple Variation Fo±3.0MHz



Group Delay Variation Fo±3.0MHz



Smith Chart



SWR

