



67.5 MHz IF Saw Filter
Part Number: AM67S796

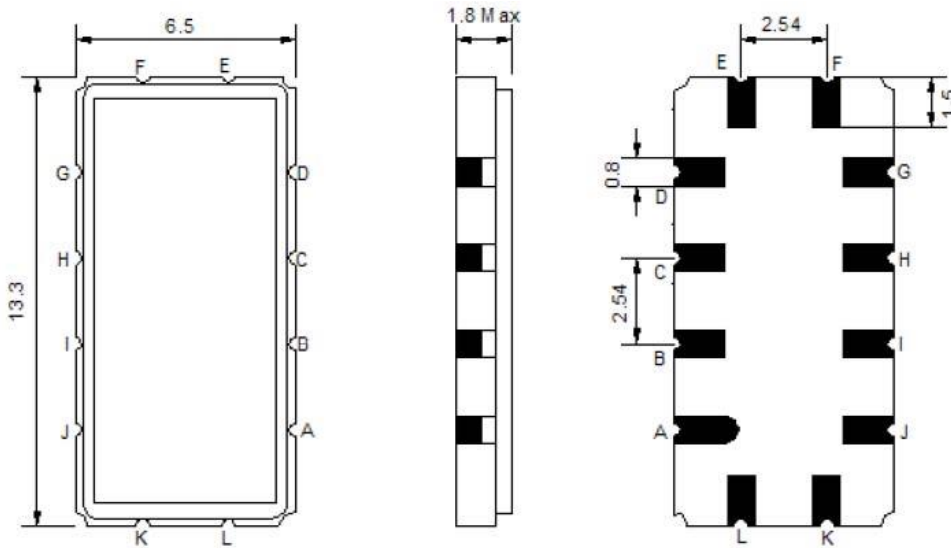


Parameters Description	Unit	Minimum	Typical	Maximum
Center Frequency (Fo)	MHz	67.4	67.5	67.6
Insertion Loss at Fo	dB	-	10.80	13.00
Amplitude Ripple Variation at Fo ± 3.0 MHz	dBp-p	-	0.35	0.70
Group Delay Variation at Fo ± 3.0 MHz	nsec	-	60	80
Absolute Delay at Fo	µsec	-	1.09	-
Temperature Coefficient	ppm/°C	-	-86	-
Bandwidth at -1.0 dB	MHz	10.40	10.70	-
Bandwidth at -3.0 dB	MHz	-	11.30	-
Bandwidth at -40.0 dB	MHz	-	14.25	14.80
Input VSWR at Fo	-	-	2.7	-
Output VSWR at Fo	-	-	2.2	-
Relative Attenuation				
Lower Sidelobe	dB	40	45	-
Upper Sidelobe	dB	40	45	-

Parameters Description	Unit	Minimum	Typical	Maximum
Operation Temperature Range	°C	-30	-	+85
Storage Temperature Range	°C	-40	-	+85
Maximum DC Voltage	V	-	-	10
Maximum Input Power	dBm	-	-	10
Source Impedance (Single Ended) ₁	Ω	-	50	-
Load Impedance (Single Ended) ₁	Ω	-	50	-
Package Size and Type	13.3 x 6.5 x 1.8 mm		V	

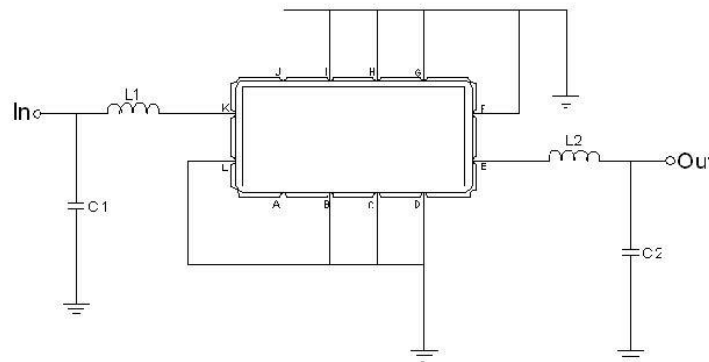


Outline Drawing:



Pin Description	
A B C D F G H I J L	Ground
K	Input
E	Output

Testing Environment:

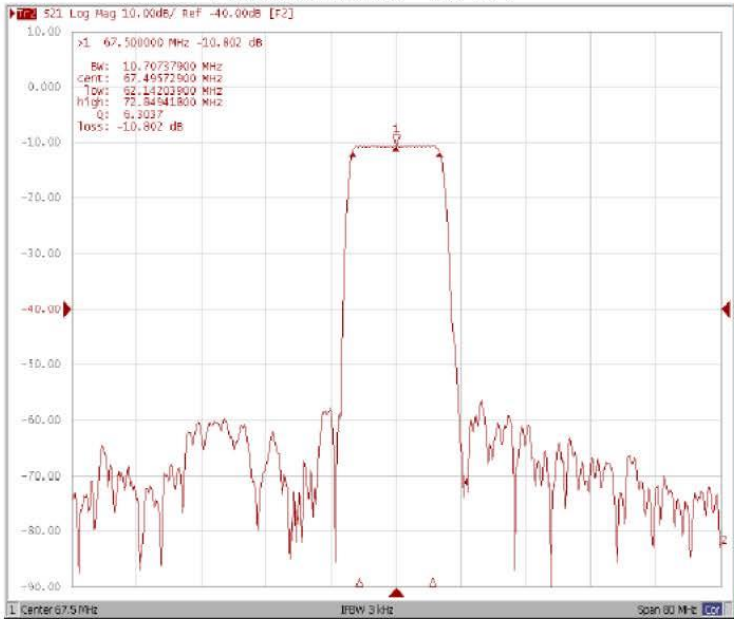


Test Fixture & Values	
Input	L1=220nH, C1=22pF
Output	L2=220nH, C2=22pF
Source/Load Impedance	50 Ω

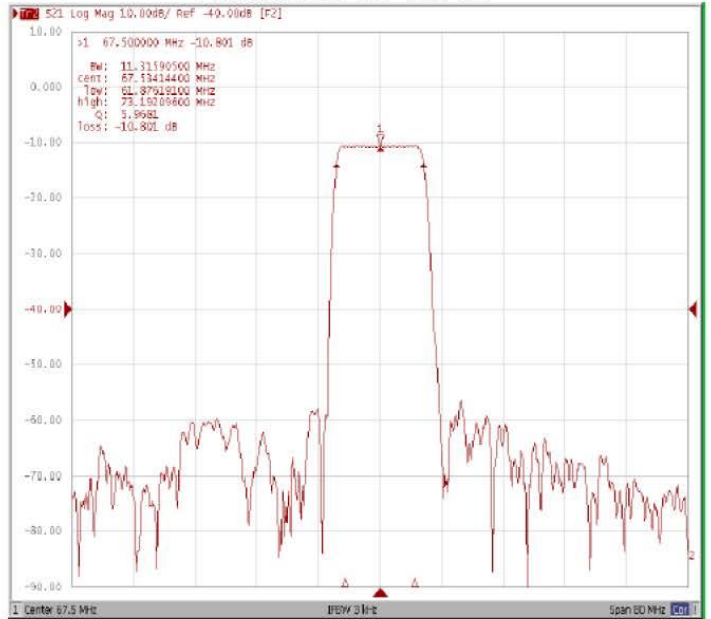


Frequency Response:

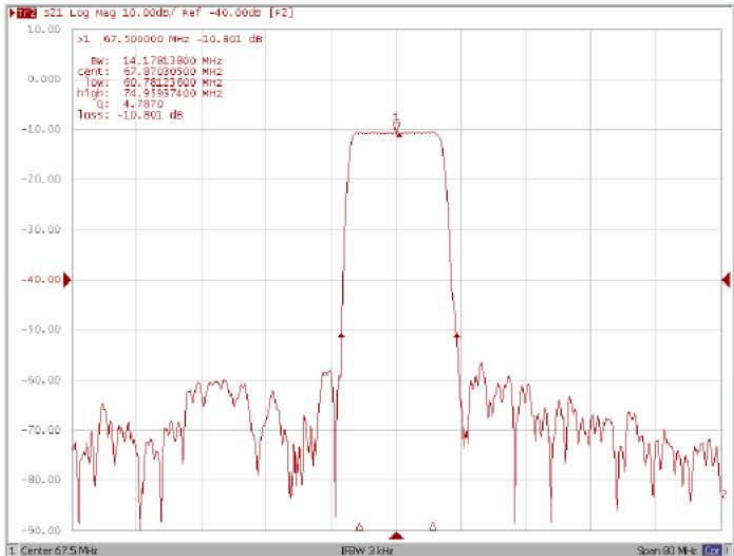
Bandwidth at -1.0 dB



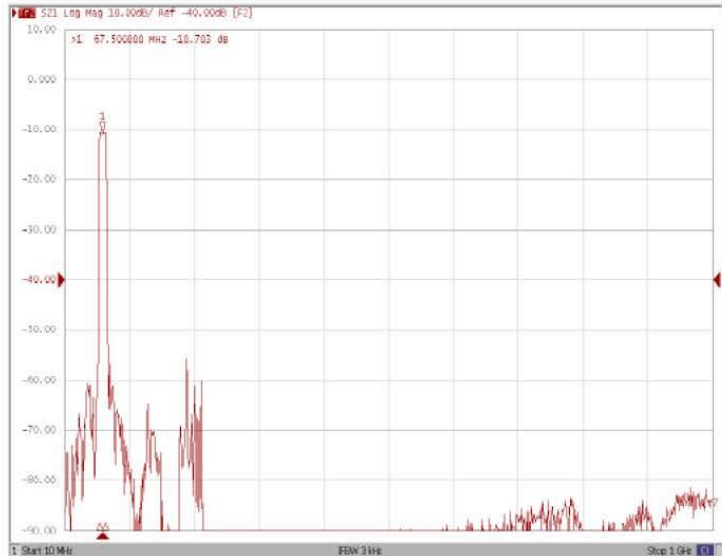
Bandwidth at -3.0 dB



Bandwidth at -40.0 dB



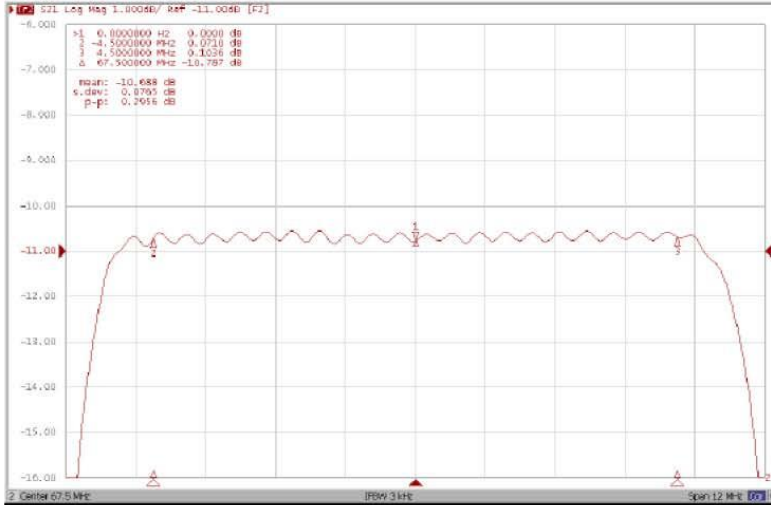
Wide-Band



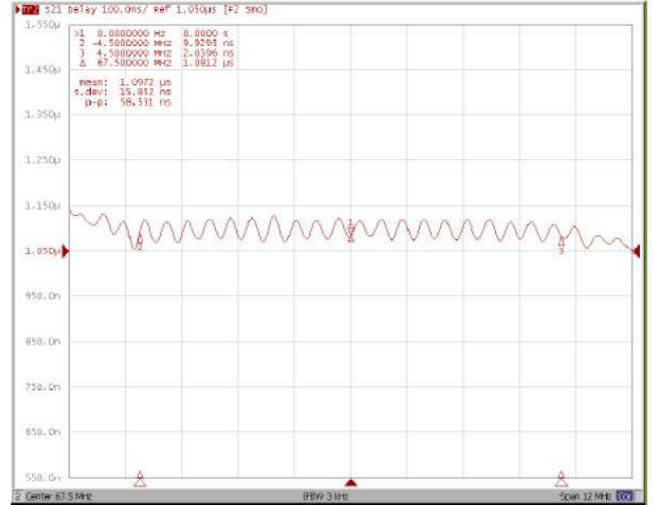


Frequency Response:

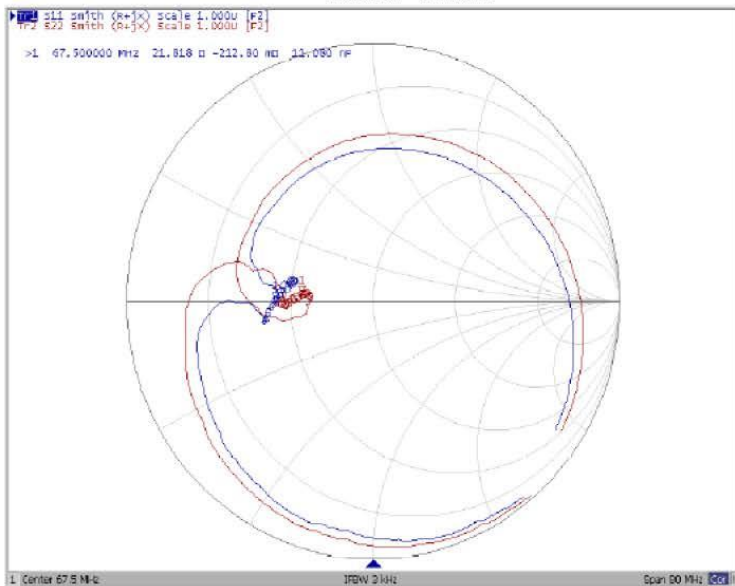
Ripple Variation Fo±4.5MHz



Group Delay Variation Fo±4.5MHz



Smith Chart



SWR

