



# 70 MHz Saw Filter

**Part Number: AM70S1050**



Parameters Description	Unit	Minimum	Typical	Maximum
Center Frequency (Fo)	MHz	69.92	70.0	70.08
Insertion Loss at Fo	dB	-	21.6	24.0
Amplitude Ripple Variation	dBp-p	-	0.5	0.95
Group Delay Variation	nsec	-	47	100
Absolute Delay at Fo	µsec	-	2.92	-
Temperature Coefficient	ppm/°C	-	-20	-
Bandwidth at -1.0 dB	MHz	5.0	5.28	-
Bandwidth at -3.0 dB	MHz	-	5.68	-
Bandwidth at -40.0 dB	MHz	-	7.39	7.50
Ultimate Rejection	dB	50	55	-

Parameters Description	Unit	Minimum	Typical	Maximum
Operation Temperature Range	°C	-20	-	+70
Storage Temperature Range	°C	-40	-	+85
Maximum DC Voltage	V	-	-	10
Maximum Input Power	dBm	-	-	10
Source Impedance (Single Ended) <sub>1</sub>	Ω	-	50	-
Load Impedance (Single Ended) <sub>1</sub>	Ω	-	50	-
Package Size and Type	20.0 x 12.6 x 5.05 mm		D1	

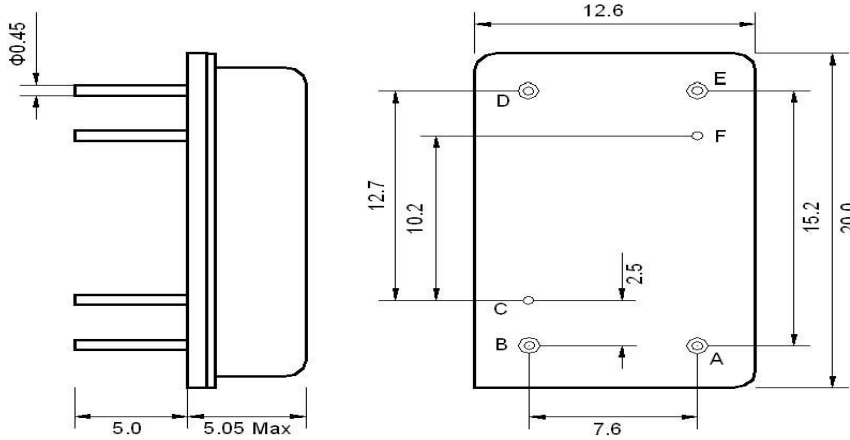


# 70 MHz Saw Filter

## Part Number: AM70S1050

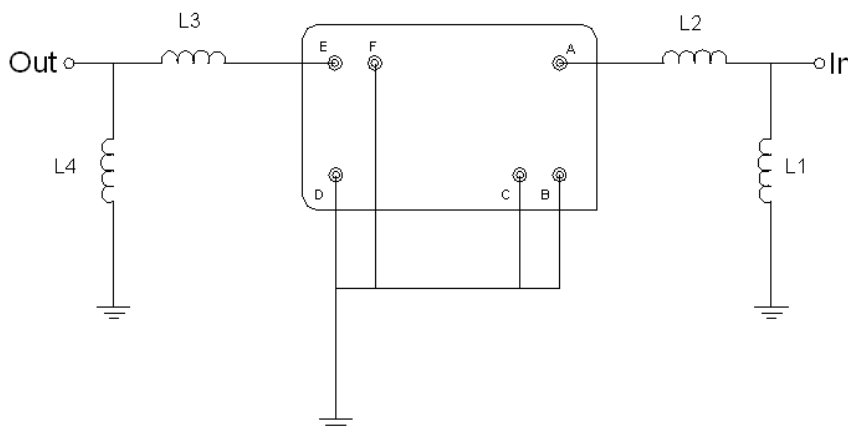


### Outline Drawing:



Pin Description	
B, C, D, F	Ground
A	Input
E	Output

### Testing Environment:



Test Fixture & Values		
Input	L1 = 120 nH	L2 = 82 nH
Output	L3 = 68 nH	L4 = 120 nH
Source/Load Impedance	50 $\Omega$	



**ANATECH ELECTRONICS INC**  
RF & Microwave Filters & Products

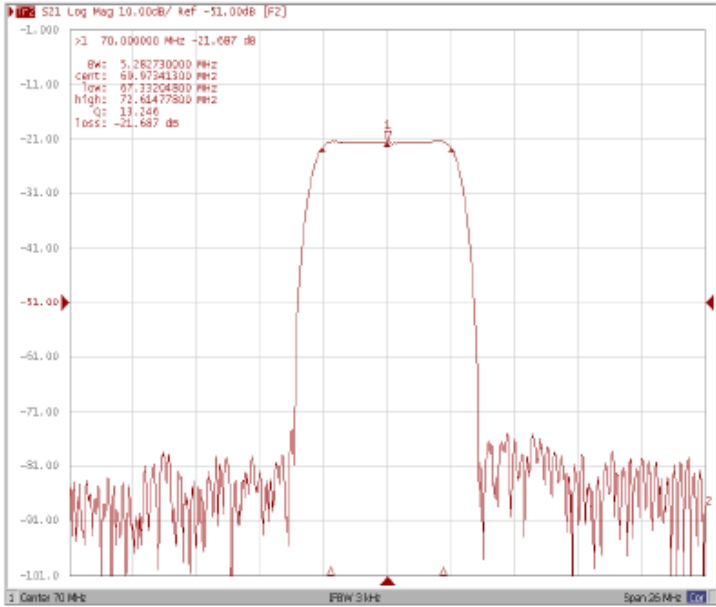
# 70 MHz Saw Filter

**Part Number: AM70S1050**

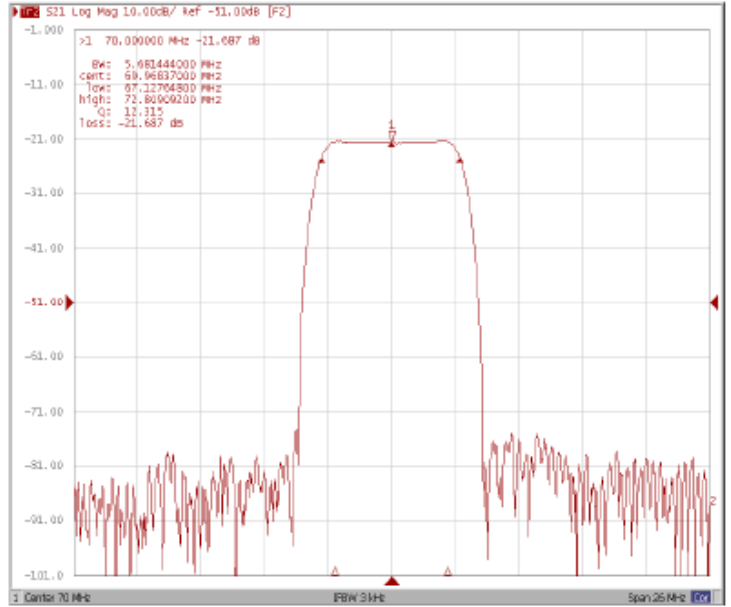


## Frequency Response:

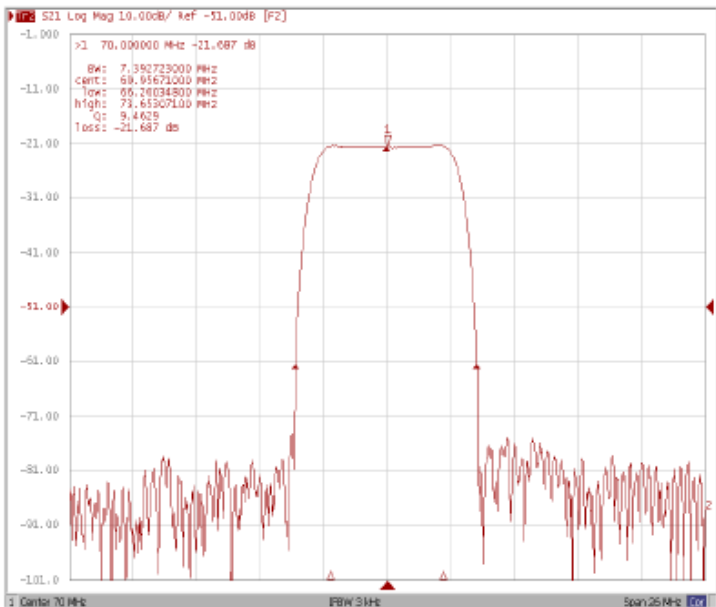
**Bandwidth at -1.0 dB**



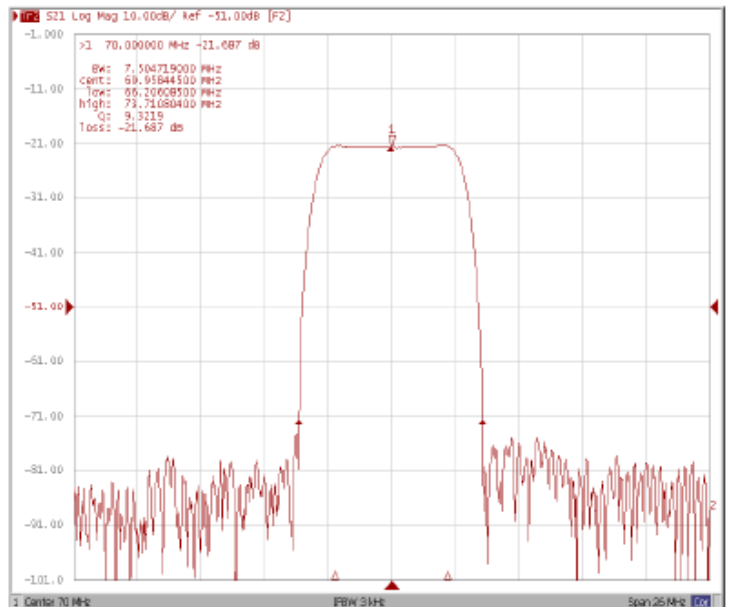
**Bandwidth at -3.0 dB**



**Bandwidth at -40.0 dB**



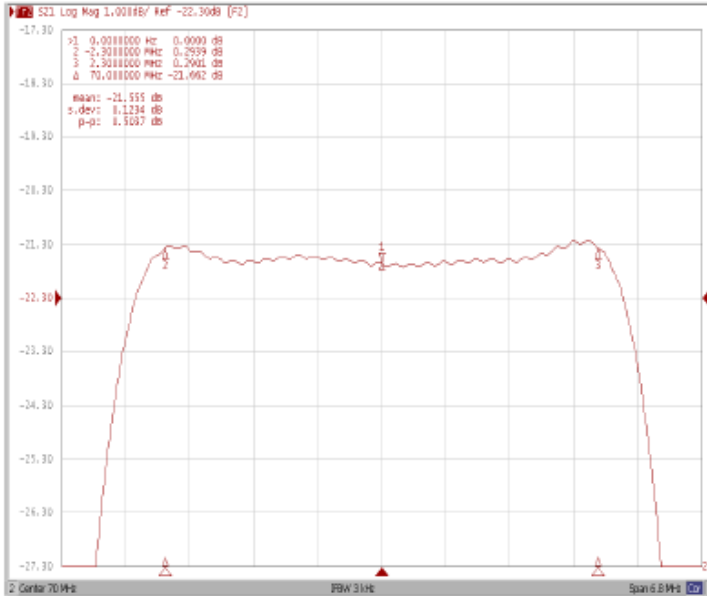
**Bandwidth at -50.0 dB**



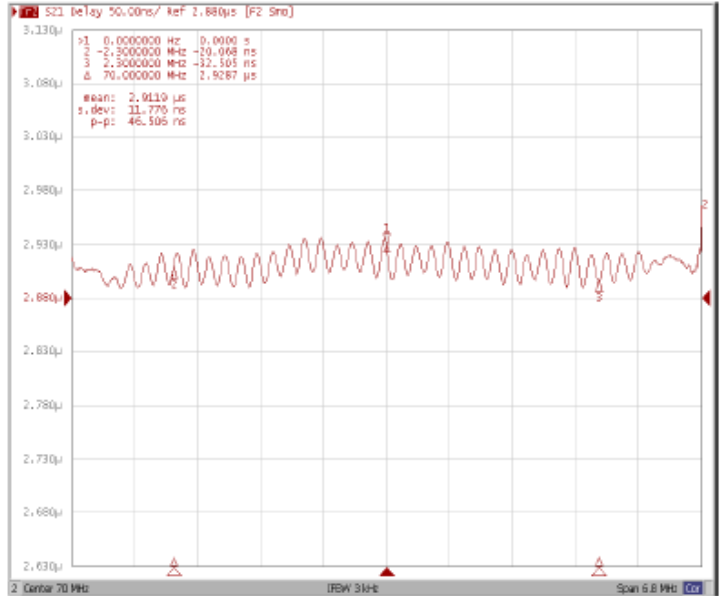


## Frequency Response:

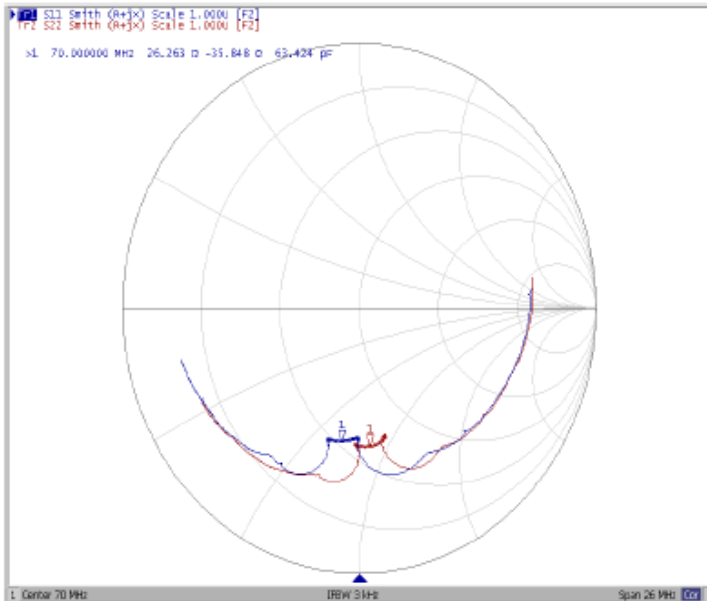
Ripple Variation Fo $\pm$ 2.3MHz



Group Delay Variation Fo $\pm$ 2.3MHz



Smith Chart



VSWR

