



70.0 MHz Saw Filter

Part Number: AM70S205



Parameters Description	Unit	Minimum	Typical	Maximum
Center Frequency (Fo)	MHz	69.92	70.0	70.08
Insertion Loss at Fo	dB	-	23.0	28.0
Passband Ripple Variation	dB	-	0.4	0.8
Group Delay Variation	nsec	-	100	150
Absolute Delay at Fo	µsec	-	2.6	-
Temperature Coefficient	ppm/°C	-	-0.03	-
Bandwidth at -1.0 dB	MHz	0.91	1.0	-
Bandwidth at -3.0 dB	MHz	1.1	1.2	-
Bandwidth at -40.0 dB	MHz	-	1.95	2.0
Ultimate Rejection	dB	40	50	-

Parameters Description	Unit	Minimum	Typical	Maximum
Operation Temperature Range	°C	-30	-	+80
Storage Temperature Range	°C	-40	-	+85
Maximum DC Voltage	V	-	-	10
Maximum Input Power	dBm	-	-	10
Source Impedance (Single Ended) ₁	Ω	-	50	-
Load Impedance (Single Ended) ₁	Ω	-	50	-
Package Size and Type	20.2 x 12.6 x 5.3 mm		D	

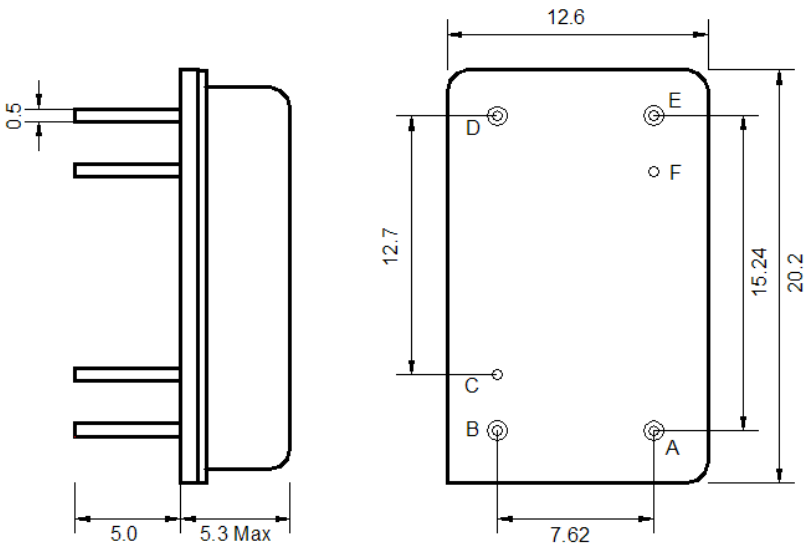


70.0 MHz Saw Filter

Part Number: AM70S205

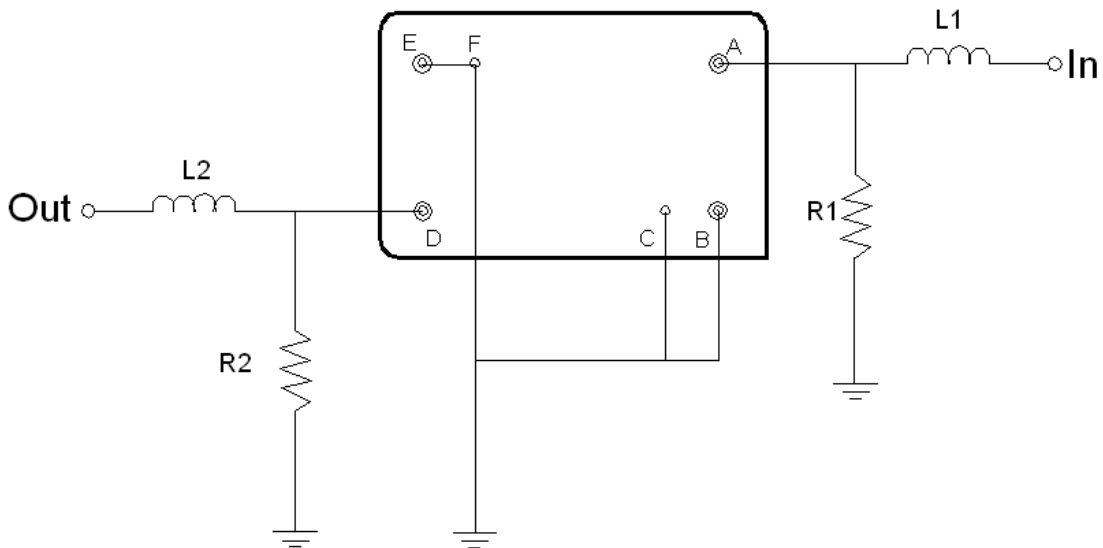


Outline Drawing:



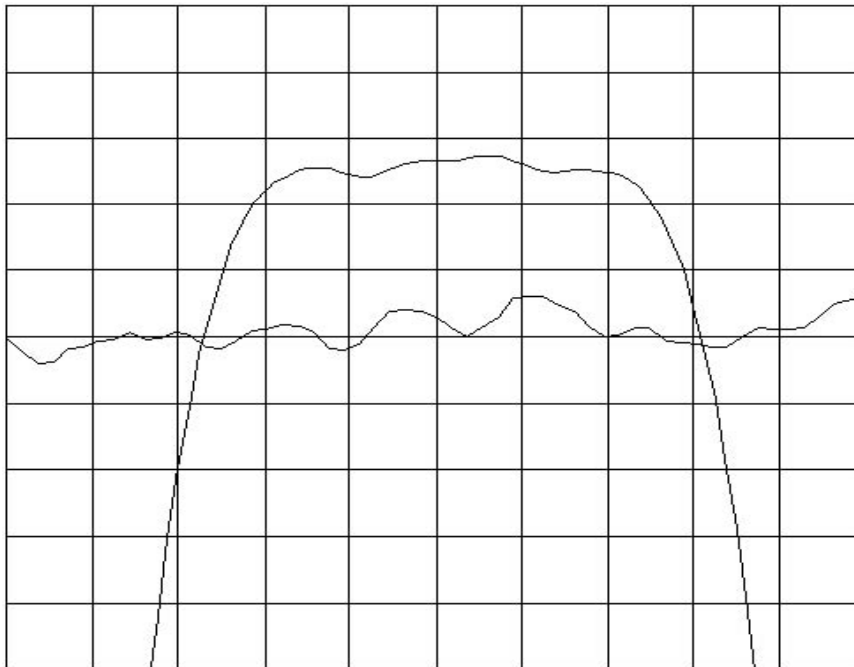
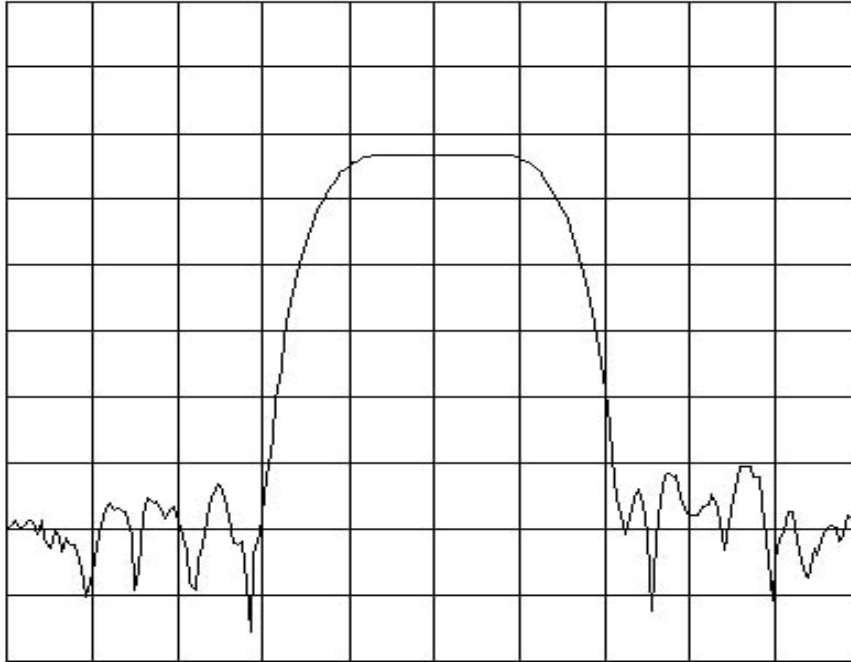
Pin Description	
B C E F	Ground
A	Input
D	Output

Testing Environment:





Frequency Response:



Horizontal: 0.2 MHz/Div

Vertical: 1 dB/Div

Vertical: 200 ns/Div