



ANATECH ELECTRONICS INC
RF & Microwave Filters & Products

**70 MHz IF Saw Filter
5.40 MHz Bandwidth**

Part Number: AM70S551

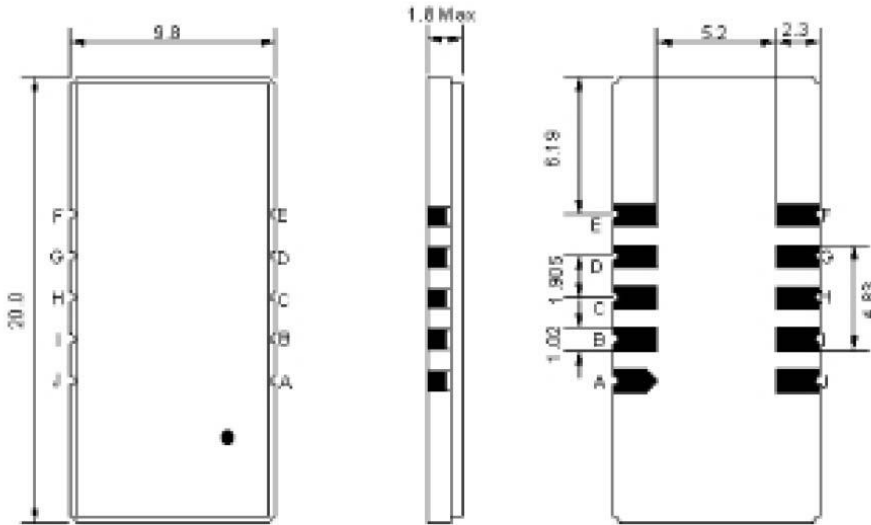


Parameters Description	Unit	Minimum	Typical	Maximum
Center Frequency (Fo)	MHz	69.90	70.00	70.10
Insertion Loss at Fo	dB	-	15.80	18.00
Passband Ripple Variation at Fo ± 2.4 MHz	dB	-	0.55	1.0
Group Delay Variation at Fo ± 2.4 MHz	nsec	-	135	180
Absolute Delay at Fo	µsec	-	1.96	-
Temperature Coefficient	ppm/°C	-	-72	-
Bandwidth at -1.0 dB	MHz	5.20	5.40	-
Bandwidth at -3.0 dB	MHz	5.70	5.82	-
Bandwidth at -40.0 dB	MHz	-	7.54	7.70
Bandwidth at -50.0 dB	MHz	-	7.70	-
Ultimate Rejection	dB	50	57	-

Parameters Description	Unit	Minimum	Typical	Maximum
Operation Temperature Range	°C	-	25	-
Storage Temperature Range	°C	-40	-	+85
Maximum DC Voltage	V	-	-	10
Maximum Input Power	dBm	-	-	10
Source Impedance (Single Ended) ₁	Ω	-	50	-
Load Impedance (Single Ended) ₁	Ω	-	50	-
Package Size and Type	20.0 x 9.8 x 1.8 mm		D1	

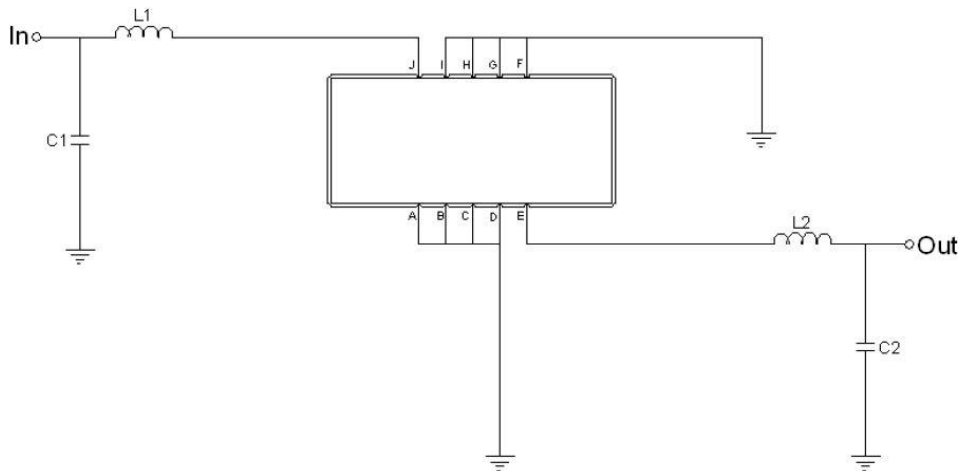


Outline Drawing:



Pin Description	
A B C D F G H I	Ground
J	Input
E	Output

Testing Environment:



Test Fixture & Values	
Input	L1 = 82 nH , C1 = 15 pF
Output	L2 = 82 nH , C2 = 15 pF
Source/Load Impedance	50 Ω



ANATECH ELECTRONICS INC
RF & Microwave Filters & Products

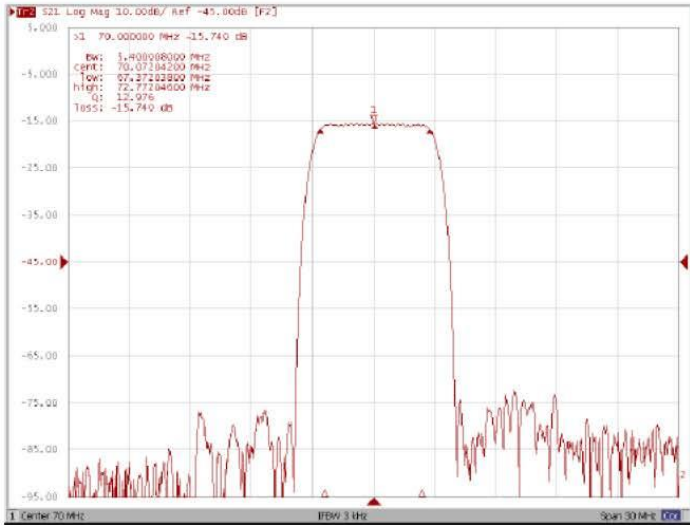
70 MHz IF Saw Filter 5.40 MHz Bandwidth

Part Number: AM70S551

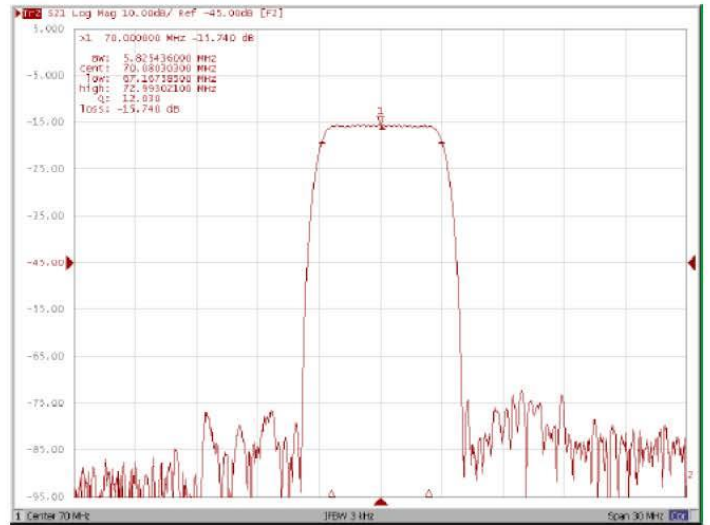


Frequency Response:

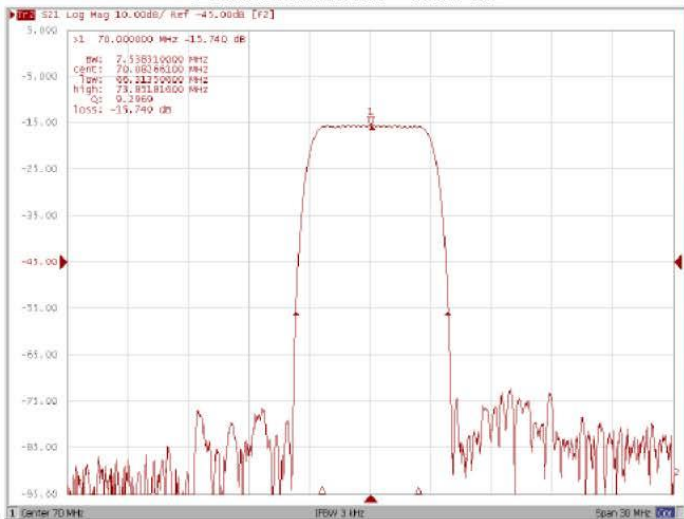
Bandwidth at -1.0 dB



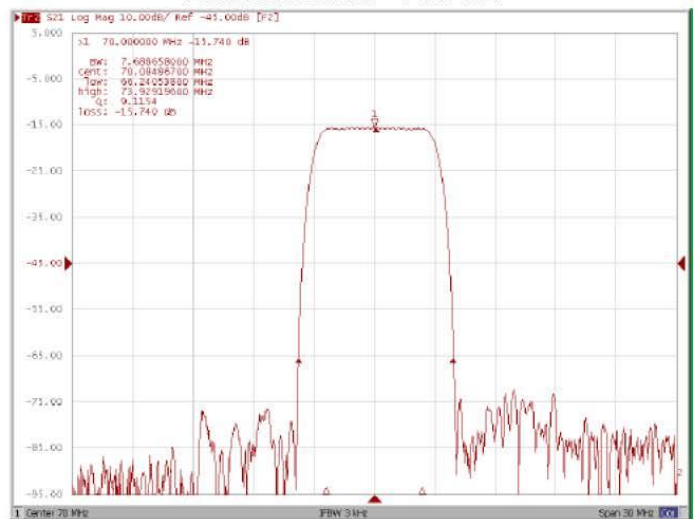
Bandwidth at -3.0 dB



Bandwidth at -40.0 dB



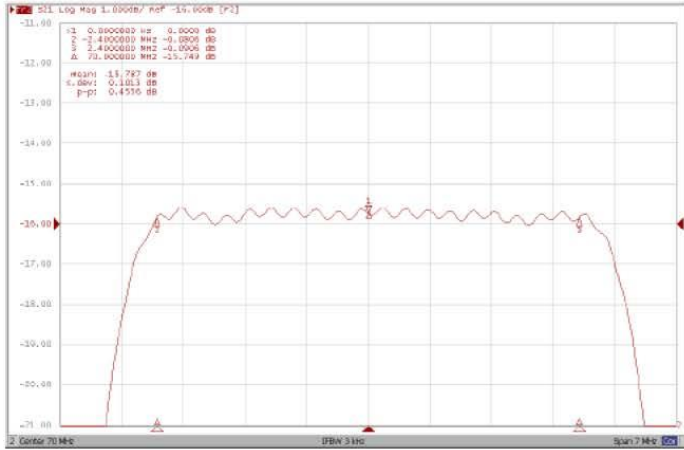
Bandwidth at -50.0 dB



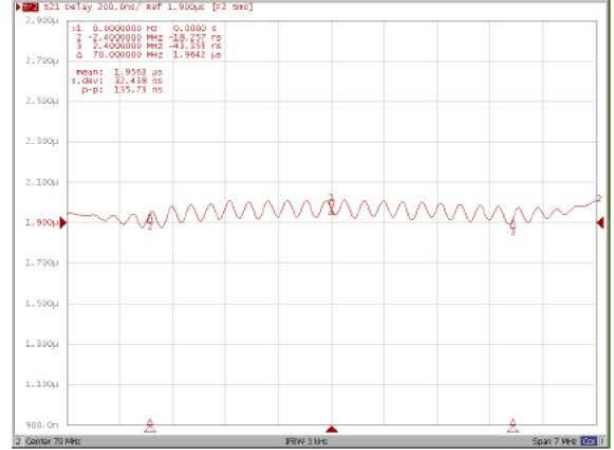


Frequency Response:

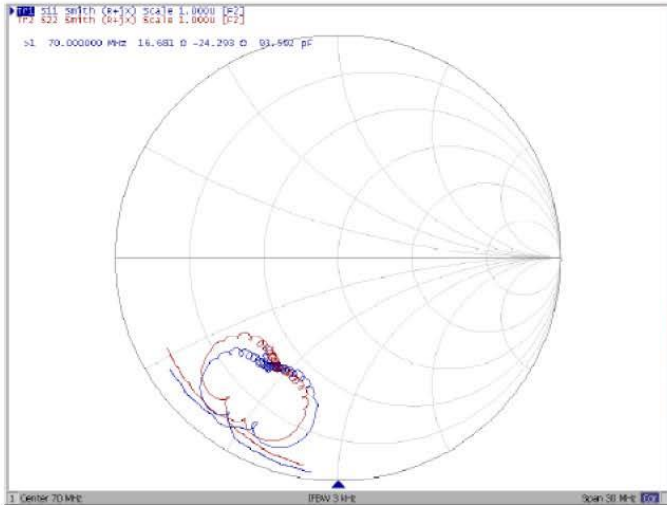
Ripple Variation Fo±2.4MHz



Group Delay Variation Fo±2.4MHz



Smith Chart



VSWR

