



# 70 MHz IF Saw Filter 19 MHz Bandwidth



**ANATECH ELECTRONICS INC**  
RF & Microwave Filters & Products

**Part Number: AM70S555**

Parameters Description	Unit	Minimum	Typical	Maximum
Center Frequency (Fo)	MHz	70.05	70.1	70.20
Insertion Loss at Fo	dB	-	27.3	29.0
Amplitude Ripple within Fo ± 9.65 MHz	dBp-p	-	0.85	1.3
Group Delay Variation within Fo ± 9.65 MHz	nsec	-	40	80
Absolute Delay at Fo	µsec	-	1.68	-
Temperature Coefficient	ppm/°C	-	-72	-
Bandwidth at -1.0 dB	MHz	19.40	19.51	-
Bandwidth at -3.0 dB	MHz	-	19.98	-
Bandwidth at -40.0 dB	MHz	-	21.88	22.0
<b>Relative Attenuation:</b>				
Fo ± 14.42 MHz	dB	-	50	-
Lower Sidelobe	dB	-	45	-
Upper Sidelobe	dB	-	45	-

Parameters Description	Unit	Minimum	Typical	Maximum
Operation Temperature Range	°C	-	+25	-
Storage Temperature Range	°C	-40	-	+85
Maximum DC Voltage	V	-	-	10
Maximum Input Power	dBm	-	-	10
Source Impedance (Single Ended) <sub>1</sub>	Ω	-	50	-
Load Impedance (Single Ended) <sub>1</sub>	Ω	-	50	-
Package Size and Type		13.3 x 6.5 x 1.8 mm		V



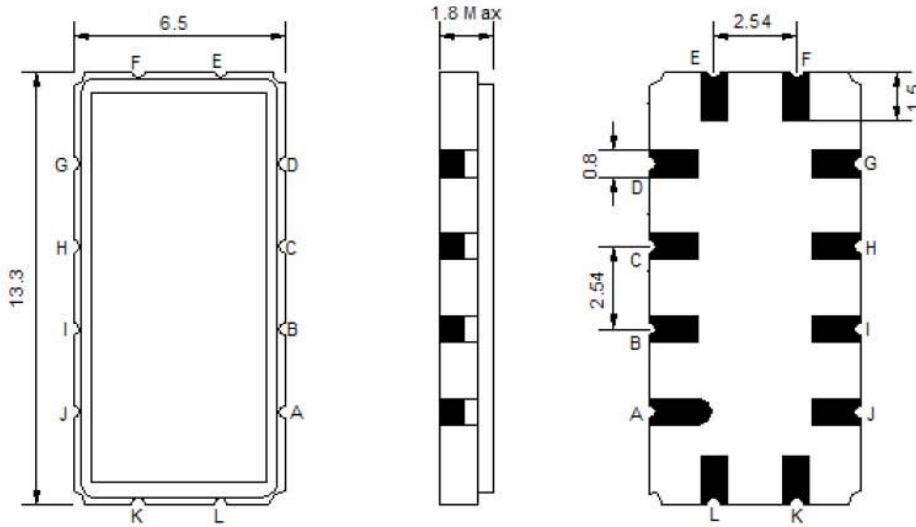
# 70 MHz IF Saw Filter 19 MHz Bandwidth

Part Number: AM70S555



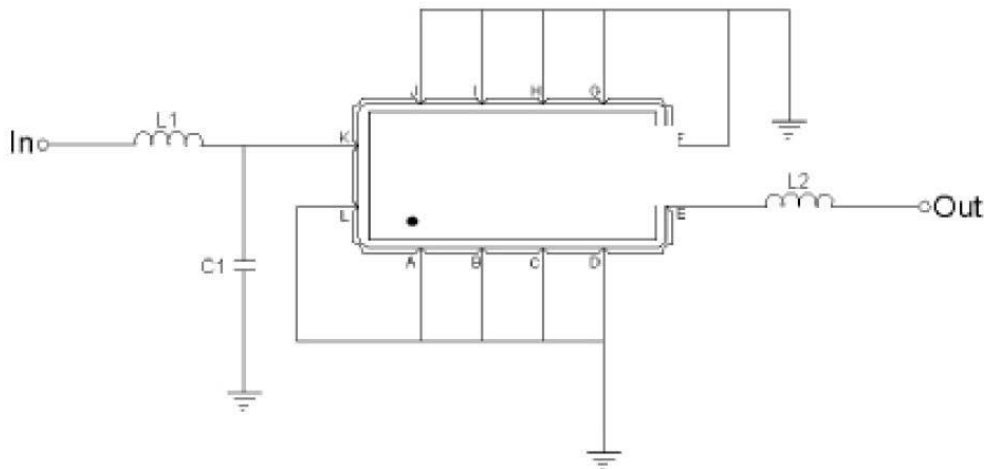
**ANATECH ELECTRONICS INC**  
RF & Microwave Filters & Products

## Outline Drawing:



Pin Description	
A B C D F G H I J L	Ground
K	Input
E	Output

## Testing Environment:



Test Fixture & Values		
Input	L1=100nH ,	C1=20pF
Output	L2=100nH ,	
Source/Load Impedance	50 Ω	



# 70 MHz IF Saw Filter 19 MHz Bandwidth

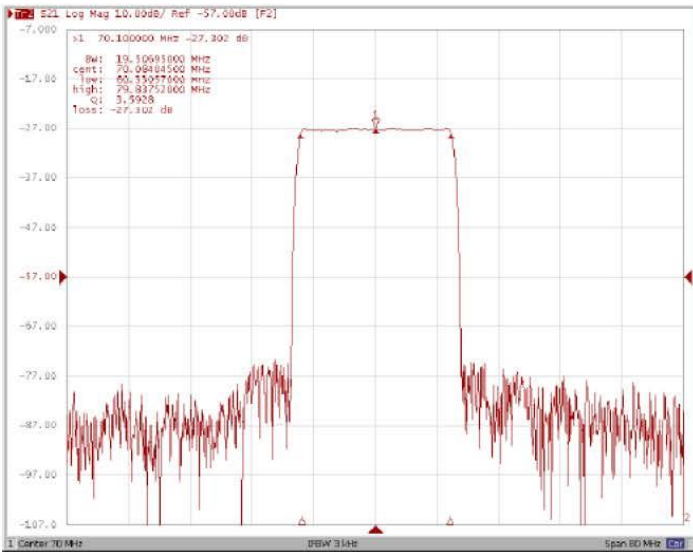
## Part Number: AM70S555



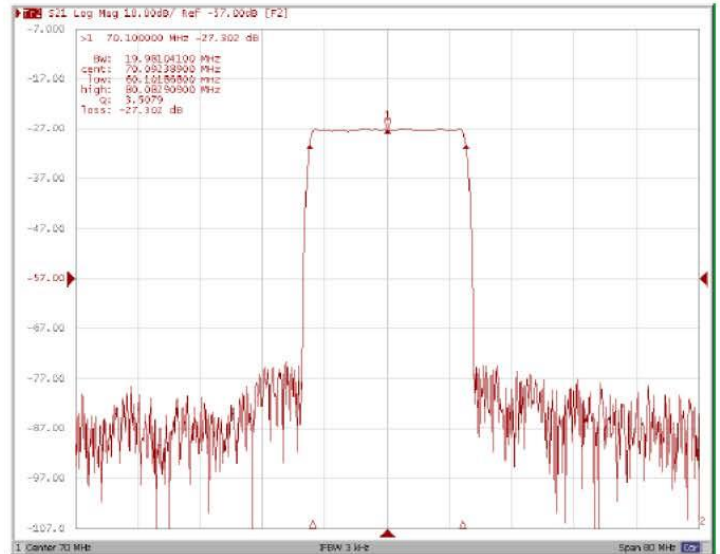
**ANATECH ELECTRONICS INC**  
RF & Microwave Filters & Products

### Frequency Response:

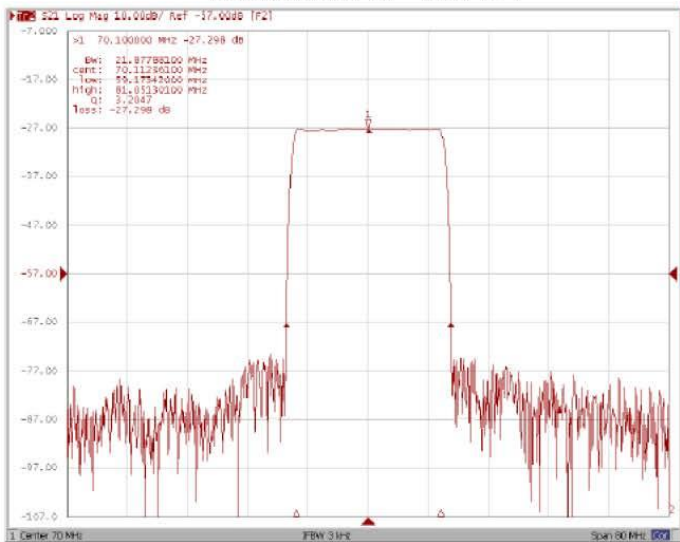
#### Bandwidth at -1.0 dB



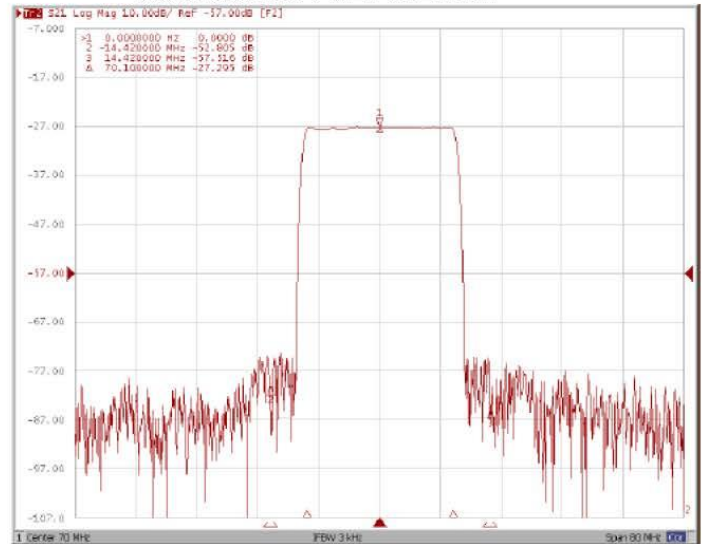
#### Bandwidth at -3.0 dB



#### Bandwidth at -40.0 dB



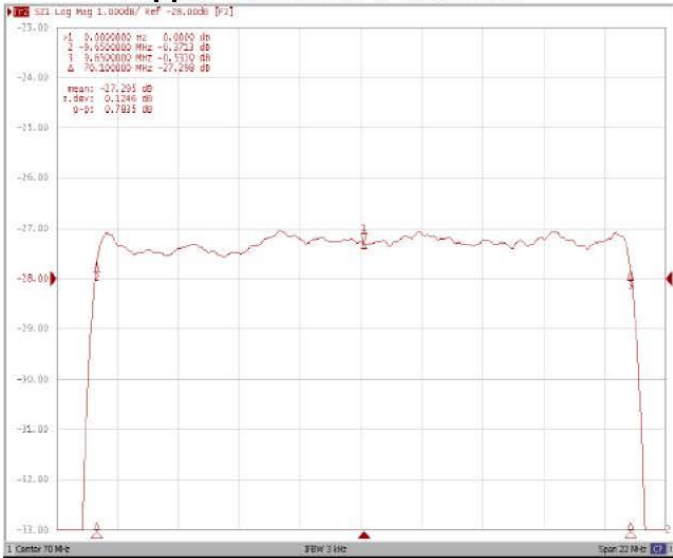
#### Attenuation Fo±14.42MHz



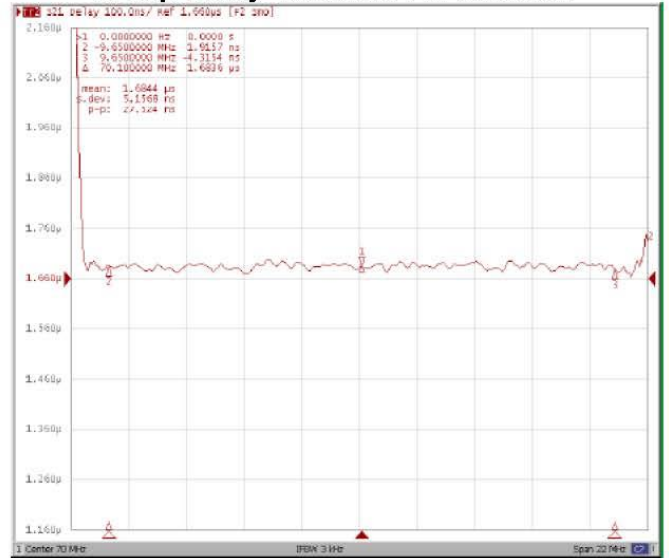


### Frequency Response:

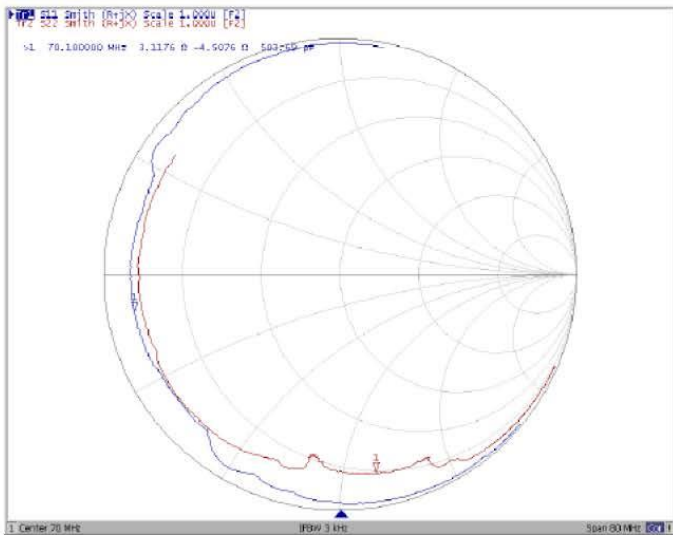
#### Ripple Variation Fo±9.65MHz



#### Group Delay Variation Fo±9.65MHz



#### Smith Chart



#### SWR

