



ANATECH ELECTRONICS INC
RF & Microwave Filters & Products

70 MHz IF Saw Filter 20 MHz Bandwidth

Part Number: AM70S557



Parameters Description	Unit	Minimum	Typical	Maximum
Center Frequency (Fo)	MHz	69.90	70.00	70.10
Insertion Loss at Fo	dB	-	23.5	25.0
Amplitude Ripple within Fo ± 9.65 MHz	dBp-p	-	0.60	1.0
Group Delay Variation within Fo ± 9.65 MHz	nsec	-	40	80
Absolute Delay at Fo	µsec	-	2.26	-
Temperature Coefficient	ppm/°C	-	-72	-
Bandwidth at -1.0 dB	MHz	-	20.10	-
Bandwidth at -3.0 dB	MHz	20.30	20.46	-
Bandwidth at -40.0 dB	MHz	-	21.78	21.90
Lower Sidelobe	dB	50	54	-
Upper Sidelobe	dB	50	54	-

Parameters Description	Unit	Minimum	Typical	Maximum
Operation Temperature Range	°C	-	+25	-
Storage Temperature Range	°C	-40	-	+85
Maximum DC Voltage	V	-	-	10
Maximum Input Power	dBm	-	-	10
Source Impedance (Single Ended) ₁	Ω	-	50	-
Load Impedance (Single Ended) ₁	Ω	-	50	-
Package Size and Type		13.3 x 6.5 x 1.8 mm		V



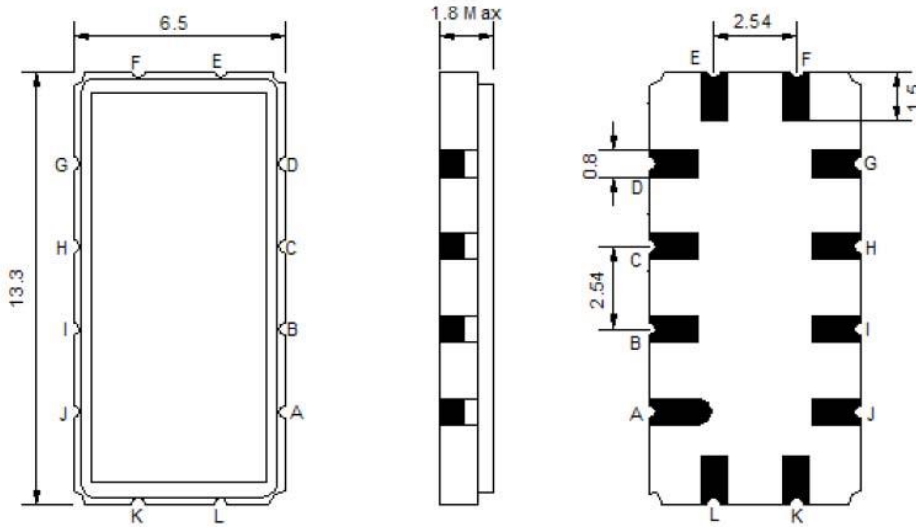
70 MHz IF Saw Filter 20 MHz Bandwidth

Part Number: AM70S557



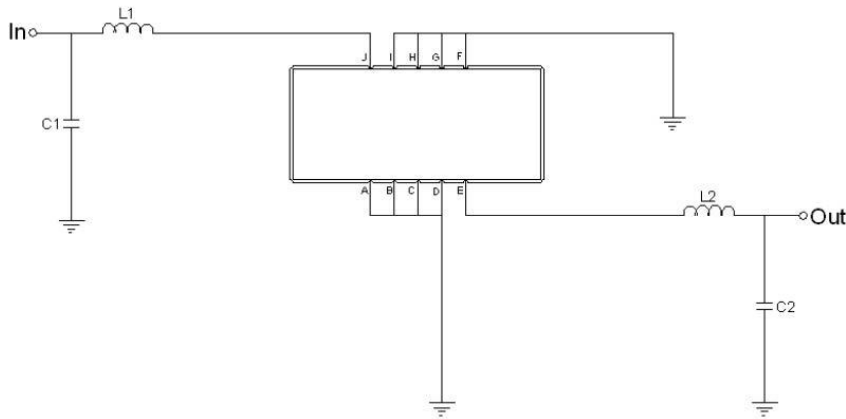
ANATECH ELECTRONICS INC
RF & Microwave Filters & Products

Outline Drawing:



Pin Description	
A B C D F G H I J L	Ground
K	Input
E	Output

Testing Environment:



Test Fixture & Values	
Input	L1=120nH
Output	L2=220nH , C2=6pF
Source/Load Impedance	50 Ω



70 MHz IF Saw Filter 20 MHz Bandwidth

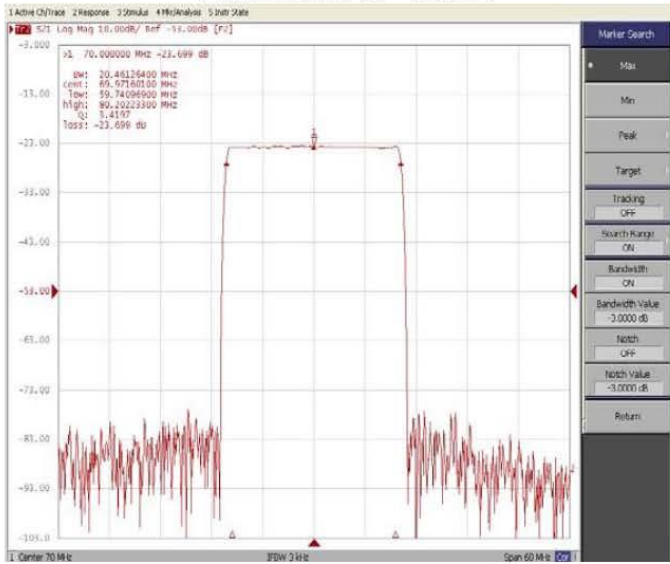
Part Number: AM70S557



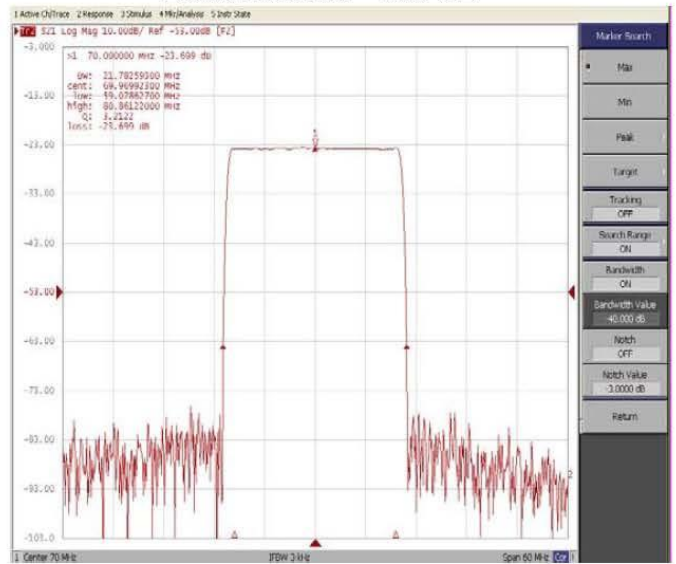
ANATECH ELECTRONICS INC
RF & Microwave Filters & Products

Frequency Response:

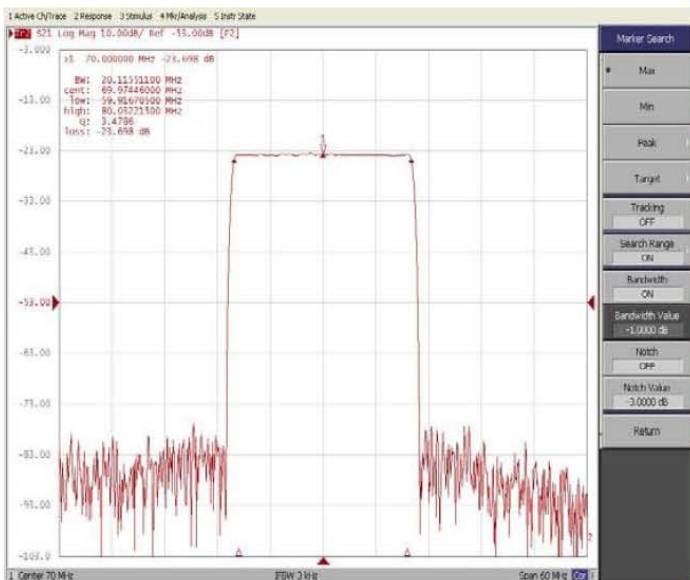
Bandwidth at -3.0 dB



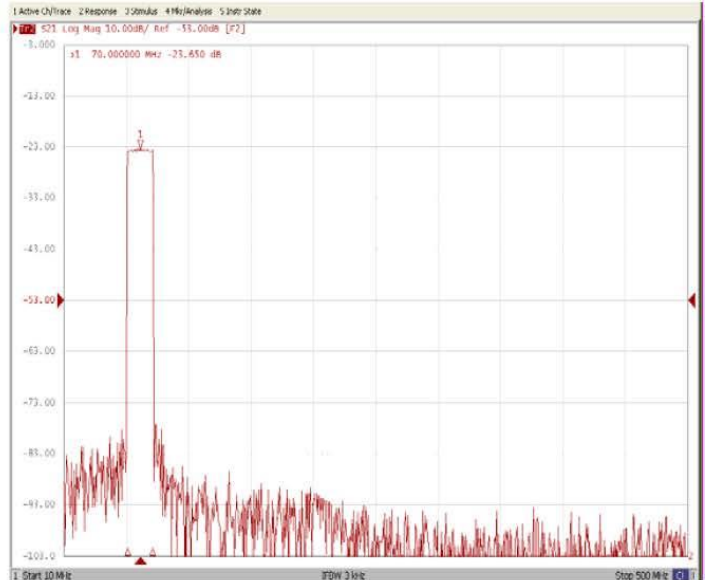
Bandwidth at -40.0 dB



Bandwidth at -1.0 dB



Wide Band





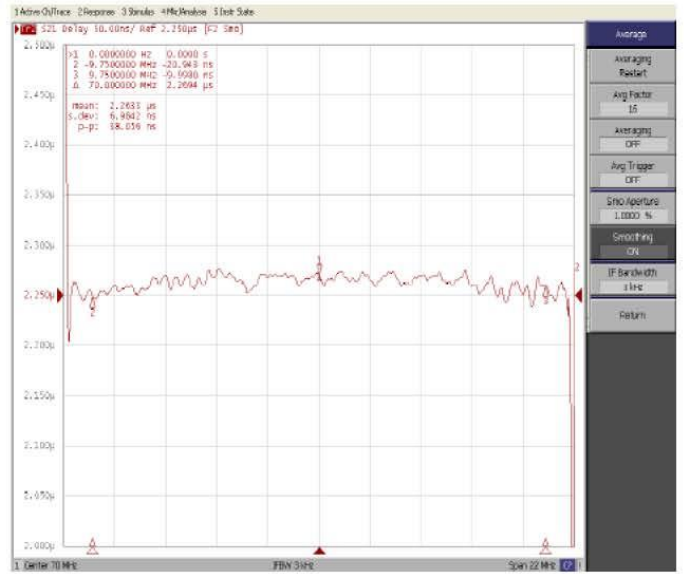
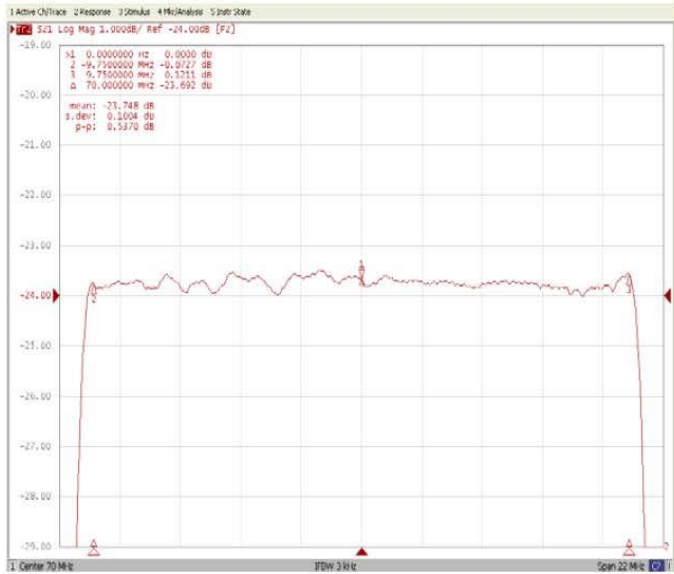
70 MHz IF Saw Filter 20 MHz Bandwidth

Part Number: AM70S557

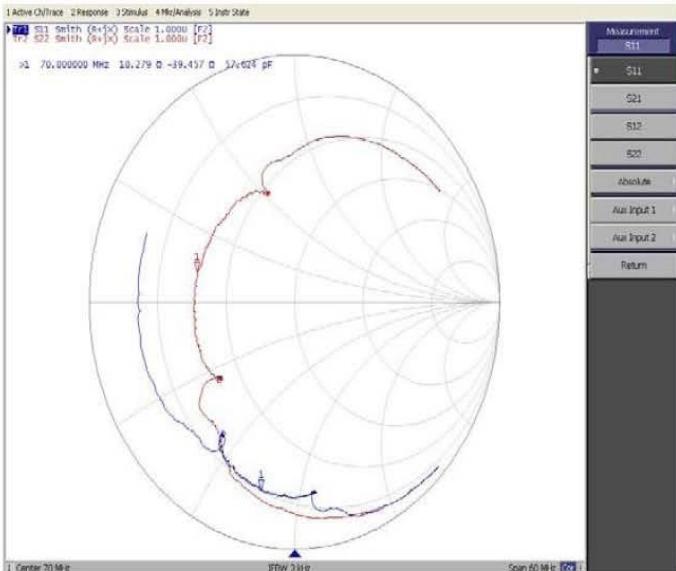


ANATECH ELECTRONICS INC
RF & Microwave Filters & Products

Frequency Response:



Smith Chart



VSWR

