



70 MHz IF Saw Filter 26 MHz Bandwidth



ANATECH ELECTRONICS INC
RF & Microwave Filters & Products

Part Number: AM70S636

Parameters Description	Unit	Minimum	Typical	Maximum
Center Frequency (Fo)	MHz	69.93	70.00	70.07
Insertion Loss at Fo	dB	-	24.2	25.0
Passband Ripple Variation	dB	-	0.7	1.0
Group Delay Variation	nsec	-	42	70
Absolute Delay at Fo	µsec	-	42	70
Temperature Coefficient	ppm/°C	-	-72	-
Bandwidth at -1.0 dB	MHz	25.5	25.65	-
Bandwidth at -3.0 dB	MHz	26.1	26.25	-
Bandwidth at -40.0 dB	MHz	-	28.45	28.70
Ultimate Rejection	dB	50	55	-

Parameters Description	Unit	Minimum	Typical	Maximum
Operation Temperature Range	°C	-30	-	+80
Storage Temperature Range	°C	-40	-	+85
Maximum DC Voltage	V	-	-	10
Maximum Input Power	dBm	-	-	10
Source Impedance (Single Ended) ₁	Ω	-	50	-
Load Impedance (Single Ended) ₁	Ω	-	50	-
Package Size and Type	34.7 x 12.6 x 5.05 mm			F



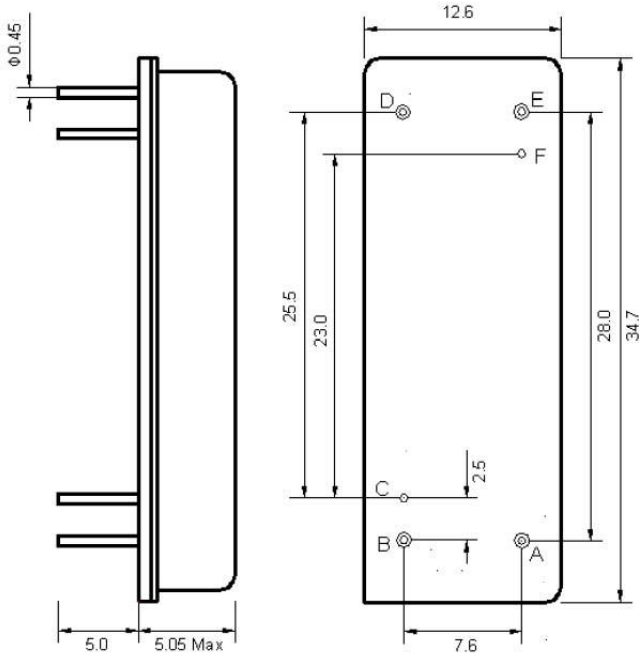
70 MHz IF Saw Filter 26 MHz Bandwidth

Part Number: AM70S636



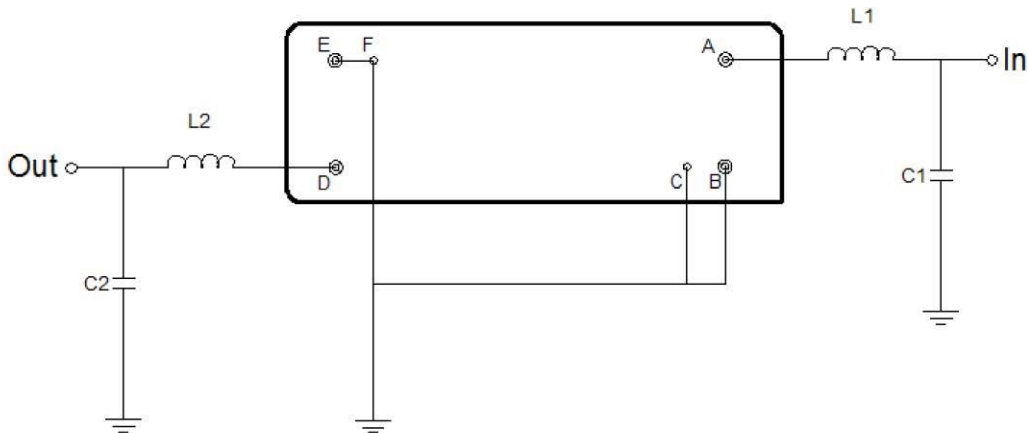
ANATECH ELECTRONICS INC
RF & Microwave Filters & Products

Outline Drawing:



Pin Description	
B C E F	Ground
A	Input
D	Output

Testing Environment:



Test Fixture & Values	
Input	L1 = 220 nH , C1 = 180 pF
Output	L2 = 24 nH , C2 = 36 pF
Source/Load Impedance	50 Ω