



# 70 MHz IF Saw Filter 20 MHz Bandwidth



**ANATECH ELECTRONICS INC**  
RF & Microwave Filters & Products

**Part Number: AM70S638**

Parameters Description	Unit	Minimum	Typical	Maximum
Center Frequency (Fo)	MHz	69.95	70.05	70.15
Insertion Loss at Fo	dB	-	22.5	24.0
Amplitude Ripple Variation at Fo ± 9.75 MHz	dB <sub>p-p</sub>	-	0.6	1.0
Group Delay Variation at Fo ± 9.75 MHz	nsec	-	60	100
Absolute Delay at Fo	µsec	-	2.35	-
Temperature Coefficient	ppm/°C	-	-72	-
Bandwidth at -1.0 dB	MHz	-	20.10	-
Bandwidth at -3.0 dB	MHz	20.30	20.40	-
Bandwidth at -40.0 dB	MHz	-	21.70	21.80
Lower Sidelobe	dB	50	54	-
Upper Sidelobe	dB	50	53	-

Parameters Description	Unit	Minimum	Typical	Maximum
Operation Temperature Range	°C	-30	-	+80
Storage Temperature Range	°C	-40	-	+85
Maximum DC Voltage	V	-	-	10
Maximum Input Power	dBm	-	-	10
Source Impedance (Single Ended) <sub>1</sub>	Ω	-	50	-
Load Impedance (Single Ended) <sub>1</sub>	Ω	-	50	-
Package Size and Type	20.0 x 12.6 x 5.05 mm		D1	



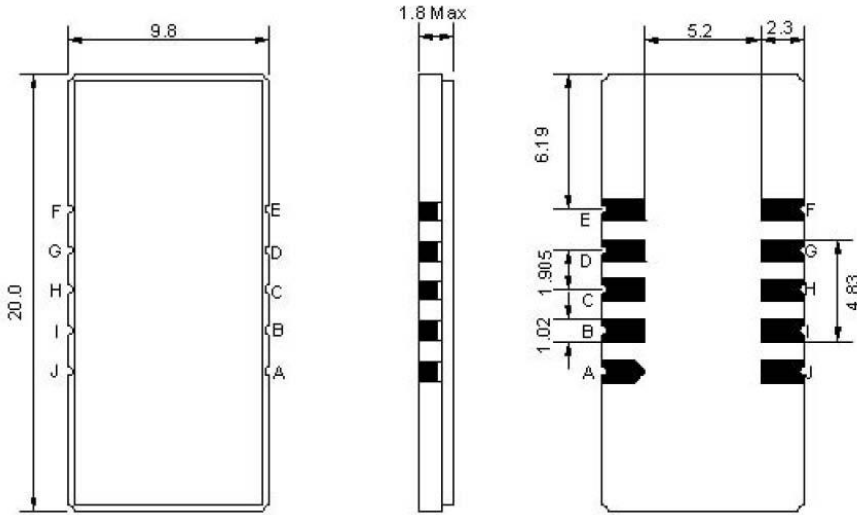
# 70 MHz IF Saw Filter 20 MHz Bandwidth

## Part Number: AM70S638



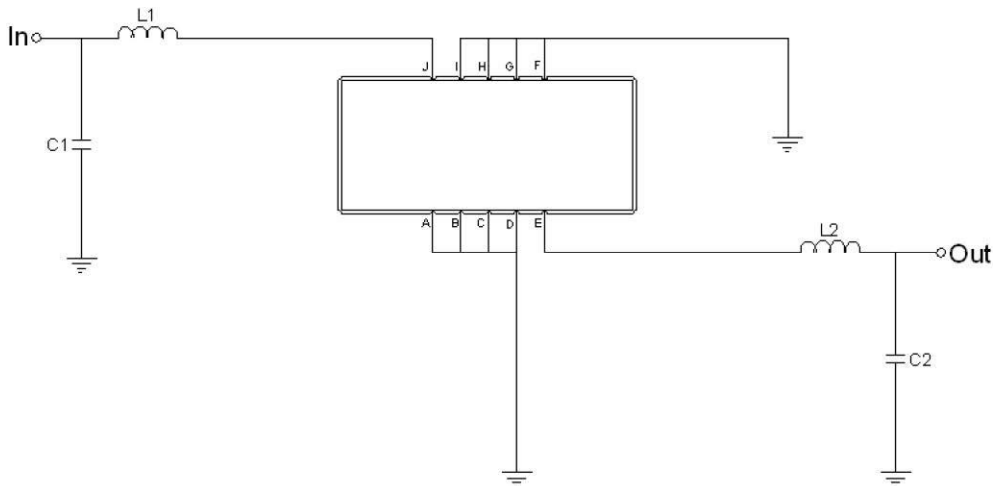
**ANATECH ELECTRONICS INC**  
RF & Microwave Filters & Products

### Outline Drawing:



Pin Description	
A B C D F G H I	Ground
J	Input
E	Output

### Testing Environment:



Test Fixture & Values	
Input	L1=220nH, C1=24pF
Output	L2=180nH, C2=0pF
Source/Load Impedance	50 Ω



### Frequency Response:

