



70 MHz IF Saw Filter 26 MHz Bandwidth



ANATECH ELECTRONICS INC
RF & Microwave Filters & Products

Part Number: AM70S639

Parameters Description	Unit	Minimum	Typical	Maximum
Center Frequency (Fo)	MHz	69.92	70.00	70.08
Insertion Loss at Fo	dB	-	25.2	26.5
Amplitude Ripple Variation at Fo ± 12.49 MHz	dB _{p-p}	-	0.70	1.0
Group Delay Variation at Fo ± 12.49 MHz	nsec	-	35	100
Absolute Delay at Fo	µsec	-	2.0	-
Temperature Coefficient	ppm/°C	--	-72	-
Bandwidth at -1.0 dB	MHz	-	26.3	-
Bandwidth at -3.0 dB	MHz	26.6	26.7	-
Bandwidth at -40.0 dB	MHz	-	28.3	28.8
Lower Sidelobe	dB	50	-	-
Upper Sidelobe	dB	50	-	-

Parameters Description	Unit	Minimum	Typical	Maximum
Operation Temperature Range	°C	-30	-	+80
Storage Temperature Range	°C	-40	-	+85
Maximum DC Voltage	V	-	-	10
Maximum Input Power	dBm	-	-	10
Source Impedance (Single Ended) ₁	Ω	-	50	-
Load Impedance (Single Ended) ₁	Ω	-	50	-
Package Size and Type	20.0 x 12.6 x 5.05 mm		D1	



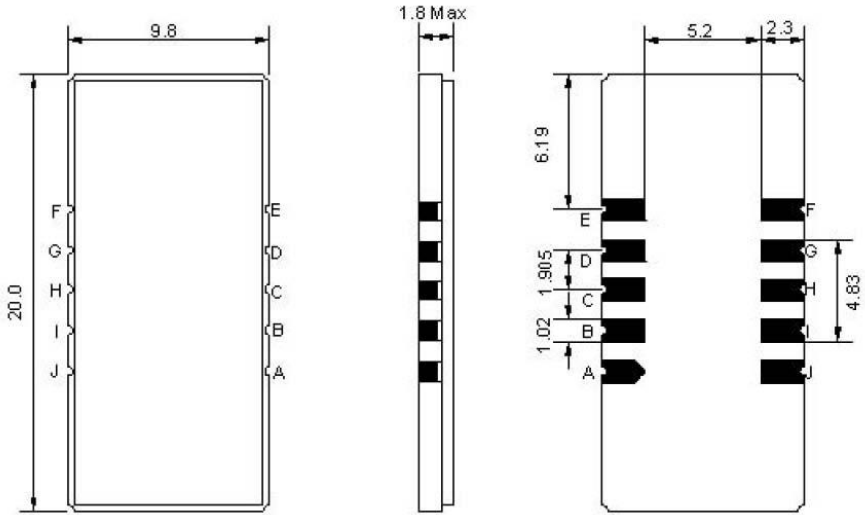
70 MHz IF Saw Filter 26 MHz Bandwidth

Part Number: AM70S639



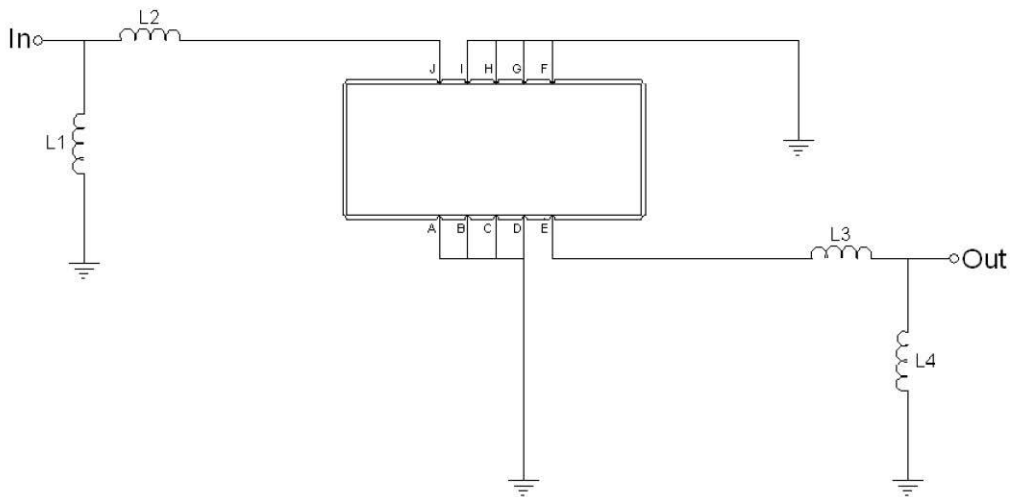
ANATECH ELECTRONICS INC
RF & Microwave Filters & Products

Outline Drawing:



Pin Description	
A B C D F G H I	Ground
J	Input
E	Output

Testing Environment:



Test Fixture & Values	
Input	L1= 680 nH, L2= 270 nH
Output	L3= 150 nH, L4= 680 nH
Source/Load Impedance	50 Ω



70 MHz IF Saw Filter 26 MHz Bandwidth

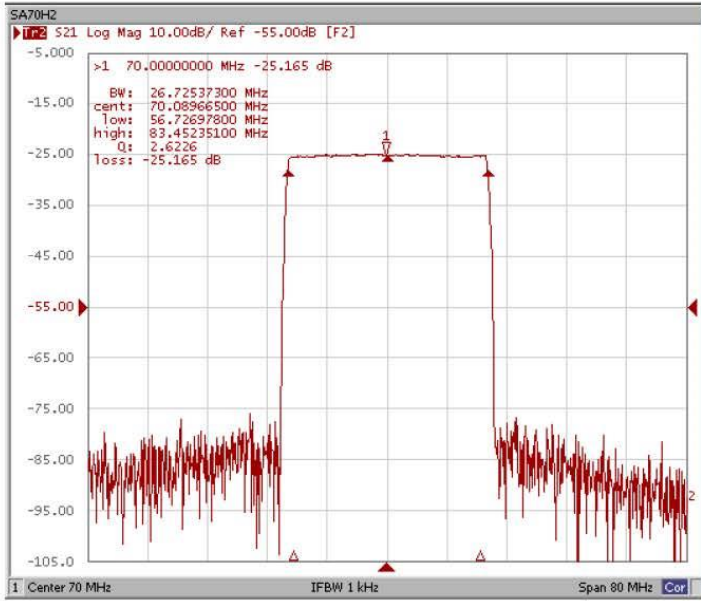
Part Number: AM70S639



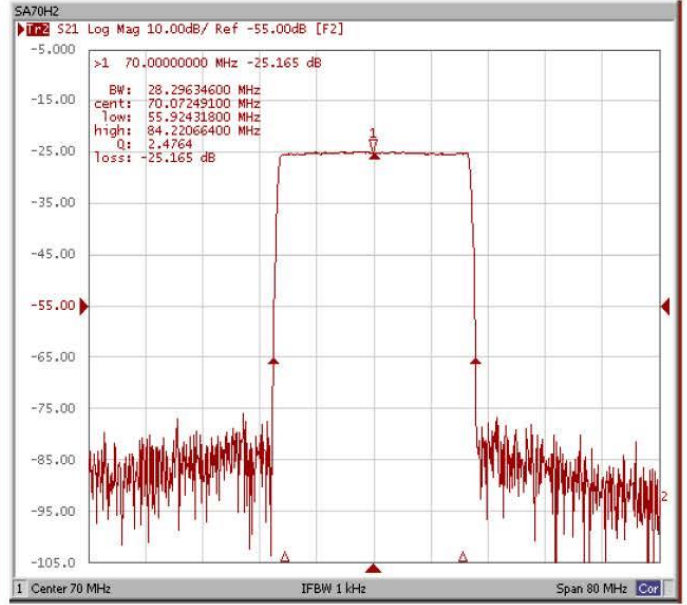
ANATECH ELECTRONICS INC
RF & Microwave Filters & Products

Frequency Response:

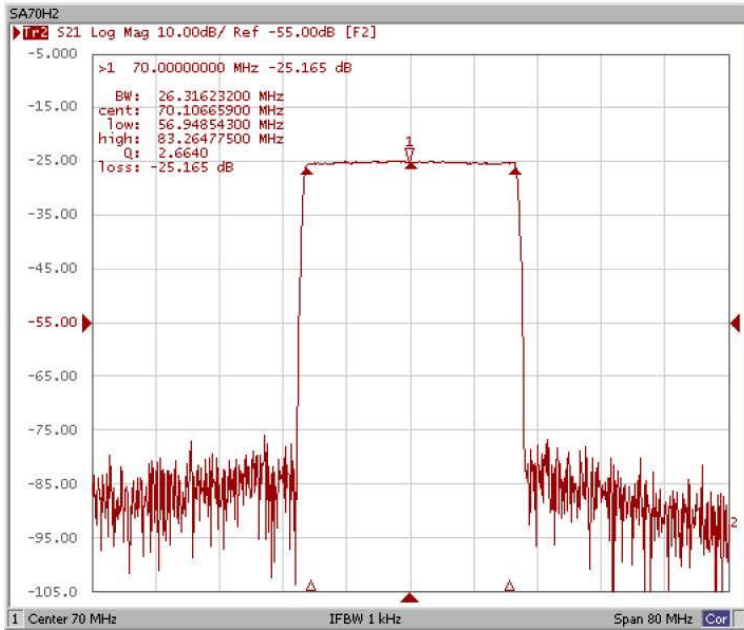
Bandwidth at -3.0 dB



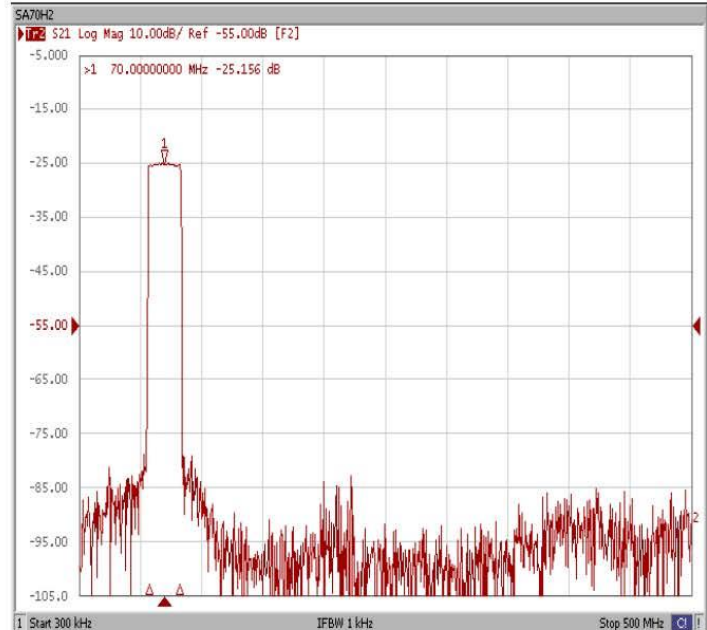
Bandwidth at -40.0 dB



Bandwidth at -1.0 dB



Wide Band





70 MHz IF Saw Filter 26 MHz Bandwidth

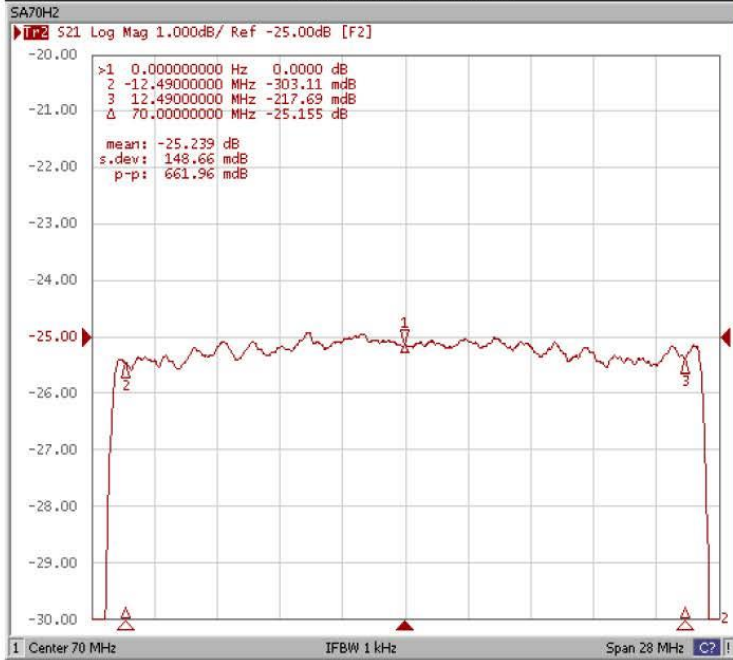


ANATECH ELECTRONICS INC
RF & Microwave Filters & Products

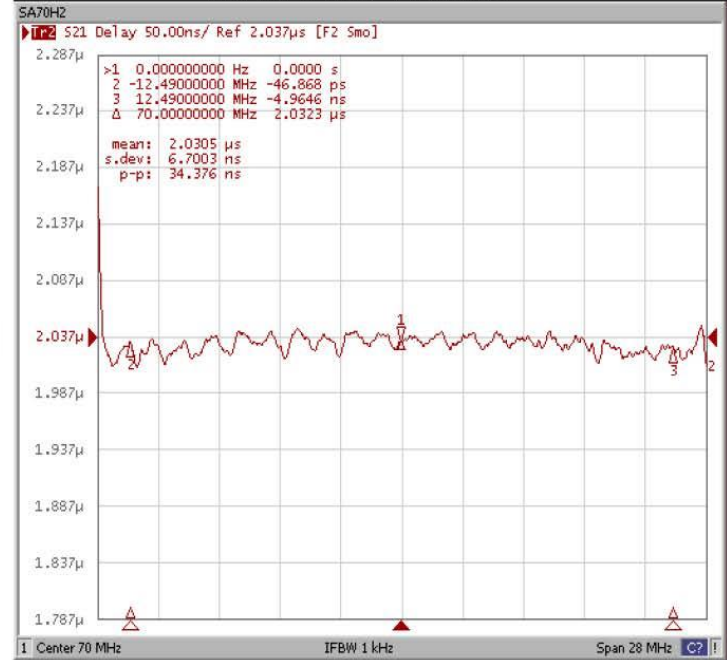
Part Number: AM70S639

Frequency Response:

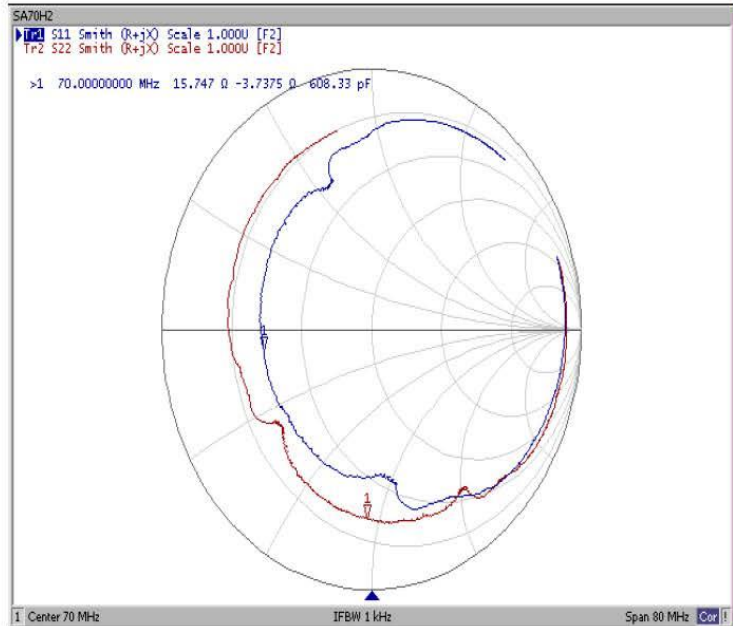
Ripple Variation



Group Delay Variation



Smith Chart



VSWR

