



70 MHz IF Saw Filter 19 MHz Bandwidth



ANATECH ELECTRONICS INC
RF & Microwave Filters & Products

Part Number: AM70S642

Parameters Description	Unit	Minimum	Typical	Maximum
Center Frequency (Fo)	MHz	-	70.0	-
Insertion Loss at Fo	dB	-	22.5	24.0
Amplitude Ripple Variation at Fo ± 9.22 MHz	dB _{p-p}	-	0.7	1.0
Group Delay Variation at Fo ± 9.22 MHz	nsec	-	50	100
Absolute Delay at Fo	µsec	-	2.42	-
Temperature Coefficient	ppm/°C	-	-72	-
Bandwidth at -1.0 dB	MHz	-	19.15	-
Bandwidth at -3.0 dB	MHz	19.2	19.47	-
Bandwidth at -50.0 dB	MHz	-	20.92	21.0
Relative Attenuation:				
Lower Sidelobe	dB	50	55	-
Upper Sidelobe	dB	50	55	-

Parameters Description	Unit	Minimum	Typical	Maximum
Operation Temperature Range	°C	-30	-	+80
Storage Temperature Range	°C	-40	-	+85
Maximum DC Voltage	V	-	-	10
Maximum Input Power	dBm	-	-	10
Source Impedance (Single Ended) ₁	Ω	-	50	-
Load Impedance (Single Ended) ₁	Ω	-	50	-
Package Size and Type	20.0 x 12.6 x 5.05 mm D			



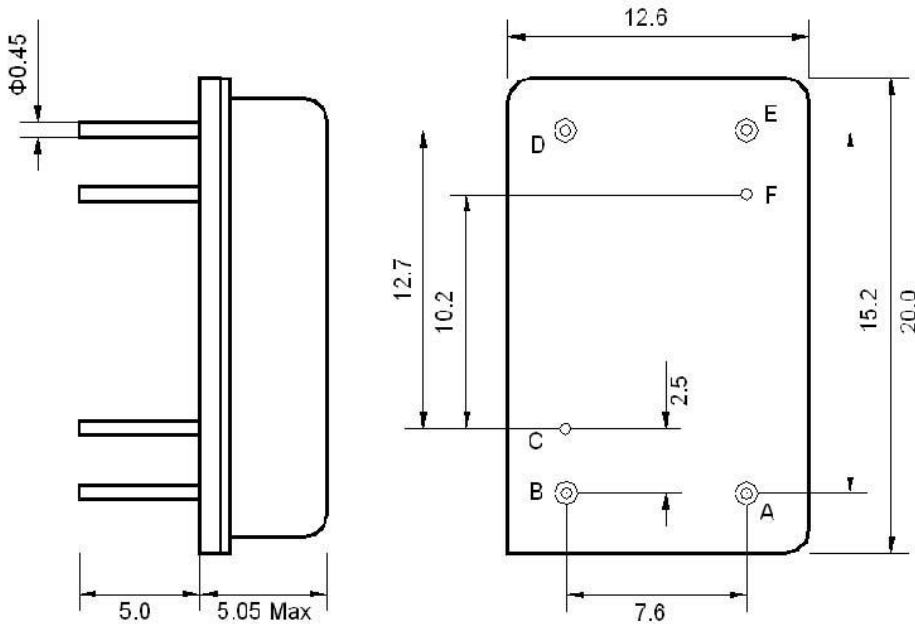
70 MHz IF Saw Filter 19 MHz Bandwidth

Part Number: AM70S642



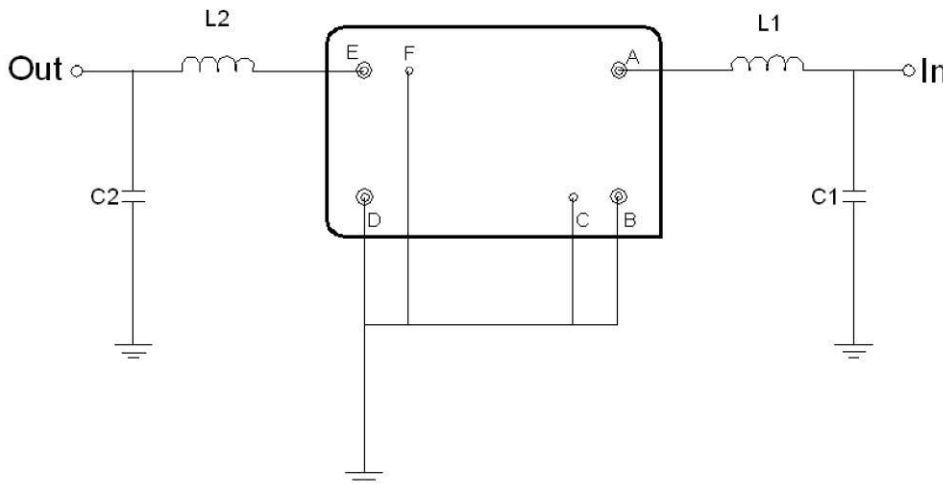
ANATECH ELECTRONICS INC
RF & Microwave Filters & Products

Outline Drawing:



Pin Description	
B C E F	Ground
A	Input
D	Output

Testing Environment:



Test Fixture & Values	
Input	L1 = 150 Nh, C1 = 15pF
Output	L2 = 180 nH, C2 = 15pF
Source/Load Impedance	50 Ω



Frequency Response:

