



70 MHz IF Saw Filter 20 MHz Bandwidth

Part Number: AM70S646

ANATECH ELECTRONICS INC
RF & Microwave Filters & Products



Parameters Description	Unit	Minimum	Typical	Maximum
Center Frequency (Fo)	MHz	69.92	70.0	70.08
Insertion Loss at Fo	dB	-	23.5	26.0
Passband Ripple Variation	dB	-	0.6	1.0
Group Delay Variation	nsec	-	70	150
Absolute Delay at Fo	µsec	-	2.83	-
Temperature Coefficient	ppm/°C	-	-72	-
Bandwidth at -1.0 dB	MHz	20.35	20.47	-
Bandwidth at -3.0 dB	MHz	20.55	20.75	-
Bandwidth at -40.0 dB	MHz	-	-	22.0
Ultimate Rejection	dB	55	60	-

Parameters Description	Unit	Minimum	Typical	Maximum
Operation Temperature Range	°C	-30	-	+80
Storage Temperature Range	°C	-40	-	+85
Maximum DC Voltage	V	-	-	10
Maximum Input Power	dBm	-	-	10
Source Impedance (Single Ended) ₁	Ω	-	50	-
Load Impedance (Single Ended) ₁	Ω	-	50	-
Package Size and Type	34.7 x 12.6 x 5.05 mm			F



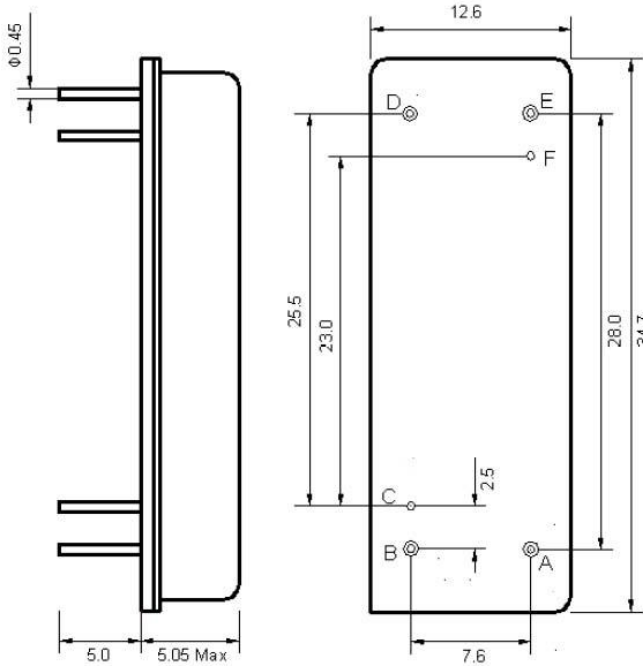
70 MHz IF Saw Filter 20 MHz Bandwidth

Part Number: AM70S646



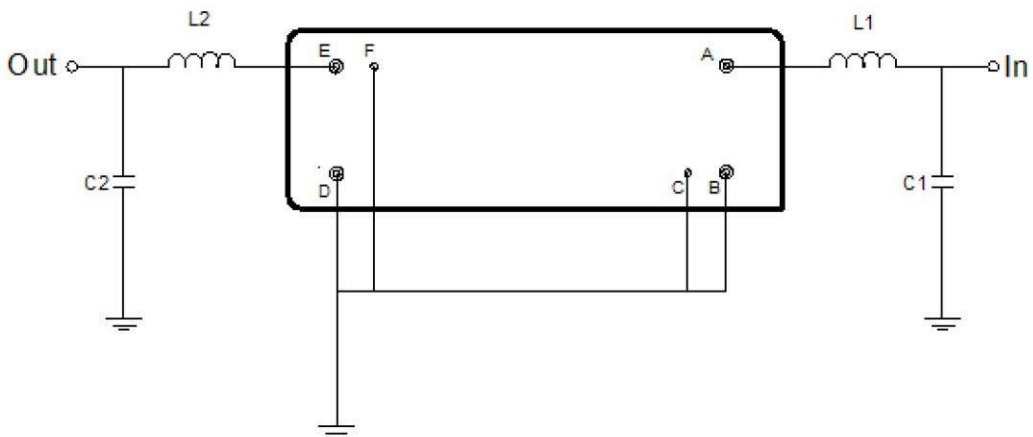
ANATECH ELECTRONICS INC
RF & Microwave Filters & Products

Outline Drawing:



Pin Description	
B C E F	Ground
A	Input
D	Output

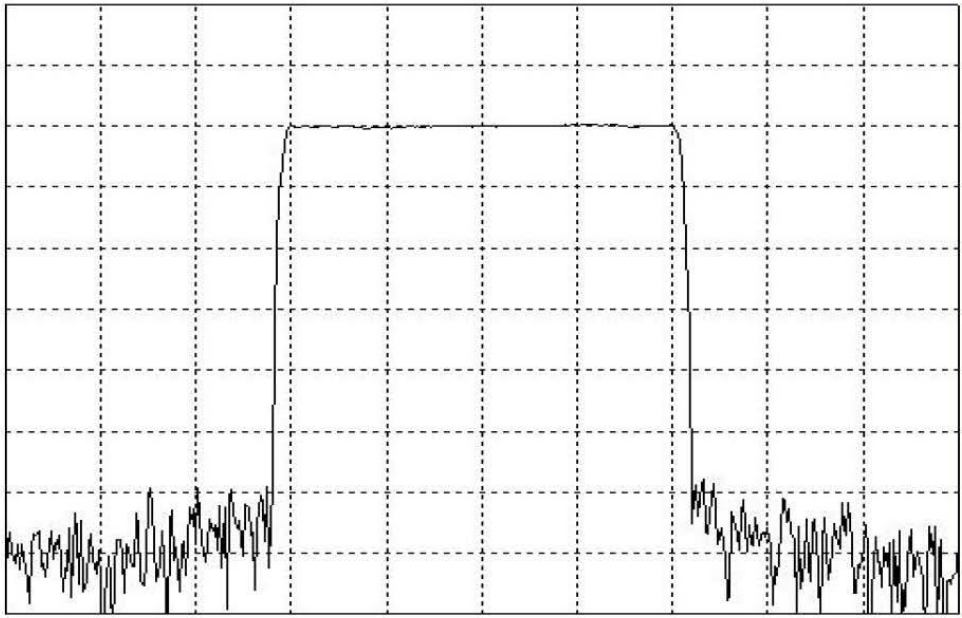
Testing Environment:



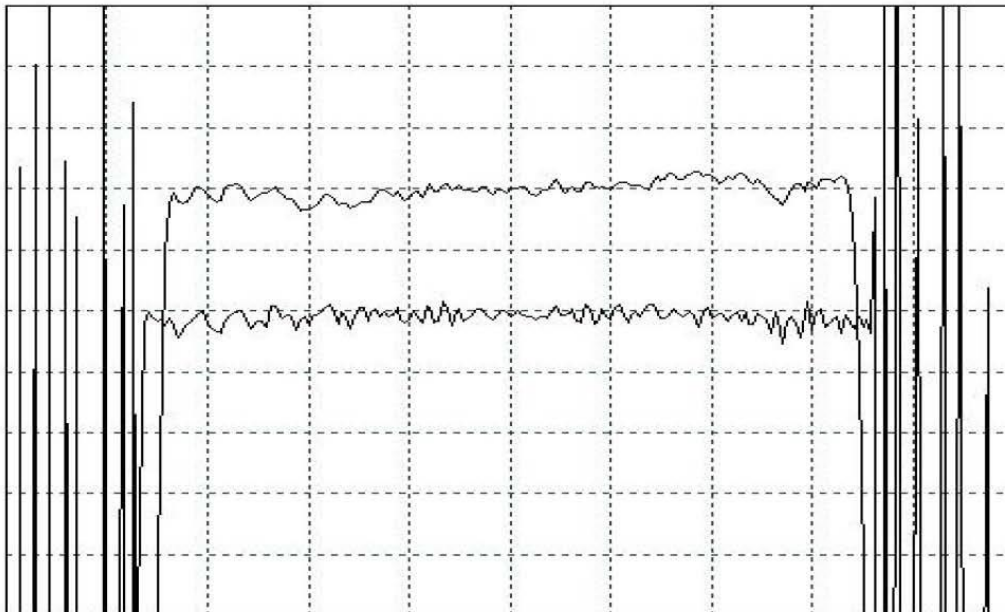
Test Fixture & Values	
Input	L1 = (150+8.2) nH , C1 = 33 pF
Output	L2 = (82+82) nH , C2 = 27 pF
Source/Load Impedance	50 Ω



Frequency Response:



Horizontal : 5.0 MHz/Div
Vertical : 10 dB/Div



Horizontal : 3.0 MHz/Div
Vertical : 1 dB/Div
vertical : 100 ns/Div