



# 70 MHz IF Saw Filter 1 MHz Bandwidth

## Part Number: AM70S647



**ANATECH ELECTRONICS INC**  
RF & Microwave Filters & Products

Parameters Description	Unit	Minimum	Typical	Maximum
Center Frequency (Fo)	MHz	69.95	70.0	70.05
Insertion Loss at Fo	dB	-	20.0	22.0
Absolute Delay at Fo	µsec	-	2.6	-
Phase Linearity	orms	-	1.54	2.00
Amplitude Ripple Variation at Fo ± 0.5 MHz	dB	-	0.8	1.0
Temperature Coefficient	ppm/°C	-	-0.03	-
Bandwidth at -1.0 dB	MHz	1.26	1.30	-
Bandwidth at -40.0 dB	MHz	-	2.36	-
<b>Relative Attenuation:</b>				
at Fo ± 1.25 MHz	dB	40	45	-
at Fo ± 1.7 MHz	dB	40	45	-
Ultimate Rejection	dB	40	50	-

Parameters Description	Unit	Minimum	Typical	Maximum
Operation Temperature Range	°C	-30	-	+80
Storage Temperature Range	°C	-40	-	+85
Maximum DC Voltage	V	-	-	10
Maximum Input Power	dBm	-	-	10
Source Impedance (Single Ended) <sub>1</sub>	Ω	-	50	-
Load Impedance (Single Ended) <sub>1</sub>	Ω	-	50	-
Package Size and Type	19.0 x 6.5 x 1.8 mm		X	



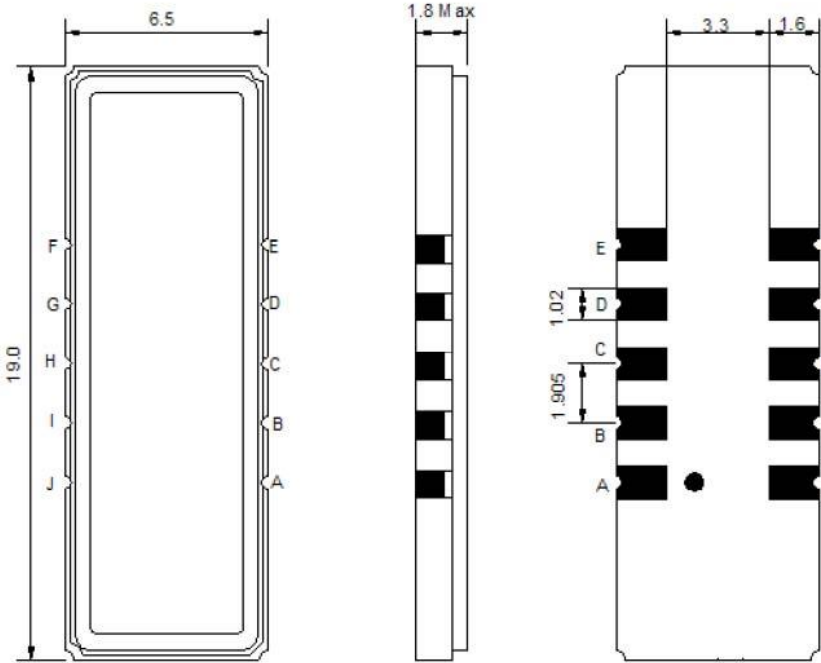
# 70 MHz IF Saw Filter 1 MHz Bandwidth

## Part Number: AM70S647



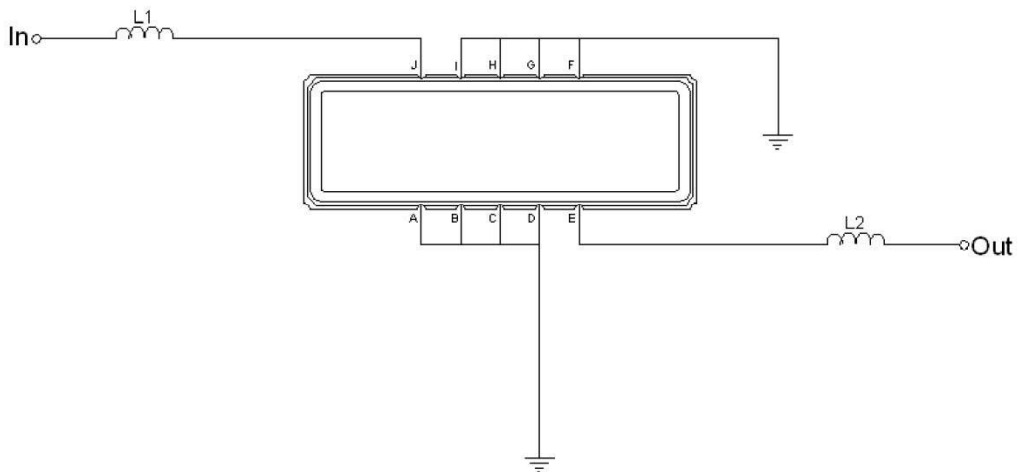
**ANATECH ELECTRONICS INC**  
RF & Microwave Filters & Products

### Outline Drawing:



Pin Description	
A B C D F G H I	Ground
J	Input
E	Output

### Testing Environment:



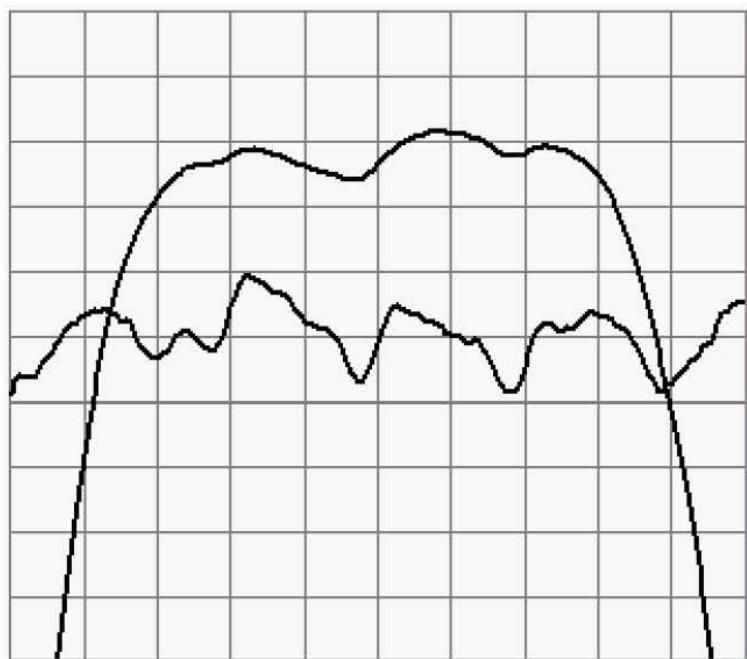
Test Fixture & Values	
Input	L1 = 470 nH
Output	L2 = 470 nH
Source/Load Impedance	50 Ω



### Frequency Response:



Horizontal : 0.5 MHz/Div  
Vertical : 10 dB/Div



Horizontal : 0.2MHz/Div  
Vertical : 1 dB/Div  
Vertical : 100 ns/Div