



ANATECH ELECTRONICS INC
RF & Microwave Filters & Products

70 MHz IF Saw Filter

Part Number: AM70S650

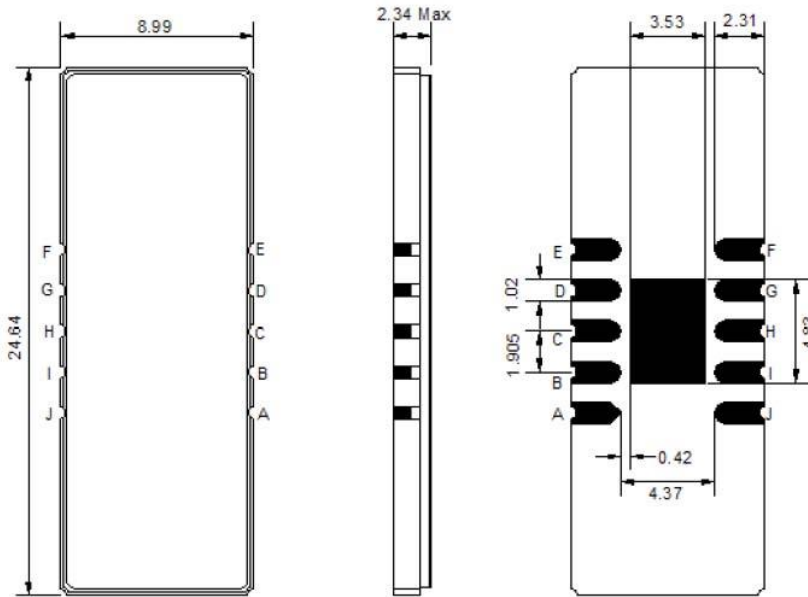


Parameters Description	Unit	Minimum	Typical	Maximum
Center Frequency (Fo)	MHz	-	70.00	-
Insertion Loss at Fo	dB	-	8.5	12.0
Amplitude Ripple Variation at Fo ± 50.0 kHz	dBp-p	-	0.4	1.0
Absolute Delay at Fo	µsec	-	3.22	-
In/Out Return Loss at Fo	dB	-	-	-
Temperature Coefficient	ppm/°C	-	-0.03	-
Bandwidth at -3.0 dB	MHz	0.25	0.33	-
Bandwidth at -50.0 dB	MHz	-	0.98	1.1
Relative Attenuation:				
10.0 ~ 69.2 MHz	dB	50	57	-
70.8 ~ 110.0 MHz	dB	50	57	-

Parameters Description	Unit	Minimum	Typical	Maximum
Operation Temperature Range	°C	-30	-	+80
Storage Temperature Range	°C	-40	-	+85
Maximum DC Voltage	V	-	-	10
Maximum Input Power	dBm	-	-	10
Source Impedance (Single Ended) ₁	Ω	-	50	-
Load Impedance (Single Ended) ₁	Ω	-	50	-
Package Size and Type	24.7 x 9.0 x 2.34 mm			Y

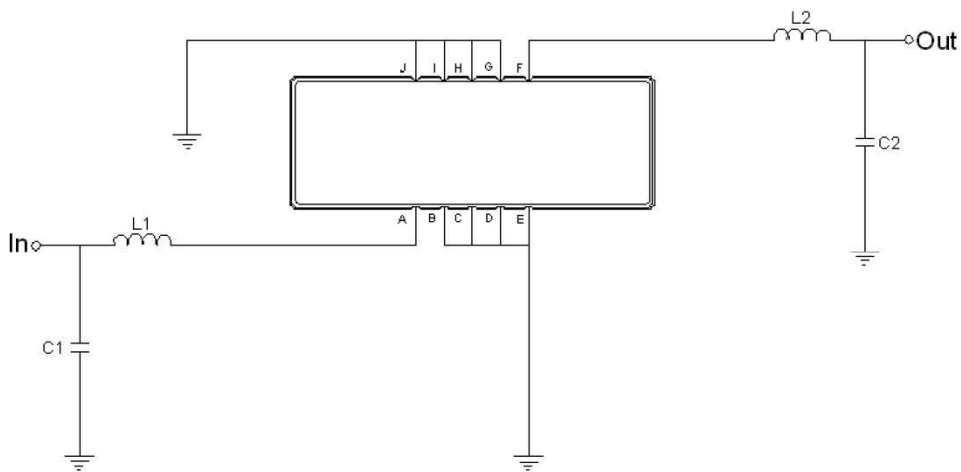


Outline Drawing:



Pin Description	
B C D E G H I J	Ground
A	Input
F	Output

Testing Environment:



Test Fixture & Values	
Input	L1=200nH Q >40 , C1=100pF
Output	L2=180nH Q >40 , C2=51pF
Source/Load Impedance	50 Ω



70 MHz IF Saw Filter

Part Number: AM70S650



Frequency Response:

