



70 MHz IF Saw Filter

Part Number: AM70S651

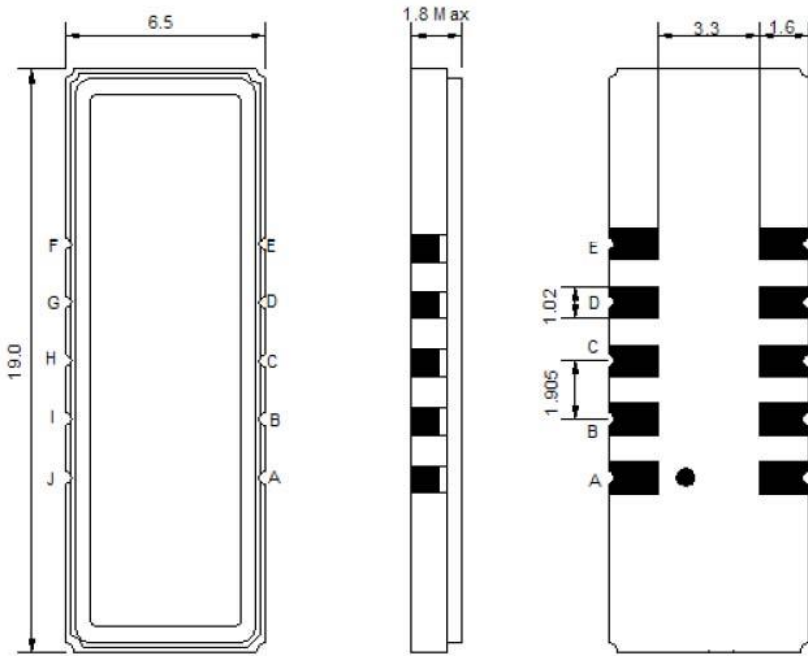


Parameters Description	Unit	Minimum	Typical	Maximum
Center Frequency (Fo)	MHz	69.95	70.00	70.05
Insertion Loss at Fo	dB	-	18.2	20.0
Group Delay Variation	nsec	-	194	220
Amplitude Ripple Variation	dBp-p	-	0.5	0.8
Absolute Delay at Fo	µsec	-	2.04	-
Phase Linearity at Fo ± 0.5 MHz	degc	-	3.9	6.0
Temperature Coefficient	ppm/°C	-	-0.03	-
Bandwidth at -1.0 dB	MHz	0.95	1.10	-
Bandwidth at -3.0 dB	MHz	1.10	1.30	-
Bandwidth at -35.0 dB	MHz	-	2.05	2.20
Ultimate Rejection	dB	40	45	-

Parameters Description	Unit	Minimum	Typical	Maximum
Operation Temperature Range	°C	-30	-	+80
Storage Temperature Range	°C	-40	-	+85
Maximum DC Voltage	V	-	-	10
Maximum Input Power	dBm	-	-	10
Source Impedance (Single Ended) ₁	Ω	-	50	-
Load Impedance (Single Ended) ₁	Ω	-	50	-
Package Size and Type	19.0 x 6.5 x 1.8 mm		X	

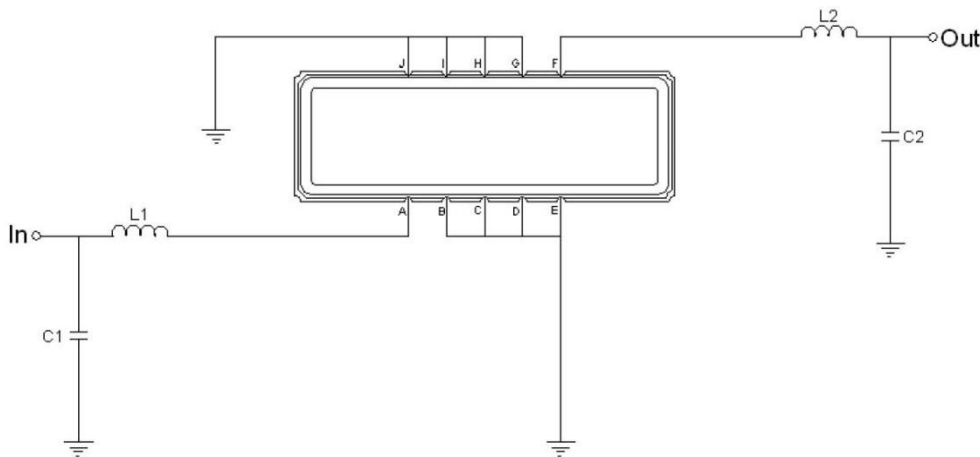


Outline Drawing:



Pin Description	
B C D E G H I J	Ground
A	Input
F	Output

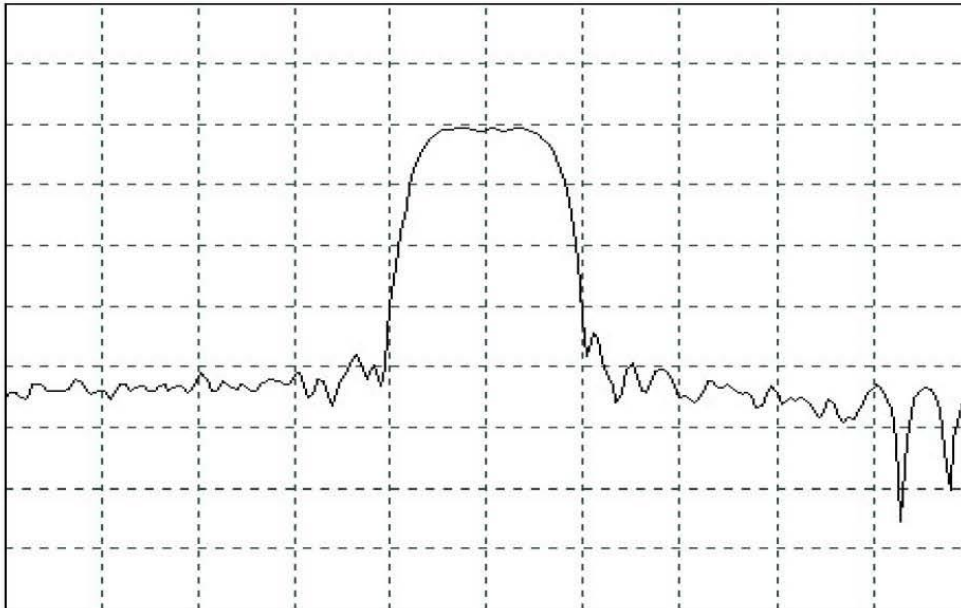
Testing Environment:



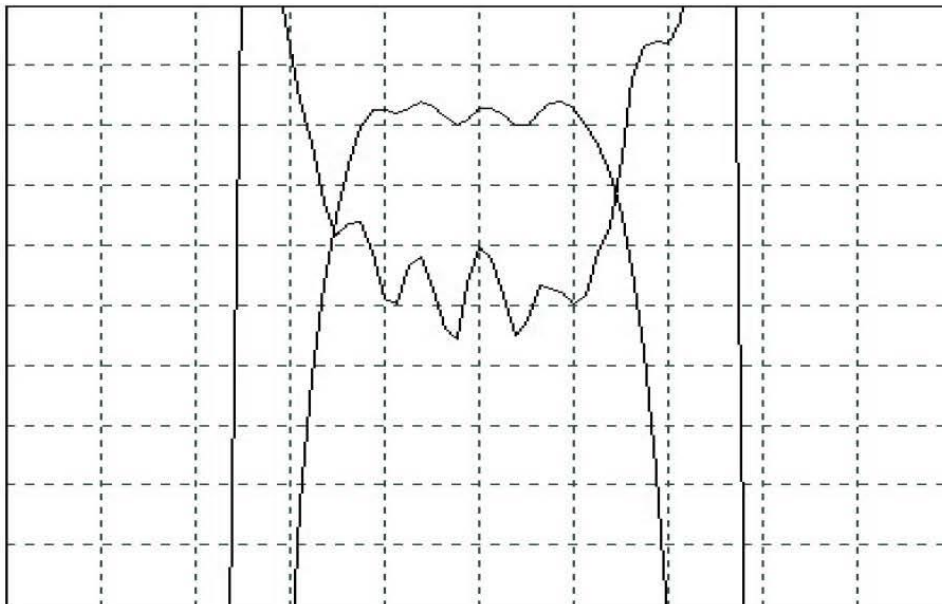
Test Fixture & Values	
Input	L1 = 462 nH , C1 = 47 pF
Output	L2 = 348 nH , C2 = 56 pF
Source/Load Impedance	50 Ω



Frequency Response:



Horizontal : 1.0 MHz/Div
Vertical : 10 dB/Div



Horizontal : 0.4MHz/Div
Vertical : 1 dB/Div
Vertical : 100 ns/Div