



70 MHz IF Saw Filter

Part Number: AM70S661



Parameters Description	Unit	Minimum	Typical	Maximum
Center Frequency (Fo)	MHz	-	70.0	-
Insertion Loss at Fo	dB	-	13.9	15.0
Amplitude Ripple Variation at Fo ± 9.75 MHz	dB _{p-p}	-	0.35	0.6
Group Delay Variation at Fo ± 9.75 MHz	nsec	-	28	45
Absolute Delay at Fo	µsec	-	0.68	-
Temperature Coefficient	ppm/°C	-	-86	-
Bandwidth at -1.0 dB	MHz	20.8	21.3	-
Bandwidth at -25.0 dB	MHz	-	27.7	28.5
Bandwidth at -40.0 dB	MHz	-	29.7	-
Relative Attenuation:				
Lower Sidelobe	dB	40	45	-
Upper Sidelobe	dB	38	42	-

Parameters Description	Unit	Minimum	Typical	Maximum
Operation Temperature Range	°C	-	+25	-
Storage Temperature Range	°C	-40	-	+85
Maximum DC Voltage	V	-	-	10
Maximum Input Power	dBm	-	-	10
Source Impedance (Single Ended) ₁	Ω	-	50	-
Load Impedance (Single Ended) ₁	Ω	-	50	-
Package Size and Type	13.3 x 6.5 x 1.8 mm		V	

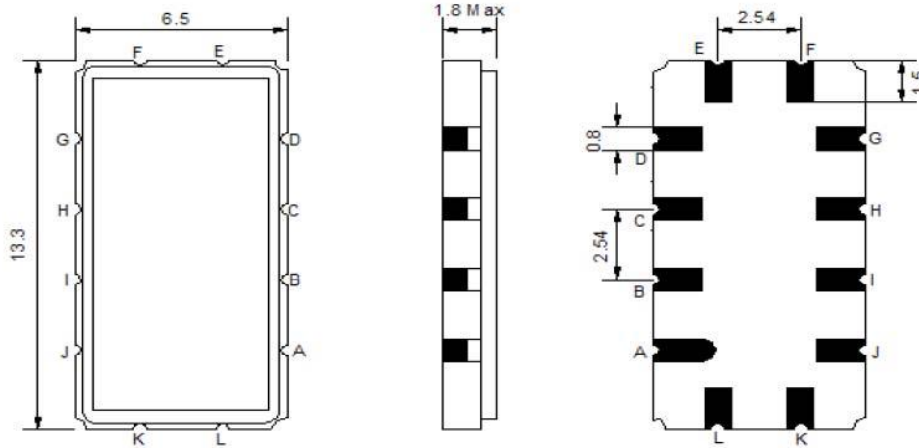


70 MHz IF Saw Filter

Part Number: AM70S661

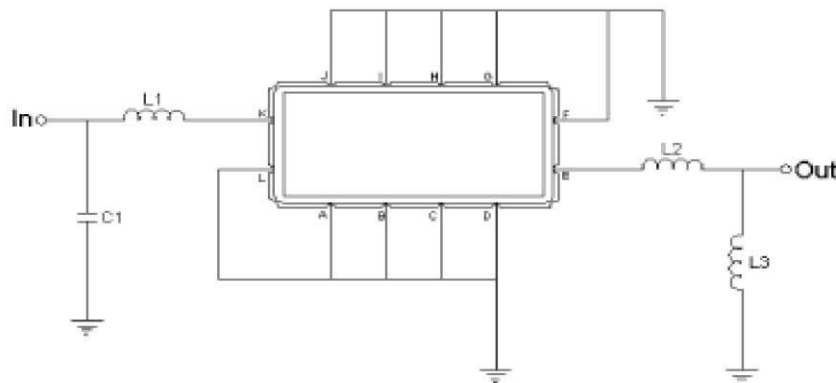


Outline Drawing:



Pin Description	
B C E F	Ground
A	Input
D	Output

Testing Environment:

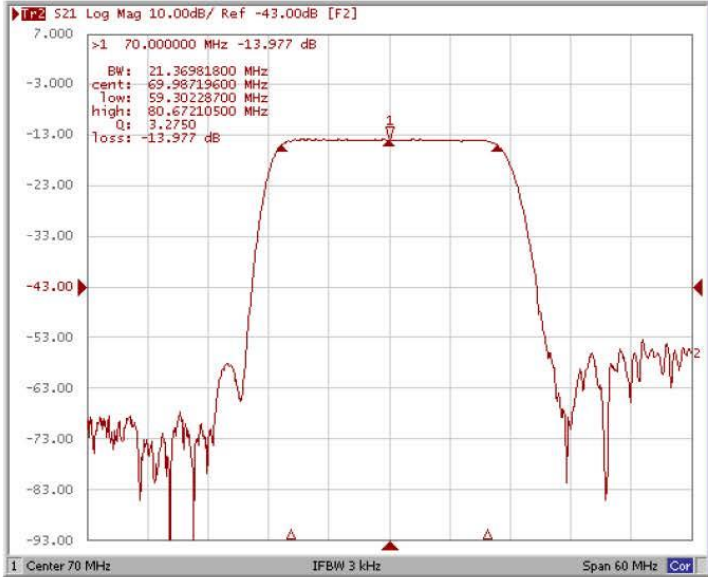


Test Fixture & Values	
Input	L1=150 nH, C1=20pF Q>35
Output	L2=100 nH, L3=270nH Q>35
Source/Load Impedance	50 Ω

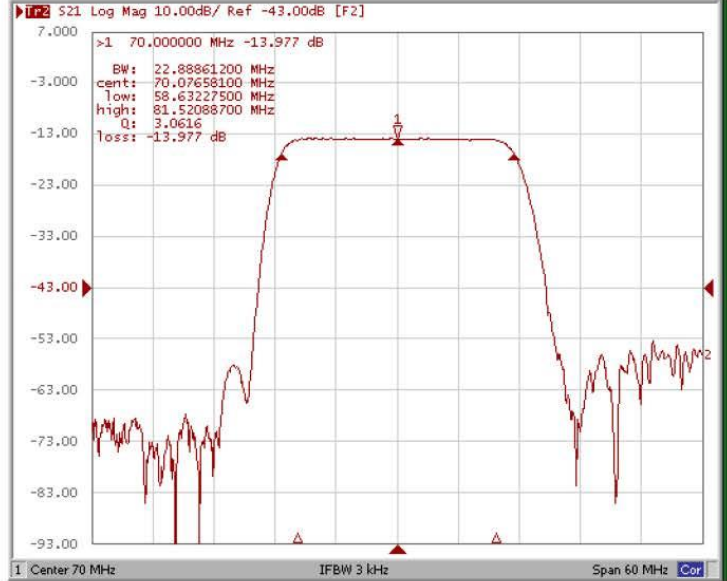


Frequency Response:

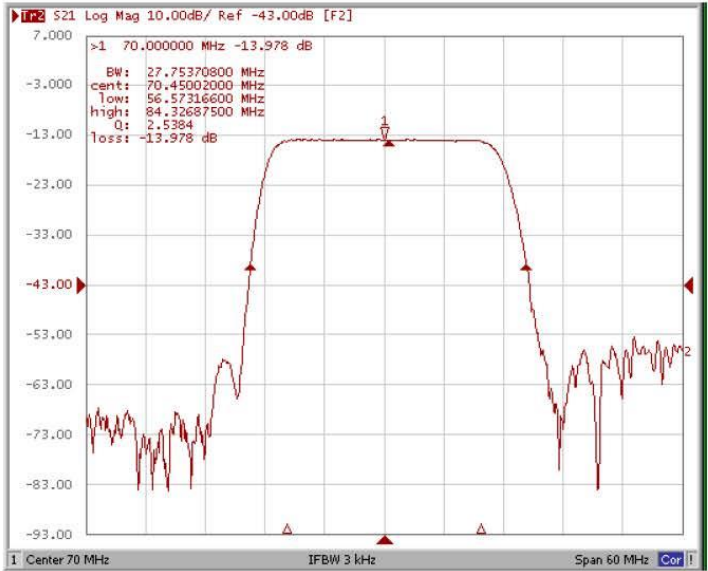
Bandwidth at -1.0 dB



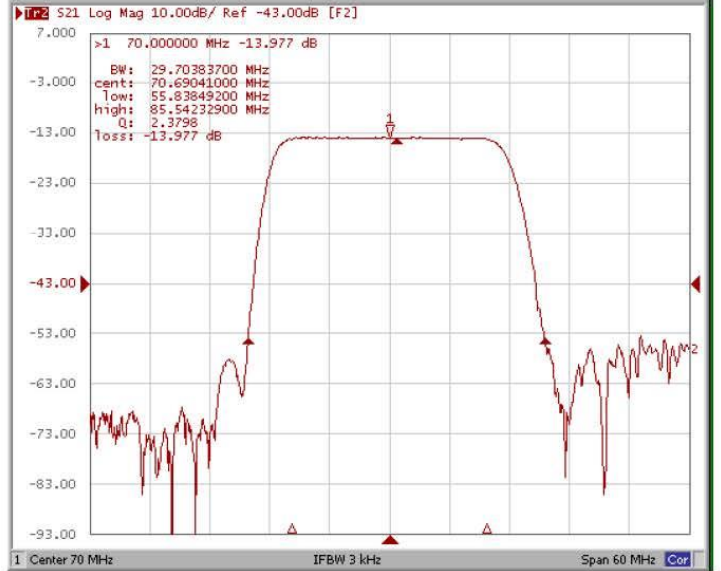
Bandwidth at -3.0 dB



Bandwidth at -25.0 dB



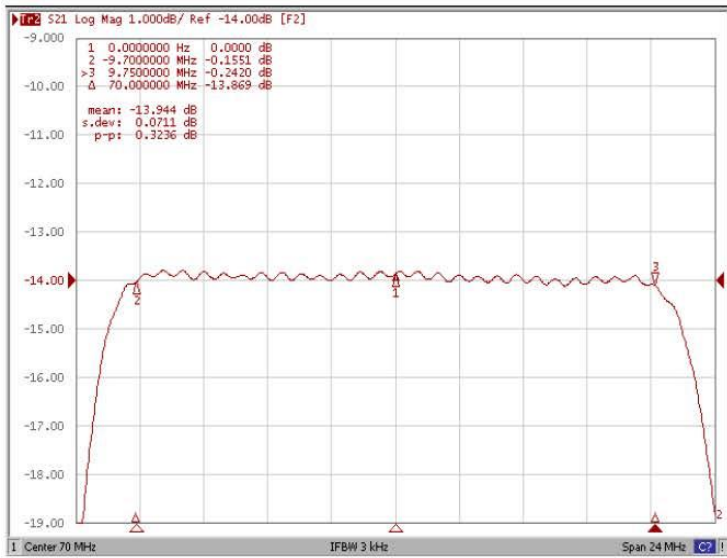
Bandwidth at -40.0 dB



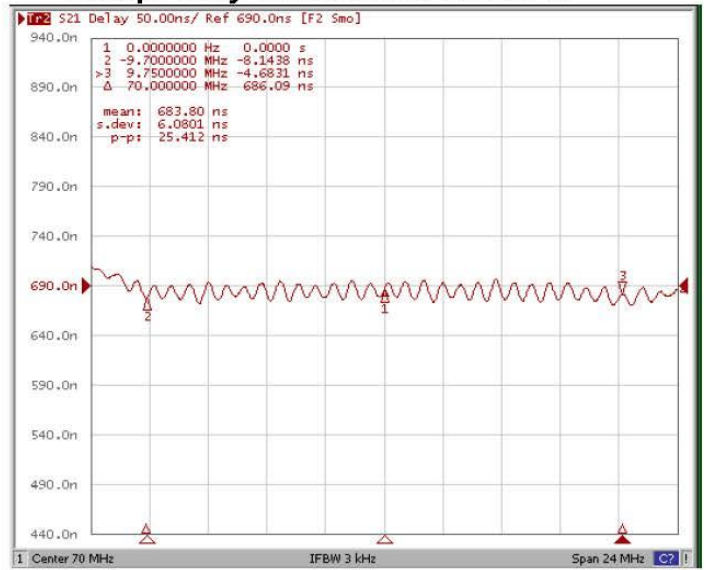


Frequency Response:

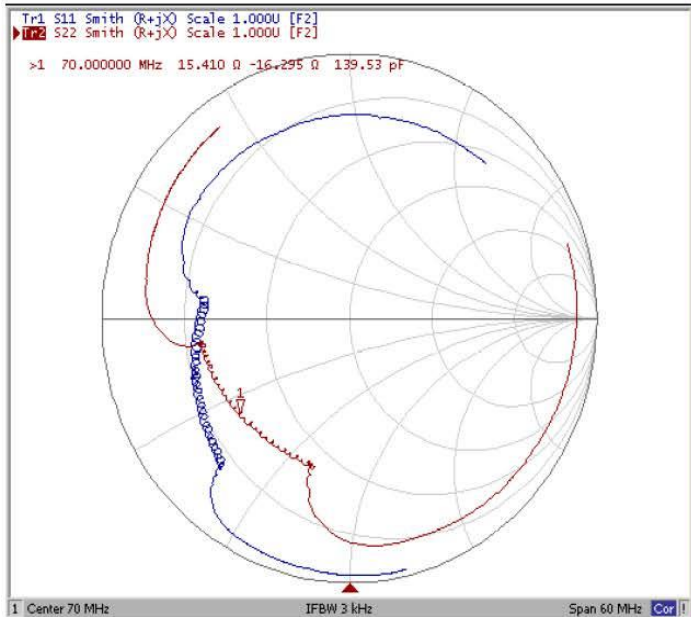
Ripple Variation Fo±9.75MHz



Group Delay Variation Fo±9.75MHz



Smith Chart



SWR

