



# 70 MHz IF Saw Filter

## Part Number: AM70S662



Parameters Description	Unit	Minimum	Typical	Maximum
Center Frequency (Fo)	MHz	69.90	70.00	70.10
Insertion Loss at Fo	dB	-	18.75	20.0
Passband Ripple at Fo ± 9.65 MHz	dB	-	0.80	1.00
Group Delay Variation at Fo ± 9.65 MHz	nsec	-	70	150
Absolute Delay at Fo	µsec	-	1.64	-
Temperature Coefficient	ppm/°C	-	-86	-
Bandwidth at -1.0 dB	MHz	19.80	20.05	-
Bandwidth at -3.0 dB	MHz	-	20.50	-
Bandwidth at -20.0 dB	MHz	-	21.75	-
Bandwidth at -40.0 dB	MHz	-	22.70	22.95
Ultimate Rejection	dB	-	48	-

Parameters Description	Unit	Minimum	Typical	Maximum
Operation Temperature Range	°C	0	-	+60
Storage Temperature Range	°C	-30	-	+80
Maximum DC Voltage	V	-	-	10
Maximum Input Power	dBm	-	-	10
Source Impedance (Single Ended) <sub>1</sub>	Ω	-	50	-
Load Impedance (Single Ended) <sub>1</sub>	Ω	-	50	-
Package Size and Type	20.0 x 9.8 x 1.8 mm		D1	

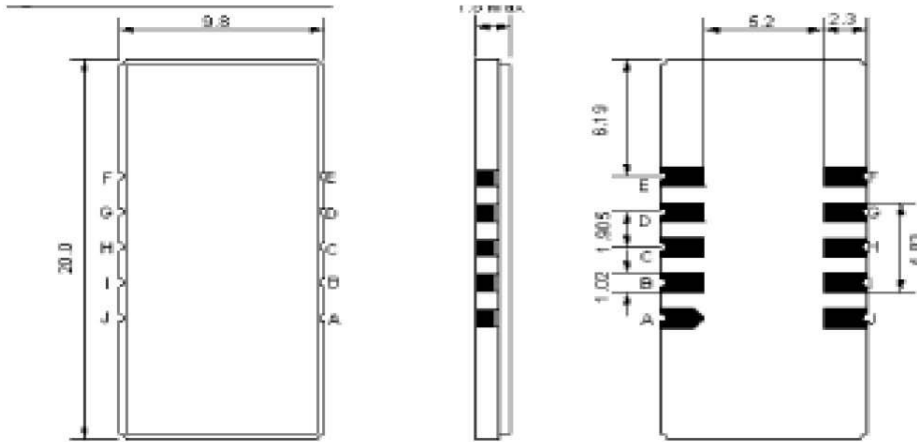


# 70 MHz IF Saw Filter

## Part Number: AM70S662

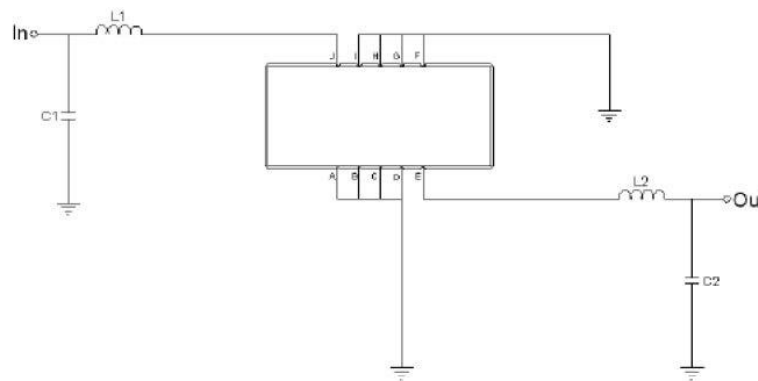


### Outline Drawing:



Pin Description	
A B C D F G H I	Ground
J	Input
E	Output

### Testing Environment:

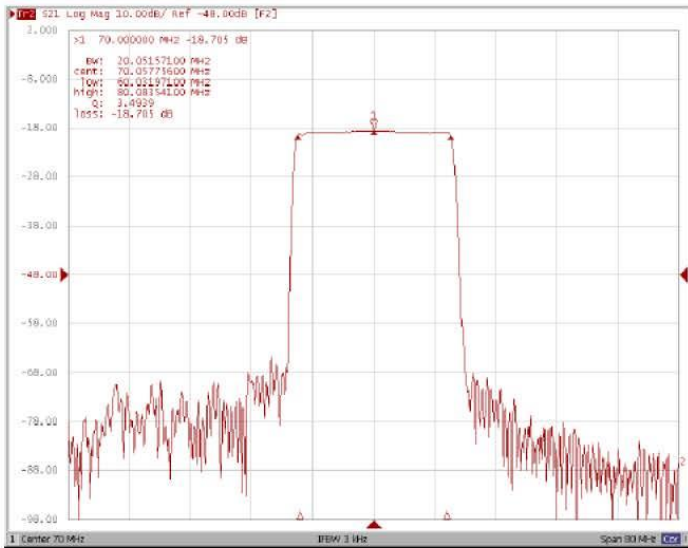


Test Fixture & Values	
Input	L1=68nH, C1=91pF
Output	L2=82nH, C2=75pF
Source/Load Impedance	50 Ω

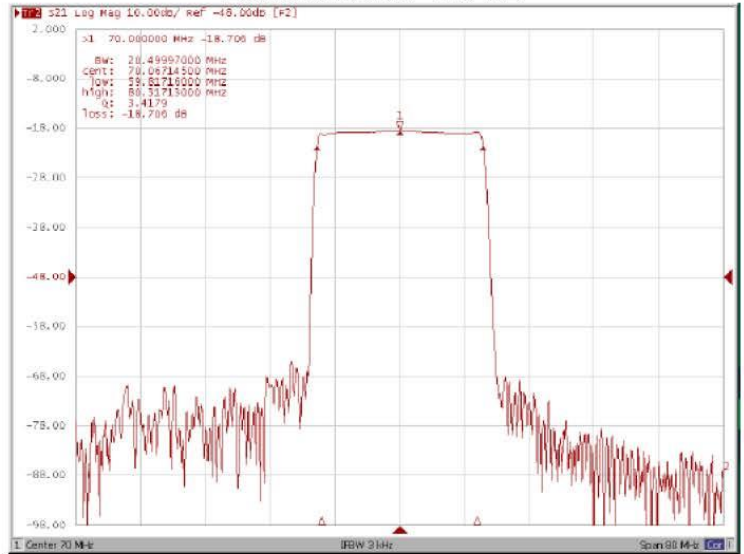


**Frequency Response:**

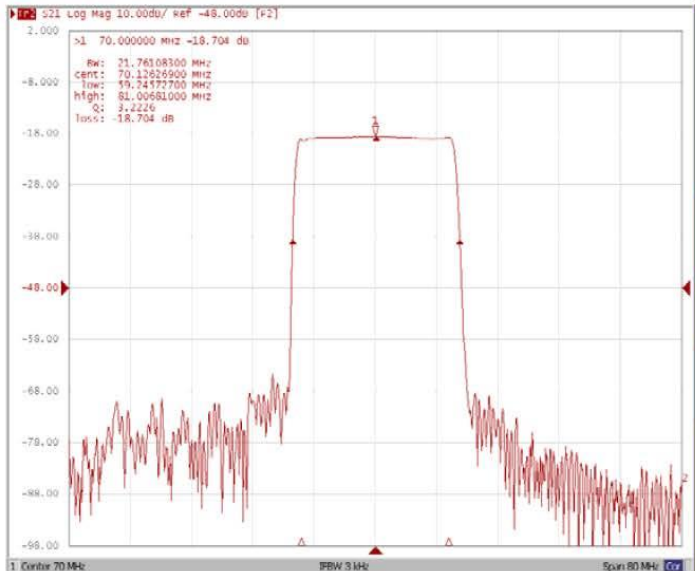
**Bandwidth at -1.0 dB**



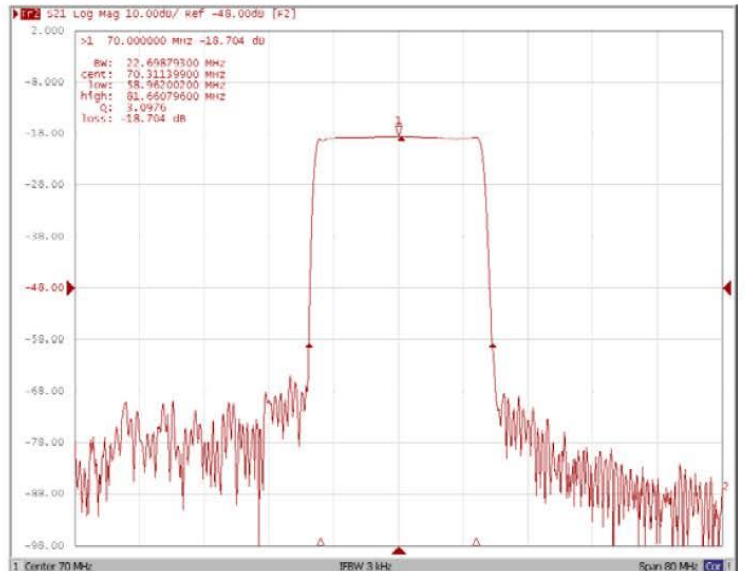
**Bandwidth at -3.0 dB**



**Bandwidth at -20.0 dB**



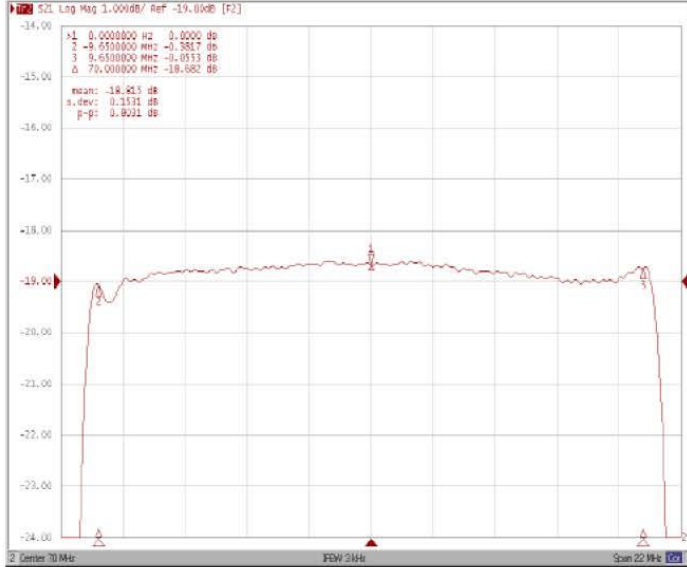
**Bandwidth at -40.0 dB**



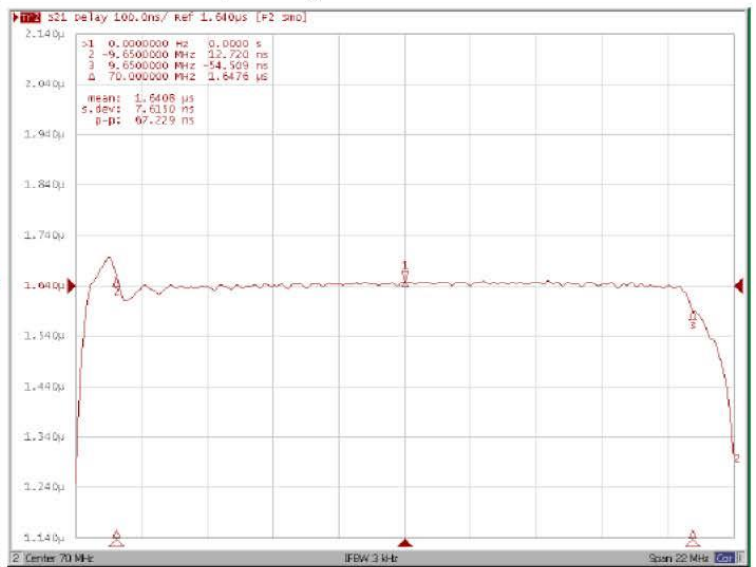


**Frequency Response:**

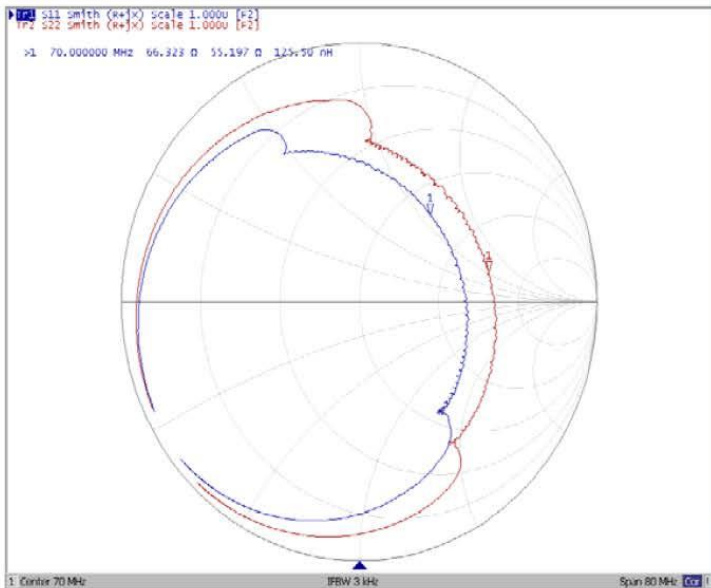
**Ripple Variation Fo±9.65MHz**



**Group Delay Variation Fo±9.65MHz**



**Smith Chart**



**VSWR**

