



# 70 MHz IF Saw Filter

## Part Number: AM70S725



Parameters Description	Unit	Minimum	Typical	Maximum
Center Frequency (Fo)	MHz	69.8	70.0	70.2
Insertion Loss at Fo	dB	-	8.5	9.5
Amplitude Ripple Variation	dB <sub>p-p</sub>	-	0.8	1.0
Group Delay Variation	nsec	-	170	220
Absolute Delay at Fo	µsec	-	1.0	-
Temperature Coefficient	ppm/°C	-	-84	-
Bandwidth at -1.0 dB	MHz	3.4	3.65	-
Bandwidth at -3.0 dB	MHz	4.0	4.45	-
Bandwidth at -40.0 dB	MHz	-	7.18	8.0
<b>Relative Attenuation:</b>				
10 ~ 64.5 MHz	dB	40	45	
74 ~ 140 MHz	dB	40	43	

Parameters Description	Unit	Minimum	Typical	Maximum
Operation Temperature Range	°C	-30	-	+80
Storage Temperature Range	°C	-40	-	+85
Maximum DC Voltage	V	-	-	10
Maximum Input Power	dBm	-	-	10
Source Impedance (Single Ended) <sub>1</sub>	Ω	-	50	-
Load Impedance (Single Ended) <sub>1</sub>	Ω	-	50	-
Package Size and Type	13.3 x 6.5 x 1.8 mm		V	

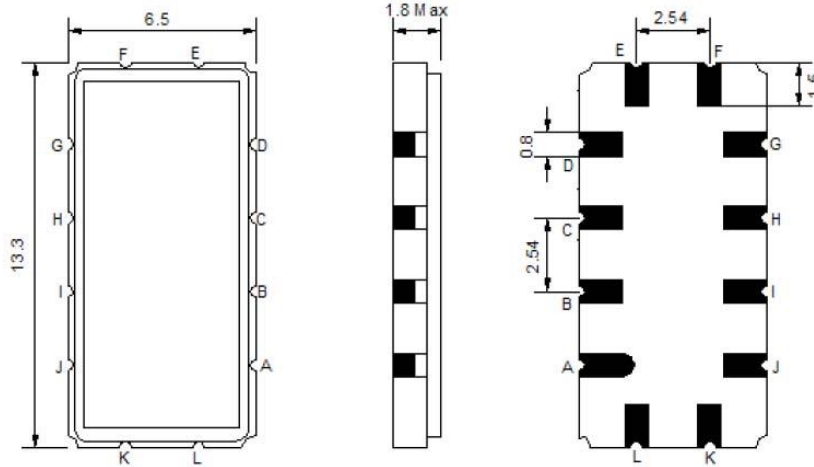


# 70 MHz IF Saw Filter

## Part Number: AM70S725

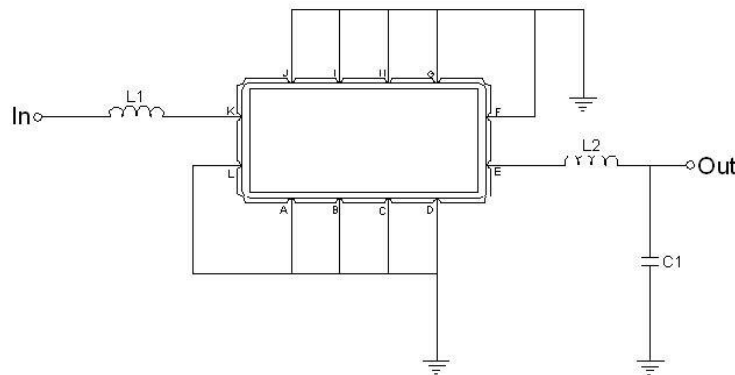


### Outline Drawing:



Pin Description	
A B C D F G H I J L	Ground
K	Input
E	Output

### Testing Environment:



Test Fixture & Values	
Input	L1=220nH   Q >40 ,
Output	L2=100nH Q.>40 , C2=22pF
Source/Load Impedance	50 Ω



# 70 MHz IF Saw Filter

## Part Number: AM70S725



### Frequency Response:

