



# 70 MHz IF Saw Filter

## Part Number: AM70S726



Parameters Description	Unit	Minimum	Typical	Maximum
Center Frequency (Fo)	MHz	69.8	70.00	70.2
Insertion Loss at Fo	dB	-	9.2	10.5
Amplitude Ripple Variation at Fo ± 2.1 MHz	dB <sub>p-p</sub>	-	0.6	1.0
Group Delay Variation at Fo ± 2.1 MHz	nsec	-	80	200
Absolute Delay at Fo	µsec	-	1.30	-
Temperature Coefficient	ppm/°C	-	-84	-
Bandwidth at -1.0 dB	MHz	5.00	5.30	-
Bandwidth at -3.0 dB	MHz	5.50	5.80	-
Bandwidth at -40.0 dB	MHz	-	7.85	8.20
<b>Relative Attenuation:</b>				
10 ~ 64 MHz	dB	40	45	-
76 ~ 140 MHz	dB	40	42	-
In/Out Return Loss at Fo	dB	-	-	-

Parameters Description	Unit	Minimum	Typical	Maximum
Operation Temperature Range	°C	-30	-	+80
Storage Temperature Range	°C	-40	-	+85
Maximum DC Voltage	V	-	-	10
Maximum Input Power	dBm	-	-	10
Source Impedance (Single Ended) <sub>1</sub>	Ω	-	50	-
Load Impedance (Single Ended) <sub>1</sub>	Ω	-	50	-
Package Size and Type	13.3 x 6.5 x 1.8 mm		V	

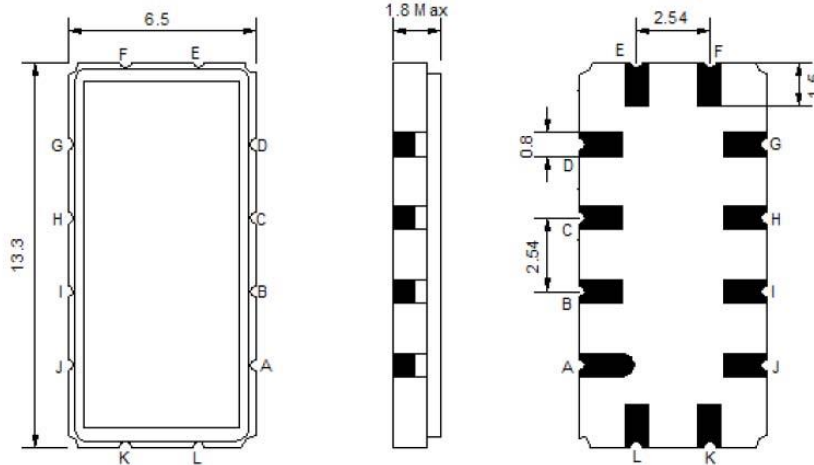


# 70 MHz IF Saw Filter

## Part Number: AM70S726

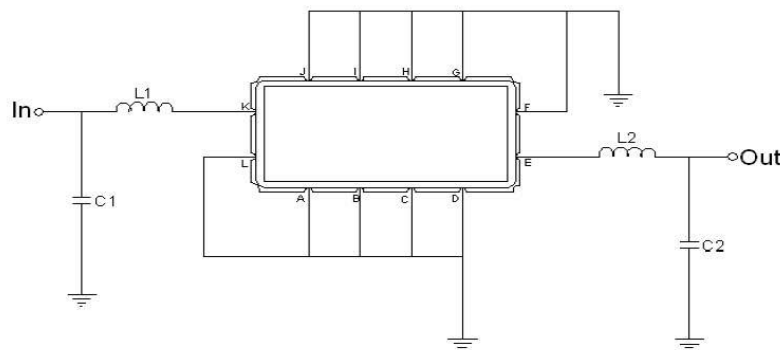


### Outline Drawing:



Pin Description	
A B C D F G H I J L	Ground
K	Input
E	Output

### Testing Environment:



Test Fixture & Values		
Input	L1=220nH	Q >40 , C1=36pF
Output	L2=180nH	Q. >40 , C2=24pF
Source/Load Impedance		50 Ω



# 70 MHz IF Saw Filter

## Part Number: AM70S726



### Frequency Response:

