



ANATECH ELECTRONICS INC
RF & Microwave Filters & Products

70 MHz IF Saw Filter

Part Number: AM70S727

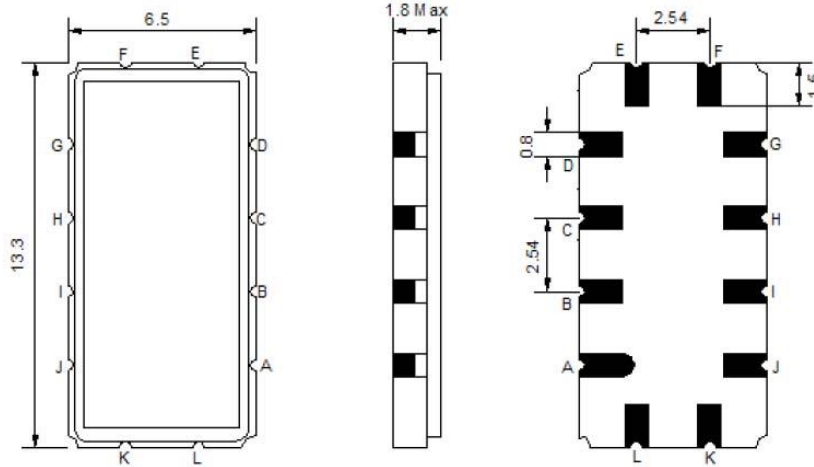


Parameters Description	Unit	Minimum	Typical	Maximum
Center Frequency (Fo)	MHz	69.8	70.00	70.2
Insertion Loss at Fo	dB	-	8.5	9.2
Passband Ripple Variation	dB	-	0.6	1.0
Group Delay Variation	nsec	-	95	150
Absolute Delay at Fo	µsec	-	0.84	-
Temperature Coefficient	ppm/°C	-	-84	-
Bandwidth at -1.0 dB	MHz	4.4	4.8	-
Bandwidth at -3.0 dB	MHz	5.2	5.6	-
Bandwidth at -35.0 dB	MHz	-	8.5	9.0
Ultimate Rejection	dB	40	42	-

Parameters Description	Unit	Minimum	Typical	Maximum
Operation Temperature Range	°C	-30	-	+80
Storage Temperature Range	°C	-40	-	+85
Maximum DC Voltage	V	-	-	10
Maximum Input Power	dBm	-	-	10
Source Impedance (Single Ended) ₁	Ω	-	50	-
Load Impedance (Single Ended) ₁	Ω	-	50	-
Package Size and Type	13.3 x 6.5 x 1.8 mm		V	

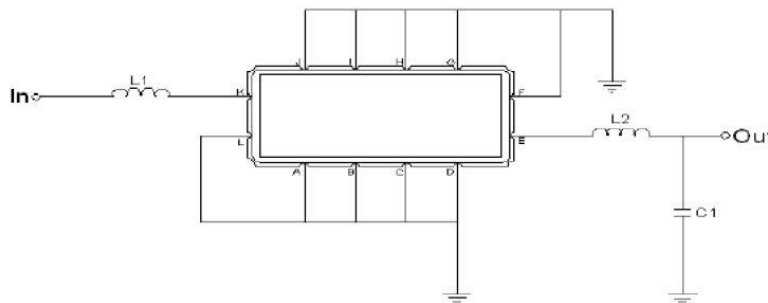


Outline Drawing:



Pin Description	
A B C D F G H I J L	Ground
K	Input
E	Output

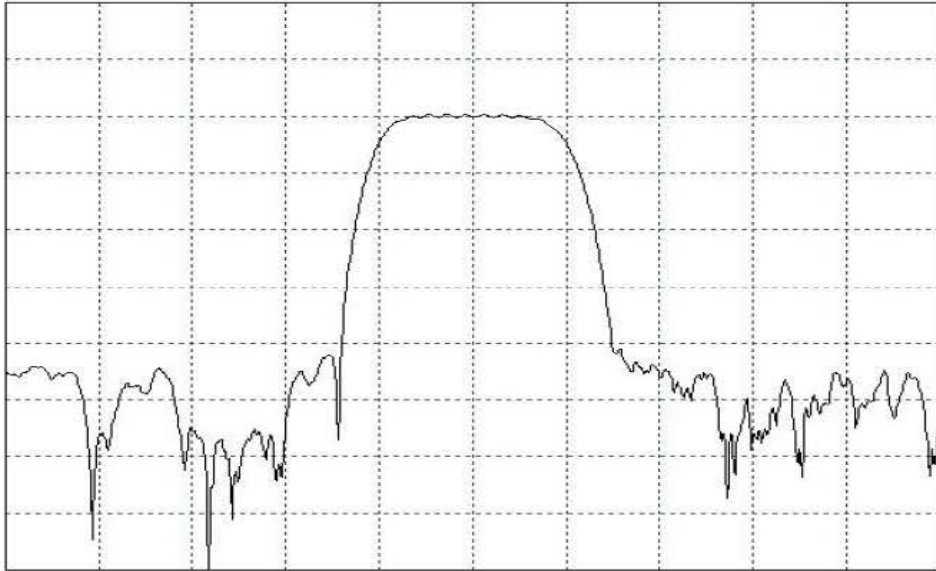
Testing Environment:



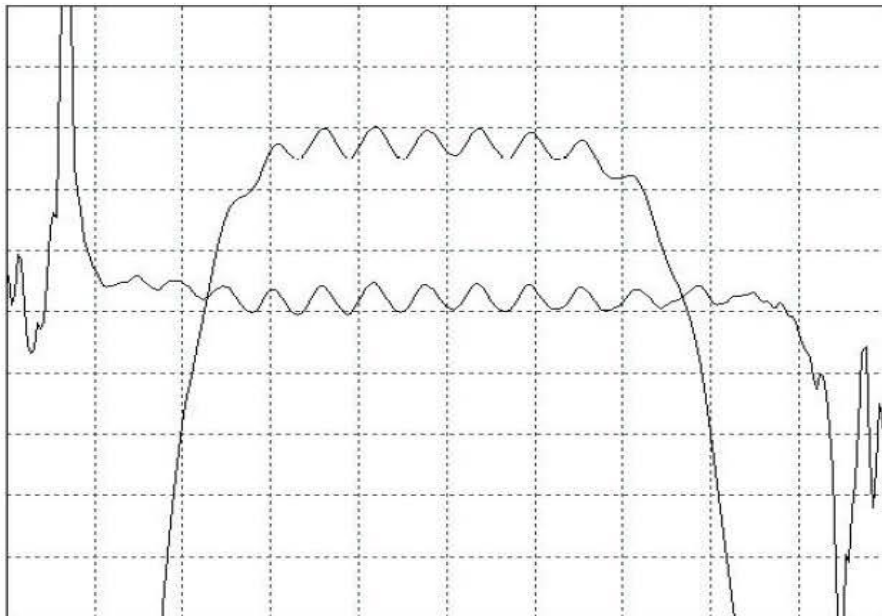
Test Fixture & Values	
Input	L1 = 220 nH
Output	L2 = 120 nH , C2 = 10 pF
Source/Load Impedance	50 Ω



Frequency Response:



Horizontal : 3.0 MHz/Div
Vertical : 10 dB/Div



Horizontal : 1.0 MHz/Div
Vertical : 1 dB/Div
Vertical : 200 ns/Div