



70 MHz IF Saw Filter

Part Number: AM70S730

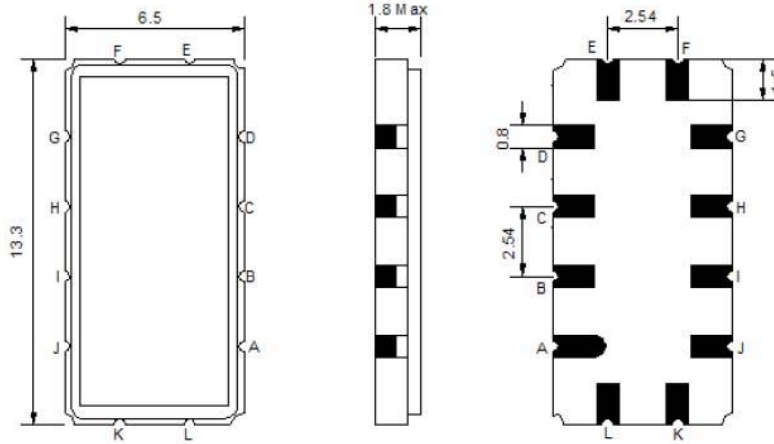


Parameters Description	Unit	Minimum	Typical	Maximum
Center Frequency (Fo)	MHz	69.8	70.00	70.2
Insertion Loss at Fo	dB	-	8.6	9.5
Passband Ripple Variation	dB _{p-p}	-	0.65	1.0
Group Delay Variation	nsec	-	80	150
Absolute Delay at Fo	µsec	-	0.85	-
Temperature Coefficient	ppm/°C	-	-84	-
Bandwidth at -1.0 dB	MHz	6.4	6.8	-
Bandwidth at -3.0 dB	MHz	7.4	7.8	-
Bandwidth at -40.0 dB	MHz	-	11.0	11.5
Ultimate Rejection	dB	40	42	-

Parameters Description	Unit	Minimum	Typical	Maximum
Operation Temperature Range	°C	-30	-	+80
Storage Temperature Range	°C	-40	-	+85
Maximum DC Voltage	V	-	-	10
Maximum Input Power	dBm	-	-	10
Source Impedance (Single Ended) ₁	Ω	-	50	-
Load Impedance (Single Ended) ₁	Ω	-	50	-
Package Size and Type		13.3 x 6.5 x 1.8 mm		V

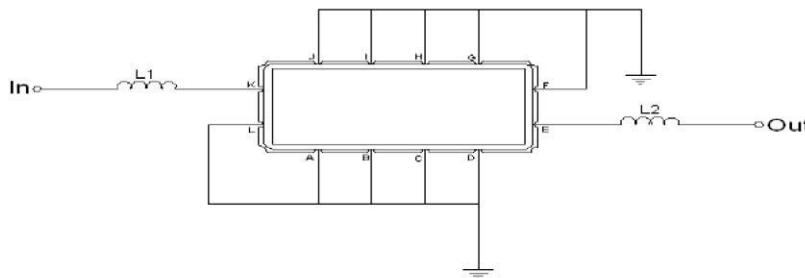


Outline Drawing:



Pin Description	
A B C D F G H I J L	Ground
K	Input
E	Output

Testing Environment:



Test Fixture & Values		
Input	L1=180nH	Q > 40
Output	L2=150nH	Q > 40
Source/Load Impedance	50 Ω	



70 MHz IF Saw Filter

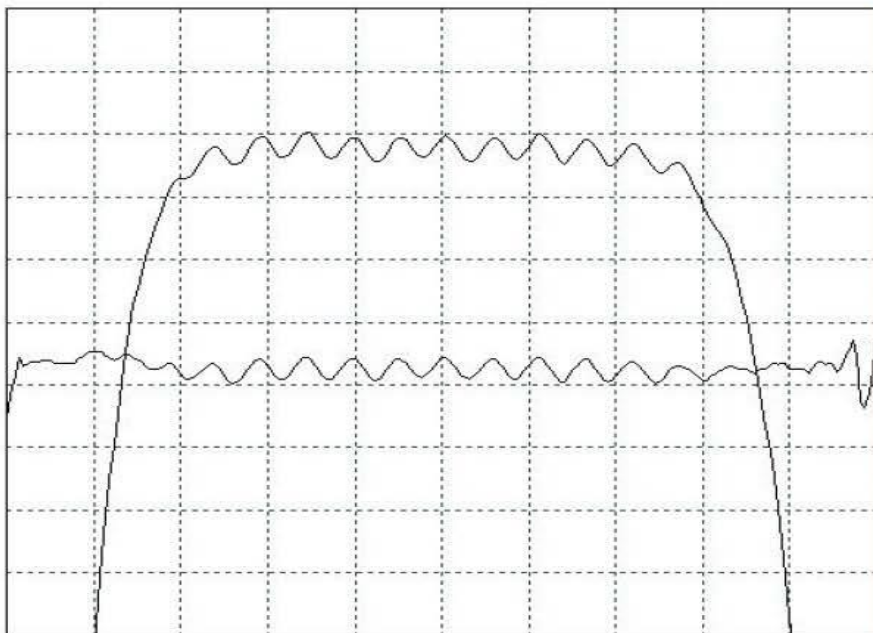
Part Number: AM70S730



Frequency Response:



Horizontal : 4.0 MHz/Div
Vertical : 10 dB/Div



Horizontal : 1.1 MHz/Div
Vertical : 1 dB/Div
Vertical : 200 ns/Div