



70 MHz IF Saw Filter

Part Number: AM70S731



Parameters Description	Unit	Minimum	Typical	Maximum
Center Frequency (Fo)	MHz	69.8	70.0	70.2
Insertion Loss at Fo	dB	-	10.7	11.5
Amplitude Ripple Variation at Fo ± 3.7 MHz	dB _{p-p}	-	0.6	1.0
Group Delay Variation at Fo ± 3.7 MHz	nsec	-	125	160
Absolute Delay at Fo	µsec	-	0.94	-
Temperature Coefficient	ppm/°C	-	-84	-
Bandwidth at -1.0 dB	MHz	8.4	8.66	-
Bandwidth at -3.0 dB	MHz	9.0	9.31	-
Bandwidth at -35.0 dB	MHz	-	11.70	13.0
Relative Attenuation:				
10 ~ 64 MHz	dB	40	46	-
77 ~ 140 MHz	dB	40	42	-

Parameters Description	Unit	Minimum	Typical	Maximum
Operation Temperature Range	°C	-40	-	+85
Storage Temperature Range	°C	-40	-	+85
Maximum DC Voltage	V	-	-	10
Maximum Input Power	dBm	-	-	10
Source Impedance (Single Ended) ₁	Ω	-	50	-
Load Impedance (Single Ended) ₁	Ω	-	50	-
Package Size and Type	13.3 x 6.5 x 1.8 mm		V	

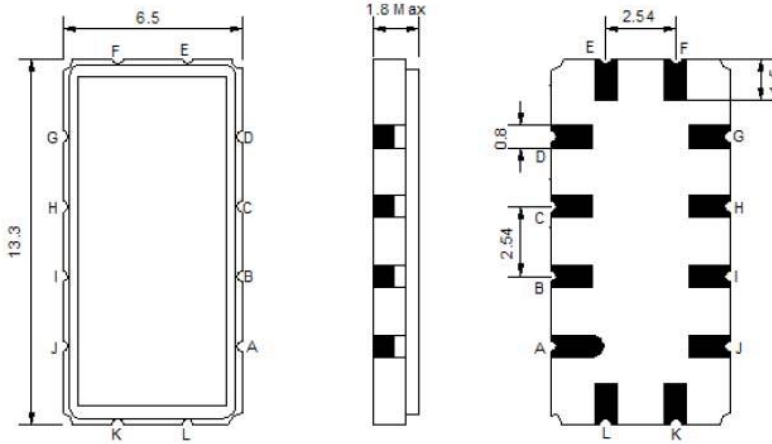


70 MHz IF Saw Filter

Part Number: AM70S731

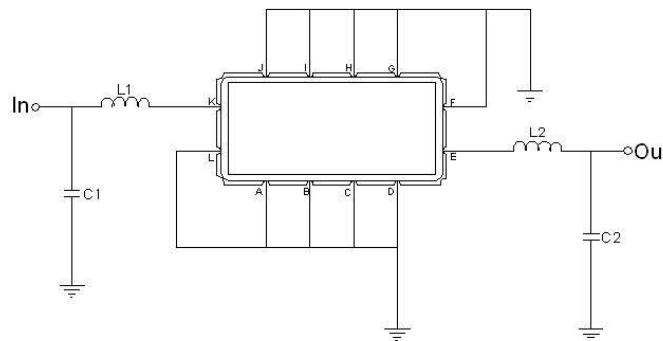


Outline Drawing:



Pin Description	
A B C D F G H I J L	Ground
K	Input
E	Output

Testing Environment:



Test Fixture & Values	
Input	L1=220nH Q >40 , C1=36pF
Output	L2=220nH Q.>40 , C2=68pF
Source/Load Impedance	50 Ω



70 MHz IF Saw Filter

Part Number: AM70S731



Frequency Response:

