



# 70 MHz IF Saw Filter

## Part Number: AM70S732

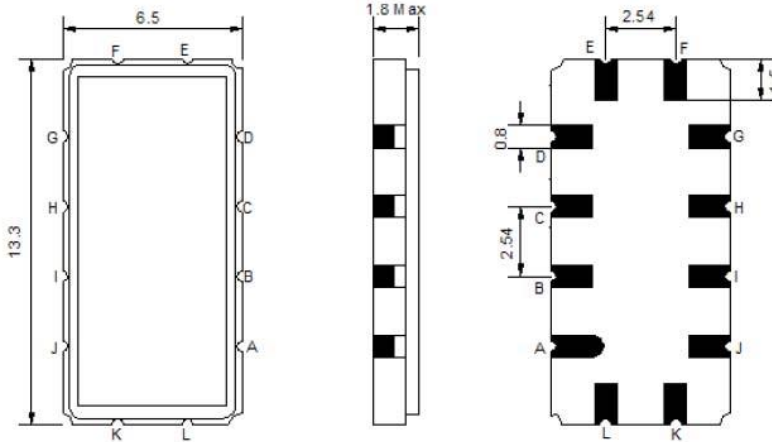


Parameters Description	Unit	Minimum	Typical	Maximum
Center Frequency (Fo)	MHz	-	70.0	-
Insertion Loss at Fo	dB	-	10.4	12.0
Amplitude Ripple Variation at Fo ± 3.7 MHz	dB <sub>p-p</sub>	-	0.55	1.0
Group Delay Variation at Fo ± 3.7 MHz	nsec	-	55	150
Absolute Delay at Fo	µsec	-	1.2	-
Temperature Coefficient	ppm/°C	-	-84	-
Bandwidth at -1.0 dB	MHz	9.5	9.8	-
Bandwidth at -3.0 dB	MHz	10.2	10.4	-
Bandwidth at -40.0 dB	MHz	-	13.1	14.0
<b>Relative Attenuation:</b>				
Lower Sidelobe	dB	40	48	-
Upper Sidelobe	dB	40	45	-
In/Out Return Loss at Fo	dB	-	-	-

Parameters Description	Unit	Minimum	Typical	Maximum
Operation Temperature Range	°C	-30	-	+80
Storage Temperature Range	°C	-40	-	+85
Maximum DC Voltage	V	-	-	10
Maximum Input Power	dBm	-	-	10
Source Impedance (Single Ended) <sub>1</sub>	Ω	-	50	-
Load Impedance (Single Ended) <sub>1</sub>	Ω	-	50	-
Package Size and Type		13.3 x 6.5 x 1.8 mm		V

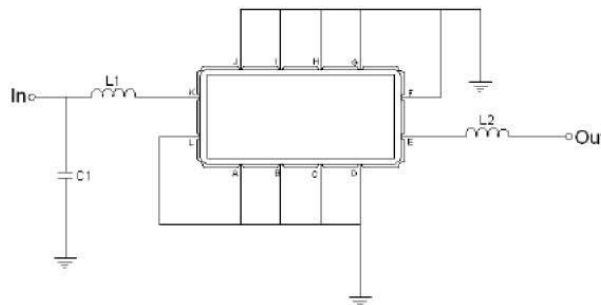


**Outline Drawing:**



Pin Description	
A B C D F G H I J L	Ground
K	Input
E	Output

**Testing Environment:**



Test Fixture & Values	
Input	L1=220nH Q >40, C1=20pF
Output	L2=180nH Q. >40
Source/Load Impedance	50 Ω



# 70 MHz IF Saw Filter

## Part Number: AM70S732



### Frequency Response:

