



# 70 MHz IF Saw Filter

## Part Number: AM70S733

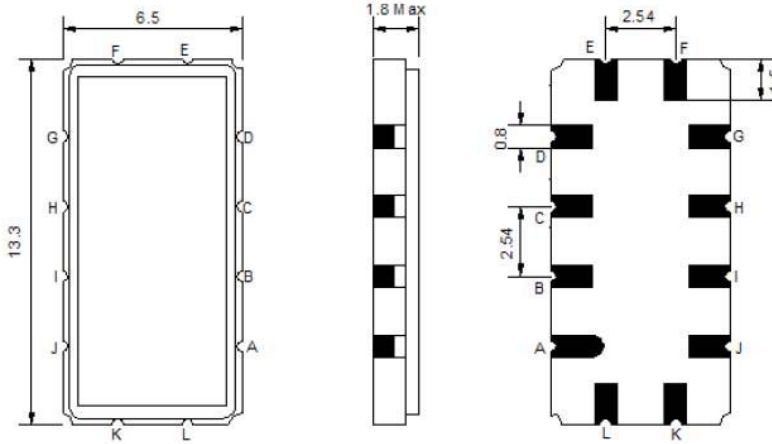


Parameters Description	Unit	Minimum	Typical	Maximum
Center Frequency (Fo)	MHz	69.8	70.0	70.2
Insertion Loss at Fo	dB	-	15.5	16.5
Amplitude Ripple Variation at Fo ± 8.2 MHz	dB <sub>p-p</sub>	-	0.5	1.0
Group Delay Variation at Fo ± 8.2 MHz	nsec	-	25	50
Absolute Delay at Fo	µsec	-	0.85	-
Temperature Coefficient	ppm/°C	-	-84	-
Bandwidth at -1.0 dB	MHz	18.7	18.99	-
Bandwidth at -3.0 dB	MHz	19.7	20.05	-
Bandwidth at -35.0 dB	MHz	-	24.08	25.5
<b>Relative Attenuation:</b>				
10 ~ 57 MHz	dB	40	45	-
83 ~ 140 MHz	dB	40	45	-
In/Out Return Loss at Fo	dB	-	-	-

Parameters Description	Unit	Minimum	Typical	Maximum
Operation Temperature Range	°C	-30	-	+80
Storage Temperature Range	°C	-40	-	+85
Maximum DC Voltage	V	-	-	10
Maximum Input Power	dBm	-	-	10
Source Impedance (Single Ended) <sub>1</sub>	Ω	-	50	-
Load Impedance (Single Ended) <sub>1</sub>	Ω	-	50	-
Package Size and Type	13.3 x 6.5 x 1.8 mm		V	

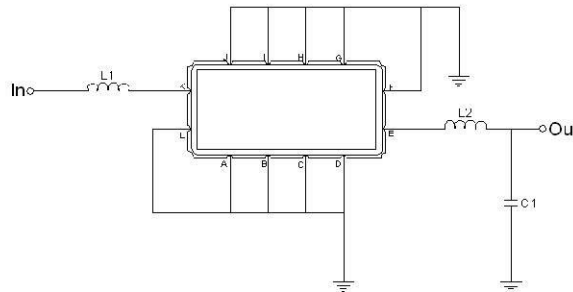


**Outline Drawing:**



Pin Description	
A B C D F G H I J L	Ground
K	Input
E	Output

**Testing Environment:**



Test Fixture & Values	
Input	L1=68nH   Q >40 ,
Output	L2=270nH   Q >40 , C2=20pF
Source/Load Impedance	50 Ω



# 70 MHz IF Saw Filter

## Part Number: AM70S733



### Frequency Response:

