



# 70 MHz IF Saw Filter

## Part Number: AM70S734

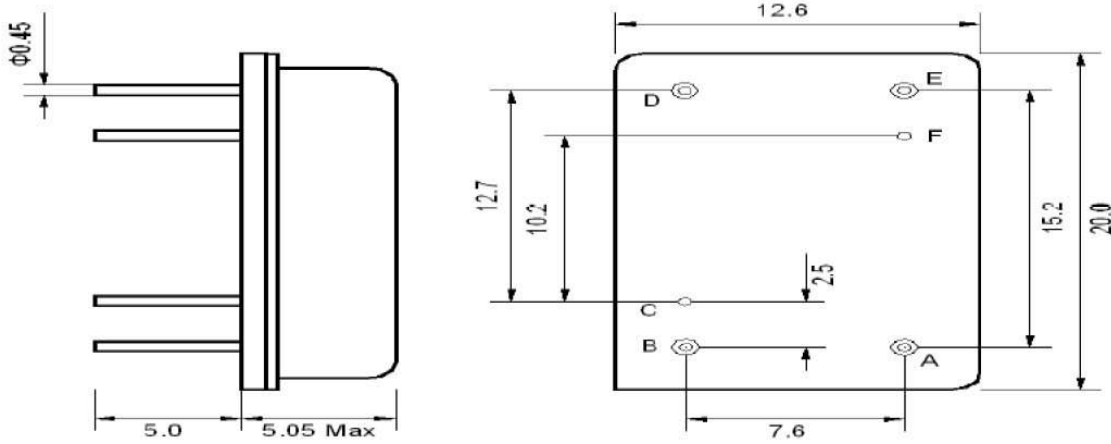


Parameters Description	Unit	Minimum	Typical	Maximum
Center Frequency (Fo)	MHz	69.8	70.0	70.2
Insertion Loss at Fo	dB	-	20.7	22.5
Amplitude Ripple Variation at Fo ± 17.5 MHz	dB <sub>p-p</sub>	-	0.5	1.0
Group Delay Variation at Fo ± 17.5 MHz	nsec	-	18	30
Absolute Delay at Fo	µsec	-	0.89	-
Temperature Coefficient	ppm/°C	-	-72	-
Bandwidth at -1.0 dB	MHz	39.0	39.7	-
Bandwidth at -3.0 dB	MHz	40.0	40.8	-
Bandwidth at -40.0 dB	MHz	-	46.8	48.5
<b>Relative Attenuation:</b>				
Lower Sidelobe	dB	48	52	-
Upper Sidelobe	dB	25	32	-

Parameters Description	Unit	Minimum	Typical	Maximum
Operation Temperature Range	°C	-30	-	+80
Storage Temperature Range	°C	-40	-	+85
Maximum DC Voltage	V	-	-	10
Maximum Input Power	dBm	-	-	10
Source Impedance (Single Ended) <sub>1</sub>	Ω	-	50	-
Load Impedance (Single Ended) <sub>1</sub>	Ω	-	50	-
Package Size and Type	20.0 x 12.6 x 5.05 mm		D	

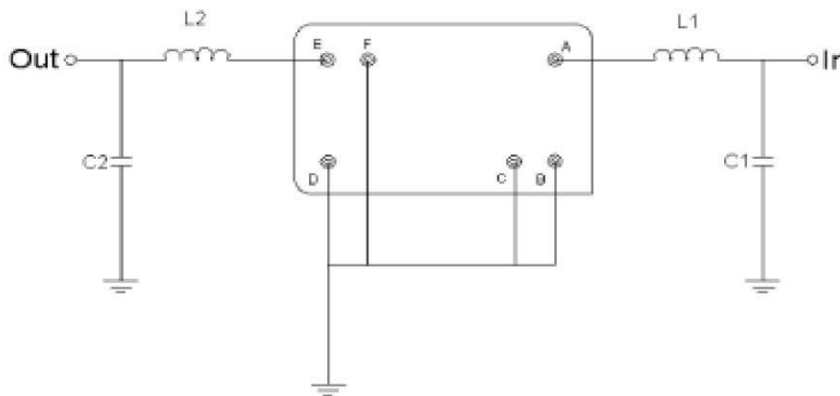


**Outline Drawing:**



Pin Description	
B C D F	Ground
A	Input
E	Output

**Testing Environment:**



Test Fixture & Values	
Input	L1 = 150 nH, C1 = 8pF
Output	L2 = 120 nH, C2 = 12pF
Source/Load Impedance	50 $\Omega$



# 70 MHz IF Saw Filter

## Part Number: AM70S734



### Frequency Response:

