



# 75 MHz IF Saw Filter

## Part Number: AM75S656

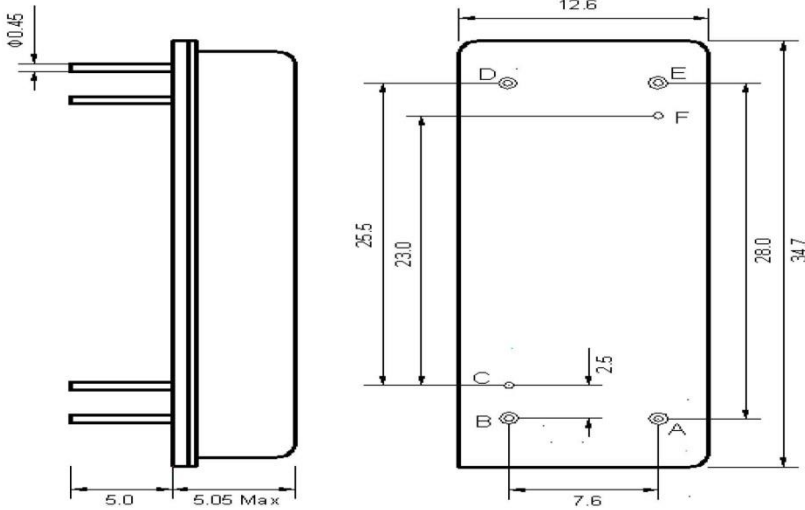


Parameters Description	Unit	Minimum	Typical	Maximum
Center Frequency (Fo)	MHz	74.95	75.00	75.05
Insertion Loss at Fo	dB	-	24.00	26.00
Passband Ripple Variation	dB	-	0.65	1.0
Group Delay Variation	nsec	-	65	100
Temperature Coefficient	ppm/°C	-	-72	-
Bandwidth at -1.0 dB	MHz	18.9	19.0	-
Bandwidth at -3.0 dB	MHz	19.2	19.4	-
Bandwidth at -18.0 dB	MHz	-	20.2	20.4
Bandwidth at -33.0 dB	MHz	-	20.5	20.7
Bandwidth at -50.0 dB	MHz	-	20.7	20.9
Ultimate Rejection	dB	50	55	-

Parameters Description	Unit	Minimum	Typical	Maximum
Operation Temperature Range	°C	-30	-	+80
Storage Temperature Range	°C	-40	-	+85
Maximum DC Voltage	V	-	-	10
Maximum Input Power	dBm	-	-	10
Source Impedance (Single Ended) <sub>1</sub>	Ω	-	50	-
Load Impedance (Single Ended) <sub>1</sub>	Ω	-	50	-
Package Size and Type	34.7 x 12.6 x 5.05 mm			F

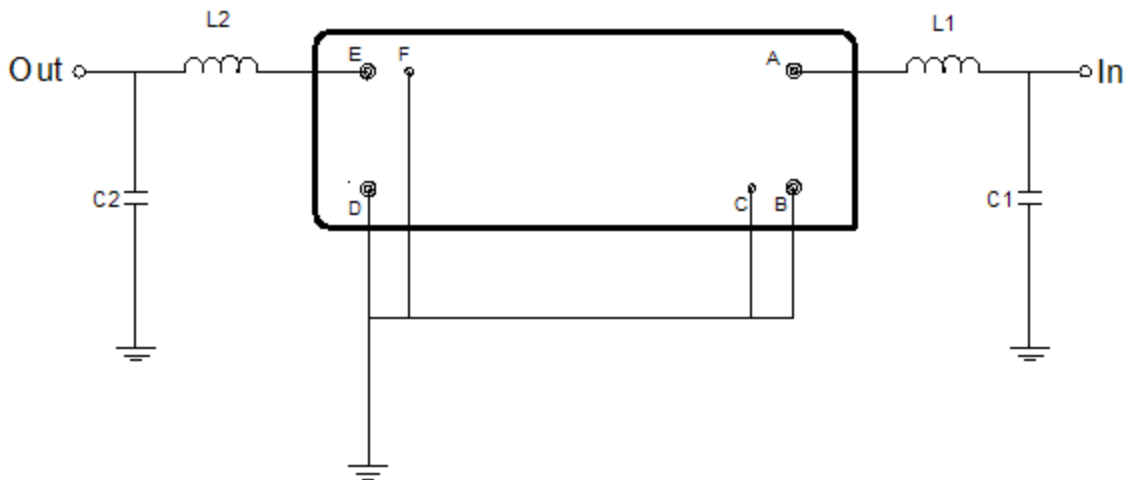


**Outline Drawing:**



Pin Description	
Ground	B C D F
Input	A
Output	E

**Testing Environment:**



Test Fixture & Values	
Input	L1 = 120 nH    C1 = 62 pF
Output	L2 = 180 nH    C2 = 43 pF
Source/Load Impedance	50 Ω