



**ANATECH ELECTRONICS INC**  
RF & Microwave Filters & Products

# 75 MHz IF Saw Filter

## Part Number: AM75S663

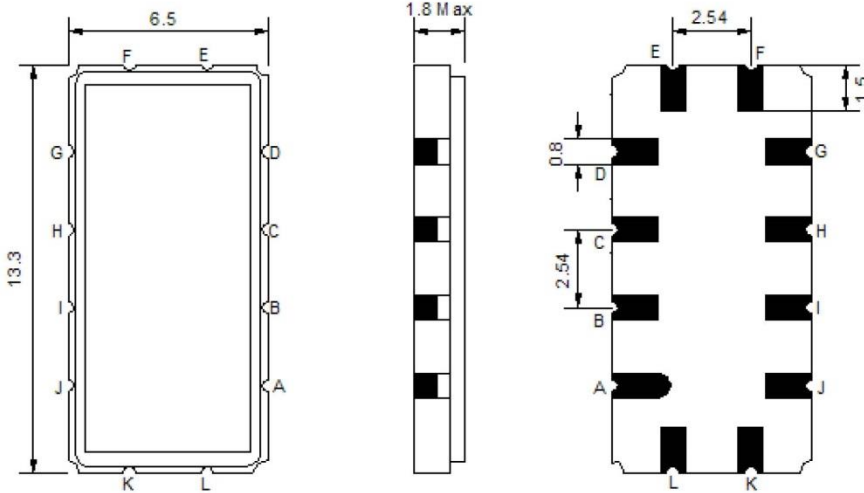


Parameters Description	Unit	Minimum	Typical	Maximum
Center Frequency (Fo)	MHz	-	75.0	-
Insertion Loss at Fo	dB	-	12.8	15.0
Amplitude Ripple within Fo ± 2.2 MHz	dBp-p	-	0.3	0.5
Group Delay Variation within Fo ± 2.2 MHz	nsec	-	50	80
Absolute Delay at Fo	usec	-	1.21	-
Temperature Coefficient	ppm/°C	-	-18	-
Bandwidth at -1.0 dB	MHz	-	5.30	-
Bandwidth at -3.0 dB	MHz	-	5.95	-
Bandwidth at -40.0 dB	MHz	-	8.40	8.60
Input VSWR at Fo	dB	-	1.2	-
Output VSWR at Fo	dB	-	1.5	-
<b>Relative Attenuation:</b>				
Lower Sidelobe	dB	40	45	-
Upper Sidelobe	dB	40	45	-

Parameters Description	Unit	Minimum	Typical	Maximum
Operation Temperature Range	°C	-30	-	+85
Storage Temperature Range	°C	-40	-	+85
Maximum DC Voltage	V	-	-	10
Maximum Input Power	dBm	-	-	30
Source Impedance (Single Ended) <sub>1</sub>	Ω	-	50	-
Load Impedance (Single Ended) <sub>1</sub>	Ω	-	50	-
Package Size and Type	13.3 x 6.5 x 1.8 mm		V	

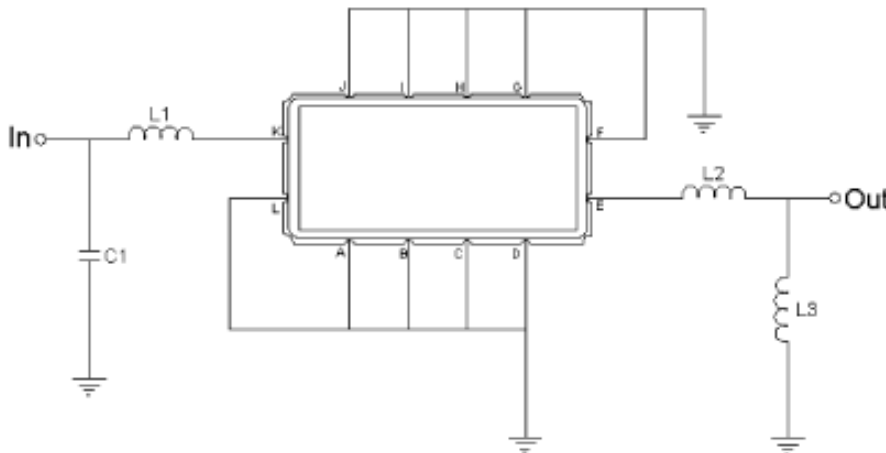


**Outline Drawing:**



Pin Description	
Ground	A B C D F G H I J L
Input	K
Output	E

**Testing Environment:**

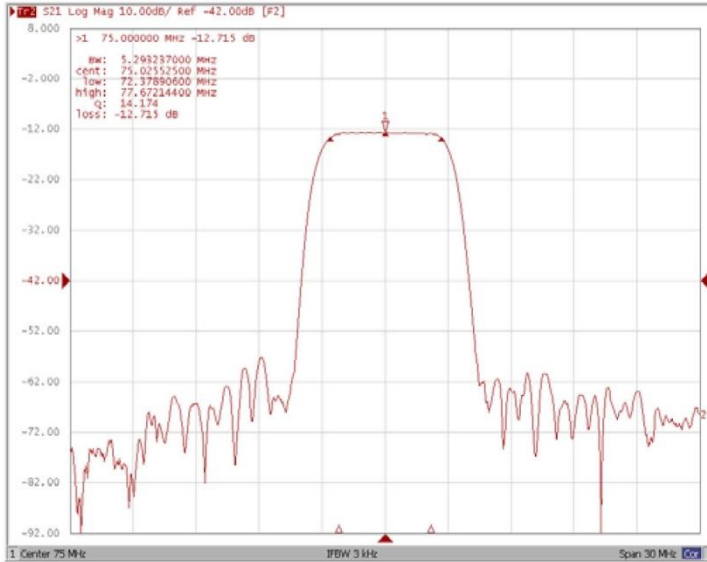


Test Fixture & Values	
Input	L1 = 68 nH    C1 = 130 pF
Output	L2 = 8.2 nH    L3 = 39 nH
Source/Load Impedance	50 Ω

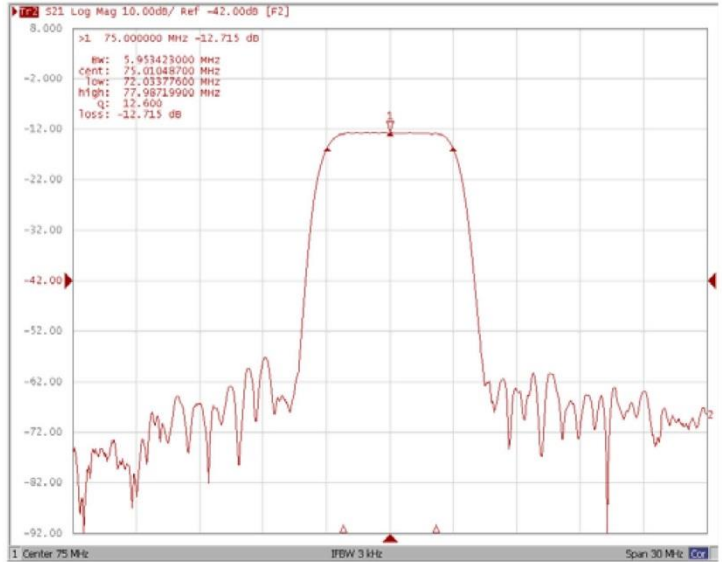


**Frequency Response:**

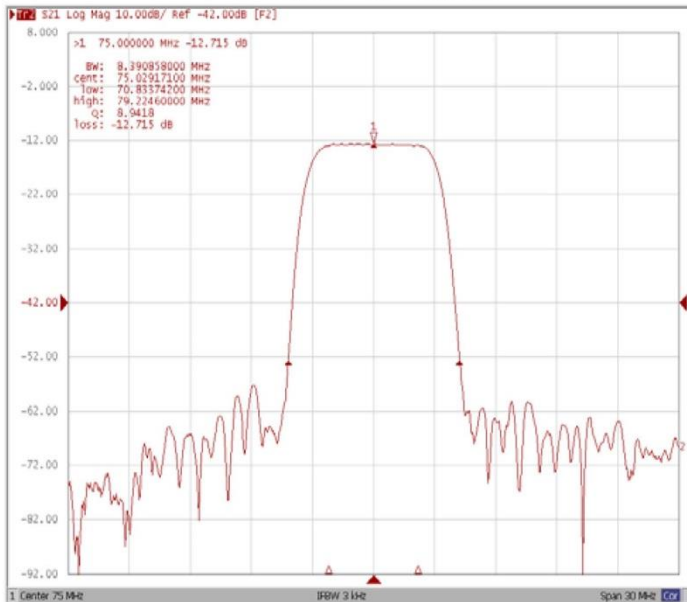
**Bandwidth at -1.0 dB**



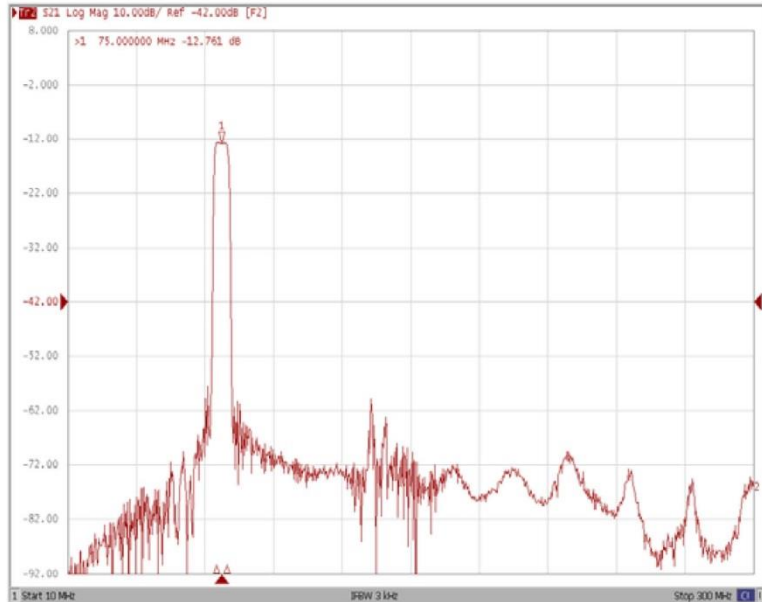
**Bandwidth at -3.0 dB**



**Bandwidth at -40.0 dB**



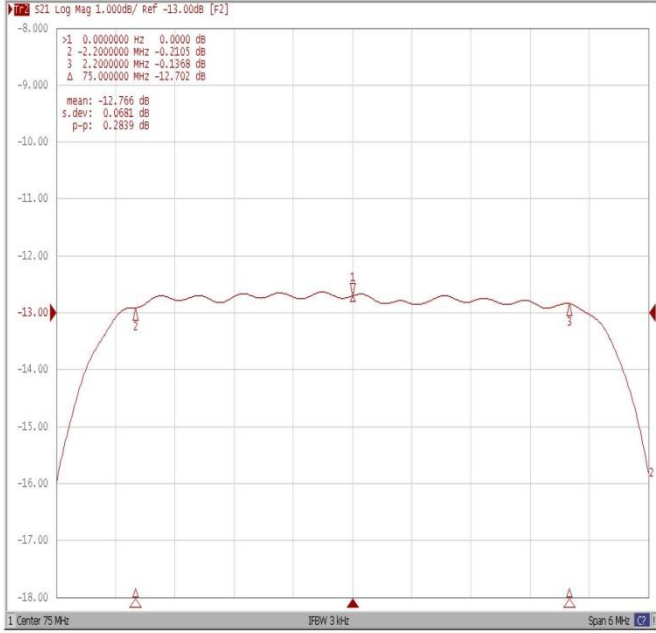
**Wideband**



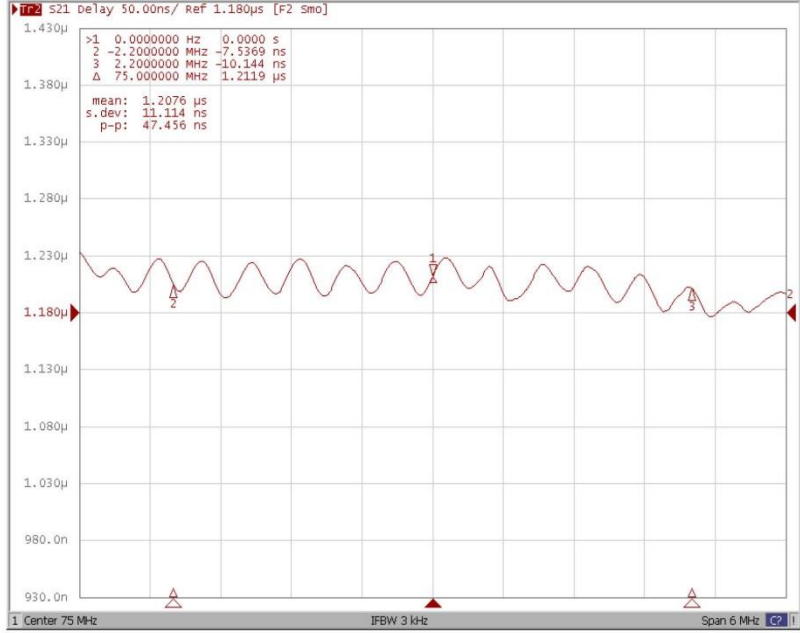


### Frequency Response:

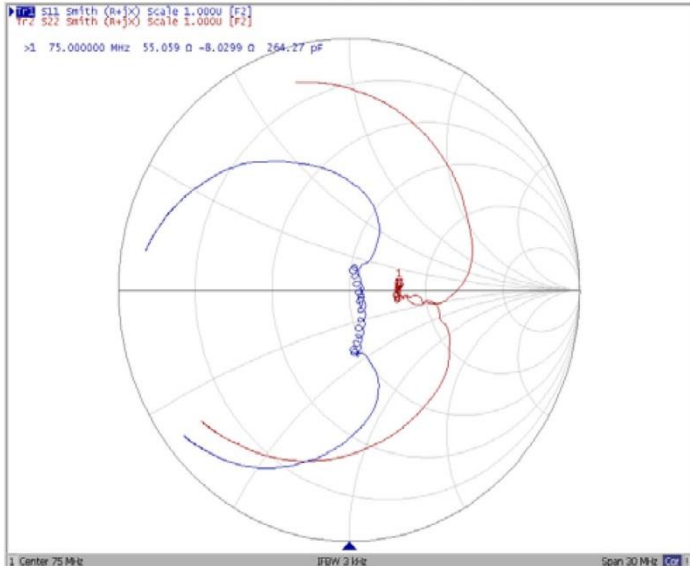
#### Ripple Variation Fo±2.2MHz



#### Group Delay Variation Fo±2.2MHz



#### Smith Chart



#### SWR

