



75 MHz IF Saw Filter

Part Number: AM75S737

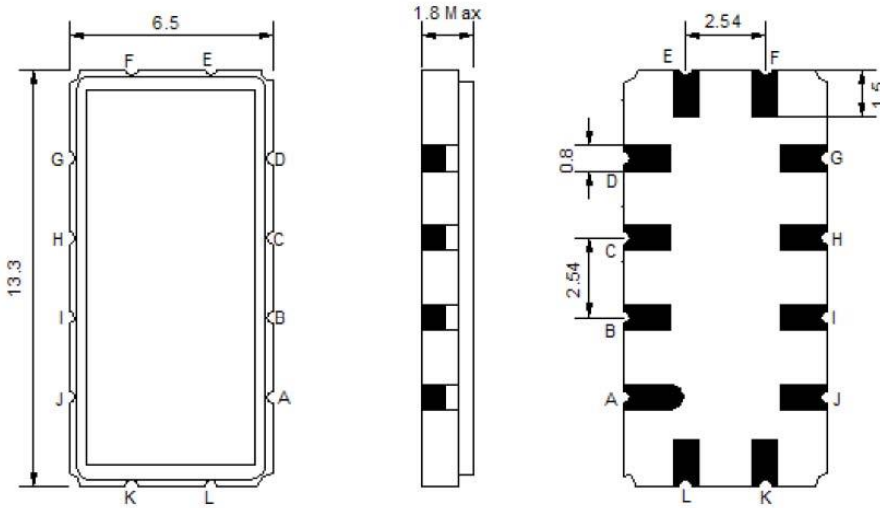


| Parameters Description | Unit | Minimum | Typical | Maximum |
|--|------|---------|---------|---------|
| Center Frequency (Fo) | MHz | - | 75.00 | - |
| Insertion Loss at Fo | dB | - | 13.5 | 15.0 |
| Passband Ripple Variation within Fo ± 19.4 MHz | dB | - | 0.3 | 1.0 |
| Group Delay Variation within Fo ± 19.4 MHz | nsec | - | 35 | 50 |
| Absolute Delay at Fo | usec | - | 0.95 | - |
| Bandwidth at -1.0 dB | MHz | 20.0 | 20.6 | - |
| Bandwidth at -3.0 dB | MHz | 21.0 | 21.4 | - |
| Bandwidth at -40.0 dB | MHz | - | 25.1 | 25.5 |
| Ultimate Rejection | dB | 42 | 48 | - |

| Parameters Description | Unit | Minimum | Typical | Maximum |
|--|---------------------|---------|---------|---------|
| Operation Temperature Range | °C | -30 | - | +80 |
| Storage Temperature Range | °C | -40 | - | +85 |
| Maximum DC Voltage | V | - | - | 10 |
| Maximum Input Power | dBm | - | - | 10 |
| Source Impedance (Single Ended) ₁ | Ω | - | 50 | - |
| Load Impedance (Single Ended) ₁ | Ω | - | 50 | - |
| Package Size and Type | 13.3 x 6.5 x 1.8 mm | | | V |

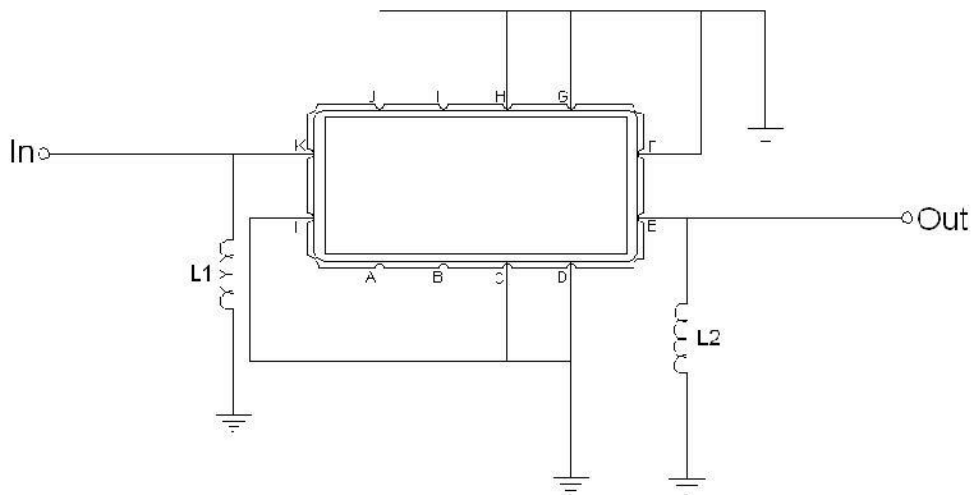


Outline Drawing:



| Pin Description | |
|-----------------|------------------------|
| Ground | A B C D F G H I J L |
| Input | K |
| Output | E |

Testing Environment:



| Test Fixture & Values | |
|-----------------------|------------|
| Input | L1 = 82 nH |
| Output | L2 = 56 nH |
| Source/Load Impedance | 50 Ω |



Frequency Response:

