



79 MHz IF Saw Filter 20 MHz Bandwidth



ANATECH ELECTRONICS INC
RF & Microwave Filters & Products

Part Number: AM79S568

Parameters Description	Unit	Minimum	Typical	Maximum
Center Frequency (Fo)	MHz	79.8	79.9	80.0
Insertion Loss at Fo	dB	-	24.0	25.5
Amplitude Ripple within Fo ± 9.65 MHz	dBp-p	-	0.60	1.00
Group Delay Variation within Fo ± 9.65 MHz	nsec	-	30	50
Absolute Delay at Fo	usec	-	1.69	-
Bandwidth at -1.0 dB	MHz	20.10	20.25	-
Bandwidth at -3.0 dB	MHz	-	20.62	-
Bandwidth at -40.0 dB	MHz	-	22.26	22.40
Temperature Coefficient	ppm/°C	-	-72	-
Relative Attenuation:				
Lower Sidelobe	dB	-	50	-
Upper Sidelobe	dB	-	50	-

Parameters Description	Unit	Minimum	Typical	Maximum
Operation Temperature Range	°C	-	+25	-
Storage Temperature Range	°C	-40	-	+85
Maximum DC Voltage	V	-	-	10
Maximum Input Power	dBm	-	-	10
Source Impedance (Single Ended) ₁	Ω	-	50	-
Load Impedance (Single Ended) ₁	Ω	-	50	-
Package Size and Type	13.3 x 6.5 x 1.8 mm		V	



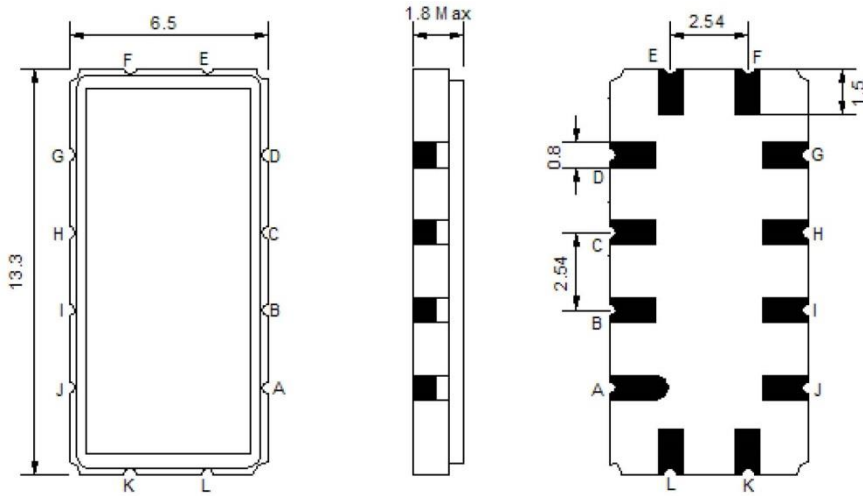
79 MHz IF Saw Filter 20 MHz Bandwidth

Part Number: AM79S568



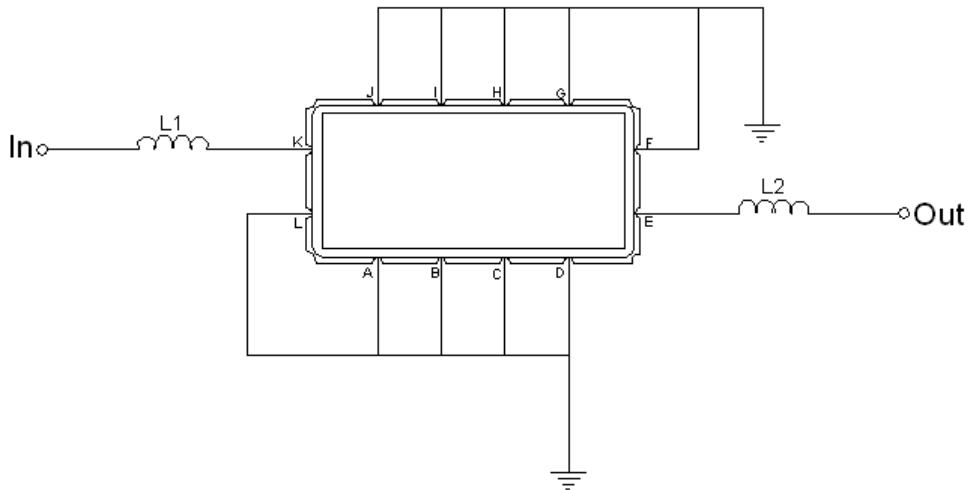
ANATECH ELECTRONICS INC
RF & Microwave Filters & Products

Outline Drawing:



Pin Description	
Ground	A B C D F G H I J L
Input	K
Output	E

Testing Environment:

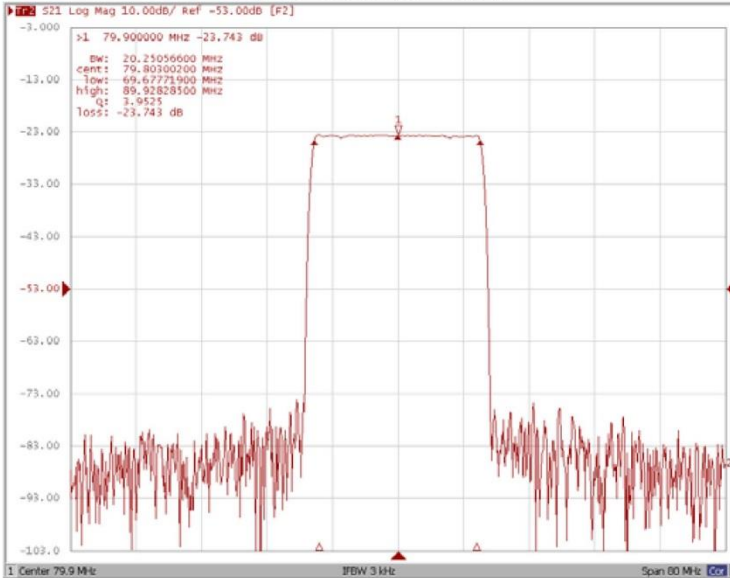


Test Fixture & Values	
Input	L1 = 120 nH
Output	L2 = 56 nH
Sour/Load Impedance	50 Ω

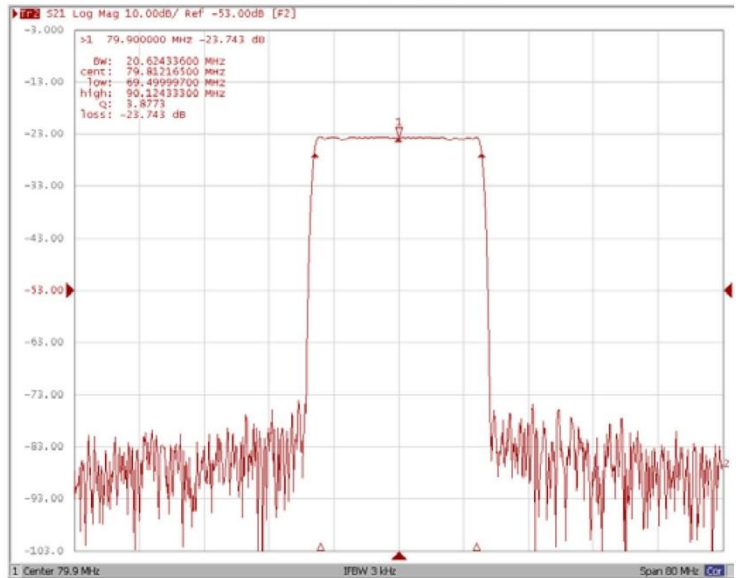


Frequency Response:

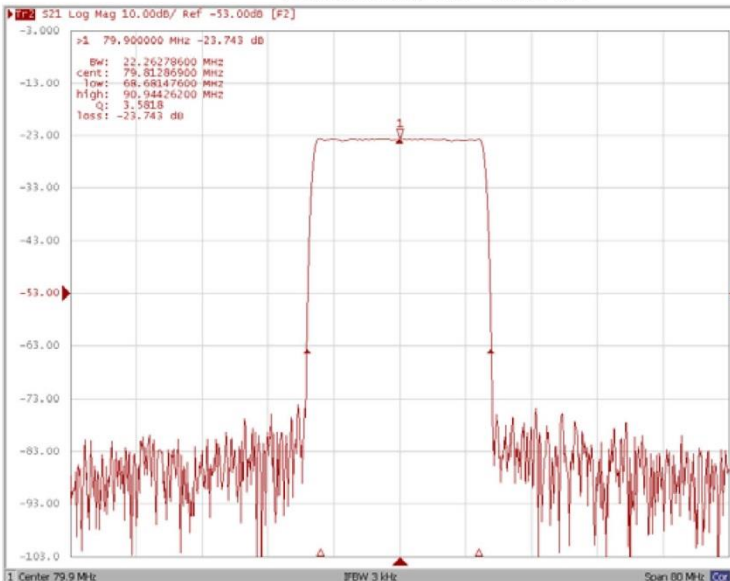
Bandwidth at -1.0 dB



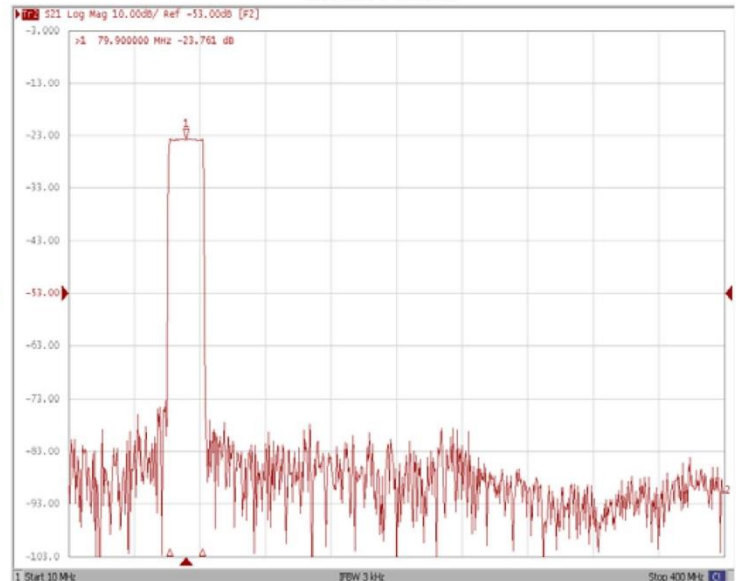
Bandwidth at -3.0 dB



Bandwidth at -40.0 dB



Wide-Band





79 MHz IF Saw Filter 20 MHz Bandwidth

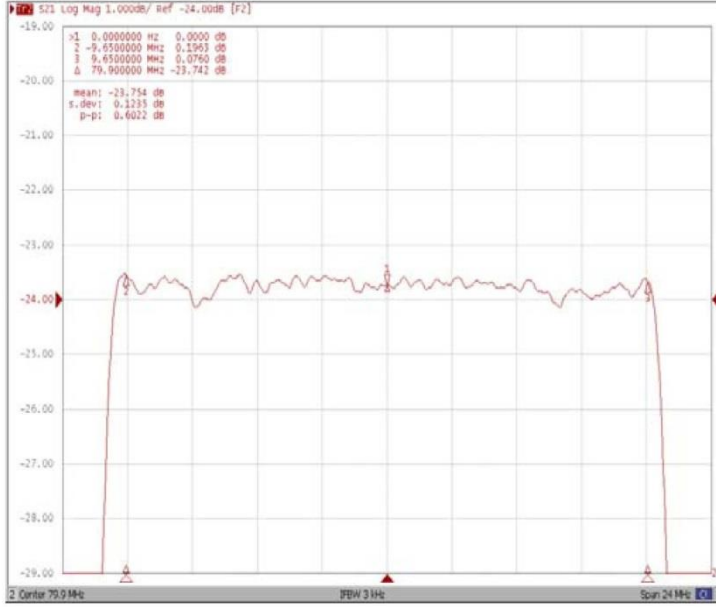
Part Number: AM79S568



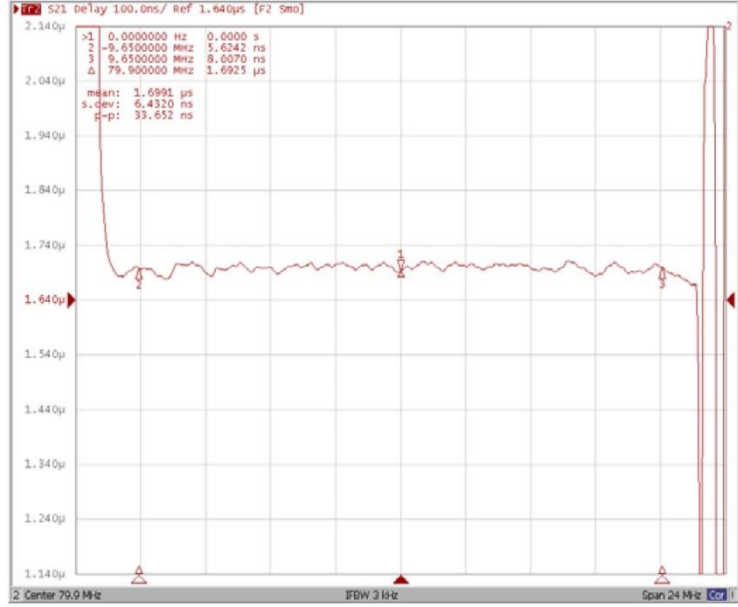
ANATECH ELECTRONICS INC
RF & Microwave Filters & Products

Frequency Response:

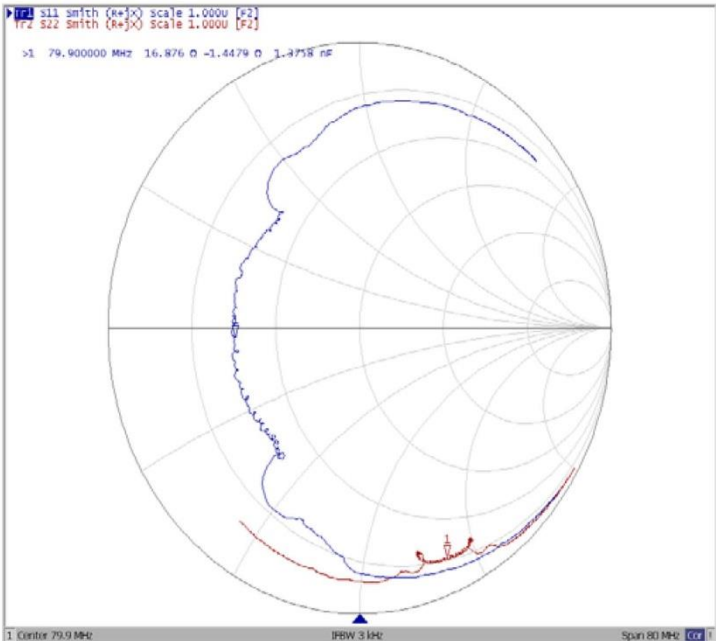
Ripple Variation Fo±9.65MHz



Group Delay Variation Fo±9.65MHz



Smith Chart



SWR

