



ANATECH ELECTRONICS INC
RF & Microwave Filters & Products

79 MHz IF Saw Filter 20 MHz Bandwidth

Part Number: AM79S569



Parameters Description	Unit	Minimum	Typical	Maximum
Center Frequency (Fo)	MHz	79.80	79.90	80.00
Insertion Loss at Fo	dB	-	24.0	25.5
Amplitude Ripple within Fo ± 9.65 MHz	dBp-p	-	0.55	1.00
Group Delay Variation within Fo ± 9.65 MHz	nsec	-	25	50
Absolute Delay at Fo	usec	-	1.60	-
Bandwidth at -1.0 dB	MHz	20.10	20.25	-
Bandwidth at -3.0 dB	MHz	-	20.60	-
Bandwidth at -40.0 dB	MHz	-	22.20	22.40
Temperature Coefficient	ppm/°C	-	-72	-
Ultimate Rejection	dB	45	50	-

Parameters Description	Unit	Minimum	Typical	Maximum
Operation Temperature Range	°C	-	+25	-
Storage Temperature Range	°C	-40	-	+85
Maximum DC Voltage	V	-	-	10
Maximum Input Power	dBm	-	-	10
Source Impedance (Single Ended) ₁	Ω	-	50	-
Load Impedance (Single Ended) ₁	Ω	-	50	-
Package Size and Type		13.3 x 6.5 x 1.8 mm		V



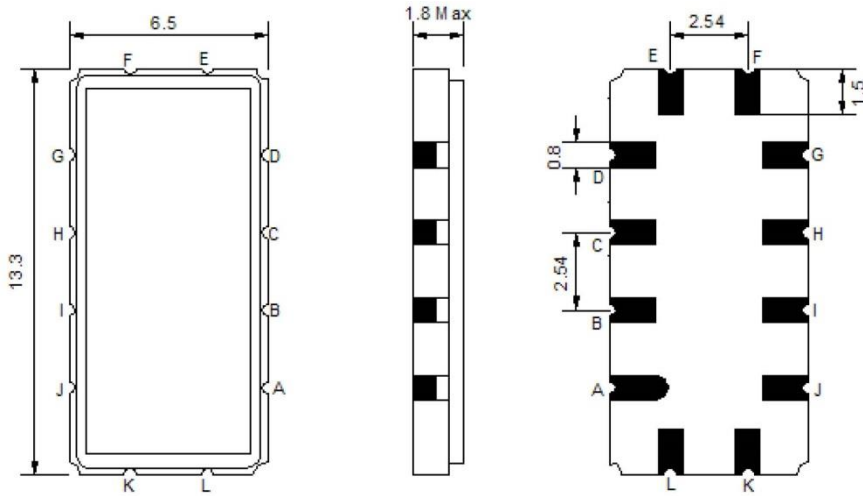
79 MHz IF Saw Filter 20 MHz Bandwidth

Part Number: AM79S569



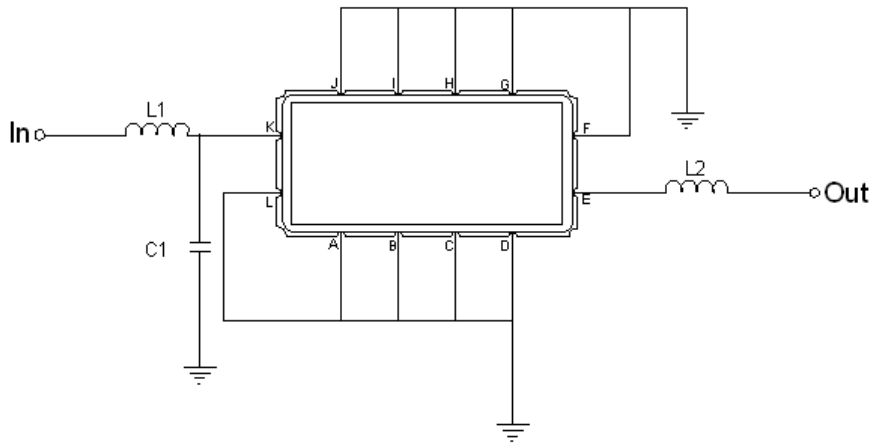
ANATECH ELECTRONICS INC
RF & Microwave Filters & Products

Outline Drawing:



Pin Description	
Ground	A B C D F G H I J L
Input	K
Output	E

Testing Environment:



Test Fixture & Values	
Input	L1 = 150 nH C1 = 10 pF
Output	L2 = 100 nH
Sour/Load Impedance	50 Ω



79 MHz IF Saw Filter 20 MHz Bandwidth

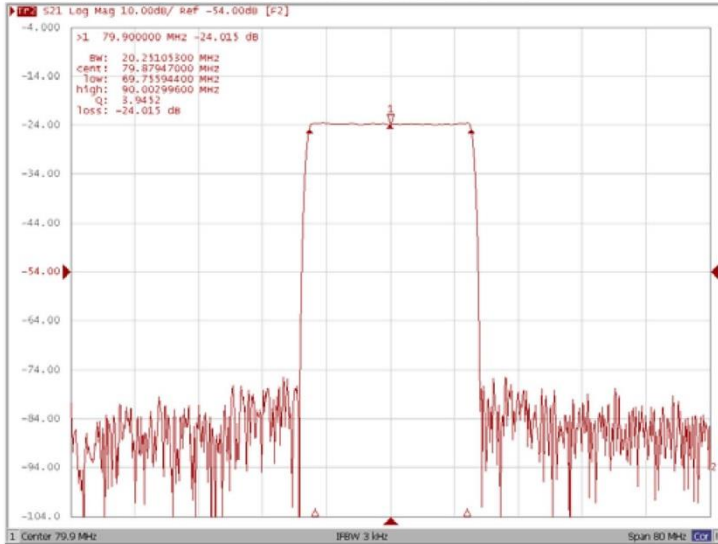
Part Number: AM79S569



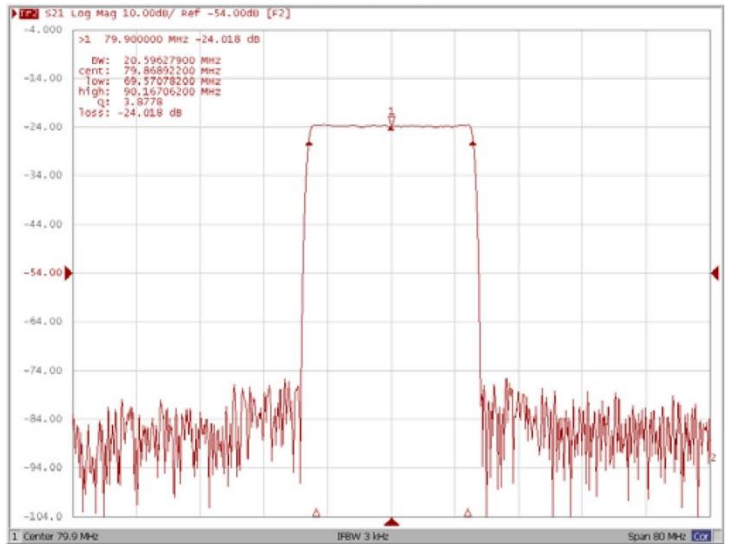
ANATECH ELECTRONICS INC
RF & Microwave Filters & Products

Frequency Response:

Bandwidth at -1.0 dB



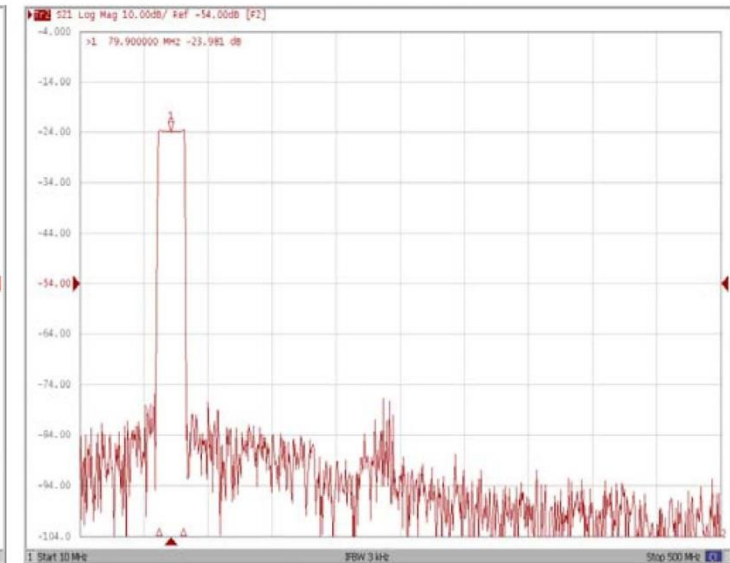
Bandwidth at -3.0 dB



Bandwidth at -40.0 dB



Wide-Band





79 MHz IF Saw Filter 20 MHz Bandwidth

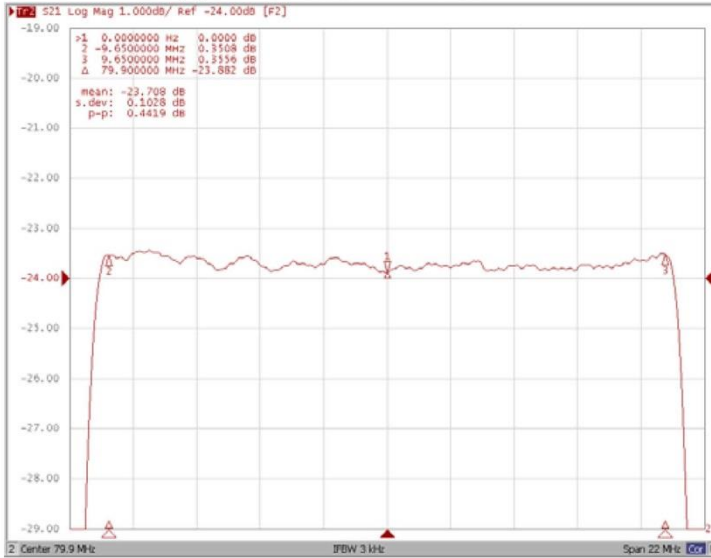
Part Number: AM79S569



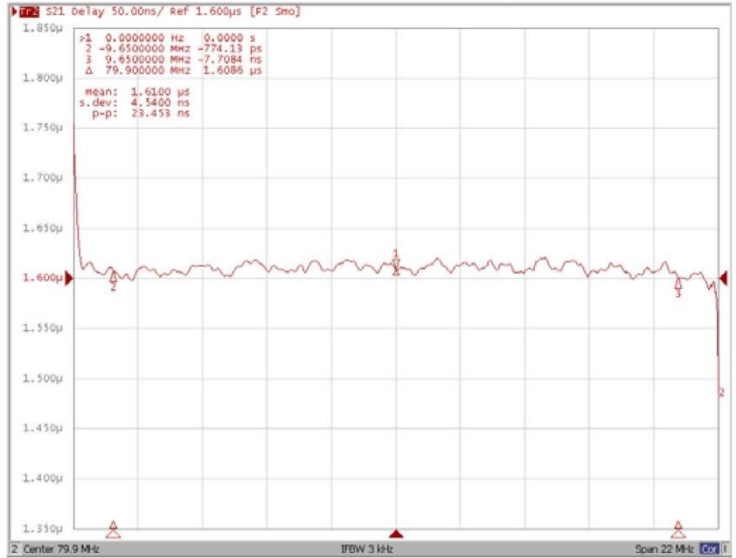
ANATECH ELECTRONICS INC
RF & Microwave Filters & Products

Frequency Response:

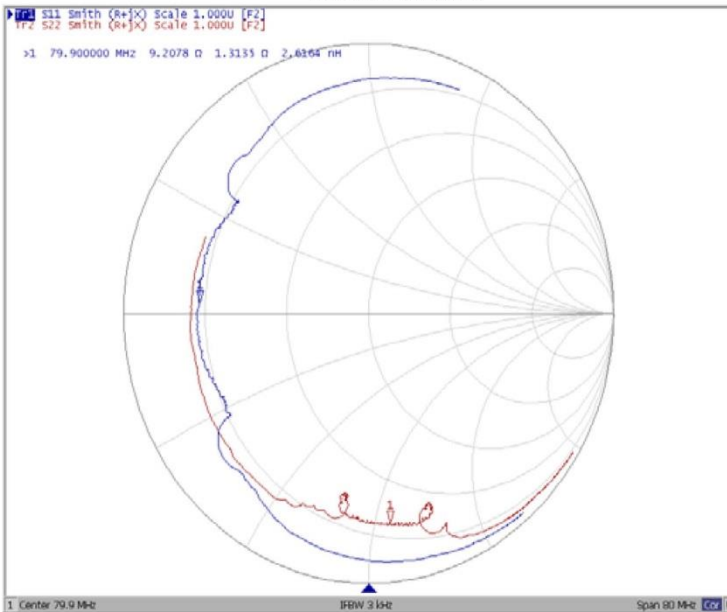
Ripple Variation Fo±9.65MHz



Group Delay Variation Fo±9.65MHz



Smith Chart



SWR

