



**ANATECH ELECTRONICS INC**  
RF & Microwave Filters & Products

# 80 MHz IF Saw Filter 20 MHz Bandwidth

**Part Number: AM80S570**



Parameters Description	Unit	Minimum	Typical	Maximum
Center Frequency (Fo)	MHz	-	80.0	-
Insertion Loss at Fo	dB	-	23.0	25.0
Passband Ripple within Fo ± 9.75 MHz	dB	-	0.50	1.00
Group Delay Variation within Fo ± 9.75 MHz	nsec	-	36	80
Absolute Delay Time	usec	-	2.38	-
Bandwidth at -1.0 dB	MHz	-	20.20	-
Bandwidth at -3.0 dB	MHz	-	20.50	-
Bandwidth at -40.0 dB	MHz	-	21.80	-
Ultimate Rejection	dB	-	52	-
Temperature Coefficient	ppm/°C	-	-72	-

Parameters Description	Unit	Minimum	Typical	Maximum
Operation Temperature Range	°C	0		+60
Storage Temperature Range	°C	-30	-	+80
Maximum DC Voltage	V	-	-	10
Maximum Input Power	dBm	-	-	10
Source Impedance (Single Ended) <sub>1</sub>	Ω	-	50	-
Load Impedance (Single Ended) <sub>1</sub>	Ω	-	50	-
Package Size and Type		20.0 x 9.8 x 1.8		D1



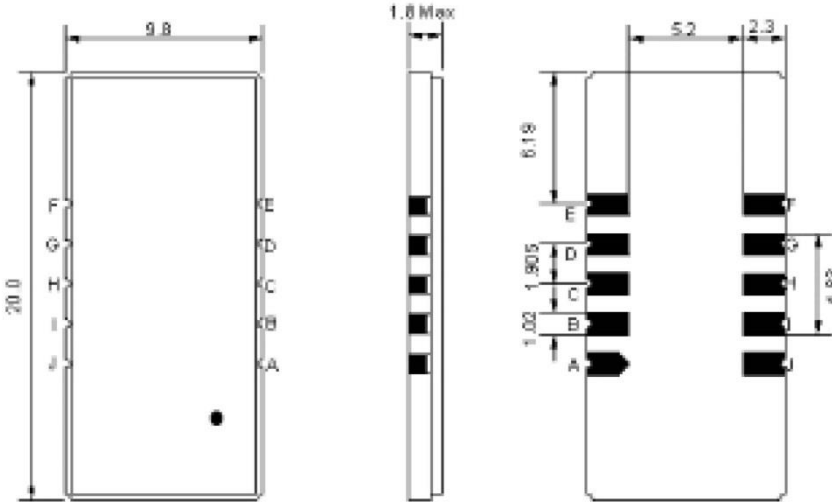
# 80 MHz IF Saw Filter 20 MHz Bandwidth

## Part Number: AM80S570



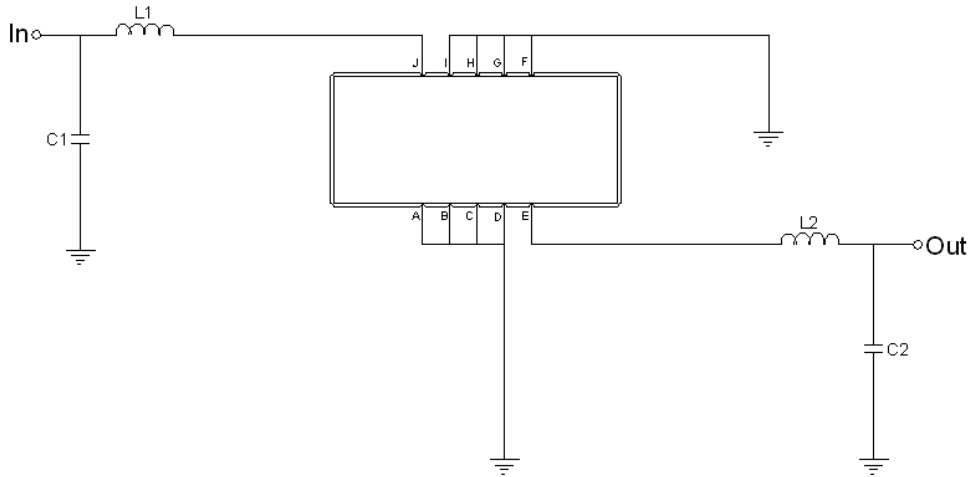
**ANATECH ELECTRONICS INC**  
RF & Microwave Filters & Products

### Outline Drawing:



Pin Description	
Ground	A B C D F G H I
Input	J
Output	E

### Testing Environment:



Test Fixture & Values		
Input	L1 = 120 nH	C1 = 8.2 pF
Output	L2 = 120 nH	C2 = 15 pF
Sour/Load Impedance	50 Ω	



# 80 MHz IF Saw Filter 20 MHz Bandwidth

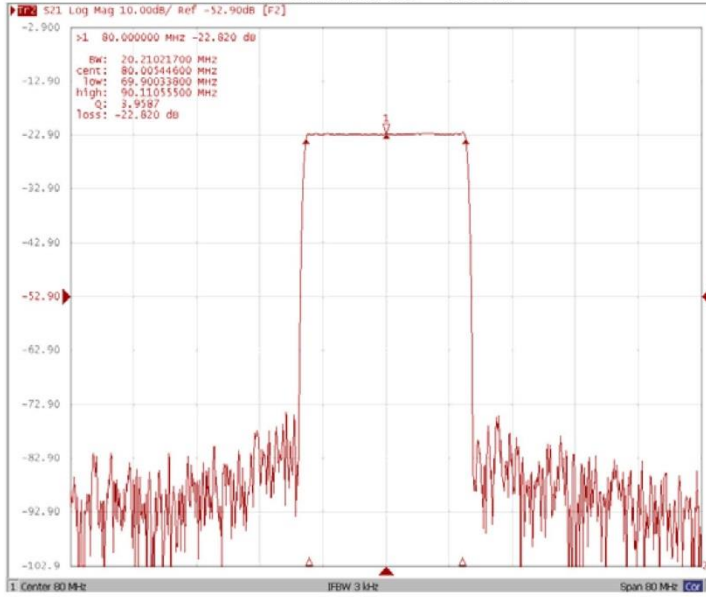
## Part Number: AM80S570



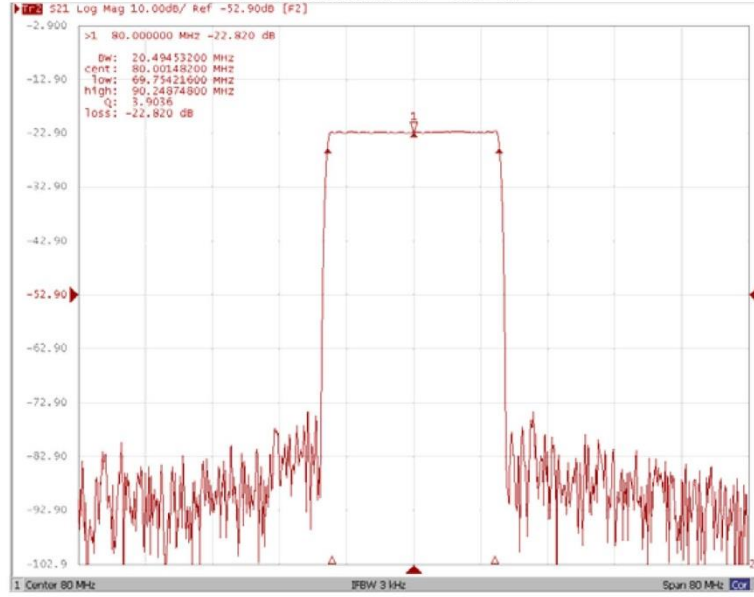
**ANATECH ELECTRONICS INC**  
RF & Microwave Filters & Products

### Frequency Response:

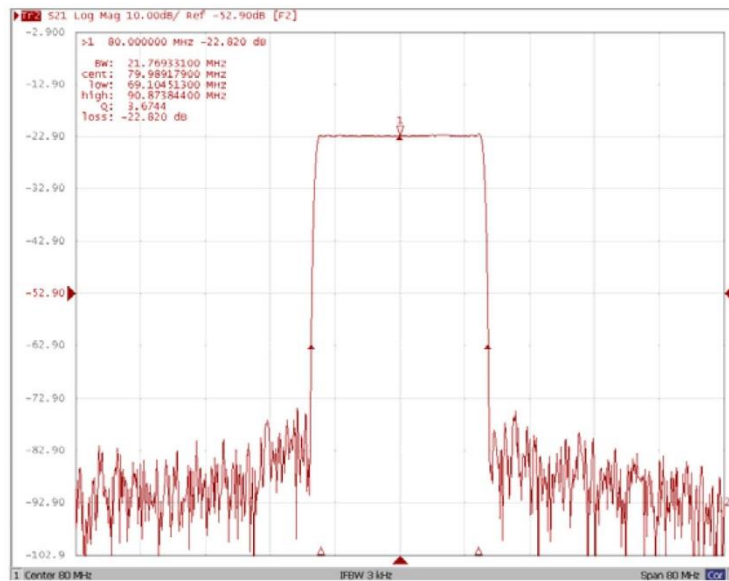
#### Bandwidth at -1.0 dB



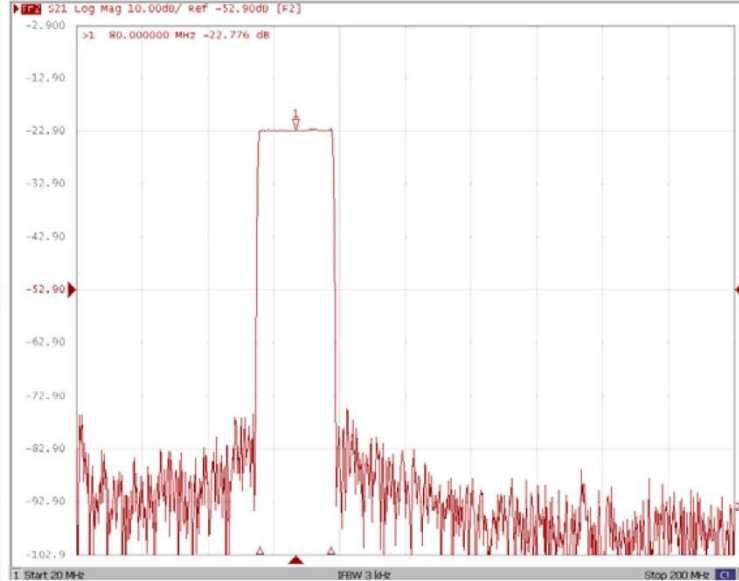
#### Bandwidth at -3.0 dB



#### Bandwidth at -40.0 dB



#### Wide Band





# 80 MHz IF Saw Filter 20 MHz Bandwidth

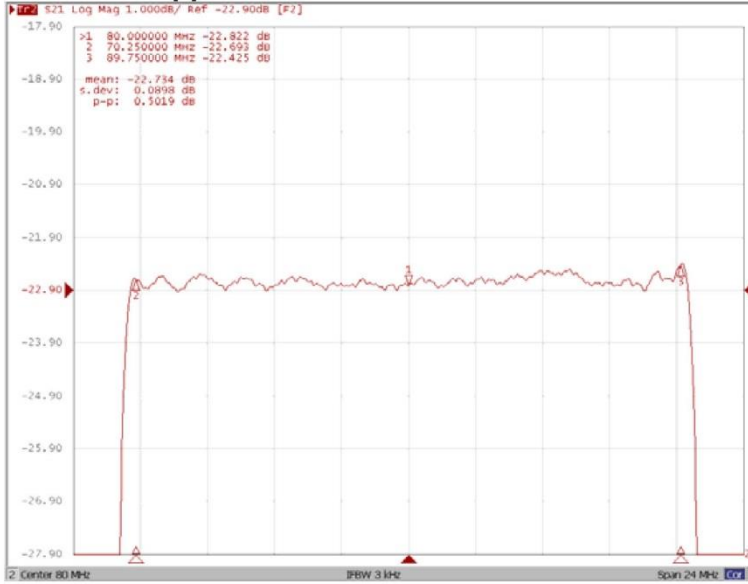
**ANATECH ELECTRONICS INC**  
RF & Microwave Filters & Products

**Part Number: AM80S570**

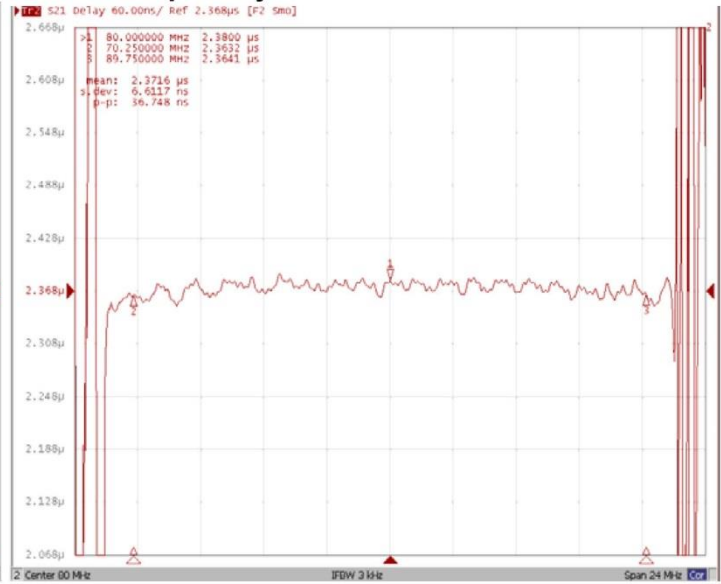


## Frequency Response:

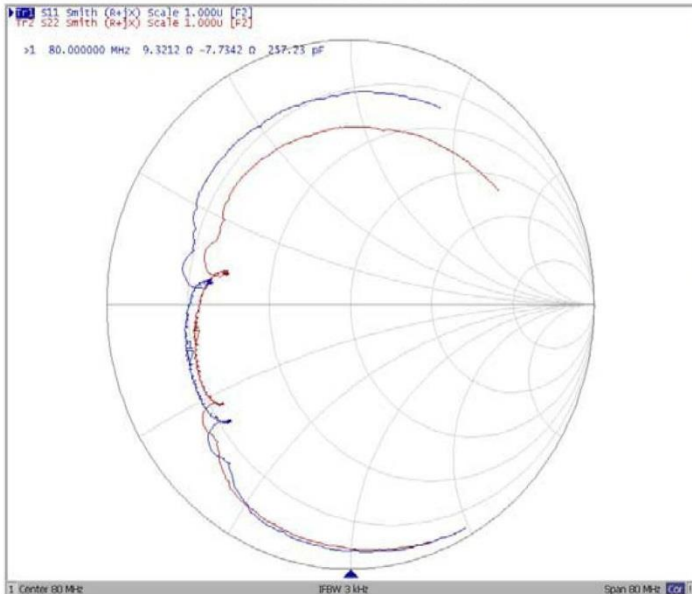
### Ripple Variation Fo±9.75MHz



### Group Delay Variation Fo±9.75MHz



### Smith Chart



### VSWR

