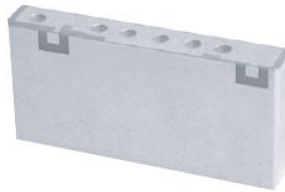




Electrical specifications

Center Frequency: 814 MHz
Bandwidth: 20 MHz
Input / Output Impedance: 50 Ohms
Passband: 804-824 MHz
Passband Insertion Loss: 804-824 MHz 2.7dB max
Passband Ripple: 0.2 dB
Passband Return Loss: 804-824 MHz 11.0dB min
Rejection: 850-870 MHz 44.0dB min
Power Handling: 1 W



Mechanical

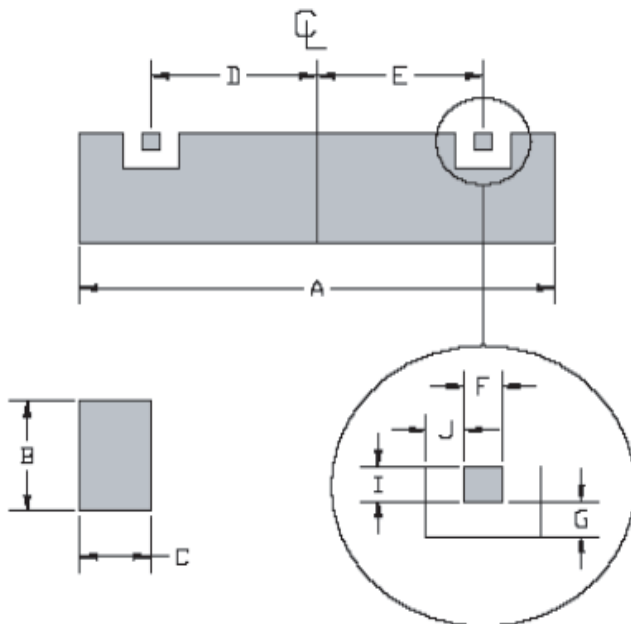
Mounting Method: SMT
Dimensions: 29.399 X 13.995 X 4.496 mm

Environmental

Operating Temperature: -30 C to +70 C
Storage Temperature: -50 C to +90 C

This product is RoHs compliant.

Mechanical Drawing



Dim	Nominal (mm)	Tolerance (mm) +/- or max
A	29.399	max
B	13.995	max
C	4.496	max
D	9.017	0.127
E	12.065	0.127
F	1.27	0.127
G	1.016	0.127
I	1.27	0.127
J	1.016	0.127



ANATECH ELECTRONICS INC
RF & Microwave Filters & Products

GSM/Cellular Ceramic BPF

Part Number: AM814B861



Response Plot:

