



844.0 MHz IF Saw Filter
Part Number: AM844S841



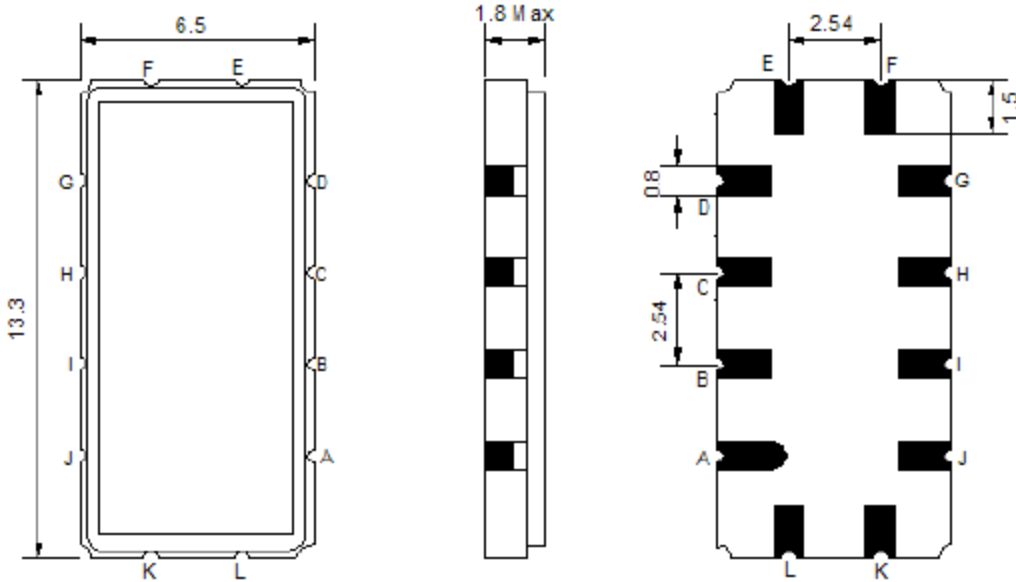
Parameters Description	Unit	Minimum	Typical	Maximum
Center Frequency (Fo)	MHz	-	844.0	-
Insertion Loss at Fo	dB	-	22.60	25.00
Amplitude Ripple (Fo ± 4.50 MHz)	dB _{p-p}	-	0.80	1.20
Group Delay Variation (Fo ± 4.50 MHz)	nsec	-	72	150
Absolute Delay at Fo	µsec	-	1.09	-
Bandwidth at -1.0 dB	MHz	-	10.00	-
Bandwidth at -35.0 dB	MHz	-	12.90	-
Attenuation at 850.50 MHz (Fo ± 4.50 MHz)	dB	-	35	-
Temperature Coefficient	ppm/°C	-	-0.036	-

Parameters Description	Unit	Minimum	Typical	Maximum
Operation Temperature Range	°C	-40	-	+80
Storage Temperature Range	°C	-40	-	+85
Maximum DC Voltage	V	-	-	-
Maximum Input Power	dBm	-	-	10
Source Impedance (Single Ended) ₁	Ω	-	50	-
Load Impedance (Single Ended) ₁	Ω	-	50	-
Package Size and Type	13.3 x 6.5 x 1.8 mm V			

Note: (1) With Matching Network (Ref. Testing Environment Circuit as show below).
Those impedances could be modified with different impedance values and/or structures, if necessary.

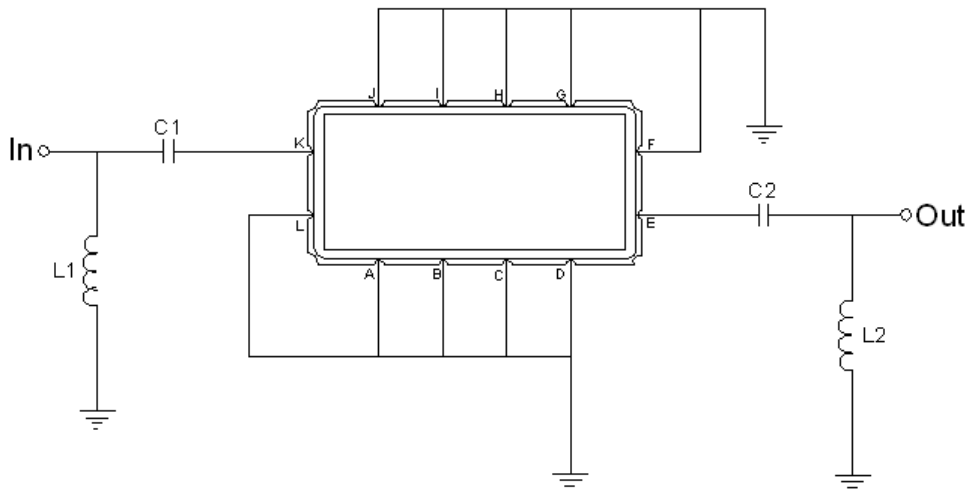


Outline Drawing:



Pin Descriptions:
 Ground – A B C D F
 G H I J L
 Input – K
 Output – E

Testing Environment:



Test Fixtures & Values:
 Input – L1=3.3nH C1=6pF
 Output – L2=4.7nH C2=4pF
 Source/Load Impedance: 50 Ω



ANATECH ELECTRONICS INC
RF & Microwave Filters & Products

844.0 MHz IF Saw Filter

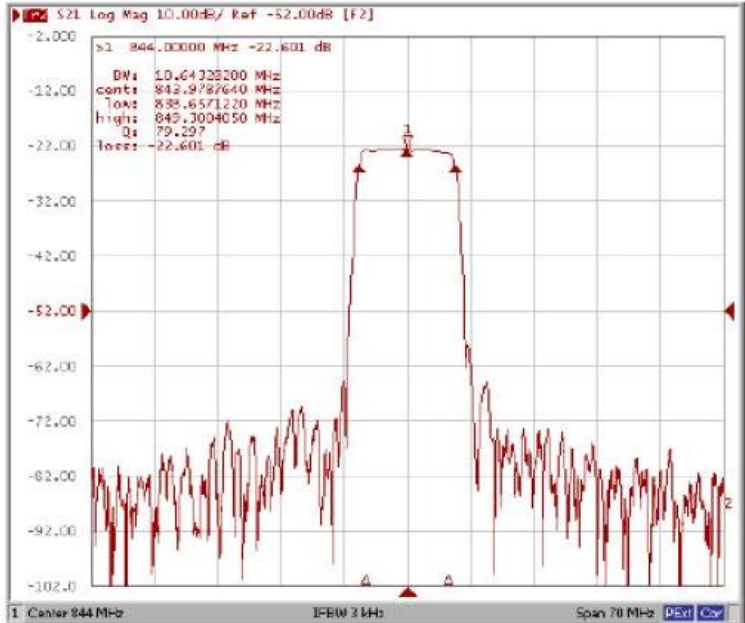
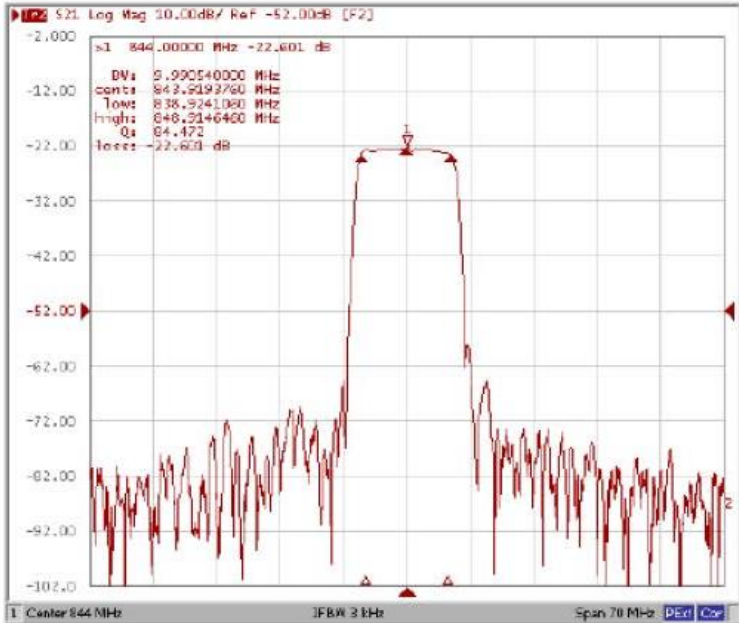
Part Number: AM844S841



***Operating Temperature : +25°C**

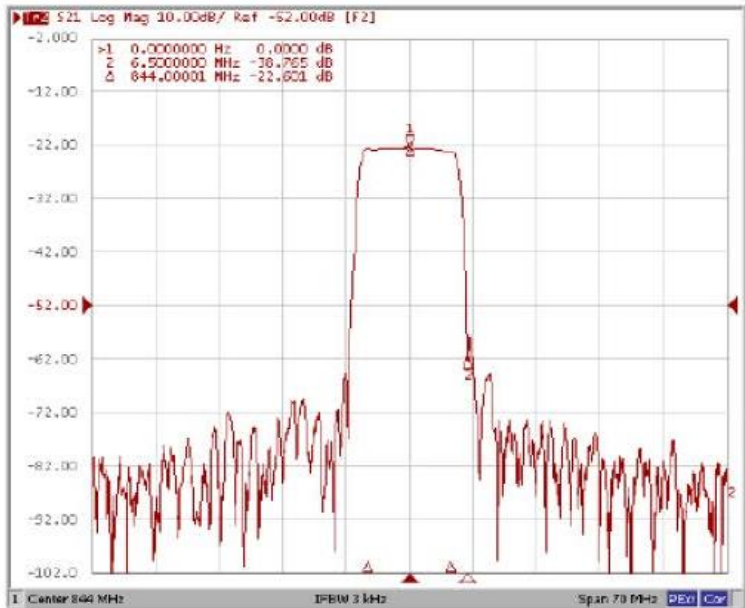
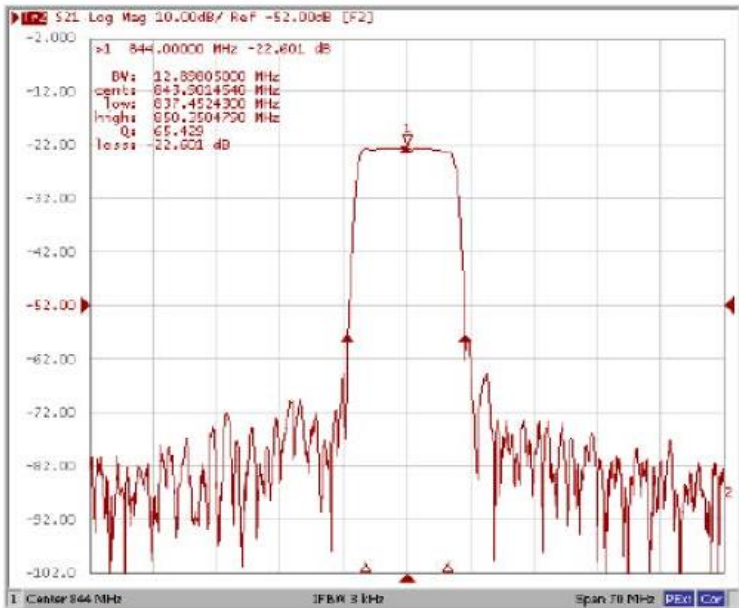
Bandwidth at -1.0 dB

Bandwidth at -3.0 dB



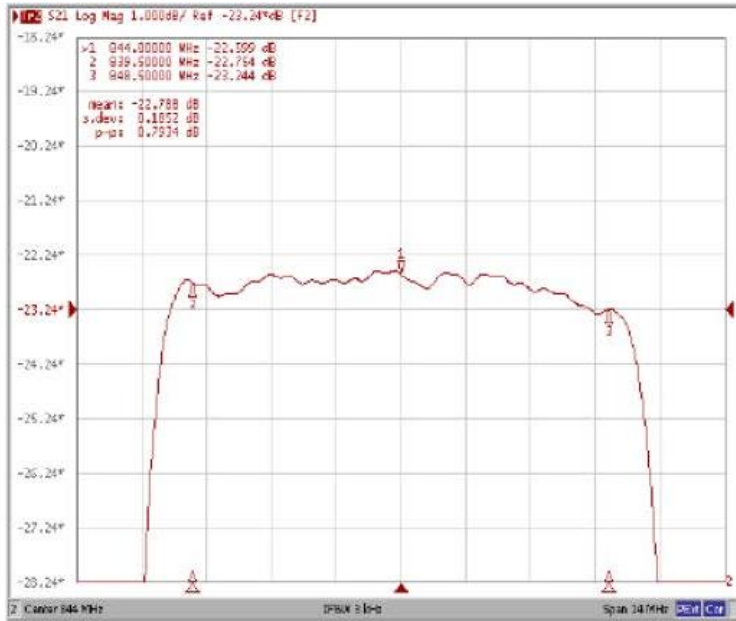
Bandwidth at -35.0 dB

Relative Attenuation(Fo+6.5MHz)

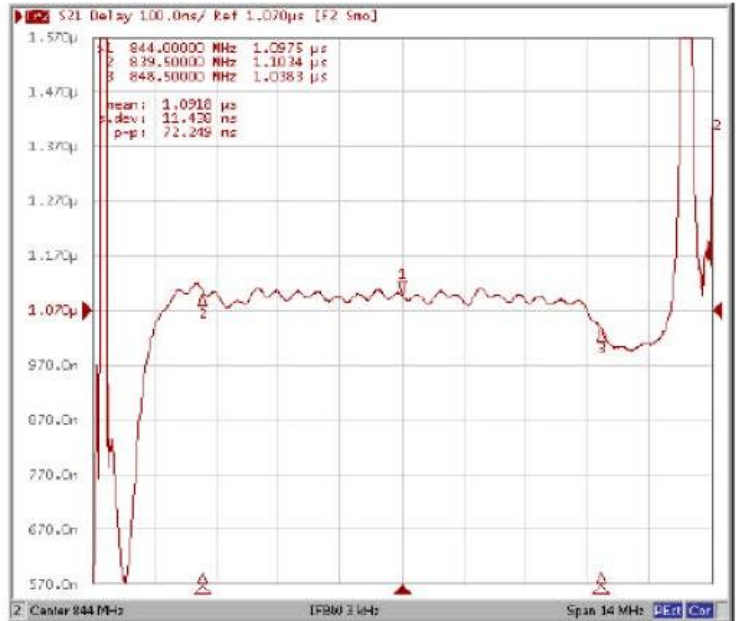




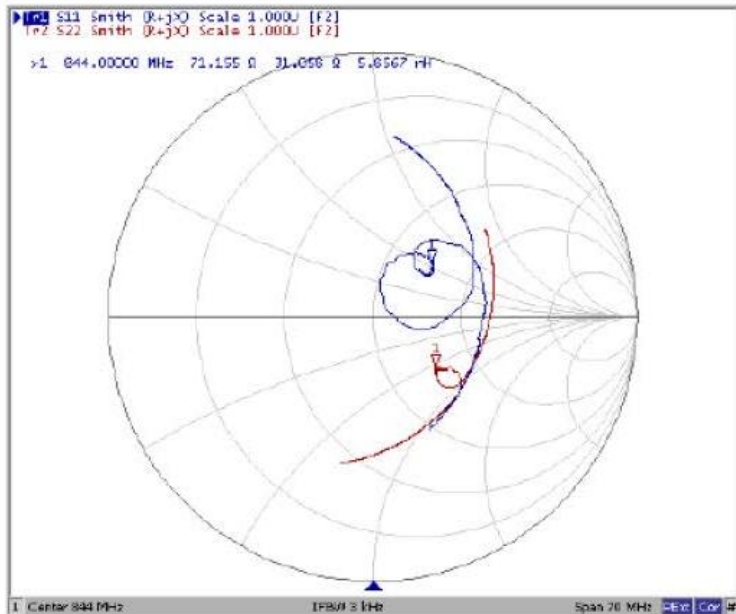
Ripple Variation Fo±4.5MHz



Group Delay Variation Fo±4.5MHz



Smith Chart



VSWR

