



85 MHz IF Saw Filter 19 MHz Bandwidth

Part Number: AM85S574



ANATECH ELECTRONICS INC
RF & Microwave Filters & Products

Parameters Description	Unit	Minimum	Typical	Maximum
Center Frequency (Fo)	MHz	-	85.1	-
Insertion Loss at Fo	dB	-	23.0	25.0
Passband Ripple within Fo ± 9.22 MHz	dB	-	0.55	0.95
Group Delay Variation within Fo ± 9.22 MHz	nsec	-	35	80
Absolute Delay at Fo	usec	-	1.95	-
Bandwidth at -1.0 dB	MHz	-	19.69	-
Bandwidth at -3.0 dB	MHz	19.90	20.02	-
Bandwidth at -25.0 dB	MHz	-	21.12	21.20
Bandwidth at -40.0 dB	MHz	-	21.39	-
Ultimate Rejection	dB	50	52	-
Temperature Coefficient	ppm/°C	-	-72	-

Parameters Description	Unit	Minimum	Typical	Maximum
Operation Temperature Range	°C	-20	-	+70
Storage Temperature Range	°C	-40	-	+80
Maximum DC Voltage	V	-	-	10
Maximum Input Power	dBm	-	-	10
Source Impedance (Single Ended) ₁	Ω	-	50	-
Load Impedance (Single Ended) ₁	Ω	-	50	-
Package Size and Type	20.0 x 9.8 x 1.8 mm		D1	



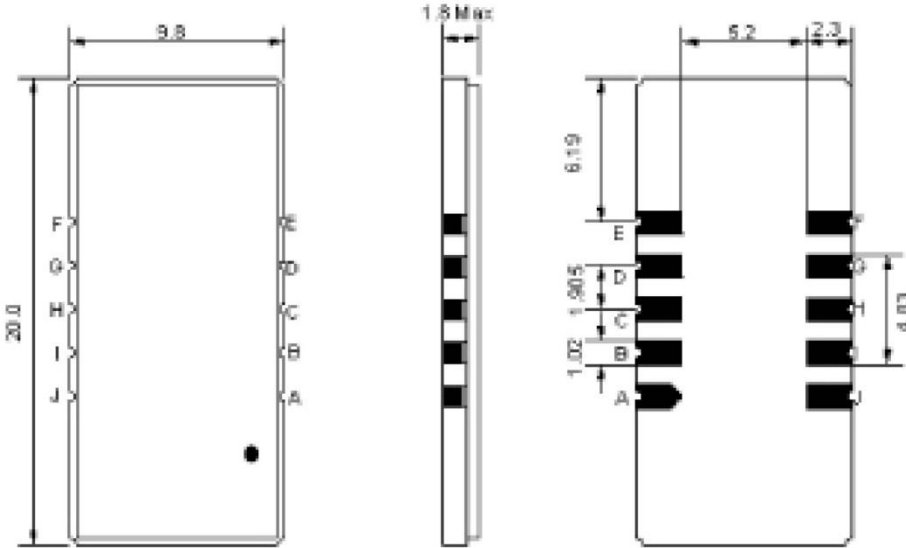
85 MHz IF Saw Filter 19 MHz Bandwidth

Part Number: AM85S574



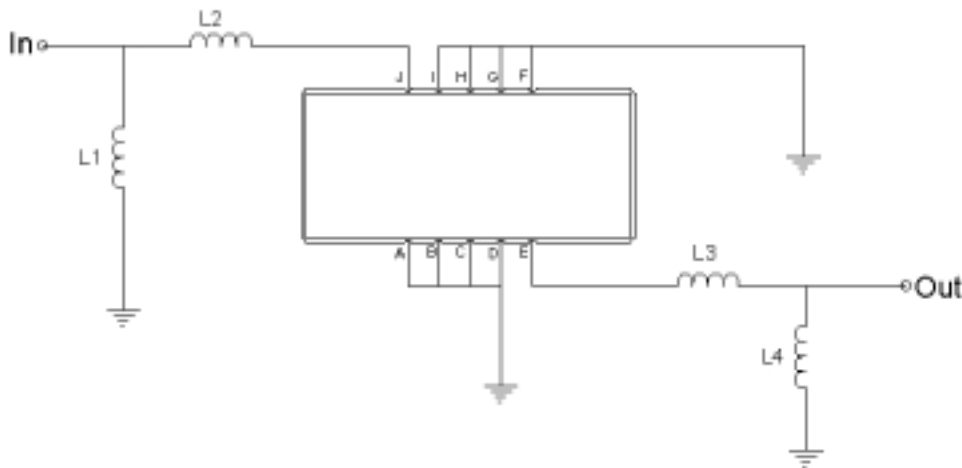
ANATECH ELECTRONICS INC
RF & Microwave Filters & Products

Outline Drawing:



Pin Description	
Ground	A B C D F G H I
Input	J
Output	E

Testing Environment:

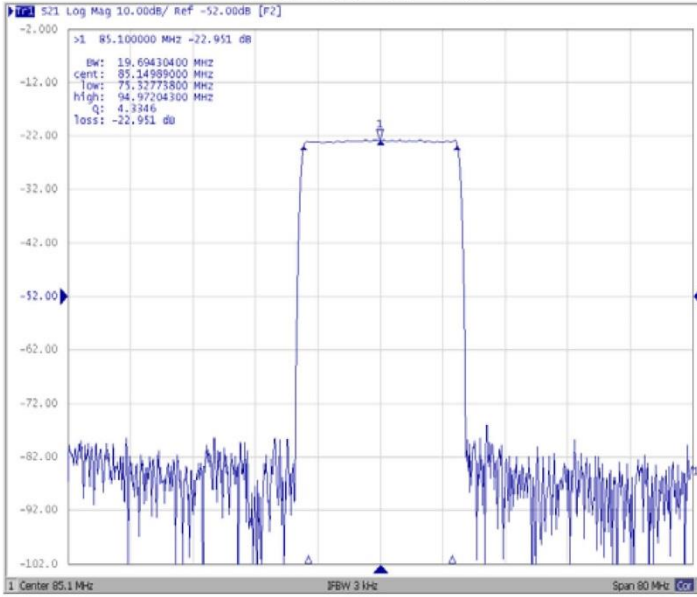


Pin Description	
Ground	L1 = 470 nH L2 = 56 nH
Input	L3 = 56 nH L4 = 470 nH
Source/Load Impedance	50 Ω

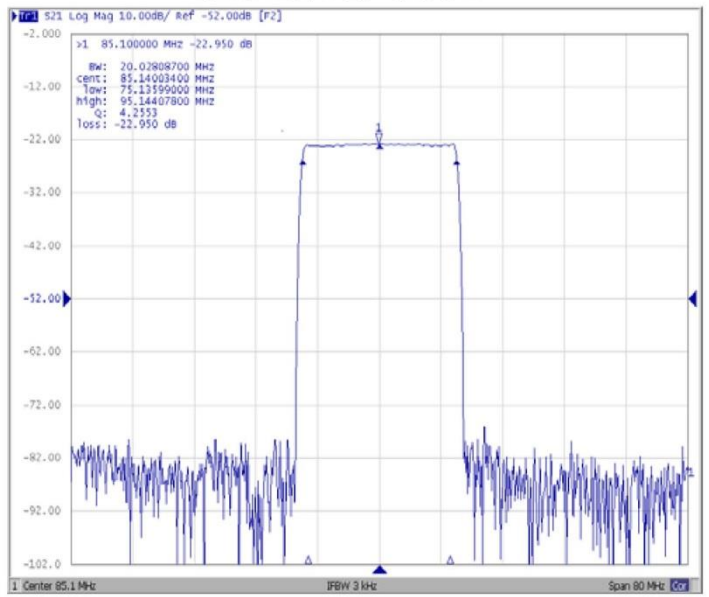


Frequency Response:

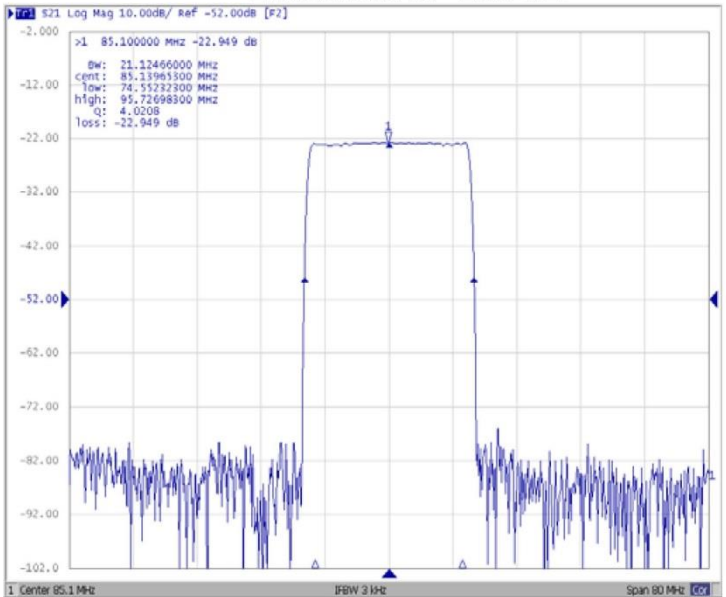
Bandwidth at -1.0 dB



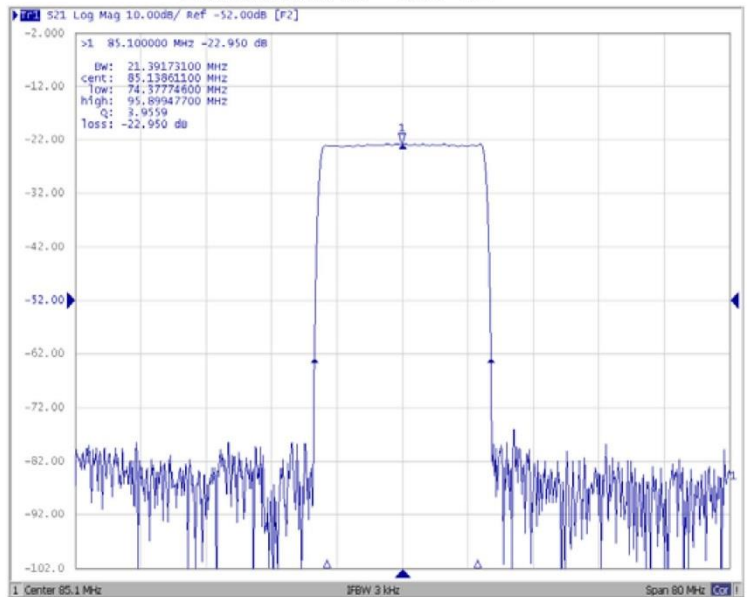
Bandwidth at -3.0 dB



Bandwidth at -25.0 dB



Bandwidth at -40.0 dB





85 MHz IF Saw Filter 19 MHz Bandwidth

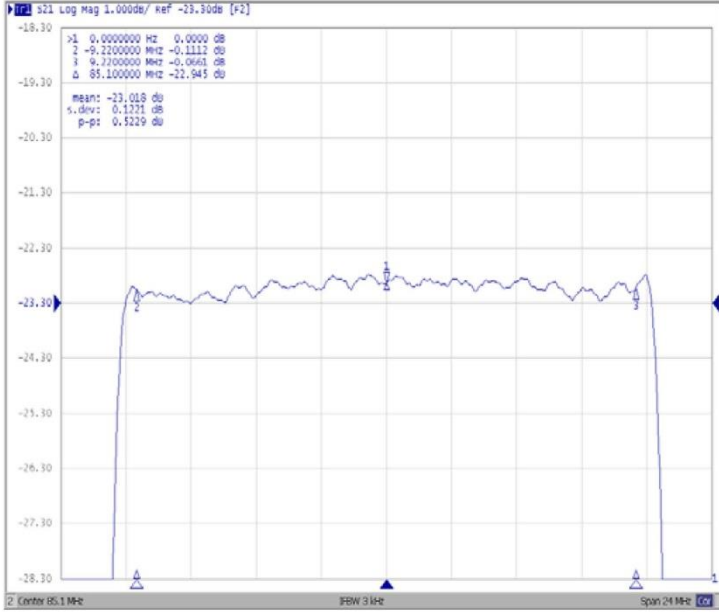
Part Number: AM85S574



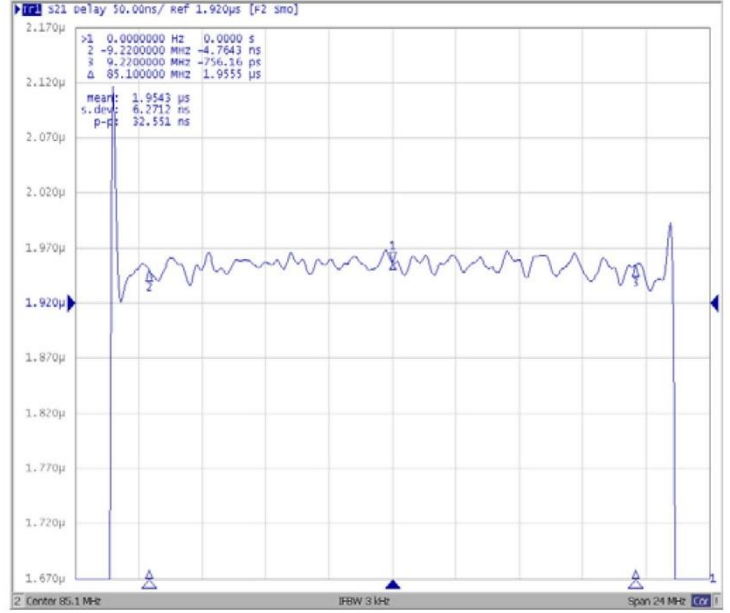
ANATECH ELECTRONICS INC
RF & Microwave Filters & Products

Frequency Response:

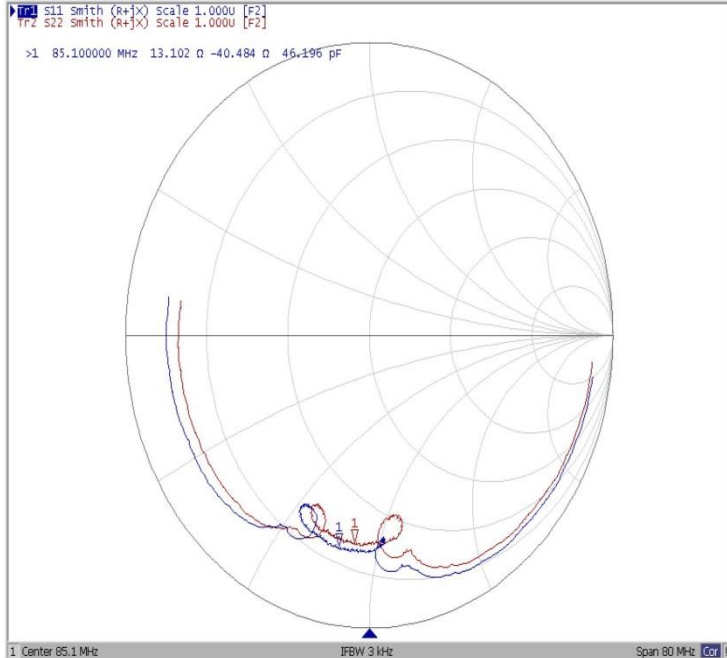
Ripple Variation Fo±9.22MHz



Group Delay Variation Fo±9.22MHz



Smith Chart



VSWR

