



85 MHz IF Saw Filter 20 MHz Bandwidth

Part Number: AM85S575



ANATECH ELECTRONICS INC
RF & Microwave Filters & Products

Parameters Description	Unit	Minimum	Typical	Maximum
Center Frequency (Fo)	MHz	-	85.0	-
Insertion Loss at Fo	dB	-	23.50	25.00
Passband Ripple within Fo ± 9.65 MHz	dB	-	0.55	0.90
Group Delay Variation within Fo ± 9.65 MHz	nsec	-	30	60
Absolute Delay at Fo	usec	-	1.64	-
Bandwidth at -1.0 dB	MHz	20.00	20.46	-
Bandwidth at -3.0 dB	MHz	-	20.88	-
Bandwidth at -25.0 dB	MHz	-	22.32	-
Bandwidth at -40.0 dB	MHz	-	22.66	22.90
Relative Attenuation:				
Lower Sidelobe	dB	48	52	-
Upper Sidelobe	dB	48	52	-
Temperature Coefficient	ppm/°C	-	-72	-

Parameters Description	Unit	Minimum	Typical	Maximum
Operation Temperature Range	°C	-20	-	+70
Storage Temperature Range	°C	-40	-	+80
Maximum DC Voltage	V	-	-	10
Maximum Input Power	dBm	-	-	10
Source Impedance (Single Ended) ₁	Ω	-	50	-
Load Impedance (Single Ended) ₁	Ω	-	50	-
Package Size and Type	13.3 x 6.5 x 1.8 mm		V	



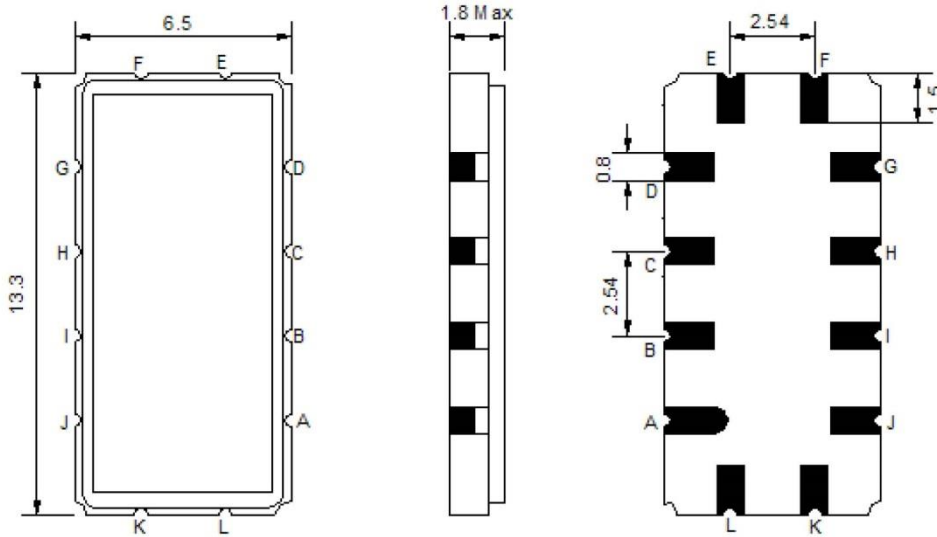
85 MHz IF Saw Filter 20 MHz Bandwidth

Part Number: AM85S575



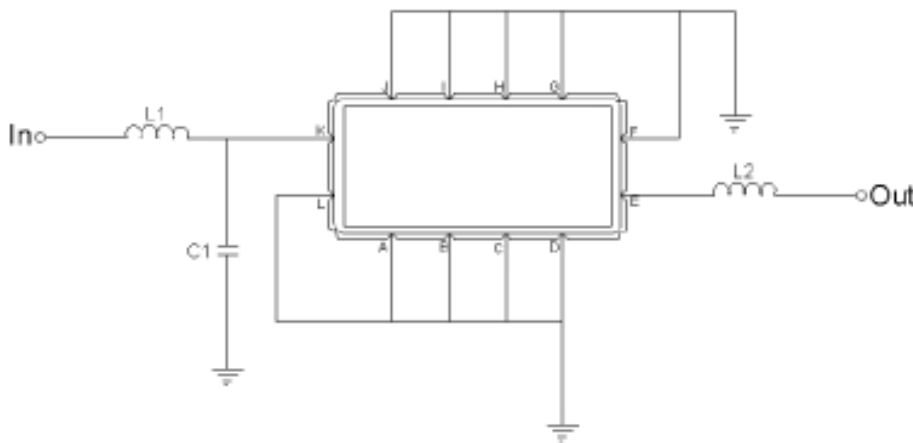
ANATECH ELECTRONICS INC
RF & Microwave Filters & Products

Outline Drawing:



Pin Description	
Ground	A B C D F G H I J L
Input	K
Output	E

Testing Environment:



Pin Description	
Ground	L1 = 120 nH C2 = 9 pF
Input	L2 = 120 nH
Source/Load Impedance	50 Ω



85 MHz IF Saw Filter 20 MHz Bandwidth

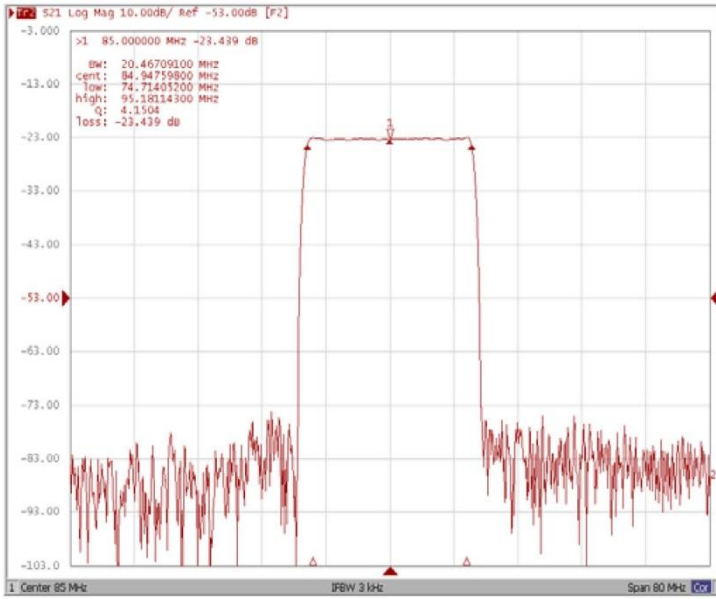
Part Number: AM85S575



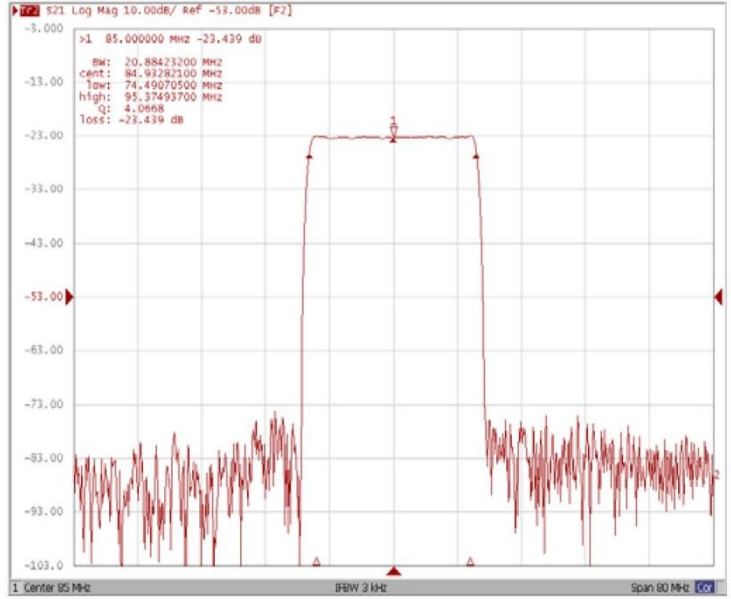
ANATECH ELECTRONICS INC
RF & Microwave Filters & Products

Frequency Response:

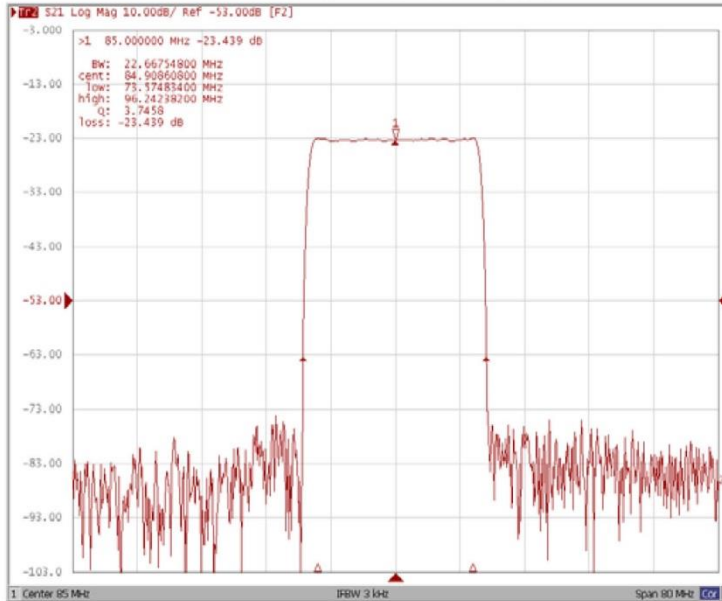
Bandwidth at -1.0 dB



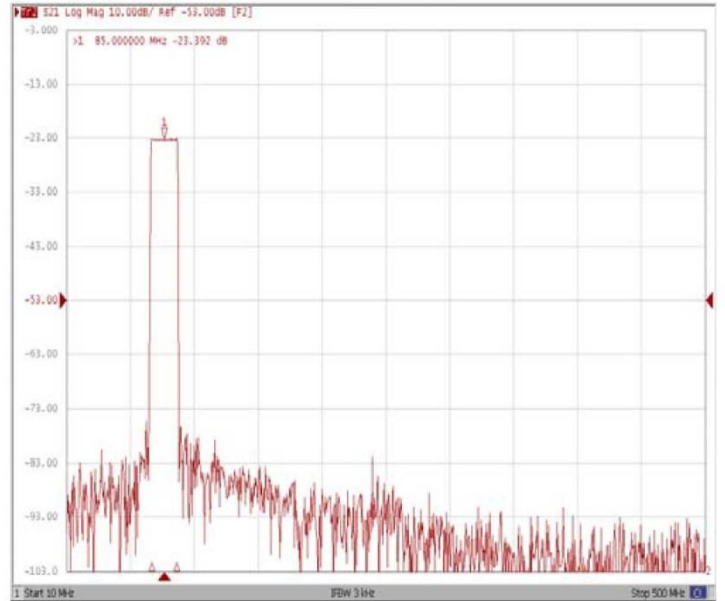
Bandwidth at -3.0 dB



Bandwidth at -40.0 dB



Wide-Band





85 MHz IF Saw Filter 20 MHz Bandwidth

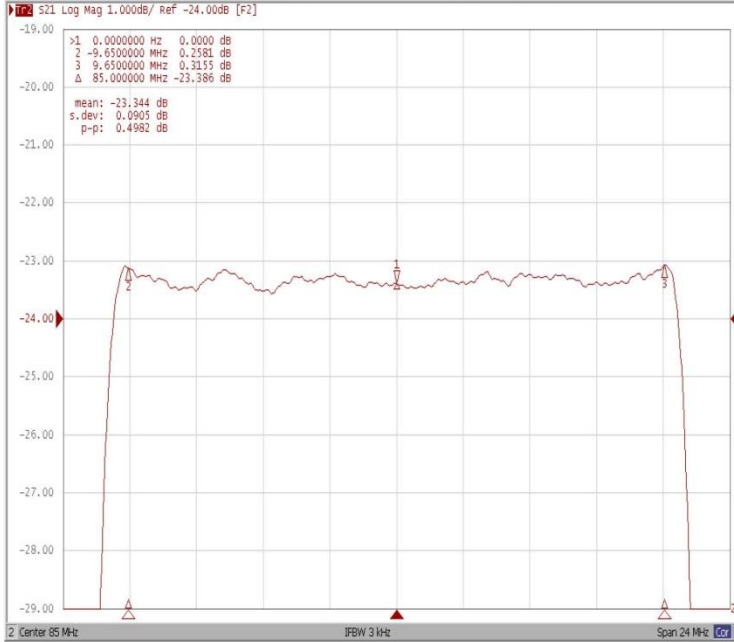
Part Number: AM85S575



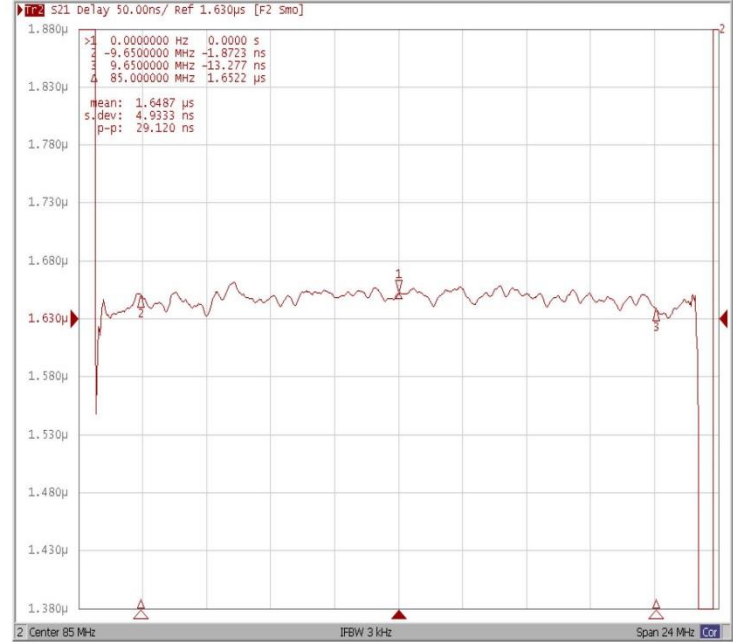
ANATECH ELECTRONICS INC
RF & Microwave Filters & Products

Frequency Response:

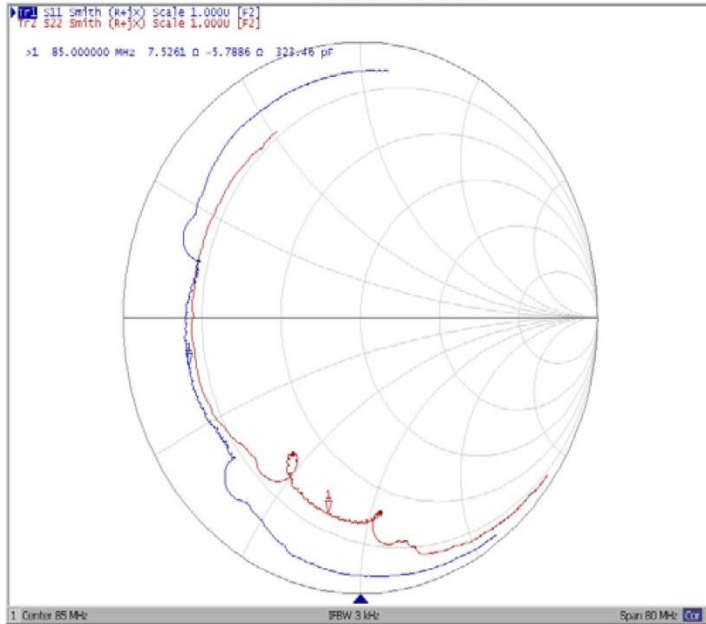
Ripple Variation Fo±9.65MHz



Group Delay Variation Fo±9.65MHz



Smith Chart



VSWR

