



868 MHz Remote Control, RF Saw Filter



ANATECH ELECTRONICS INC
RF & Microwave Filters & Products

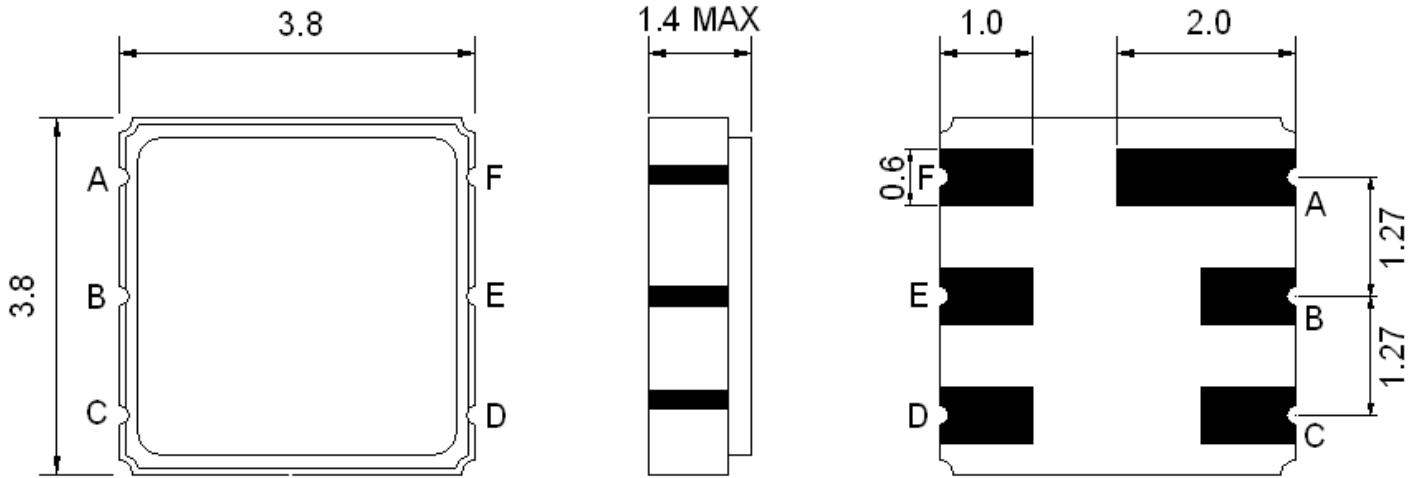
Part Number: AM868S519

Parameters Description	Unit	Minimum	Typical	Maximum
Center Frequency (Fo)	MHz	-	866.3	-
Insertion Loss within 868 ~ 878.78 MHz	dB	-	2.7	4.2
Relative Passband:				
868.0 ~ 868.78 MHz	dB	-	1.0	3.0
867.9 ~ 868.88 MHz	dB	-	1.5	6.0
3dB Bandwidth	kHz	-	1500	-
Relative Attenuation:				
10 ~ 700 MHz	dB	50	55	-
700 ~ 830 MHz	dB	40	45	-
830 ~ 850 MHz	dB	35	40	-
850 ~ 865.02 MHz	dB	25	28	-
871 ~ 874.5 MHz	dB	15	20	-
874.5 ~ 883 MHz	dB	22	26	-
883 ~ 900 MHz	dB	30	35	-
900 ~ 1000 MHz	dB	40	45	-

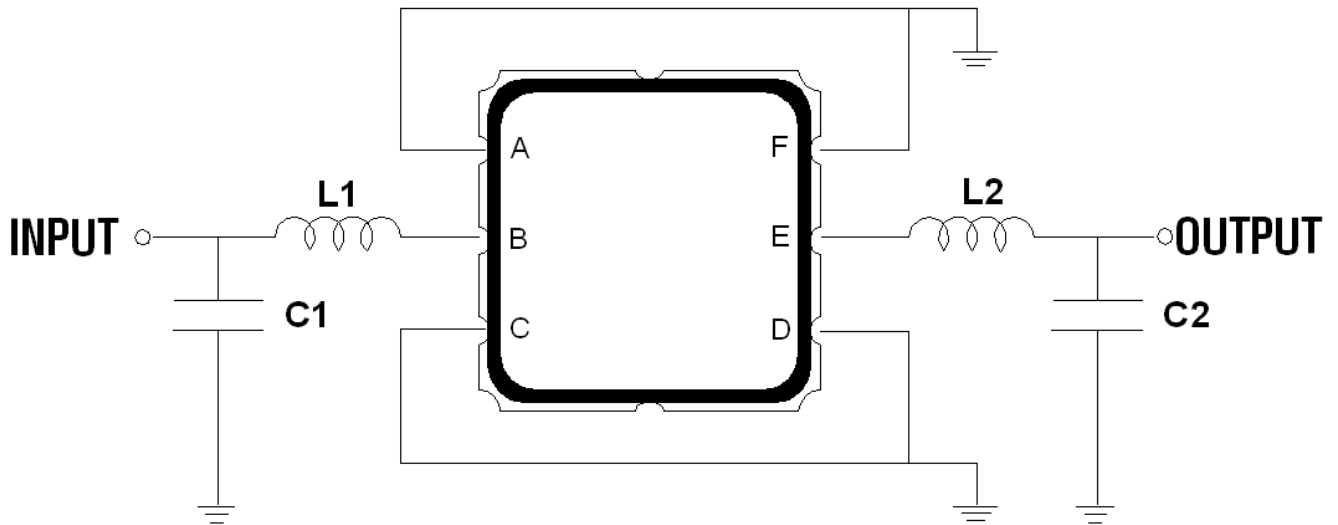
Parameters Description	Unit	Minimum	Typical	Maximum
Operation Temperature Range	°C	-45	-	+90
Storage Temperature Range	°C	-40	-	+85
Maximum DC Voltage	V	-	-	0
Maximum Input Power	dBm	-	-	0
Source Impedance (Single Ended) ₁	//pF	-	117/3.7	-
Load Impedance (Single Ended) ₁	//pF	-	117/3.7	-
Package Size and Type	3.8 x 3.8 x 1.4 mm P			



Outline Drawing:



Testing Environment:



L1=15nH C1=3.3pF L2=15nH C2=3.3pF

Source/Load Impedance: 50 Ω



Response Plot:

