



Electrical specifications

Center Frequency: 881 MHz
Bandwidth: 25 MHz
Input / Output Impedance: 50 Ohms
Passband: 869 – 894 MHz
Passband Insertion Loss: 1.6 dB max
Passband Ripple: 0.5 dB max / 3.75 MHz
Passband Return Loss: @ Port 1: 10.0 dB min
@ Port 2: 10.0 dB min
Rejection: 729-754 MHz 40.0 dB 35.0 dB min
Rejection 2: 824-849 MHz 17.0 dB 14.0 dB min
Power Handling: 2 W max

Mechanical

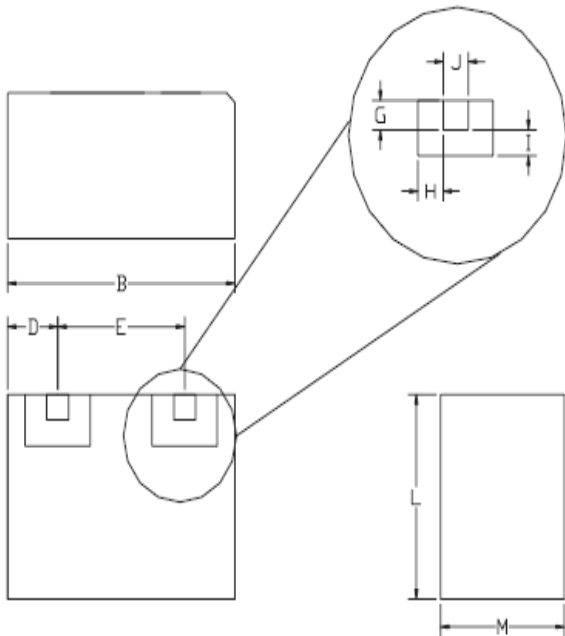
Mounting Method: SMT
Dimensions: 14.74 x 12.32 x 6 mm

Environmental

Operating Temperature: -30°C to +70°C
Storage Temperature: -50°C to +90°C



Mechanical Drawing:



Dim	Nominal (mm)	Tolerance (mm) +/- or max
A		
B	14.74	max
C		
D	1.61	0.13
E	11.38	0.13
F		
G	1.02	0.13
H	0.64	0.13
I	0.64	0.13
J	1.02	0.13
K		
L	12.32	max
M	6.00	max



Response Plot:

