



ANATECH ELECTRONICS INC
RF & Microwave Filters & Products

881 MHz CDMA Balanced RF-Rx Saw Filter

Part Number: AM881S526

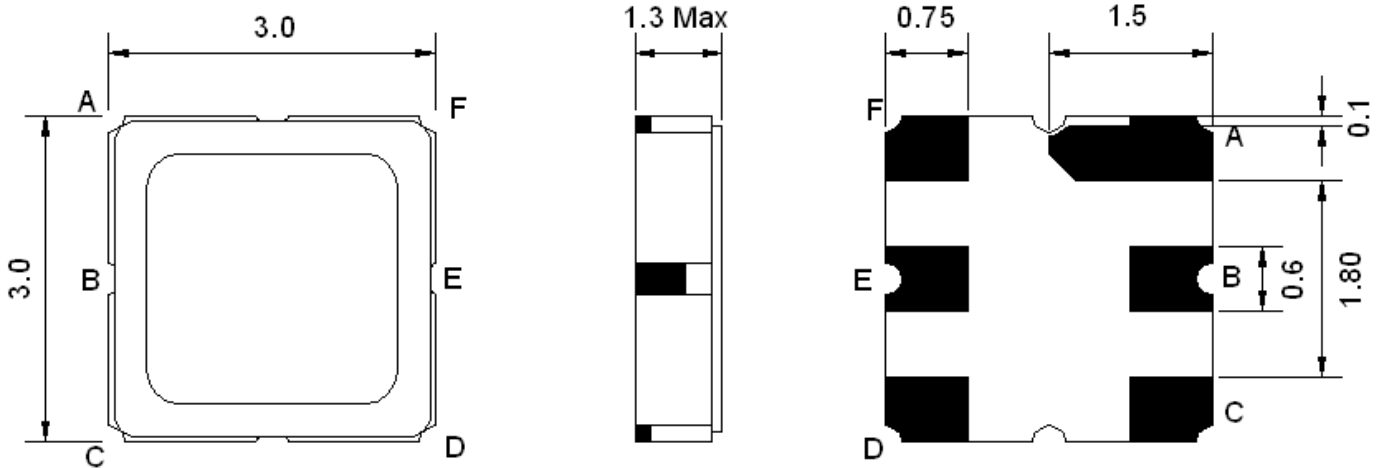


Parameters Description	Unit	Minimum	Typical	Maximum
Center Frequency (Fo)	MHz	-	881.5	-
Insertion Loss within 869 ~ 894 MHz	dB	-	2.2	3.0
Amplitude Ripple within 869 ~ 894 MHz	dB _{p-p}	-	0.8	1.5
VSWR within 869 ~ 894 MHz	-	-	1.8	2.2
Attenuation:				
DC ~ 824 MHz	dB	50	60	-
824 ~ 849 MHz	dB	35	44	-
924 ~ 970 MHz	dB	25	30	-
970 ~ 1300 MHz	dB	50	65	-
1300 ~ 2000 MHz	dB	40	55	-
2000 ~ 3000 MHz	dB	30	50	-

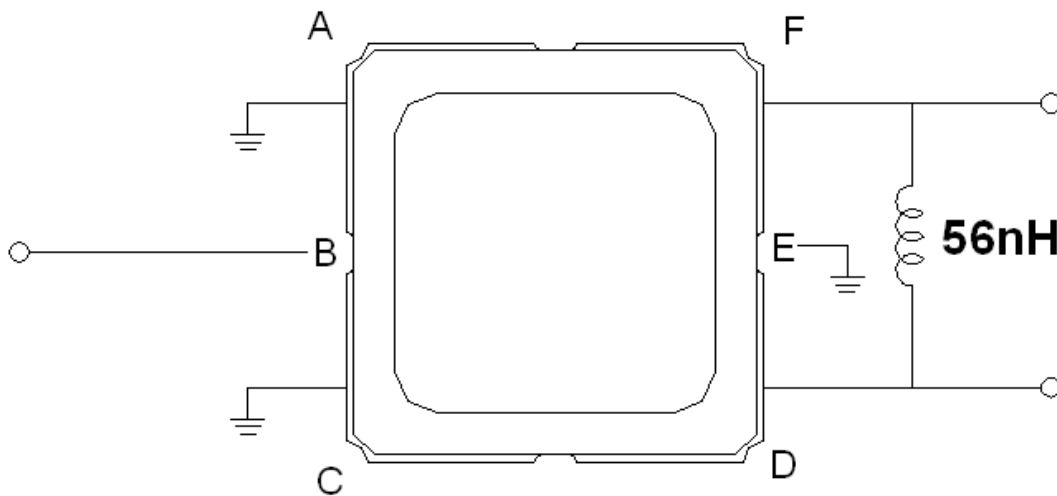
Parameters Description	Unit	Minimum	Typical	Maximum
Operation Temperature Range	°C	-30	-	+80
Storage Temperature Range	°C	-40	-	+85
Maximum DC Voltage	V	-	-	5
Maximum Input Power	dBm	-	-	5
Source Impedance (Single Ended) ₁	Ω	-	50	-
Load Impedance (Balanced Ended) ₁		-	200//56nH	-
Package Size and Type		3.0 x 3.0 x 1.3 mm		M3



Outline Drawing:



Testing Environment:



Source/Load Impedance: 50 Ω



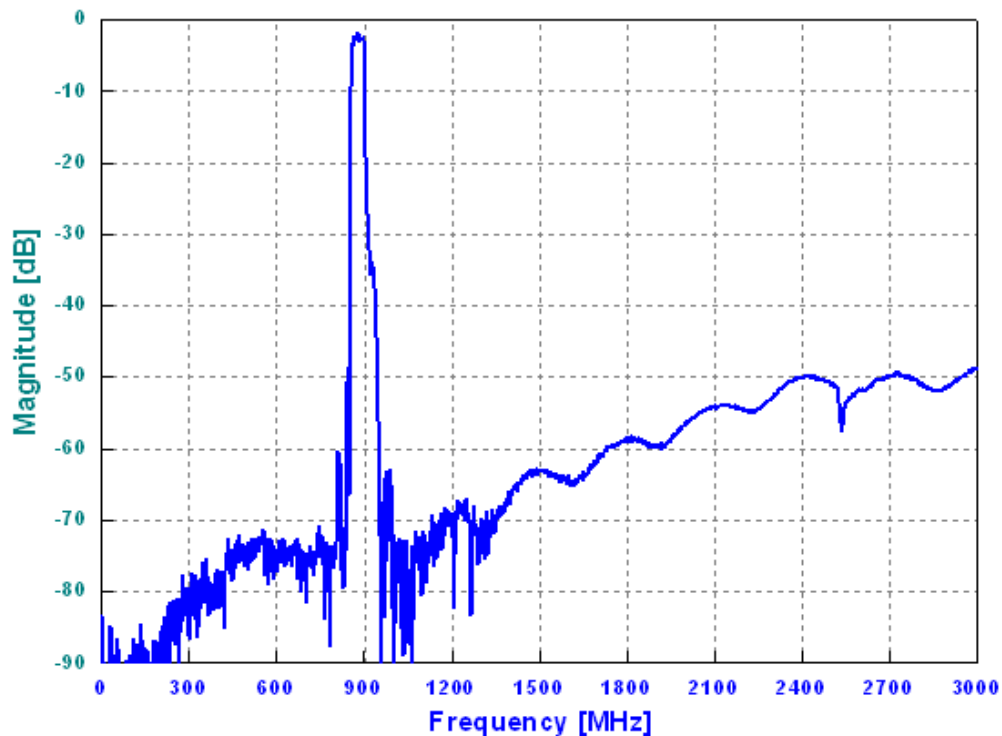
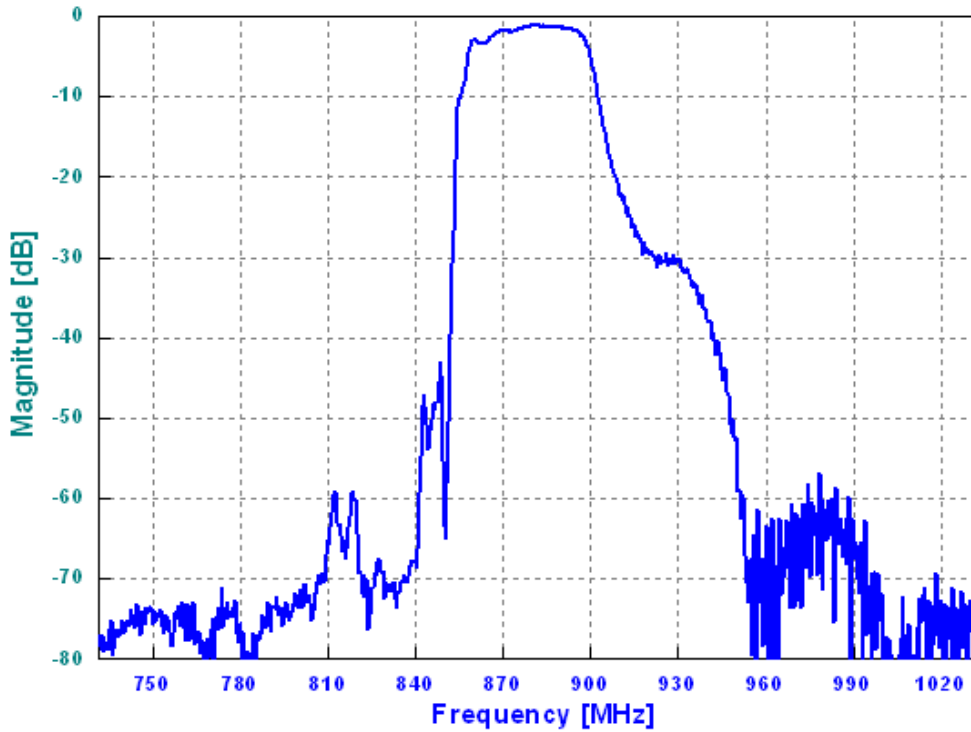
ANATECH ELECTRONICS INC
RF & Microwave Filters & Products

881 MHz CDMA Balanced RF-Rx Saw Filter

Part Number: AM881S526



Response Plot:





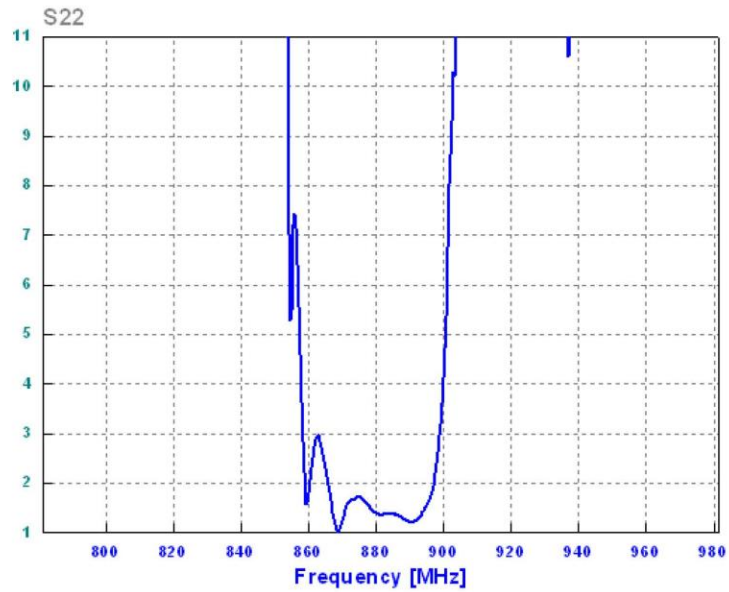
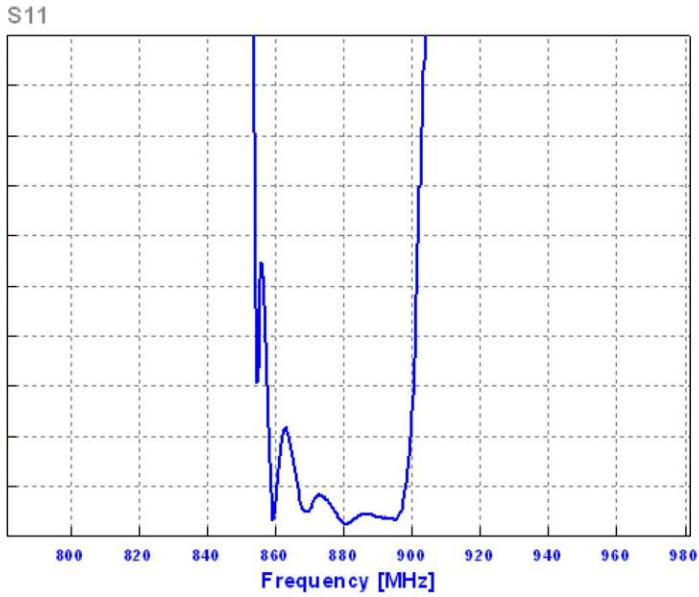
ANATECH ELECTRONICS INC
RF & Microwave Filters & Products

881 MHz CDMA Balanced RF-Rx Saw Filter

Part Number: AM881S526



VSWR



Smith Chart

