

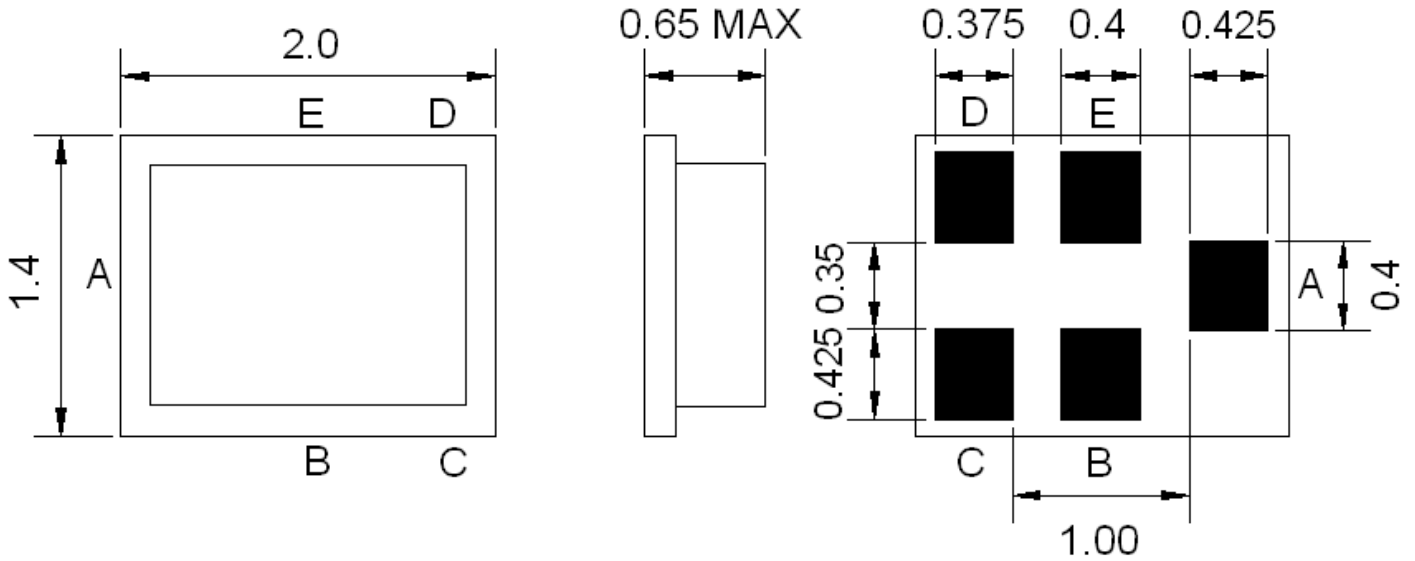


Parameters Description	Unit	Minimum	Typical	Maximum
Center Frequency (Fo)	MHz	-	881.5	-
Insertion Loss within 869 ~ 894 MHz	dB	-	2.3	2.9
Amplitude Ripple within 869 ~ 894 MHz	dB _{p-p}	-	0.8	1.5
VSWR within 869 ~ 894 MHz	-	-	1.8	1.5
Attenuation:				
DC ~ 824 MHz	dB	50	64	-
824 ~ 849 MHz	dB	45	60	-
915 ~ 960 MHz	dB	23	29	-
960 ~ 6000 MHz	dB	14	18	-
Output Amplitude Balance (S ₃₁ /S ₂₁)	dB	-1.0	-	1.0
Output Phase Balance ((S ₃₁) – (S ₂₁) + 180°)	degree	-5.0	-	5.0

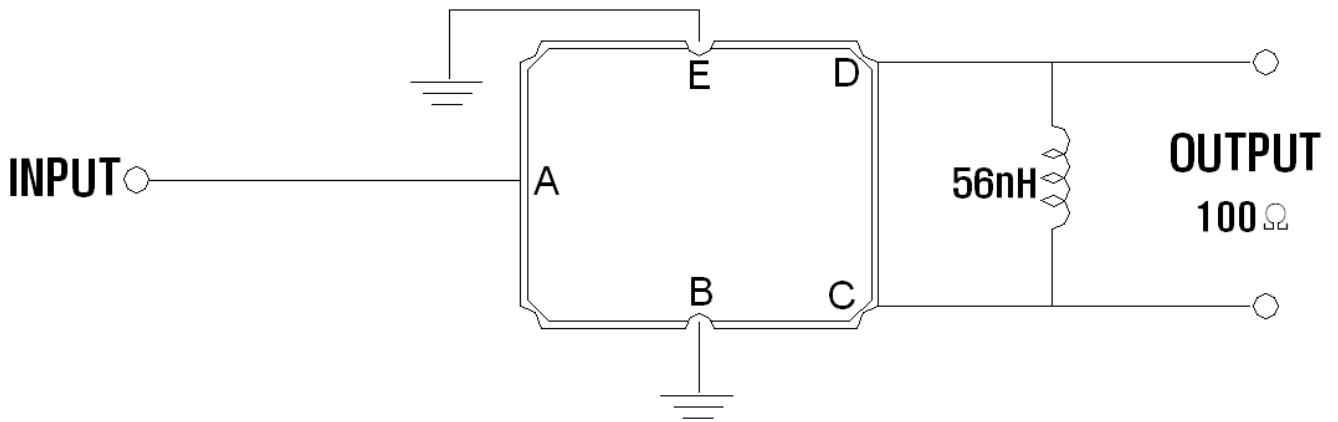
Parameters Description	Unit	Minimum	Typical	Maximum
Operation Temperature Range	°C	-30	-	+80
Storage Temperature Range	°C	-40	-	+85
Maximum DC Voltage	V	-	-	5
Maximum Input Power	dBm	-	-	15
Source Impedance (Single Ended) ₁	Ω	-	50	-
Load Impedance (Balanced Ended) ₁		-	100//56nH	-
Package Size and Type		2.0 x 1.4 x 0.65 mm		H1



Outline Drawing:

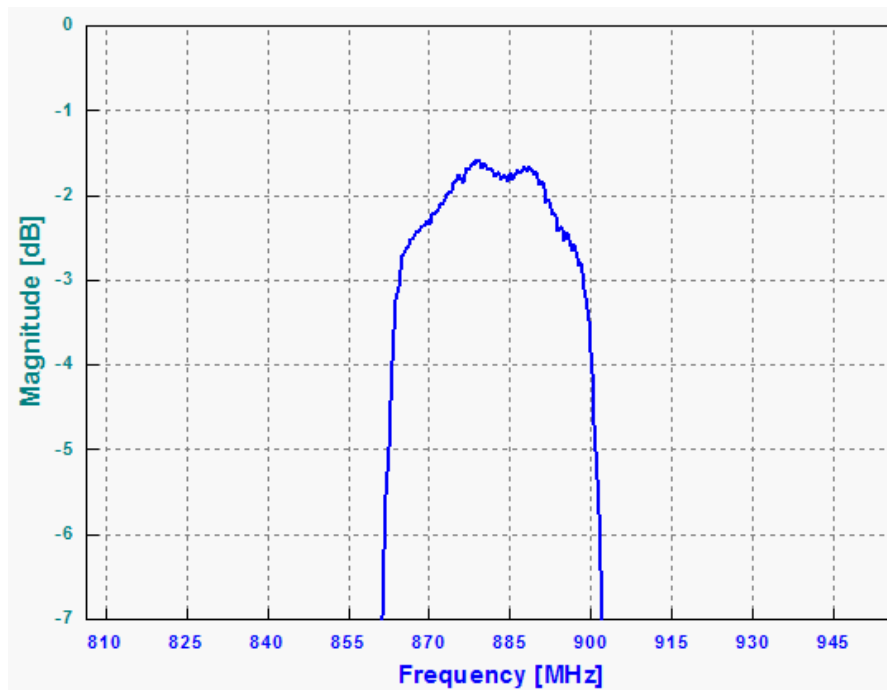
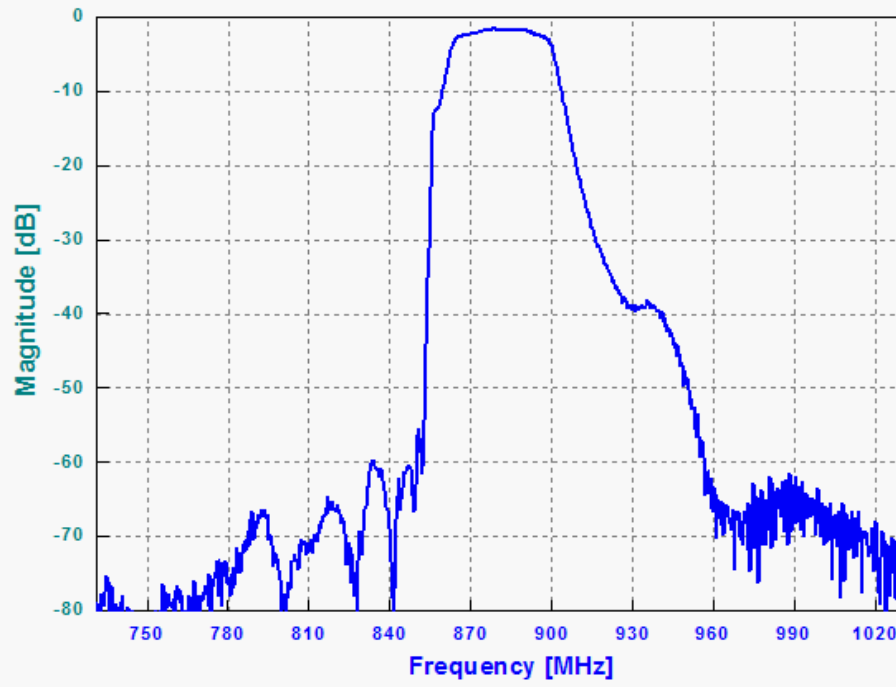


Testing Environment:





Response Plot:





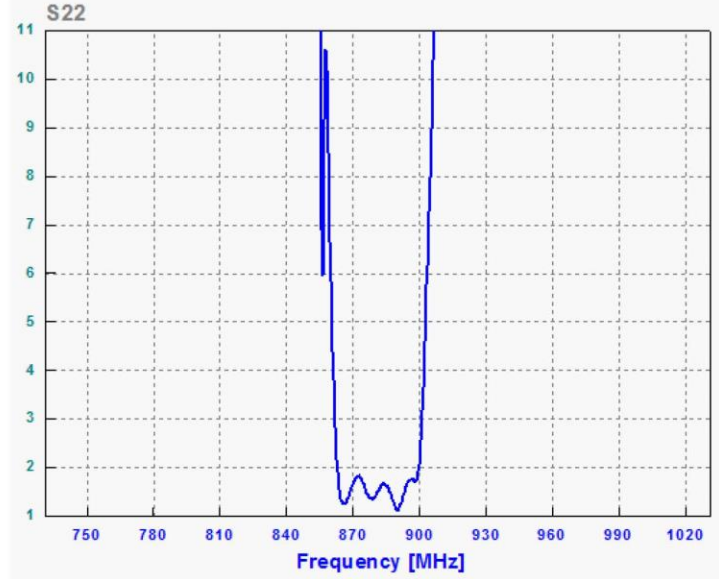
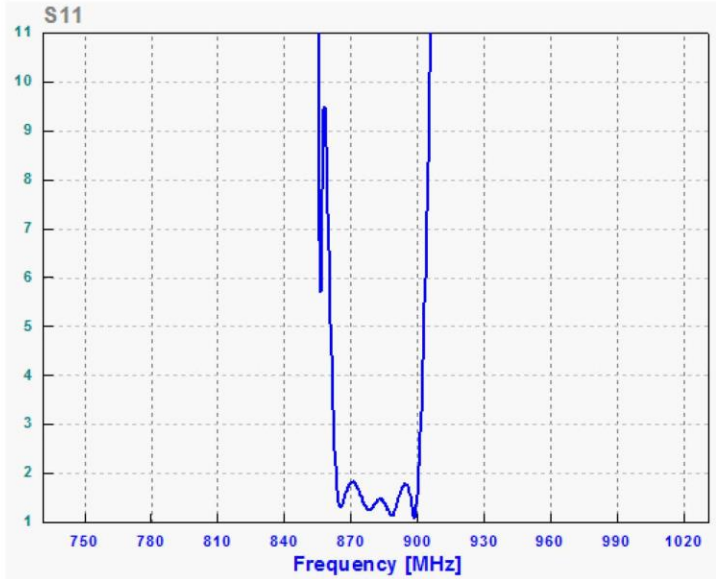
ANATECH ELECTRONICS INC
RF & Microwave Filters & Products

881 MHz CDMA Balanced RF-Rx Saw Filter

Part Number: AM881S527



VSWR



Smith Chart

