



# 880-915 MHz / 925-960 MHz MonoBlock Ceramic Duplexer



**ANATECH ELECTRONICS INC**  
RF & Microwave Filters & Products

**Part Number: AM897-942D1171**

Parameter	Frequency (MHz)	Specification at 25°C
<b>Low Band Response (S21)</b>		
Pass Band Insertion Loss	880-915	-3.80
Pass Band Ripple	880-915	2.90
Pass Band Return Loss at Port 2	880-915	-10.00
Pass Band Return Loss at Ant	880-915	-10.00
Attenuation	920	-14.00
	925-960	-40.00
<b>High Band Response (S13)</b>		
Pass Band Insertion Loss	925-960	-3.80
Pass Band Ripple	925-960	2.90
Pass Band Return Loss at Port 3	925-960	-10.00
Pass Band Return Loss at Ant	925-960	-10.00
Attenuation	920	-14.00
	880-915	-40.00
<b>Isolation (S32)</b>		
Isolation at Low Band	880-915	-45.00
	920	-33.00
Isolation at High Band	925-960	-45.00
Power into any port	3 Watt Max	
<b>Environmental Specifications</b>		
Operating Temperature	-40°C to +85°C	
Storage Temperature	-50°C to +95°C	



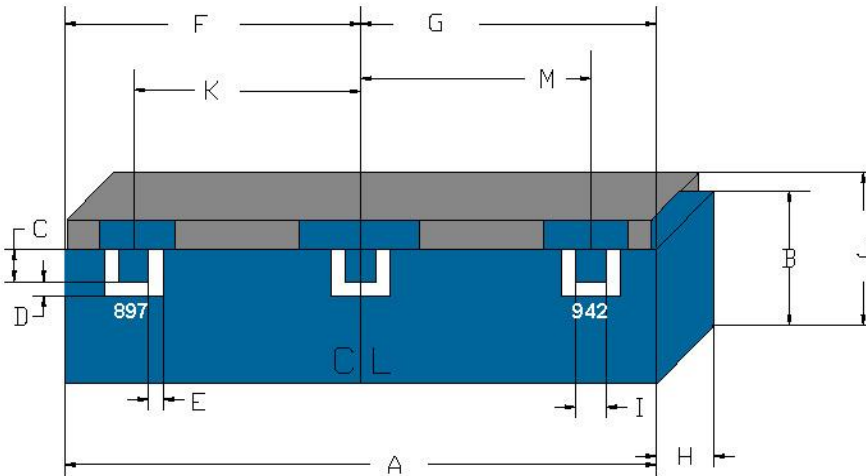
# 880-915 MHz / 925-960 MHz MonoBlock Ceramic Duplexer



**ANATECH ELECTRONICS INC**  
RF & Microwave Filters & Products

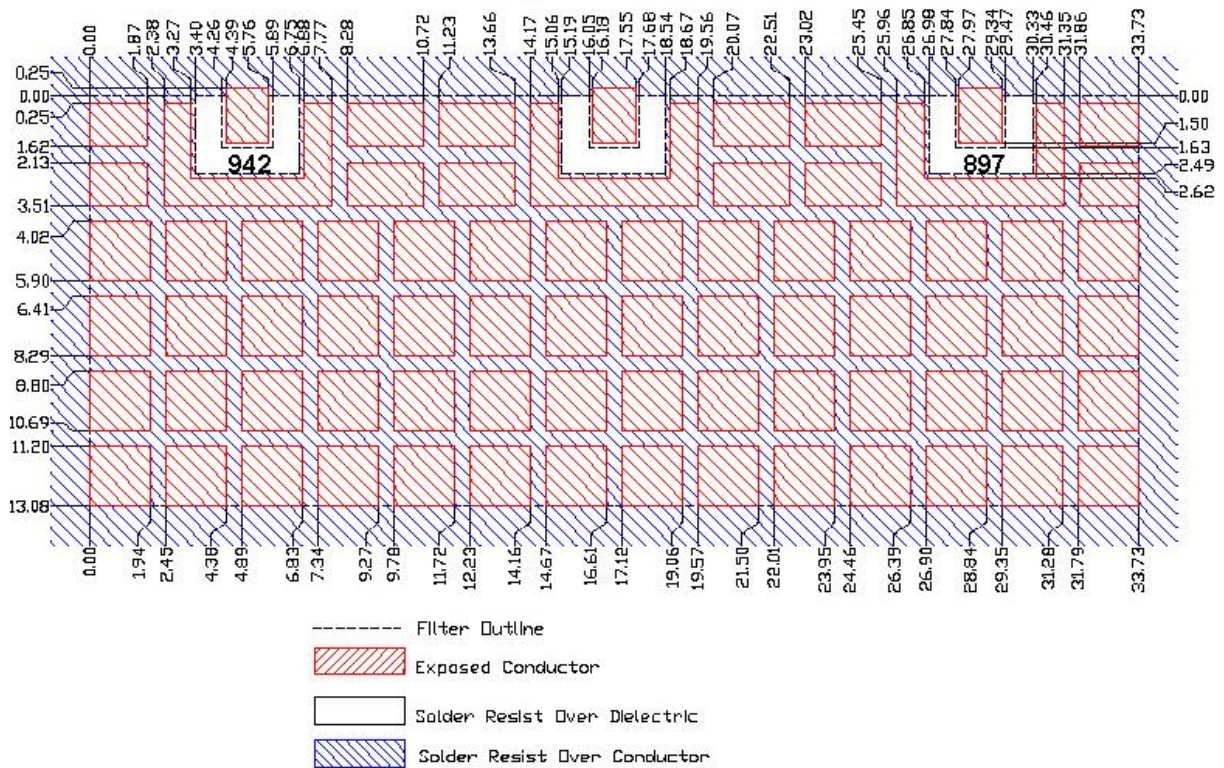
**Part Number: AM897-942D1171**

## Mechanical Drawing:



Dimension	Nominal (mm)	Tolerance (mm) +/-
A	33.73	0.27
B	13.08	max
C	1.63	0.13
D	0.86	0.13
E	0.86	0.13
F	16.87	0.13
G	16.87	0.13
H	6.56	max
I	1.63	0.13
J	14.00	max
K	11.79	0.13
M	11.79	0.13

## PCB Layout:





# 880-915 MHz / 925-960 MHz MonoBlock Ceramic Duplexer



**ANATECH ELECTRONICS INC**  
RF & Microwave Filters & Products

**Part Number: AM897-942D1171**

## Response Plot:

