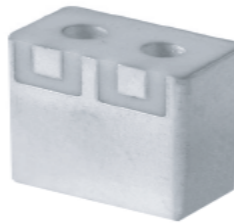




**Electrical specifications**

**Center Frequency:** 915 MHz  
**Bandwidth:** 26 MHz  
**Input / Output Impedance:** 50 Ohms  
**Passband:** 902-928 MHz  
**Passband Insertion Loss:** 2.0 dB max spec.  
**Passband Ripple:** 1.0 dB max  
**Passband Return Loss:** 10.0 dB min spec.  
**Rejection:** 710 MHz 30.0 dB min spec.  
**Power Handling:** 1W



**Mechanical**

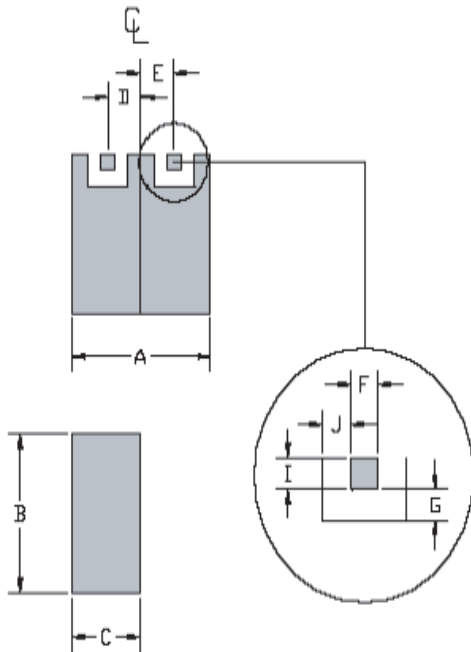
**Mounting Method:** SMT  
**Dimensions:** 8.8 x 7.9 x 4.5 mm

**Environmental**

**Operating Temperature:** -40 C to +85 C  
**Storage Temperature:** -50 C to +90 C

**This product is RoHs compliant.**

**Mechanical Drawing**



Dim	Nominal (mm)	Tolerance (mm) +/- or max
A	7.9	max
B	8.8	max
C	4.5	max
D	1.78	0.127
E	1.78	0.127
F	1.27	0.127
G	0.77	0.127
I	1.78	0.127
J	0.77	0.127



**ANATECH ELECTRONICS INC**  
RF & Microwave Filters & Products

# ISM900 Ceramic BPF

## Part Number: AM915B693



### Response Plot:

