



942 MHz EGSM, Balanced RF Saw Filter



ANATECH ELECTRONICS INC
RF & Microwave Filters & Products

Part Number: AM942S541

Parameters Description	Unit	Minimum	Typical	Maximum
Center Frequency (Fo)	MHz	-	942.5	-
Insertion Loss within 925.0 ~ 960.0 MHz	dB	-	2.5	3.0
Amplitude Ripple within 925.0 ~ 960.0 MHz	dB _{p-p}	-	0.3	1.0
VSWR within 925.0 ~ 960.0 MHz	-	-	1.5	2.0
Symmetry in band within 925.0 ~ 960.0 MHz				
Output Amplitude Balance (S31 / S21)	dB	-1.3	0	1.2
Output Phase Balance (∠s31) – (∠S21) + 180)	Deg	-10	0	10
Attenuation:				
DC ~ 880.0 MHz	dB	50	52	-
880.0 ~ 905.0 MHz	dB	30	44	-
905.0 ~ 915.0 MHz	dB	10	27	-
980.0 ~ 1050 MHz	dB	21	27	-
1050 ~ 6000 MHz	dB	50	54	-

Parameters Description	Unit	Minimum	Typical	Maximum
Operation Temperature Range	°C	-30	-	+85
Storage Temperature Range	°C	-40	-	+85
Maximum DC Voltage	V	-	-	0
Maximum Input Power	dBm	-	-	15
Source Impedance (Single Ended) ₁	Ω	-	50	-
Load Impedance (Balanced Ended) ₁	Ω/nH	-	150//72	-
Package Size and Type	2.5 x 2.0 x 1.0 mm L1			



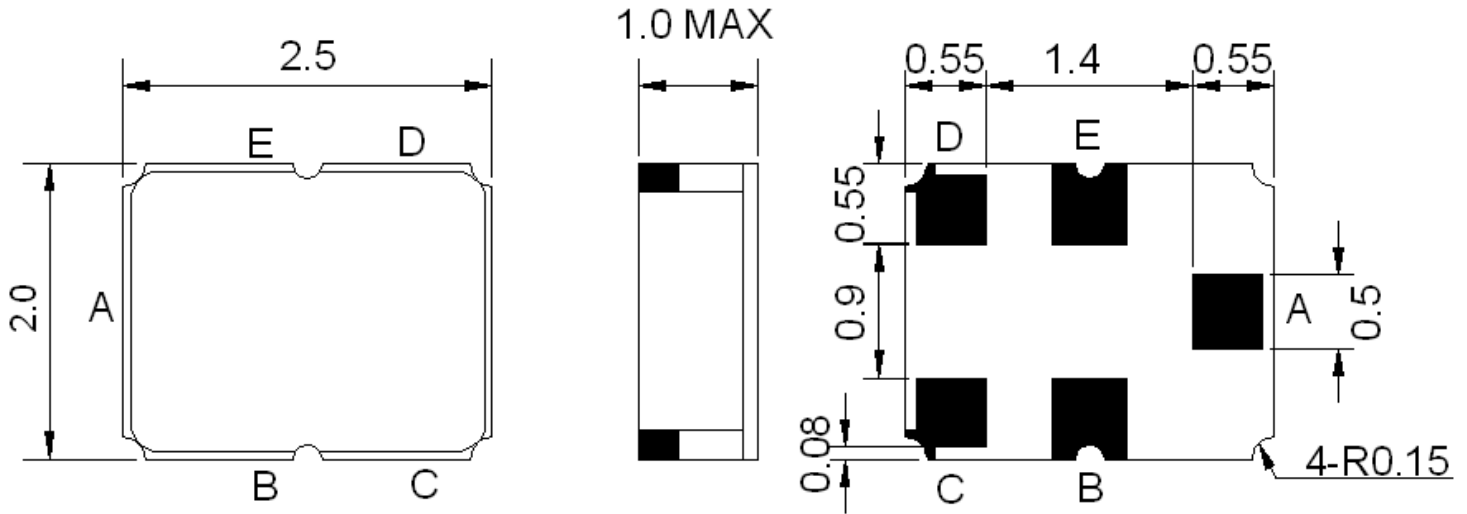
942 MHz EGSM, Balanced RF Saw Filter

ANATECH ELECTRONICS INC
RF & Microwave Filters & Products

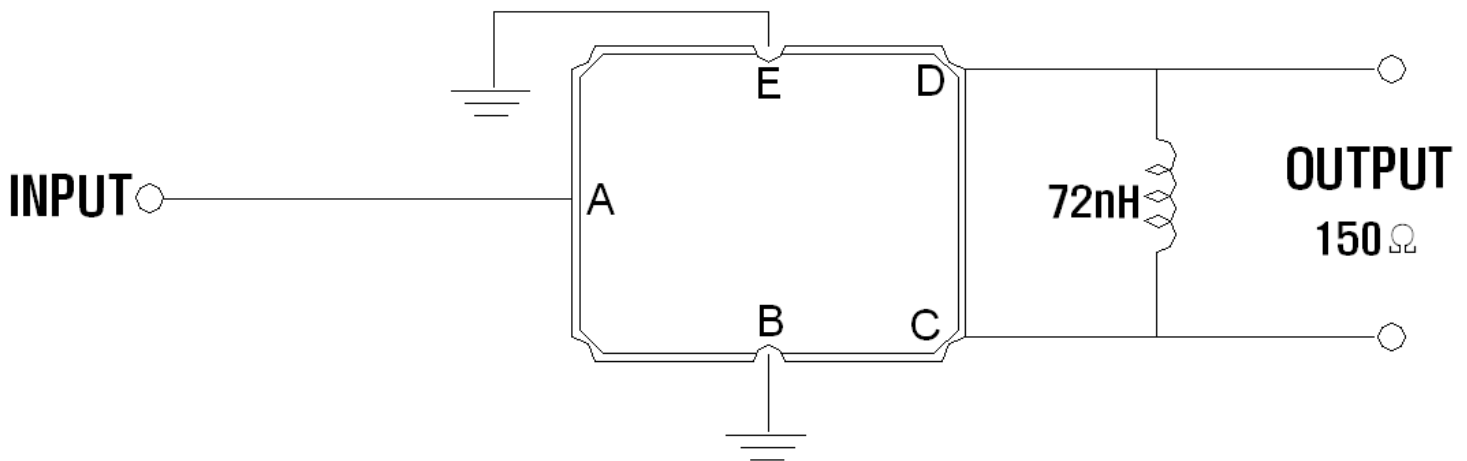
Part Number: AM942S541



Outline Drawing:



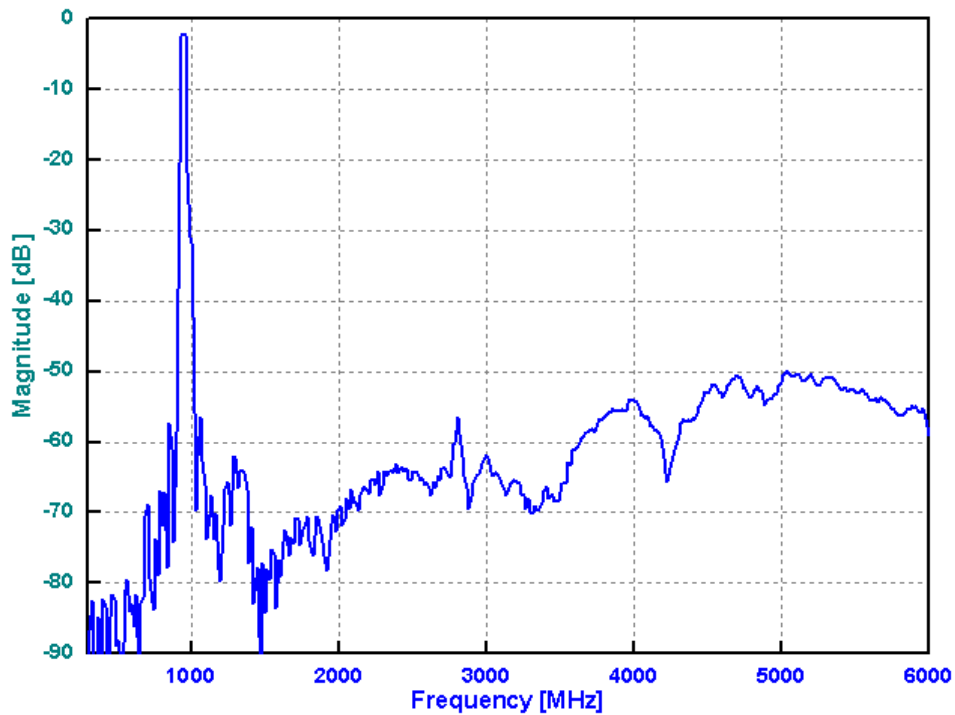
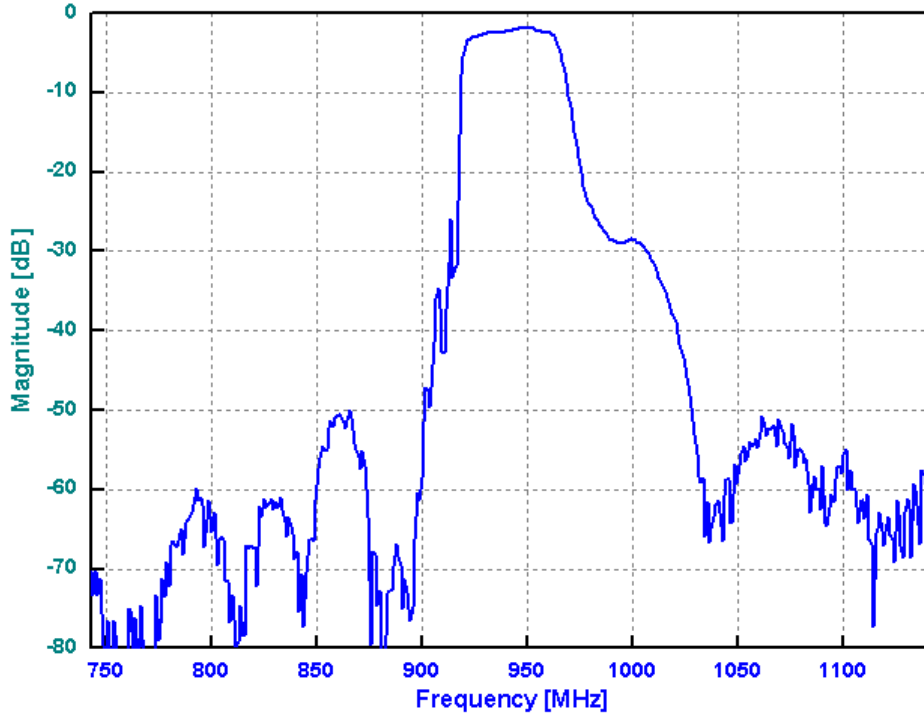
Testing Environment:



Source Impedance: 50Ω
Load Impedance: 150Ω//72nH

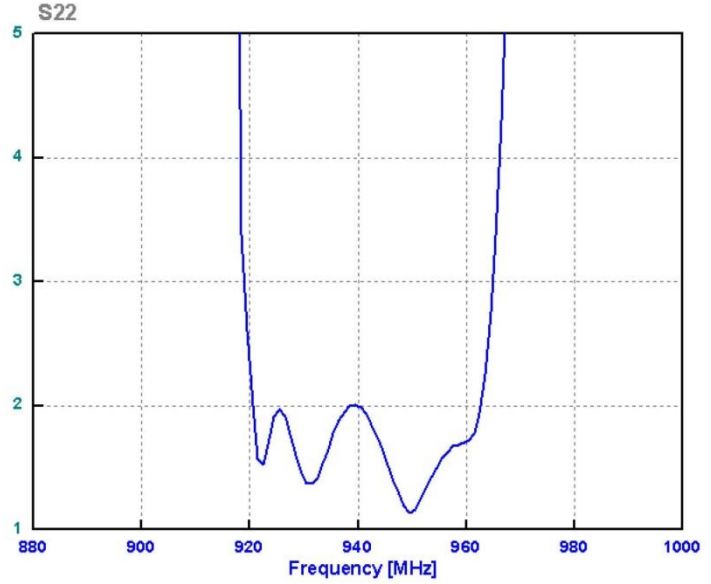
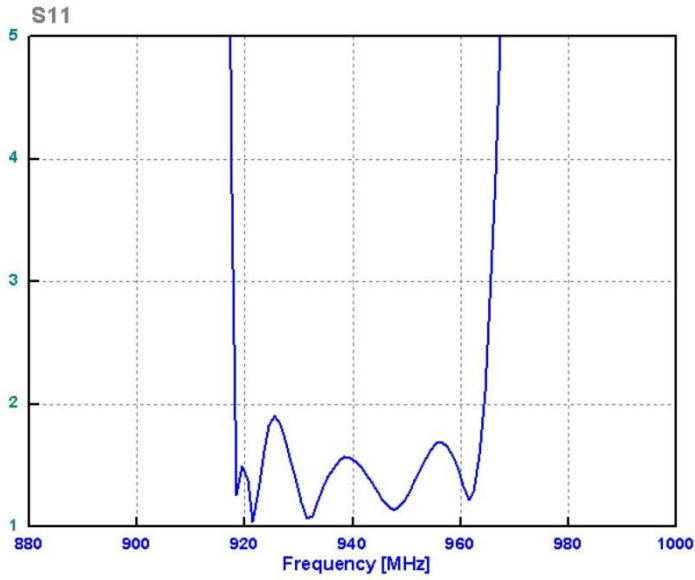


Response Plot:





VSWR



Smith Chart

