



95 MHz IF Saw Filter

Part Number: AM95S679

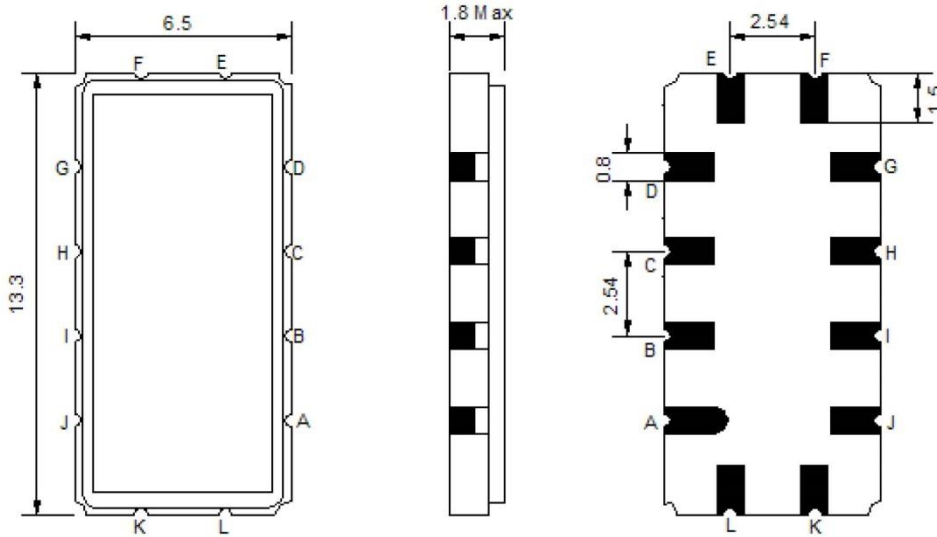


Parameters Description	Unit	Minimum	Typical	Maximum
Center Frequency (Fo)	MHz	-	95.0	-
Insertion Loss at Fo	dB	-	14.80	16.00
Passband Ripple within Fo ± 9.50 MHz	dB	-	0.50	0.90
Group Delay Variation within Fo ± 9.50 MHz	nsec	-	75	120
Absolute Delay at Fo	usec	-	1.14	-
Bandwidth at -1.0 dB	MHz	-	19.42	-
Bandwidth at -3.0 dB	MHz	19.90	20.15	-
Bandwidth at -40.0 dB	MHz	-	23.25	23.60
Ultimate Rejection	dB	40	45	-
Temperature Coefficient	ppm/°C	-	-86	-

Parameters Description	Unit	Minimum	Typical	Maximum
Operation Temperature Range	°C	-	+25	-
Storage Temperature Range	°C	-40	-	+85
Maximum DC Voltage	V	-	-	10
Maximum Input Power	dBm	-	-	10
Source Impedance (Single Ended) ₁	Ω	-	50	-
Load Impedance (Single Ended) ₁	Ω	-	50	-
Package Size and Type	13.3 x 6.5 x 1.8 mm			V

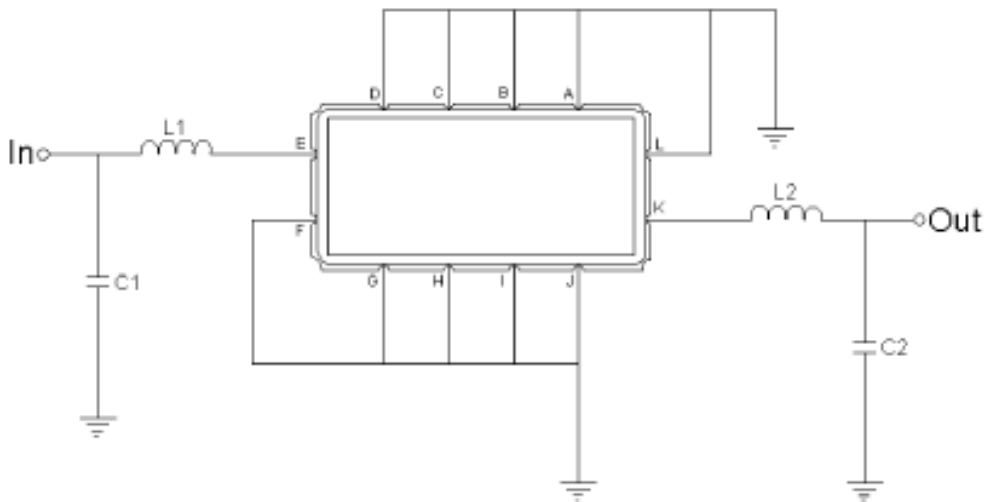


Outline Drawing:



Pin Description	
Ground	A B C D F G H I J L
Input	E
Output	K

Testing Environment:



Pin Description	
Ground	L1 = 150 nH C1 = 20 p
Input	L2 = 120 nH C2 = 33 p
Source/Load Impedance	50 Ω



ANATECH ELECTRONICS INC
RF & Microwave Filters & Products

95 MHz IF Saw Filter

Part Number: AM95S679



Frequency Response:

Band width at -1.0 dB



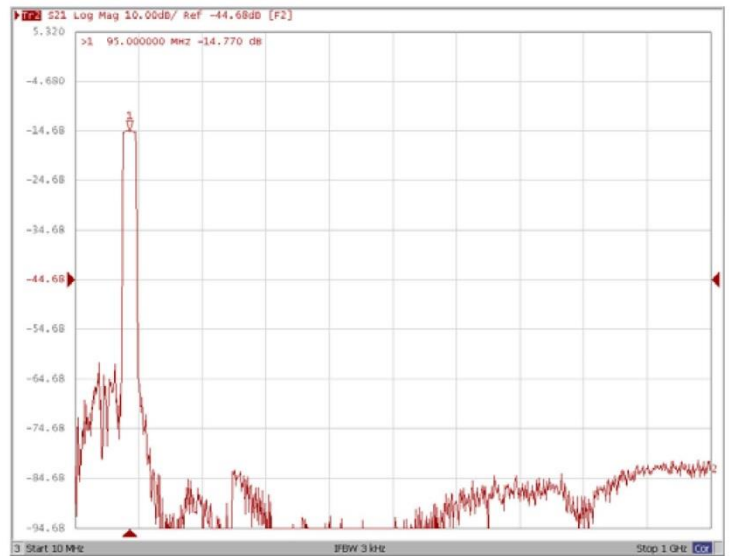
Band width at -3.0 dB



Band width at -40.0 dB



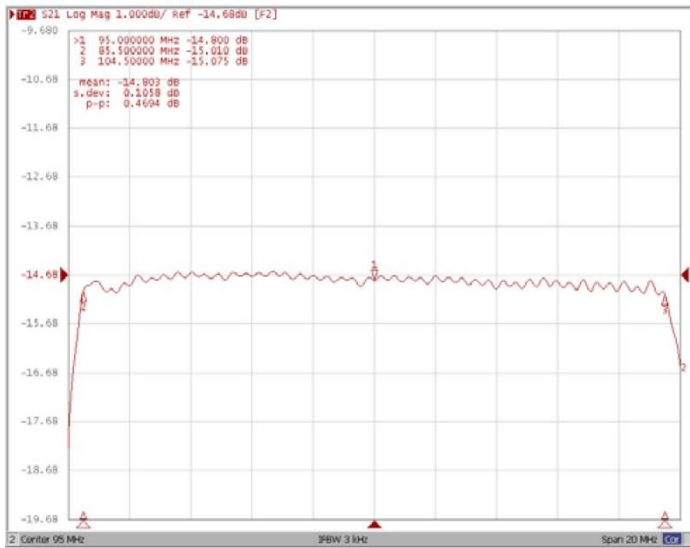
Wide-Band



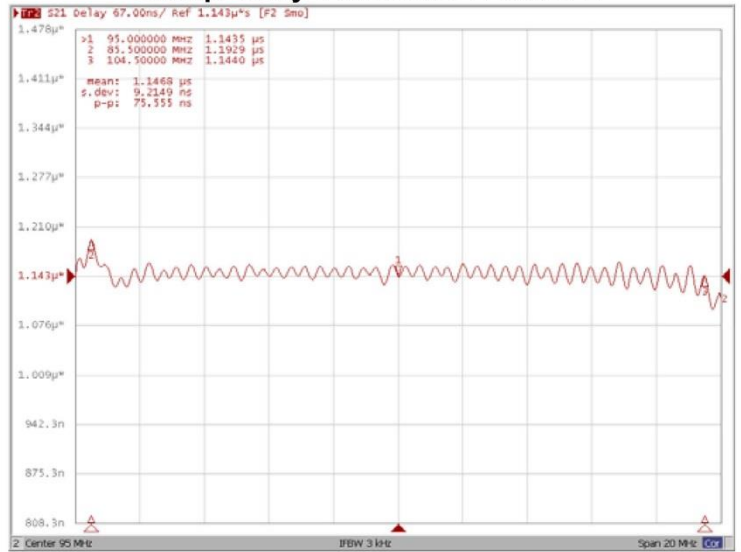


Frequency Response:

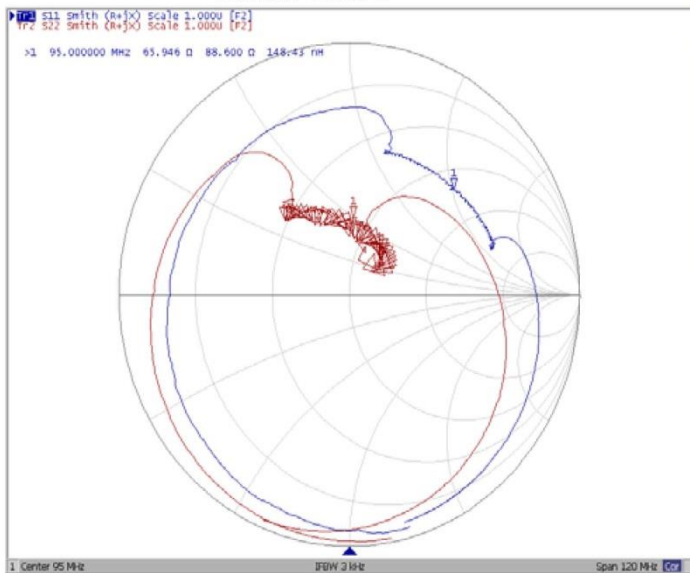
Ripple Variation Fo±9.5MHz



Group Delay Variation Fo±9.5MHz



Smith Chart



SWR

